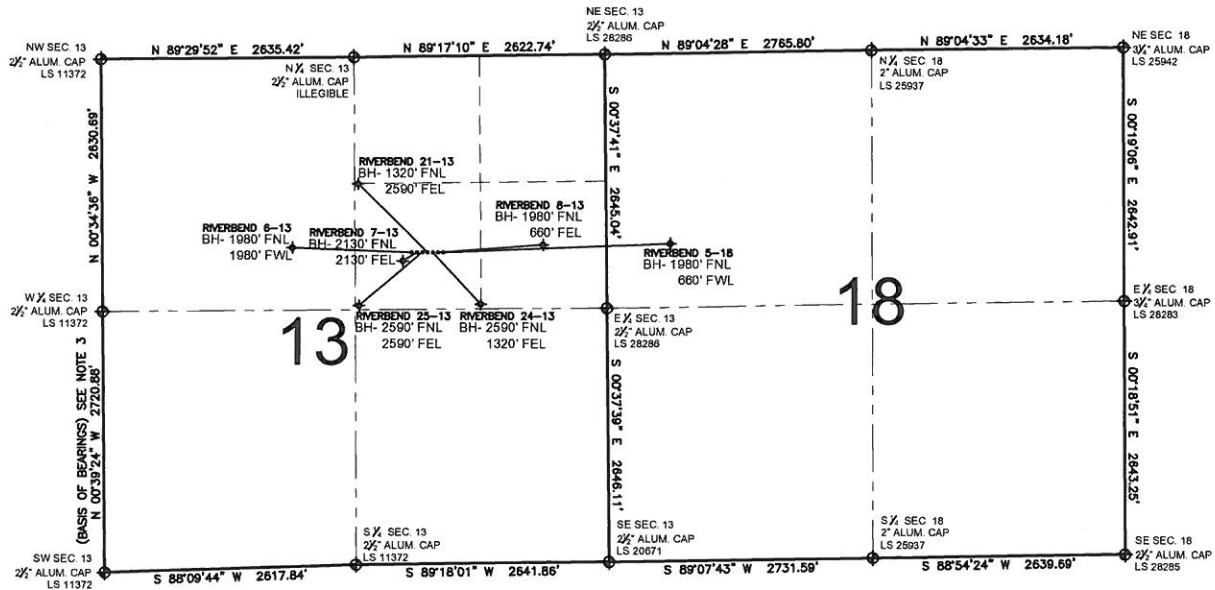


PAD DRAWING - RIVERBEND 7 PAD

SECTION 13, TOWNSHIP 1 NORTH, RANGE 67 WEST, 6TH P.M.



LEGEND

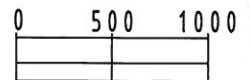
- = EXISTING MONUMENT
 = BOTTOM HOLE
 BH= BOTTOM HOLE
 = PROPOSED WELL
 = EXISTING WELL

NOTES:

- THIS SURVEY WAS DONE BY GPS METHODS AND CONFORMS TO THE MINIMUM STANDARDS SET BY THE C.O.G.C.C., RULE NO. 215
- ELEVATIONS SHOWN AT THE WELL HEAD, AS WELL AS HORIZONTAL CONTROL, ARE BASED ON GPS-RTK VALUES DERIVED FROM DOING 2-HOUR STATIC GPS SESSIONS AND REDUCTIONS USING O.P.U.S. SOLUTIONS.
VERTICAL = NAVD88; HORIZONTAL = NAD83/92
- THE BEARINGS SHOWN HEREON ARE BASED ON GPS OBSERVATIONS BETWEEN THE MONUMENTS SHOWN HEREON AS FOUND ON THE FIELD DATE BELOW.
- DISTANCES SHOWN ARE AT GROUND LEVEL, AS MEASURED IN THE FIELD, WITH TIES TO WELLS MEASURED AT A PERPENDICULAR TO SECTION LINES.

NOTES:

- RIVERBEND 5-18 TO BE AT 2045' FNL, 1707' FEL.
 BOTTOM HOLE AT 1980' FNL & 660' FWL.
 RIVERBEND 8-13 TO BE AT 2045' FNL, 1723' FEL.
 BOTTOM HOLE AT 1980' FNL & 660' FWL.
 RIVERBEND 24-13 TO BE AT 2045' FNL, 1739' FEL.
 BOTTOM HOLE AT 2590' FNL & 1320' FEL.
 RIVERBEND 21-13 TO BE AT 2045' FNL, 1755' FEL.
 BOTTOM HOLE AT 1320' FNL & 2590' FEL.
 RIVERBEND 25-13 TO BE AT 2045' FNL, 1771' FEL.
 BOTTOM HOLE AT 2590' FNL & 2590' FEL.
 RIVERBEND 6-13 TO BE AT 2045' FNL, 1803' FEL.
 BOTTOM HOLE AT 1980' FNL & 1980' FWL.
 RIVERBEND 7-13 TO BE AT 2045' FNL, 1787' FEL.
 BOTTOM HOLE AT 2130' FNL & 2130' FEL.



SCALE: 1"=1000'

REVISIONS

INITIAL	DATE

PREPARED BY:



KERR-MCGEE OIL & GAS ONSHORE LP

FIELD DATE:
04-27-10

DRAWING DATE:
05-03-10

BY:
SMF

PAD NAME:
RIVERBEND 7 PAD

SURFACE LOCATION:

WELD COUNTY, COLORADO
SW 1/4 NE 1/4, SEC. 13, T1N, R67W