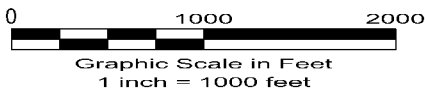
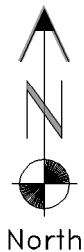
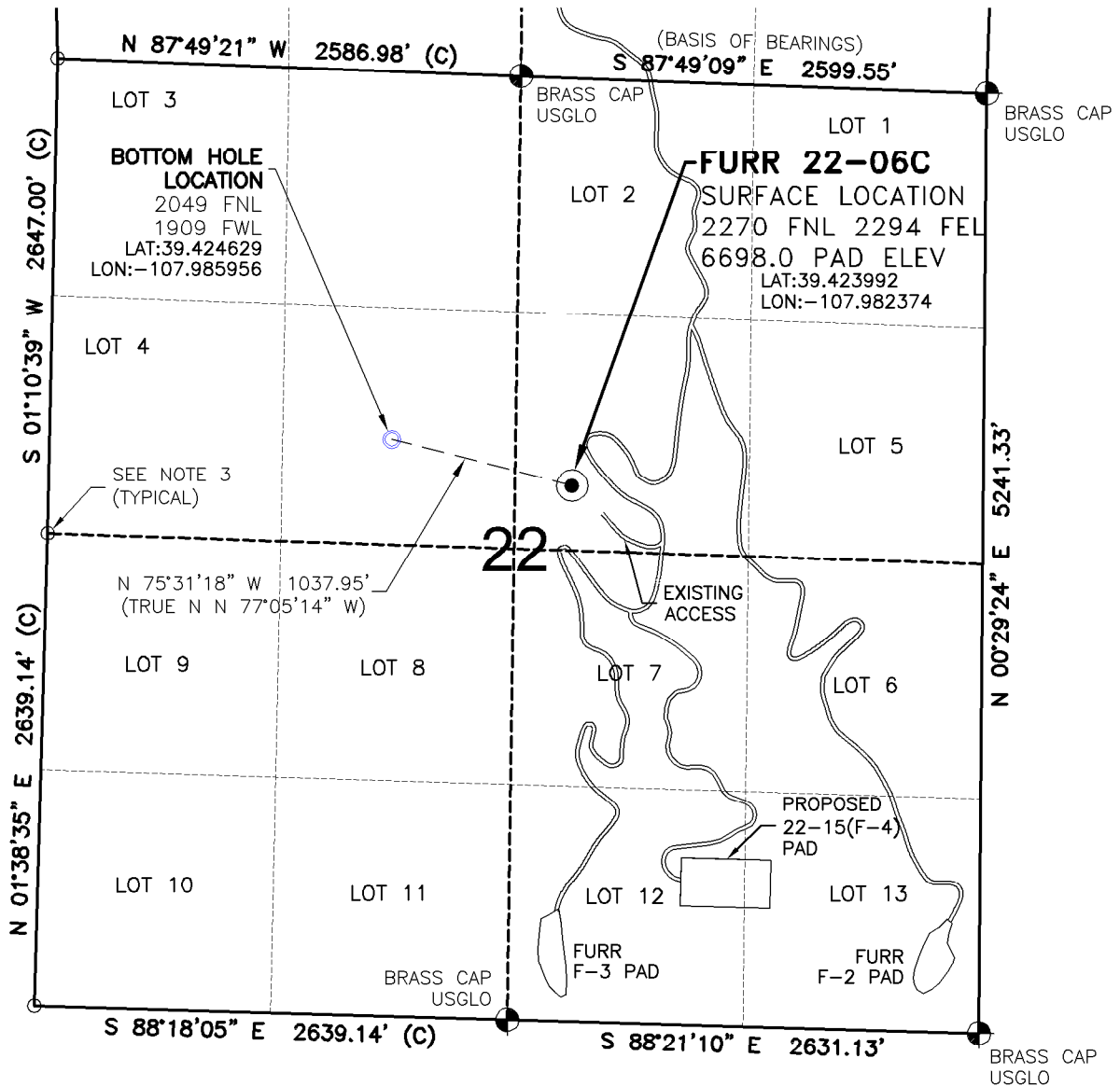


# WELL LOCATION MAP

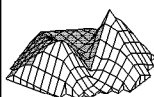
FURR 22-07 (F-1) PAD



The undersigned hereby states that the well location shown hereon was staked on the ground based on existing monumentation and/or physical evidence found in the field and is correct to the best of my knowledge, information and belief.

## NOTES

- 1.) Horizontal and vertical datum, based on NGS control point "FABER" with an elevation of 5186. NAVD 1988.
- 2.) All directions, distances, and dimensions shown hereon are based on coordinates from the "Colorado coordinate system of 1983 central zone" (article 52 of title 38, C.R.S.).
- 3.) All section line dimensions shown hereon are based on field measurements of existing monuments and/or physical evidence found in the field unless otherwise indicated. Refer to land survey plats deposited in Garfield County & BLM Survey.
- 4.) Physical features shown hereon are for graphical representation only.
- 5.) See From 2A for visible improvements within 400' of wellhead.
- 6.) Distances to nearest section lines are measured perpendicularly.
- 7.) This is not a land survey nor land survey plat.
- 8.) Date of Survey 7/21/08; Date of Drawing 2/17/10. REV 3  
PDOP Reading: 2.6 Instrument Operator: MTB



LAND SURVEYING AND MAPPING  
LAFAYETTE - WINTER PARK  
Ph 303 666 0379 Fx 303 665 6320

LARAMIE ENERGY II LLC  
FURR 22-06C

SL SW1/4 NE1/4 SEC. 22 T7S R95W  
BH SE1/4 NW1/4 SEC. 22 T7S R95W  
6th PM GARFIELD COUNTY COLORADO