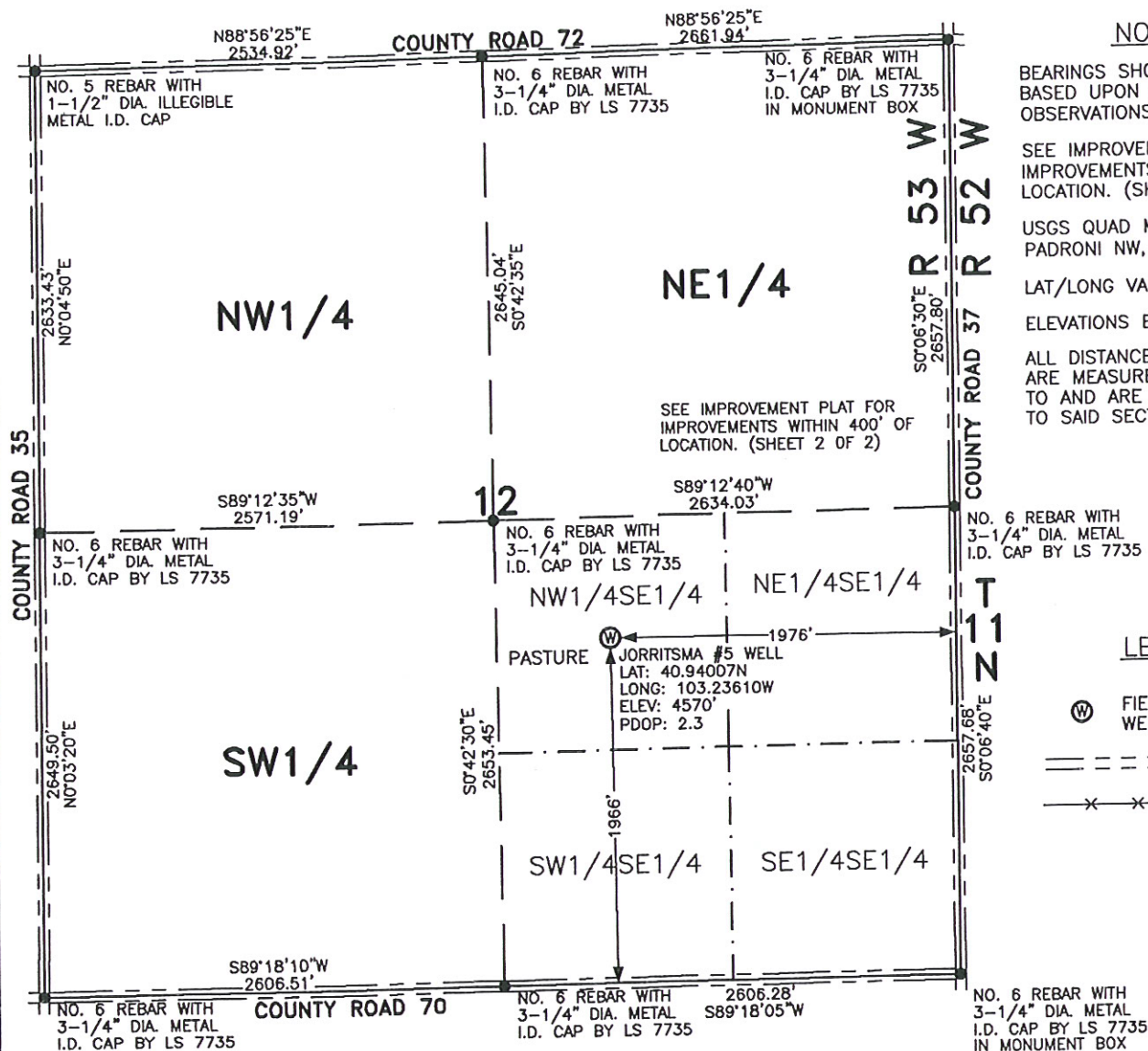


WELL LOCATION FOR  
MERCHANT ENERGY PARTNERS, LLC



NOTES

BEARINGS SHOWN HEREON ARE  
BASED UPON RTK GPS  
OBSERVATIONS.

SEE IMPROVEMENT PLAT FOR  
IMPROVEMENTS WITHIN 400' OF  
LOCATION. (SHEET 2)

USGS QUAD MAP:  
PADRONI NW, COLO.

LAT/LONG VALUES ARE NAD83

ELEVATIONS BASED ON NAVD 1988

ALL DISTANCES TO SECTION LINES  
ARE MEASURED PERPENDICULAR  
TO AND ARE AT RIGHT ANGLES  
TO SAID SECTION LINES.

LEGEND

FIELD SURVEYED  
WELL LOCATION

ROAD

—X—X— FENCE

THIS WELL LOCATION PLAT HAS BEEN PREPARED FOR MERCHANT ENERGY PARTNERS, LLC, TO LOCATE THE JORRITSMA #5 WELL BEING 1976 FEET FROM THE EAST LINE AND 1966 FEET FROM THE SOUTH LINE IN THE NW1/4SE1/4 OF SECTION 12, TOWNSHIP 11 NORTH, RANGE 53 WEST OF THE 6TH P.M., LOGAN COUNTY, COLORADO. THE SURFACE ELEVATION AT THIS POINT IS 4570 FEET. THIS IS NOT A LAND SURVEY PLAT.



SCALE: 1" = 1000'

1000 500 0 1000

SCALE IN FEET

**LEIBERT-McATEE & ASSOCIATES, INC.**

P.O. BOX 442 615 SOUTH TENTH AVENUE  
STERLING, CO 80751 970-522-1960

FIELD DATE: 6-8-10

DWG DATE: 6-14-10

GPS OPERATOR:  
DARREN VEAL

JORRITSMA #

DWG NO. 1526-09

SHEET 1 OF 2