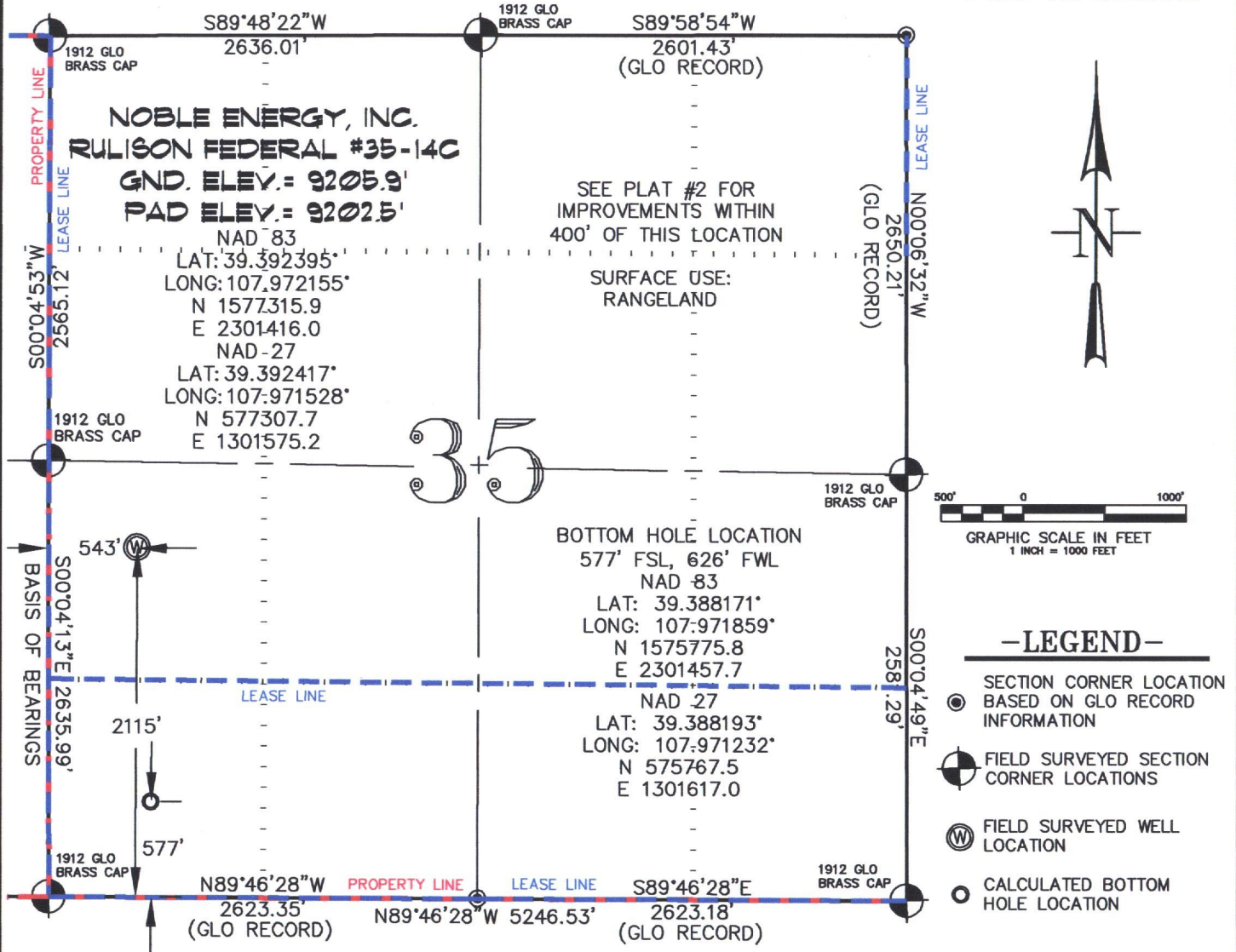


SEC. 35, T. 7 S., R. 95 W. OF THE 6TH P.M.

BM 35L  
PAD LOCATION



THIS WELL LOCATION PLAT WAS PREPARED FOR NOBLE ENERGY INC. TO LOCATE THE RULISON FEDERAL #35-14C WELL, 2115 FEET FROM THE SOUTH LINE AND 543 FEET FROM THE WEST LINE IN THE NW1/4 SW1/4 OF SECTION 35, T. 7 S., R. 95 W. OF THE 6TH P.M. GARFIELD COUNTY, COLORADO.

#### REFERENCE NOTES

- 1) T. 7 S., R. 95 W., 6TH P.M. GLO PLAT.
- 2) U.S.G.S. QUAD: PARACHUTE, CO
- 3) ELEVATIONS BASED ON N.A.V.D. 1988
- 4) LATITUDES AND LONGITUDES ARE BASED ON NAD 83, COLORADO CENTRAL ZONE.
- 5) GPS OPERATOR IVAN MARTIN, OBSERVED A PDOP OF 2.8.
- 6) ALL GPS OBSERVATIONS ARE IN COMPLIANCE WITH COGCC RULE NO. 215.
- 7) SURFACE AND BOTTOM HOLE LOCATIONS ARE MEASURED 90° FROM SECTION LINES.

#### SURVEYOR'S CERTIFICATE

I, George R. Bauer: a Professional Land Surveyor in the State of Colorado do hereby certify that this Survey was made under my direct supervision, and that this Plat represents said Survey.



COLORADO P.L.S. 27925



**CONSTRUCTION SURVEYS, INC.**  
0012 SUNRISE BLVD.  
SILT, CO 81652  
(970)876-5753

VIEW: 1K

|                    |                       |
|--------------------|-----------------------|
| SURVEYED: 10/06/09 | SCALE: 1" = 1000'     |
| DRAFTED: 01/18/10  | DWG: Noble\2006\BM35L |
| CHECKED: 01/19/10  | SHEET: 1 of 10        |