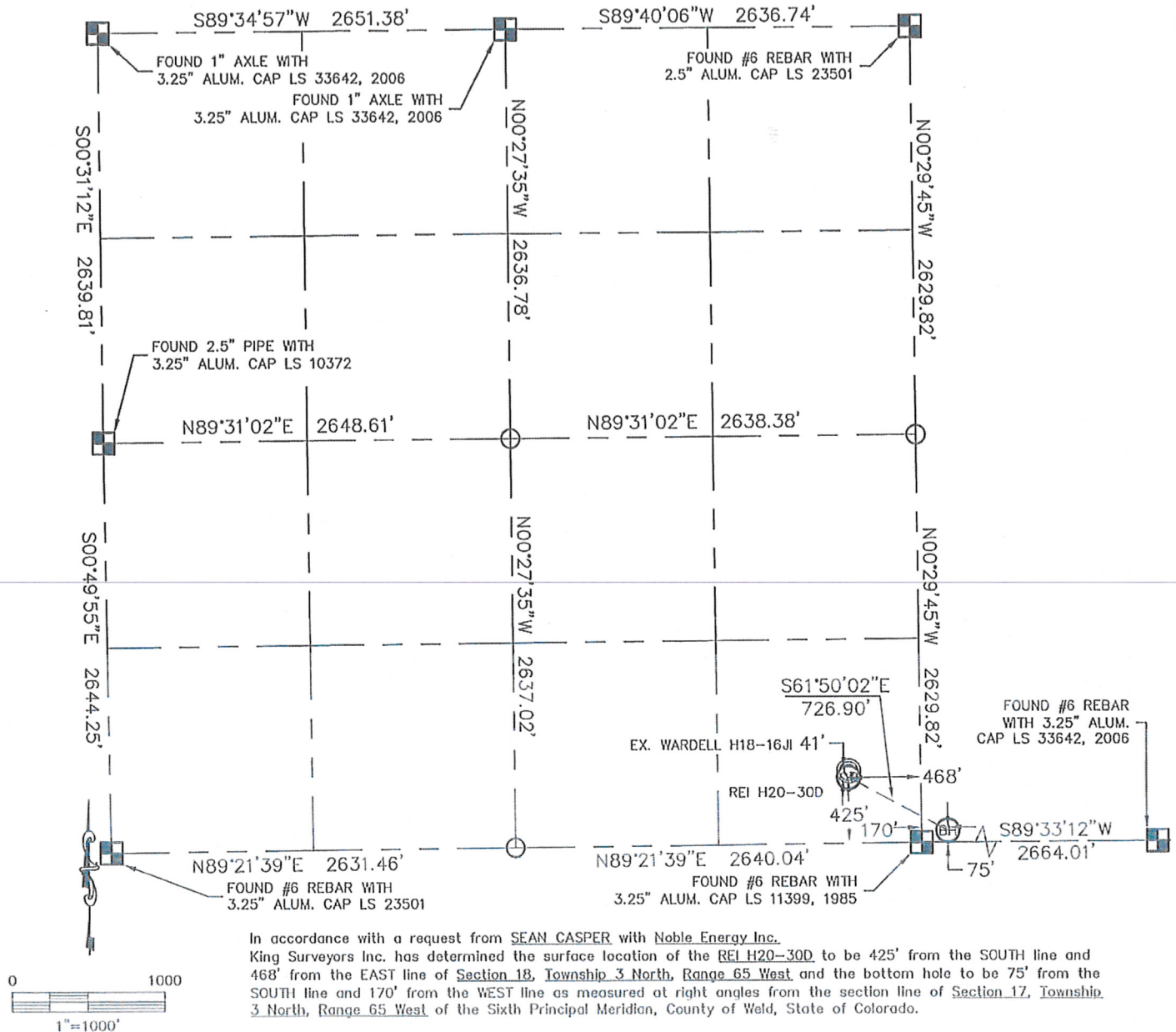


## WELL LOCATION CERTIFICATE

THIS MAP DOES NOT REPRESENT A BOUNDARY SURVEY

SECTION: 18  
TOWNSHIP: 3N  
RANGE: 65WIn accordance with a request from SEAN CASPER with Noble Energy Inc.King Surveyors Inc. has determined the surface location of the REI H20-300 to be 425' from the SOUTH line and 468' from the EAST line of Section 18, Township 3 North, Range 65 West and the bottom hole to be 75' from the SOUTH line and 170' from the WEST line as measured at right angles from the section line of Section 17, Township 3 North, Range 65 West of the Sixth Principal Meridian, County of Weld, State of Colorado.I hereby state that this Well Location Certificate was prepared by me, or under my direct supervision, that the fieldwork was completed on 10-6-09, for and on behalf of Noble Energy Inc. That this is not a Land Survey Plot or an Improvement Survey Plot, and that it is not to be relied upon for establishment of fence, building, or other future improvement lines.

## NOTE:

- 1) Bearings shown are Grid Bearings of the Colorado State Plane Coordinate System, North Zone, North American Datum 1983/2007. The lineal dimensions as contained herein are based upon the "U.S. Survey Foot."
- 2) Ground elevations are based on an observed GPS elevation (NAVD 1988 DATUM).
- 3) NEAREST EXISTING WELL: WARDELL H 18-16J1 41' NORTH
- 4) IMPROVEMENTS: See VISIBLE IMPROVEMENTS exhibit for all visible improvements within 400' of well head.
- 5) SURFACE USE: PASTURE, EX. WELL SITE

## SURFACE LOCATION

LATITUDE: 40.21935°N  
 LONGITUDE: 104.69850°W  
 PDOP: 1.3  
 ELEV: 4924  
 1/4, 1/4: SE1/4SE1/4  
 NEAREST PROPERTY LINE: 425' SOUTH

## BOTTOM HOLE

LATITUDE: 40.21839°N  
 LONGITUDE: 104.69622°W

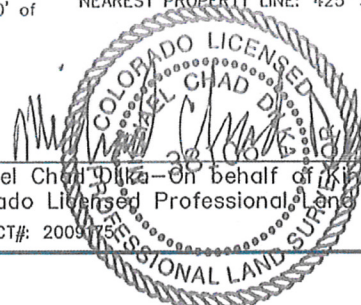
## NOTE

According to Colorado law, you must commence any legal action based upon any defect in this W.L.C. within three years after you discover such defect. In no event, may any action based upon any defect in this survey be commenced more than ten years after the date of the certificate shown hereon. (13-80-105 C.R.S.)

## LEGEND

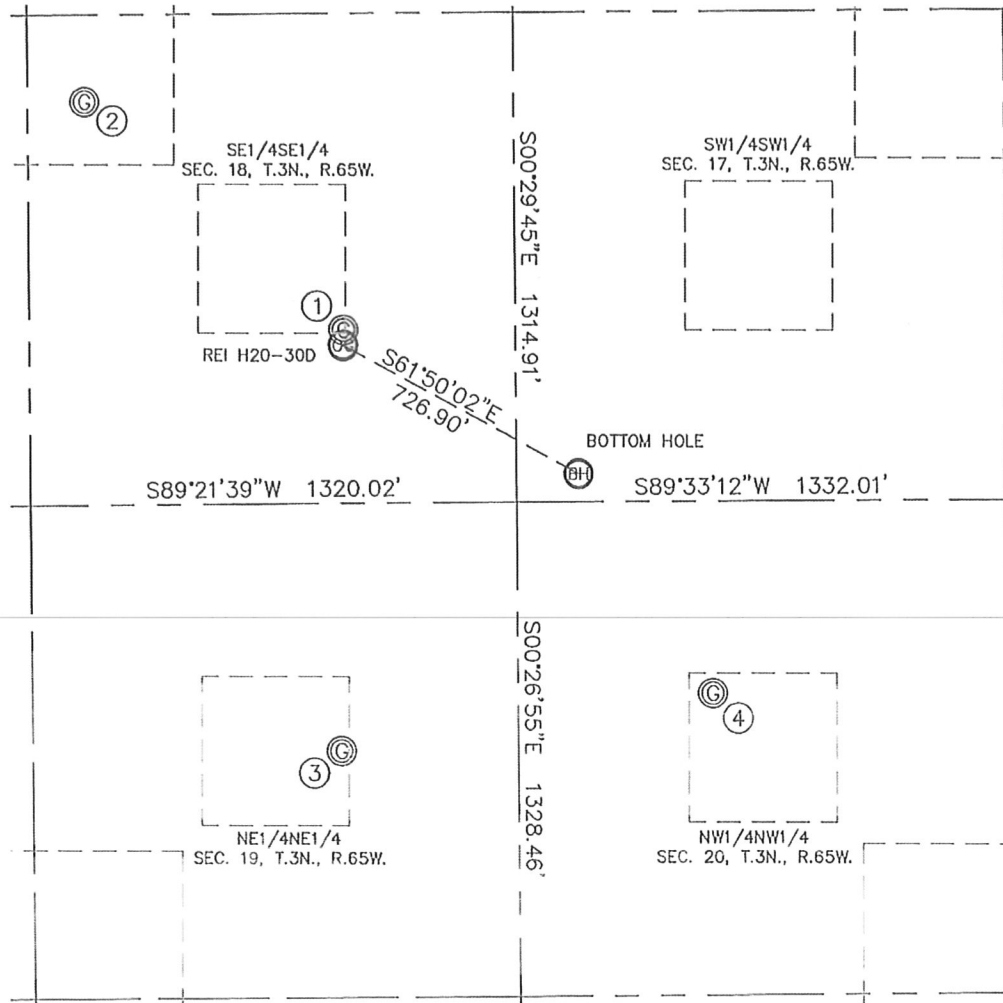
- = ALIQUOT MONUMENT  
 AS DESCRIBED  
 = CALCULATED POSITION

Michael Chad Duka - On behalf of King Surveyors, Inc.  
 Colorado Licensed Professional Land Surveyor No. 38106  
 PROJECT#: 2009175



# SITE SKETCH

SECTION: 18  
TOWNSHIP: 3N  
RANGE: 65W



①  
WARDELL H18-16J  
SE1/4SE1/4  
465' FSL  
467' FEL  
LAT--40.21946°N  
LONG--104.69850°W  
PDOP: 3.3  
ELEV: 4924

②  
WARDELL H18-4J  
SE1/4SE1/4  
1084' FSL  
1166' FEL  
LAT--40.22116°N  
LONG--104.70100°W  
PDOP: 1.4  
ELEV: 4936

③  
WARDELL UPRR 41-19 #6  
NE1/4NE1/4  
665' FNL  
480' FEL  
LAT--40.21636°N  
LONG--104.69855°W  
PDOP: 2.0  
ELEV: 4928

④  
HSR-ROSENTHALER 4-20  
NW1/4NW1/4  
517' FNL  
531' FWL  
LAT--40.21677°N  
LONG--104.69493°W  
PDOP: 1.4  
ELEV: 4916

