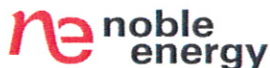


1625 Broadway
Suite 2000
Denver, CO 80202

Tel: 303.228.4000
Fax: 303.228.4280

www.nobleenergyinc.com



July 13, 2010

Colorado Oil and Gas Conservation Commission
The Chancery Building
1120 Lincoln Street, Suite 801
Denver, CO 80203

Attn: Mr. David Neslin, Director

RE: **LDS D08-30**
Codell/Niobrara New Drill
Township 3 North, Range 64 West, 6th P.M.
Section 5: SE/4SW/4: 189' FSL & 1287' FWL (Surface Location)
Section 6: SE/4SE/4: 150' FSL & 150' FEL (Bottom Hole Location)
Weld County, Colorado

Mr. Neslin:

Noble Energy, Inc. ("NEI") is planning to drill the captioned boundary well in accordance with the provisions of COGCC Rule 318A.e.

NEI's proposed wellbore spacing unit consists of the SW/4SW/4 of Section 5, SE/4SE/4 of Section 6, NE/4NE/4 of Section 7 and NW/4NW/4 of Section 8, T3N, R64W, creating a 160-acre wellbore spacing unit. NEI is not the only owner within the proposed wellbore spacing unit and as such provided notice to the remaining owner(s) within said proposed spacing unit as required under COGCC Rule 318A.e(6). Copies of the required notice letter(s) is/are on file at the NEI offices. The required twenty (20) day notice period has elapsed absent the receipt by NEI of an objection to said proposal by the owner(s) within the proposed spacing unit for this well.

Enclosed are copies of the following documents to assist you in your review and approval of NEI's proposed APD for the captioned well:

- Plat illustrating the proposed wellbore spacing unit and number of Codell/Niobrara wells located within the existing 160-acre governmental quarter section (SE/4) to be less than eight (8) in accordance with COGCC Rule 318A.f.
- Plat illustrating proposed wellbore spacing unit on existing location plat.

Thank you for your attention to the enclosed. NEI respectfully requests that the COGCC review the enclosed information and approve the Application for Permit to Drill the captioned well.

Sincerely,

A handwritten signature in blue ink that reads 'Susan Miller'.

Susan Miller
Regulatory Analyst II
Noble Energy Inc.

The map displays the following locations and codes:

- Beckers:** BECKER 5-7, BECKER 5-11, BECKER 5-6, BECKER 5-10, BECKER 5-4, BECKER 5-12, BECKER 5-3, BECKER 5-9, BECKER 5-8, BECKER 5-2, BECKER 5-14, BECKER 5-13, BECKER 5-1, BECKER 5-5, BECKER 6-5, BECKER 6-1.
- McKennys:** MCKENNEY 6-2, MCKENNEY 6-14, MCKENNEY 6-13, MCKENNEY 6-4, MCKENNEY 6-12, MCKENNEY 6-3, MCKENNEY 6-1.
- Faramir Farms:** FARAMIR FARMS 6-22, FARAMIR FARMS 6-21, FARAMIR FARMS 6-3, FARAMIR FARMS 6-4, FARAMIR FARMS 6-12, FARAMIR FARMS 6-13, FARAMIR FARMS 6-14, FARAMIR FARMS 6-15, FARAMIR FARMS 6-16, FARAMIR FARMS 6-17, FARAMIR FARMS 6-18, FARAMIR FARMS 6-19, FARAMIR FARMS 6-20, FARAMIR FARMS 6-21, FARAMIR FARMS 6-22, FARAMIR FARMS 6-23, FARAMIR FARMS 6-24, FARAMIR FARMS 6-25, FARAMIR FARMS 6-26, FARAMIR FARMS 6-27, FARAMIR FARMS 6-28, FARAMIR FARMS 6-29, FARAMIR FARMS 6-30, FARAMIR FARMS 6-31, FARAMIR FARMS 6-32, FARAMIR FARMS 6-33, FARAMIR FARMS 6-34, FARAMIR FARMS 6-35, FARAMIR FARMS 6-36, FARAMIR FARMS 6-37, FARAMIR FARMS 6-38, FARAMIR FARMS 6-39, FARAMIR FARMS 6-40, FARAMIR FARMS 6-41, FARAMIR FARMS 6-42, FARAMIR FARMS 6-43, FARAMIR FARMS 6-44, FARAMIR FARMS 6-45, FARAMIR FARMS 6-46, FARAMIR FARMS 6-47, FARAMIR FARMS 6-48, FARAMIR FARMS 6-49, FARAMIR FARMS 6-50, FARAMIR FARMS 6-51, FARAMIR FARMS 6-52, FARAMIR FARMS 6-53, FARAMIR FARMS 6-54, FARAMIR FARMS 6-55, FARAMIR FARMS 6-56, FARAMIR FARMS 6-57, FARAMIR FARMS 6-58, FARAMIR FARMS 6-59, FARAMIR FARMS 6-60, FARAMIR FARMS 6-61, FARAMIR FARMS 6-62, FARAMIR FARMS 6-63, FARAMIR FARMS 6-64, FARAMIR FARMS 6-65, FARAMIR FARMS 6-66, FARAMIR FARMS 6-67, FARAMIR FARMS 6-68, FARAMIR FARMS 6-69, FARAMIR FARMS 6-70, FARAMIR FARMS 6-71, FARAMIR FARMS 6-72, FARAMIR FARMS 6-73, FARAMIR FARMS 6-74, FARAMIR FARMS 6-75, FARAMIR FARMS 6-76, FARAMIR FARMS 6-77, FARAMIR FARMS 6-78, FARAMIR FARMS 6-79, FARAMIR FARMS 6-80, FARAMIR FARMS 6-81, FARAMIR FARMS 6-82, FARAMIR FARMS 6-83, FARAMIR FARMS 6-84, FARAMIR FARMS 6-85, FARAMIR FARMS 6-86, FARAMIR FARMS 6-87, FARAMIR FARMS 6-88, FARAMIR FARMS 6-89, FARAMIR FARMS 6-90, FARAMIR FARMS 6-91, FARAMIR FARMS 6-92, FARAMIR FARMS 6-93, FARAMIR FARMS 6-94, FARAMIR FARMS 6-95, FARAMIR FARMS 6-96, FARAMIR FARMS 6-97, FARAMIR FARMS 6-98, FARAMIR FARMS 6-99, FARAMIR FARMS 6-100.



 Proposed 160 acre Spacing Unit

 Bottom Hole Located SESE, Sec 6, T3N, R64W

The governmental $\frac{1}{4}$ Section has less than 8 bottom hole wells producing from the Codell and Niobrara formations.

PROPOSED SPACING UNIT - NOBLE ENERGY

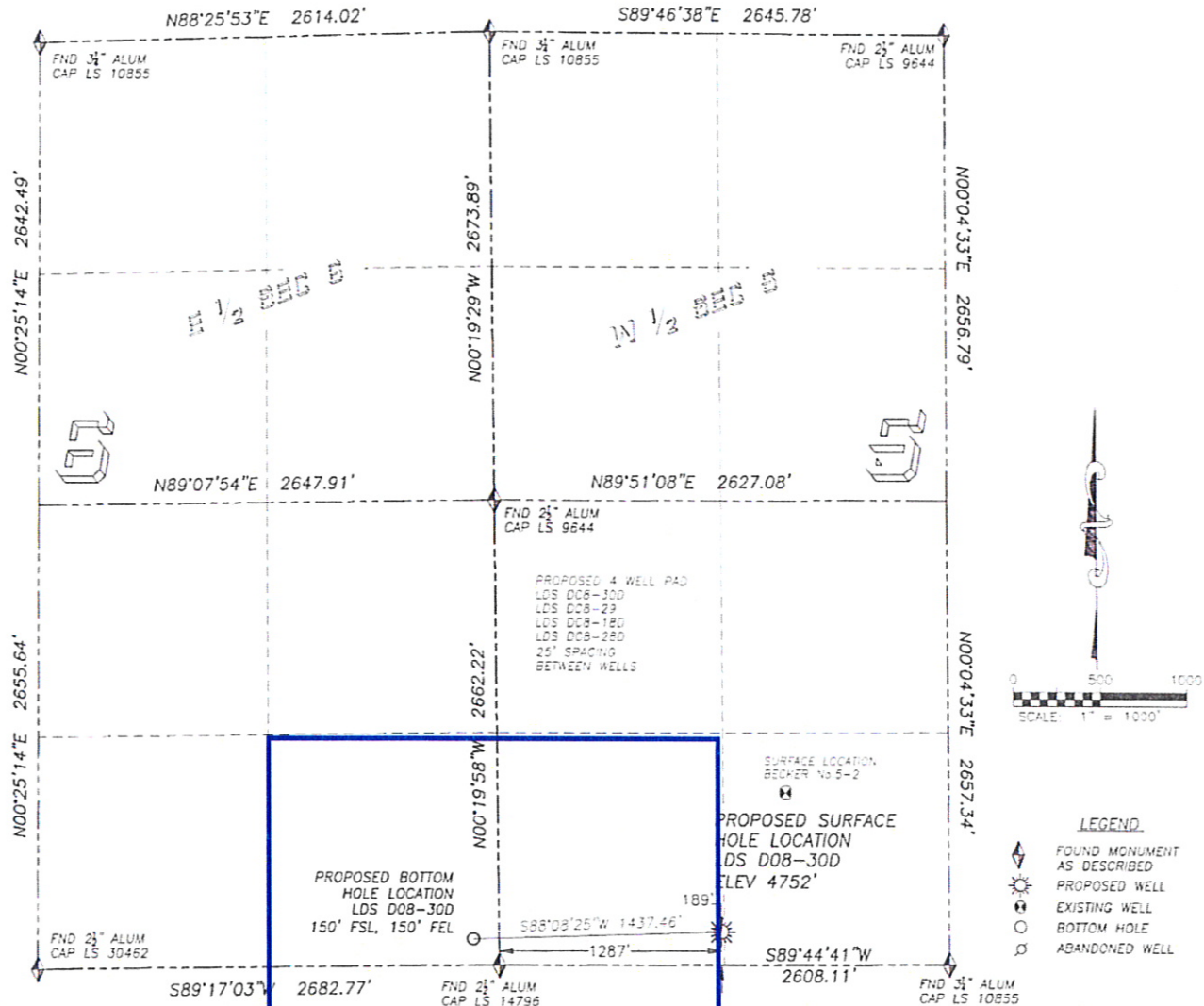
DALEY LAND SURVEYING, INC.

PARKER, CO. 80134

303 953 9841

WELL LOCATION CERTIFICATE LDS D08-30D

SECTION 5, TOWNSHIP 3 NORTH, RANGE 64 WEST OF THE 6TH PRINCIPAL MERIDIAN



NAD 83 LATITUDE AND LONGITUDE

LDS D08-30D SURFACE HOLE

LATITUDE: N40.24768°
LONGITUDE: W104.57953°
ELEVATION: 4752'
PDOP: 1.7

189' FSL, 1287' FWL

BOTTOM HOLE:

LATITUDE: N40.24755°
LONGITUDE: W104.58467°
150' FSL, 150' FEL, SEC 6

NEAREST EXISTING WELL:

BECKER No.5-2 SURFACE HOLE

LATITUDE: N40.24988°
LONGITUDE: W104.57816°
ELEVATION: 4753'
885' NORTHEAST

QUARTER/QUARTER: SW4/SW4

NEAREST APPARENT PROPERTY LINE:
189'± SOUTH

IN ACCORDANCE WITH A REQUEST FROM MATT CAMPBELL OF NOBLE ENERGY INC., DALEY LAND SURVEYING, INC. HAS DETERMINED THE SURFACE LOCATION OF THE LDS D08-30D WELL TO BE 189' FSL, 1287' FWL, AS MEASURED AT NINETY (90) DEGREES FROM THE SECTION LINES OF SECTION 5, TOWNSHIP 3 NORTH, RANGE 64 WEST OF THE 6TH PRINCIPAL MERIDIAN, WELD COUNTY, COLORADO. THE BOTTOM HOLE LOCATION, PROVIDED BY THE CLIENT, IS TO BE 150' FSL, 150' FEL, SEC 6.

I HEREBY CERTIFY THAT THIS WELL LOCATION CERTIFICATE WAS PREPARED BY ME OR UNDER MY DIRECT SUPERVISION, THAT THE WORK WAS COMPLETED ON 4/9/2010 FOR AND ON BEHALF OF NOBLE ENERGY, INC., AND THAT THIS MAP DOES NOT REPRESENT A BOUNDARY SURVEY, IT IS NOT A LAND SURVEY PLAT OR AN IMPROVEMENT SURVEY PLAT AND IT IS NOT TO BE RELIED UPON FOR THE ESTABLISHMENT OF FENCE, BUILDING OR OTHER FUTURE IMPROVEMENT LINES.

NOTES:

- 1) BEARINGS FOR THIS MAP ARE ASSUMED AND BASED UPON GPS OBSERVATIONS MADE BETWEEN MONUMENTS LOCATED AT THE SOUTHWEST AND SOUTH QUARTER CORNER OF SECTION 5, T.3N., R.64W.
- 2) HORIZONTAL DATUM IS NAD83.
- 3) VERTICAL DATUM IS NAVD83. ELEVATIONS ARE DERIVED FROM GPS OBSERVATIONS PROCESSED THROUGH OPUS, UTILIZING THE GEOID03 MODEL.
- 4) SEE VISIBLE IMPROVEMENTS EXHIBIT FOR VISIBLE IMPROVEMENTS WITHIN 600' OF PROPOSED SURFACE HOLE LOCATION.
- 5) SURFACE USE: OPEN RANGE.

NOTICE: According to Colorado law you MUST commence any legal action based upon any defect in this WLC within three years after you first discover such defect. In no event may any action be commenced more than ten years from the date of the certification shown herein.

FOR AND ON BEHALF OF
DALEY LAND SURVEYING, INC.
Robert Daley, PLS 35597

- LEGEND**
- FOUND MONUMENT AS DESCRIBED
 - PROPOSED WELL
 - EXISTING WELL
 - BOTTOM HOLE
 - ABANDONED WELL

SCALE 1" = 1000'