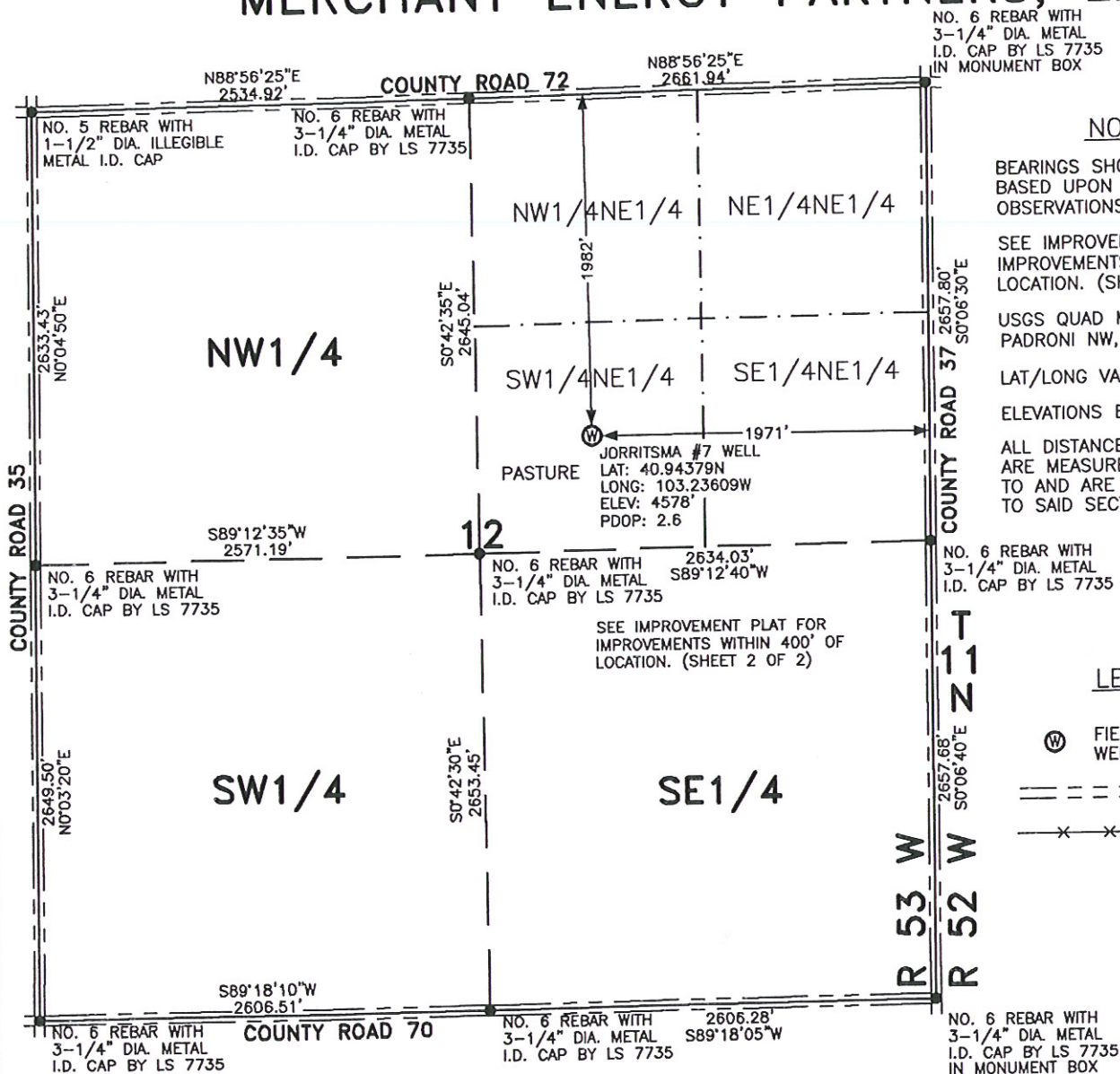


WELL LOCATION FOR MERCHANT ENERGY PARTNERS, LLC



NOTES

BEARINGS SHOWN HEREON ARE
BASED UPON RTK GPS
OBSERVATIONS.

SEE IMPROVEMENT PLAT FOR
IMPROVEMENTS WITHIN 400' OF
LOCATION. (SHEET 2)

USGS QUAD MAP:
PADRONI NW, COLO.

LAT/LONG VALUES ARE NAD83

ELEVATIONS BASED ON NAVD 1988

ALL DISTANCES TO SECTION LINES
ARE MEASURED PERPENDICULAR
TO AND ARE AT RIGHT ANGLES
TO SAID SECTION LINES.

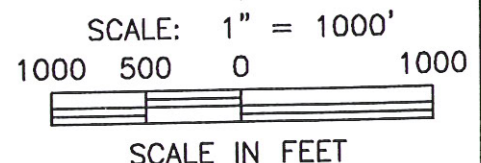
LEGEND

⊙ FIELD SURVEYED
WELL LOCATION

== == == ROAD

-x-x- FENCE

THIS WELL LOCATION PLAT HAS BEEN PREPARED FOR MERCHANT ENERGY PARTNERS, LLC,
TO LOCATE THE JORRITSMA #7 WELL BEING 1971 FEET FROM THE EAST LINE AND
1982 FEET FROM THE NORTH LINE IN THE SW1/4NE1/4 OF SECTION 12,
TOWNSHIP 11 NORTH, RANGE 53 WEST OF THE 6TH P.M., LOGAN COUNTY, COLORADO.
THE SURFACE ELEVATION AT THIS POINT IS 4578 FEET.
THIS IS NOT A LAND SURVEY PLAT.



LEIBERT-McATEE & ASSOCIATES, INC.		
P.O. BOX 442	615 SOUTH TENTH AVENUE	
STERLING, CO 80751	970-522-1960	
FIELD DATE: 6-28-10	DWG DATE: 6-30-10	GPS OPERATOR: DARREN VEAL
JORRITSMA #7	DWG NO. 1529-09	SHEET 1 OF 2