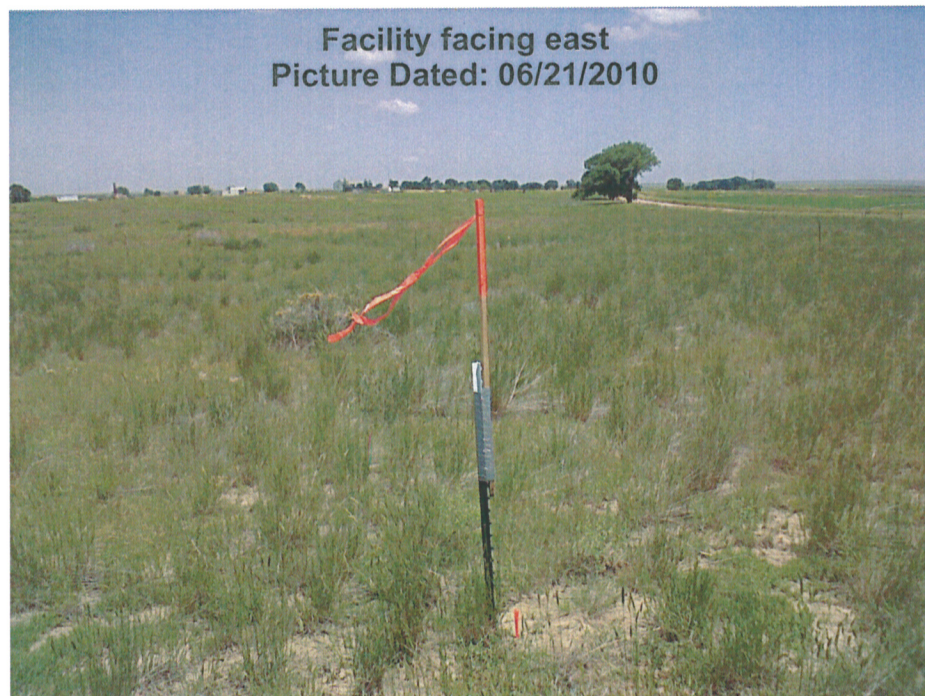


IRVINE PC AB22-10 BATTERY
Township 7 North, Range 64 West
Section 22: SW/4SE/4
Weld County, Colorado



IRVINE PC AB22-10 BATTERY
Township 7 North, Range 64 West
Section 22: SW/4SE/4
Weld County, Colorado



IRVINE PC AB22-10 BATTERY
Township 7 North, Range 64 West
Section 22: SW/4SE/4
Weld County, Colorado

Reference area facing north
Picture Dated: 06/21/2010

