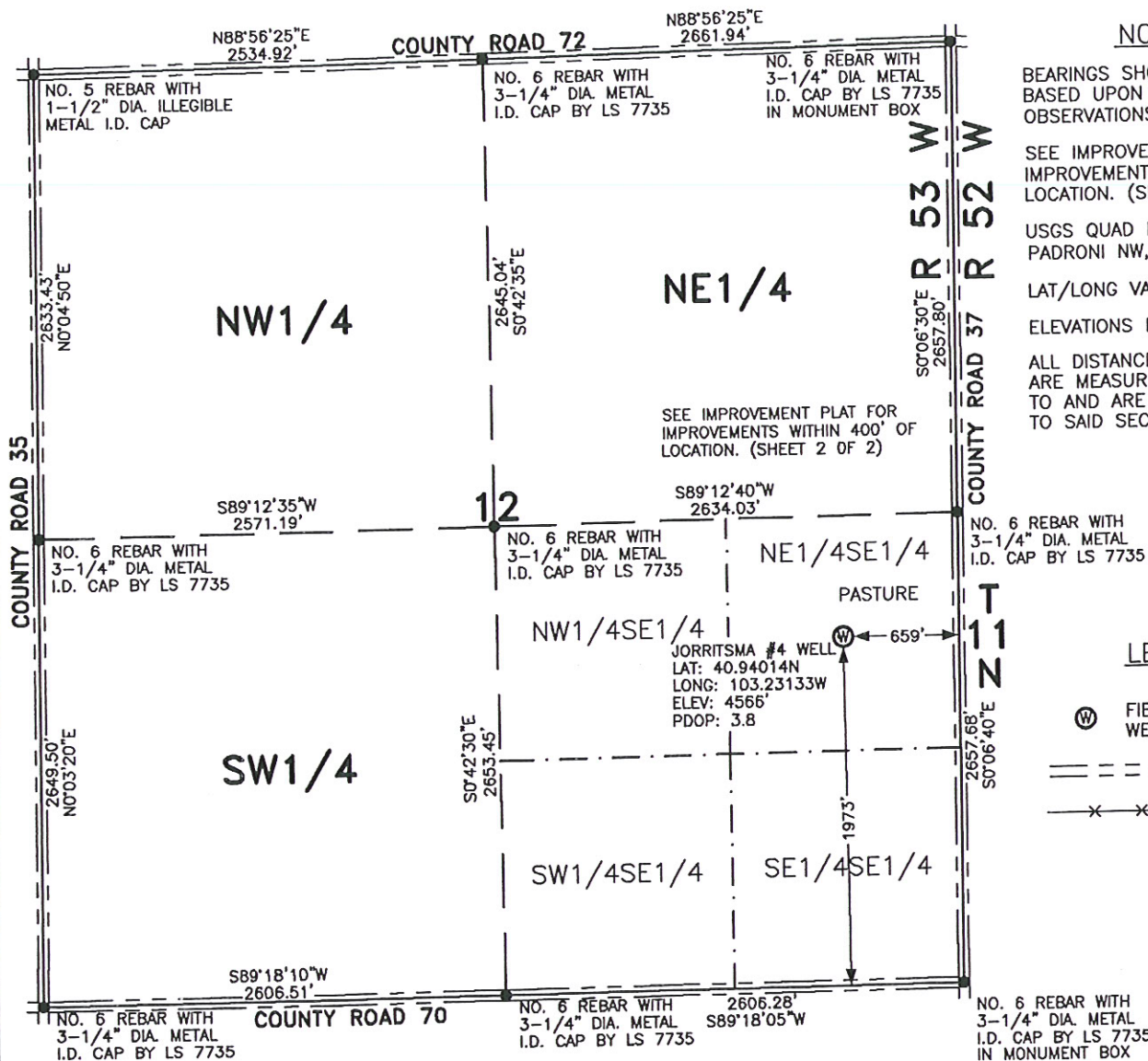


WELL LOCATION FOR  
MERCHANT ENERGY PARTNERS, LLC



## NOTES

BEARINGS SHOWN HEREON ARE  
BASED UPON RTK GPS  
OBSERVATIONS.

SEE IMPROVEMENT PLAT FOR  
IMPROVEMENTS WITHIN 400' OF  
LOCATION. (SHEET 2)

USGS QUAD MAP:  
PADRONI NW, COLO.

LAT/LONG VALUES ARE NAD83

ELEVATIONS BASED ON NAVD 1988

ALL DISTANCES TO SECTION LINES  
ARE MEASURED PERPENDICULAR  
TO AND ARE AT RIGHT ANGLES  
TO SAID SECTION LINES.

### LEGEND

① FIELD SURVEYED  
WELL LOCATION

ROAD

FENCE

THIS WELL LOCATION PLAT HAS BEEN PREPARED FOR MERCHANT ENERGY PARTNERS, LLC, TO LOCATE THE JORRITSMA #4 WELL BEING 659 FEET FROM THE EAST LINE AND 1973 FEET FROM THE SOUTH LINE IN THE NE1/4SE1/4 OF SECTION 12, TOWNSHIP 11 NORTH, RANGE 53 WEST OF THE 6TH P.M., LOGAN COUNTY, COLORADO. THE SURFACE ELEVATION AT THIS POINT IS 4566 FEET. THIS IS NOT A LAND SURVEY PLAT.



SCALE: 1" = 1000'

1000	500	0	1000
------	-----	---	------

SCALE IN FEET

**LEIBERT-McATEE & ASSOCIATES, INC.**

P.O. BOX 442 615 SOUTH TENTH AVENUE  
STERLING, CO 80751 970-522-1960

FIELD DATE: 6-8-10

DWG DATE: 6-14-10

GPS OPERATOR:  
DARREN VEAL

JORRITSMA #4

DWG NO. 1525-09

SHEET 1 OF 2