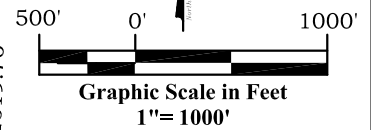
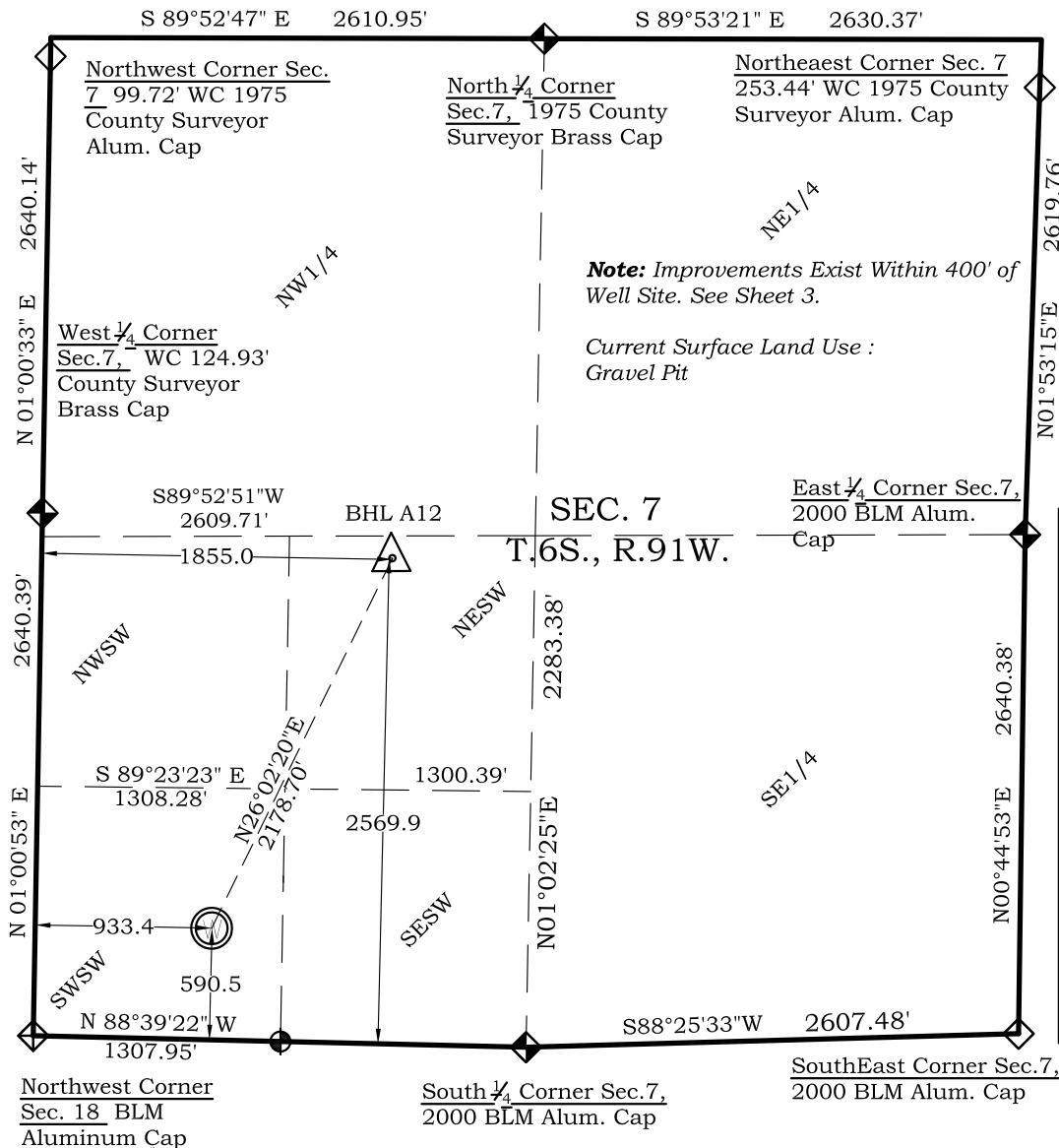


Well Location Plat Frei A12

Section 7, Township 6 South, Range 91 West



Legend

- Field Surveyed Section Corner
- Field Surveyed Quarter Corner
- Calculated Section Corner Location
- Field Surveyed 1/16 Corner

Surface: Frei A12

590' FSL
933' FWL
Gnd El= 5610.0
Pad El= 5596.0
NAD83
Lat: 39.536116217°N
Long: 107.603214212°W
NAD27
Lat: 39.536135600°N
Long: 107.602601206°W
UTM 13 NORTH
NAD 1983
NORTHING
14368439.714
EASTING
906426.457

Bottom Hole: Frei A12

2570' FSL
1855' FWL
NAD83
Lat: 39.541562823°N
Long: 107.600025958°W
NAD27
Lat: 39.541582201°N
Long: 107.599413000°W

Prepared For Antero Resources

Proposed Frei A12 Well Situate in The SW 1/4 SW 1/4 Section 7,
Township 6 South, Range 91 West of the 6 th. Principal
Meridian, County of Garfield, State of Colorado

SURVEYOR'S CERTIFICATE

I, SCOTT E. AIBNER, A REGISTERED LAND SURVEYOR, LICENSED UNDER THE LAWS OF THE STATE OF COLORADO DO HEREBY CERTIFY THAT THE SURVEY SHOWN HEREON WAS PREPARED BY RIVER VALLEY SURVEY, INC., FOR ANTERO RESOURCES, BY ME OR UNDER MY DIRECT SUPERVISION AND THAT THIS PLAT IS A TRUE REPRESENTATION THEREOF.

31143
SCOTT E. AIBNER, COLORADO REG. NO. 31143

BY:
SCOTT E. AIBNER, COLORADO REG. NO. 31143

Notes:

- LATITUDE AND LONGITUDE COORDINATES ARE DIFFERENTIALLY CORRECTED AND BASED ON PUBLISHED NGS CONTROL STATION "WDP-5". SYSTEM: UTM ZONE: 13 NORTH DATUM: NAD 1983 (CONUS)
- ELEVATIONS ARE BASED ON NAVD OF 1983.
- ALL BOTTOM AND TOP HOLE LOCATIONS ARE MEASURED 90 DEGREES FROM SECTION LINE.
- USGS QUADRANGLE MAP "SILT".
- CURRENT SURFACE LAND USE: GRAVEL PIT.
- PDOP AT THE TIME OF LOCATION OF SURFACE WELL = 2.4



River Valley Survey, Inc.
110 East 3rd. Street, Suite 213
Rifle, Colorado 81650
Ph: 970-379-7846

Project: FREI A PAD

Field Date: 05-10-10

Date: 07-01-2010

Scale: 1"= 1000'

Sheet: 1 of 8

Well Location Plat
Prepared For Antero Resources

Situate In:
SW 1/4 Section 7, T6S., R. 91 W. of the
6th P.M., Garfield County, Colorado

