

DALEY LAND SURVEYING, INC.

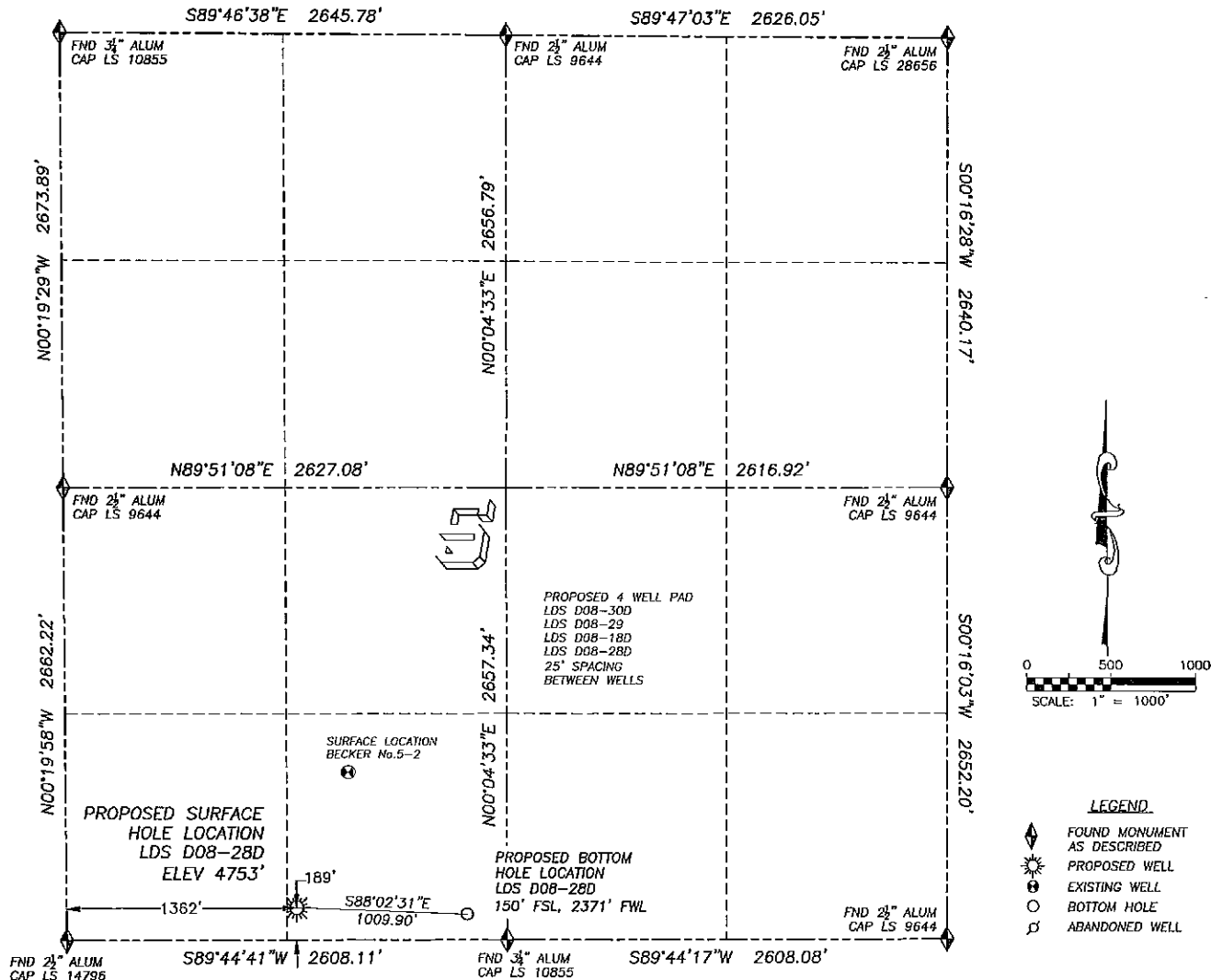
PARKER, CO. 80134

303 953 9841

# WELL LOCATION CERTIFICATE

## LDS D08-28D

SECTION 5, TOWNSHIP 3 NORTH, RANGE 64 WEST OF THE 6TH PRINCIPAL MERIDIAN



### LEGEND

- ◆ FOUND MONUMENT AS DESCRIBED
- ☀ PROPOSED WELL
- EXISTING HOLE
- BOTTOM HOLE
- ◇ ABANDONED WELL

### NAD 83 LATITUDE AND LONGITUDE

#### LDS D08-28D SURFACE HOLE:

LATITUDE: N40.24768°  
 LONGITUDE: W104.57926°  
 ELEVATION: 4753'  
 PDOP 1.6

189' FSL, 1362' FWL

#### BOTTOM HOLE:

LATITUDE: N40.24759°  
 LONGITUDE: W104.57564°  
 150' FSL, 2371' FWL

#### NEAREST EXISTING WELL:

BECKER No.5-2 SURFACE HOLE  
 LATITUDE: N40.24988°  
 LONGITUDE: W104.57816°  
 ELEVATION: 4753'  
 855' NORTHEAST

QUARTER/QUARTER: SE4/SW4

NEAREST APPARENT PROPERTY LINE:  
 189'± SOUTH

IN ACCORDANCE WITH A REQUEST FROM MATT CAMPBELL OF NOBLE ENERGY INC., DALEY LAND SURVEYING, INC. HAS DETERMINED THE SURFACE LOCATION OF THE LDS D08-28D WELL TO BE 189' FSL, 1362' FWL, AS MEASURED AT NINETY (90) DEGREES FROM THE SECTION LINES OF SECTION 5, TOWNSHIP 3 NORTH, RANGE 64 WEST OF THE 6TH PRINCIPAL MERIDIAN, WELD COUNTY, COLORADO.

THE BOTTOM HOLE LOCATION, PROVIDED BY THE CLIENT, IS TO BE 150' FSL, 2371' FWL.

I HEREBY CERTIFY THAT THIS WELL LOCATION CERTIFICATE WAS PREPARED BY ME OR UNDER MY DIRECT SUPERVISION, THAT THE WORK WAS COMPLETED ON 4/9/2010 FOR AND ON BEHALF OF NOBLE ENERGY, INC., AND THAT THIS MAP DOES NOT REPRESENT A BOUNDARY SURVEY, IT IS NOT A LAND SURVEY PLAT OR AN IMPROVEMENT SURVEY PLAT AND IT IS NOT TO BE RELIED UPON FOR THE ESTABLISHMENT OF FENCE, BUILDING OR OTHER FUTURE IMPROVEMENT LINES.

#### NOTES:

- 1) BEARINGS FOR THIS MAP ARE ASSUMED AND BASED UPON GPS OBSERVATIONS MADE BETWEEN MONUMENTS LOCATED AT THE SOUTHWEST AND SOUTH QUARTER CORNER OF SECTION 5, T.3N., R.64W.
- 2) HORIZONTAL DATUM IS NAD83.
- 3) VERTICAL DATUM IS NAVD88. ELEVATIONS ARE DERIVED FROM GPS OBSERVATIONS PROCESSED THROUGH OPUS, UTILIZING THE GEOID03 MODEL.
- 4) SEE VISIBLE IMPROVEMENTS EXHIBIT FOR VISIBLE IMPROVEMENTS WITHIN 600' OF PROPOSED SURFACE HOLE LOCATION.
- 5) SURFACE USE: OPEN RANGE.

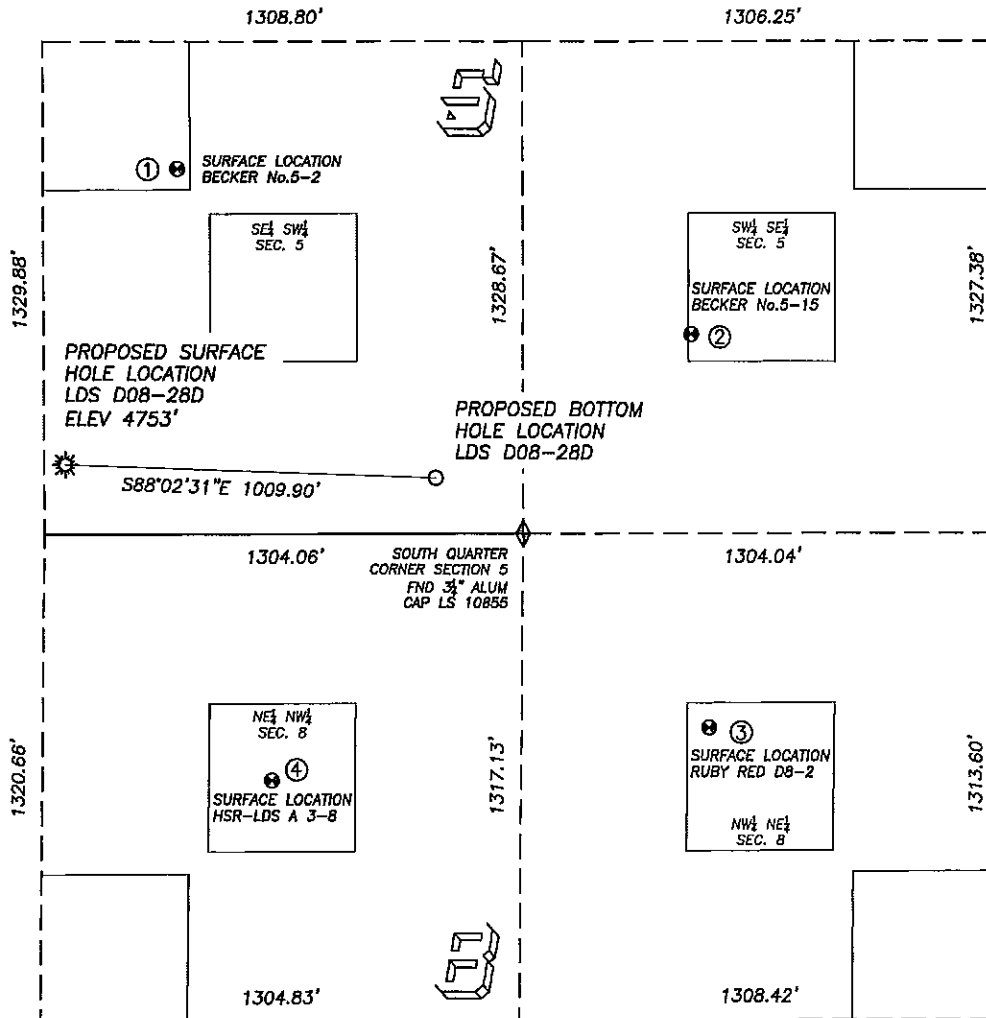
NOTICE: According to Colorado law you MUST commence any legal action based upon any defect in this W.L.C. within three years after you first discover such defect. In no event may any action based upon any such defect in this W.L.C. be commenced more than ten years from the date of the certification shown herein.

FOR AND ON BEHALF OF  
 DALEY LAND SURVEYING, INC.,  
 Robert Daley, PLS 35597



## SITE SKETCH LDS D08-28D

SECTION 5, TOWNSHIP 3 NORTH, RANGE 64 WEST OF THE 6TH PRINCIPAL MERIDIAN



0 500  
SCALE: 1" = 500'

## LEGEND

- ◆ FOUND MONUMENT AS DESCRIBED
- ☼ PROPOSED WELL
- ⊙ EXISTING WELL
- BOTTOM HOLE
- ⊗ ABANDONED WELL

①

**BECKER No. 5-2**  
SE/SW SEC. 5  
986' FSL, 1673' FWL  
1090' NW OF PROPOSED  
BOTTOM HOLE LOCATION  
LAT. N40.24988°  
LONG. W104.57816°  
EL: 4753'  
PDOP 1.6

②

**BECKER No. 5-15**  
SW/SE SEC. 5  
537' FSL, 2150' FWL  
800' NE OF PROPOSED  
BOTTOM HOLE LOCATION  
LAT. N40.24866°  
LONG. W104.57314°  
EL: 4734'  
PDOP 1.9

③

**RUBY RED D 8-2**  
NW/NE SEC. 8  
526' FNL, 2100' FEL  
1002' SE OF PROPOSED  
BOTTOM HOLE LOCATION  
LAT. N40.24575°  
LONG. W104.57298°  
EL: 4731'  
PDOP 1.2

④

**HSR-LDS A 3-8**  
NE/NW SEC. 8  
667' FNL, 1928' FWL  
935' SW OF PROPOSED  
BOTTOM HOLE LOCATION  
LAT. N40.24534°  
LONG. W104.57726°  
EL: 4746'  
PDOP 1.8

## NOTES:

1. THIS DOES NOT REPRESENT A BOUNDARY SURVEY
2. THE LATITUDES AND LONGITUDES SHOWN ARE REFERENCED TO NAD83
3. DATUM FOR ELEVATION IS NAVD88. ELEVATIONS ARE DERIVED FROM GPS-RTK OBSERVATIONS PROCESSED THROUGH OPUS, UTILIZING THE GEOID03 MODEL

## PAD DETAIL

