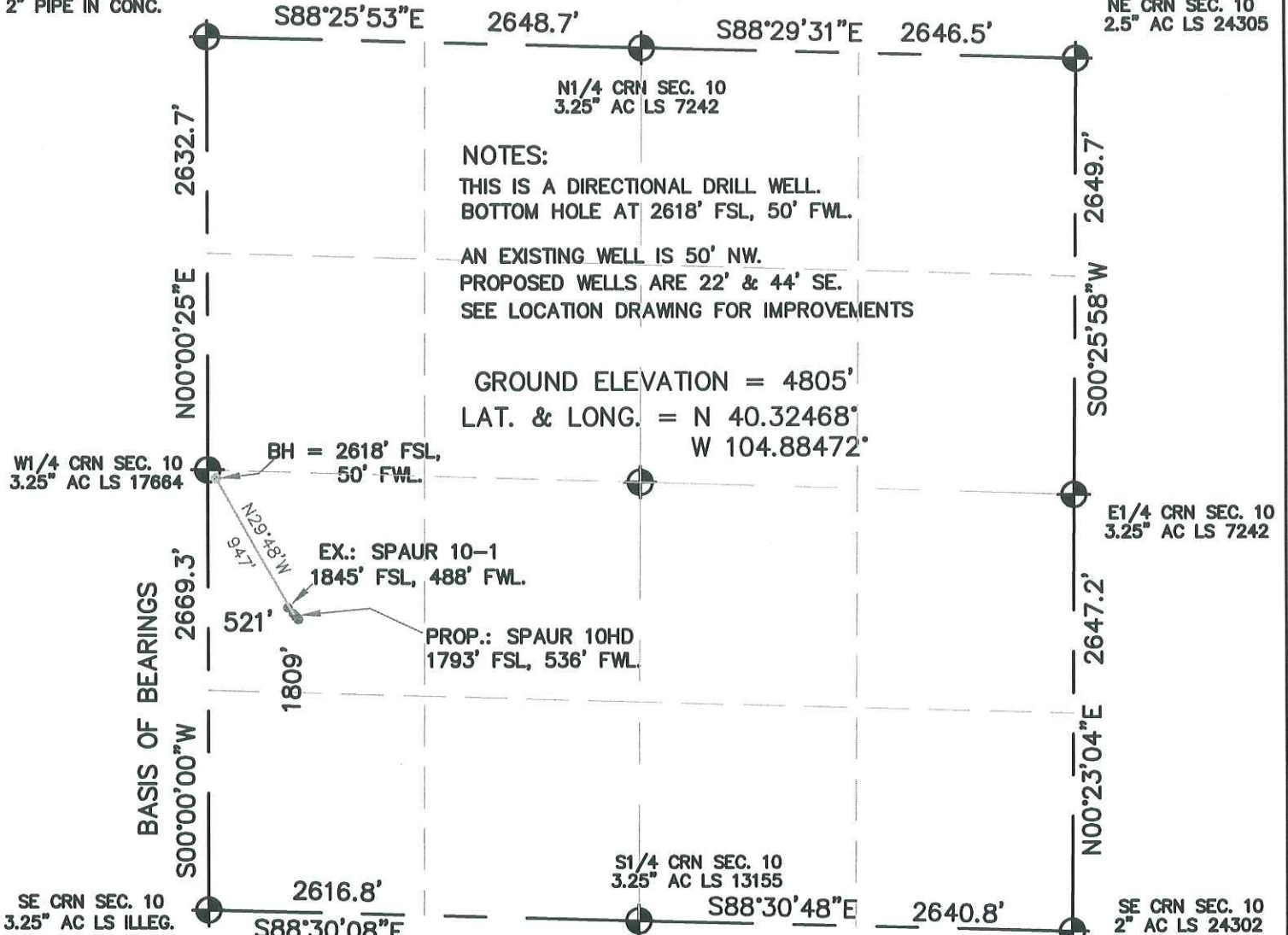


WELL LOCATION CERTIFICATE

NW CRN SEC. 10
2" PIPE IN CONC.

SECTION 10, TOWNSHIP 4 NORTH, RANGE 67 WEST, 6TH P.M.

NE CRN SEC. 10
2.5" AC LS 24305



NOTES:

THIS IS A DIRECTIONAL DRILL WELL.
BOTTOM HOLE AT 2618' FSL, 50' FWL.

AN EXISTING WELL IS 50' NW.
PROPOSED WELLS ARE 22' & 44' SE.
SEE LOCATION DRAWING FOR IMPROVEMENTS

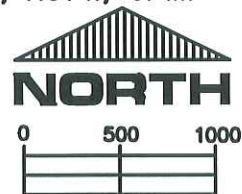
GROUND ELEVATION = 4805'
LAT. & LONG. = N 40.32468°
W 104.88472°

I HEREBY STATE TO PERTOLEUM DEV. CORP. THAT THIS WELL LOCATION CERTIFICATE
FOR THE WELL SPAUR 10GD IS LOCATED 1809' FSL & 521' FWL, SEC. 10, T4N, R67W, 6PM.



LEGEND

- = FOUND MONUMENT
- = PROPOSED WELL
- = BOTTOM HOLE



SCALE 1" = 1000'

ELEVATION SOURCE = USGS 7.5' QUAD.MAP CONTOURS
NGVD 1929 DATUM.

LAT. & LONG. ARE DIFFERENTIALLY CORRECTED (NAD'83)
USING (DGPS) WITH (PDOP) VALUES LESS THAN SIX (6).

SHOWN DISTANCES ARE FIELD MEASURED - EXTERIOR SECTION LINES
ARE DRAWN TO SCALE (BEST APPROX. OR FOUND MONUMENT).

DISTANCES TO WELL SHOWN PERPENDICULAR
TO SECTION LINES.

THOMAS G. CARLSON, PLS 24657
HORSESHOE SURVEYING, LLC

THIS IS NOT A MONUMENTED BOUNDARY SURVEY, IT IS ONLY A
DRAWING INTENDED TO DEPICT THE WELL LOCATION TO SECTION LINES.

PREPARED BY: HORSESHOE SURVEYING, LLC PO BOX 150458 LAKEWOOD, CO 80215 (720)872-0196		WELL NAME: SPAUR 10GD	
DRAWING DATE: 5-24-10		LOCATION: WELD COUNTY, CO SW1/4, SEC. 10, T4N, R67W, 6TH P.M.	
FIELD DATE: 5-18-10	BY: TGC	CHKD:	JOB NO. SHEET NO. 1 OF 1