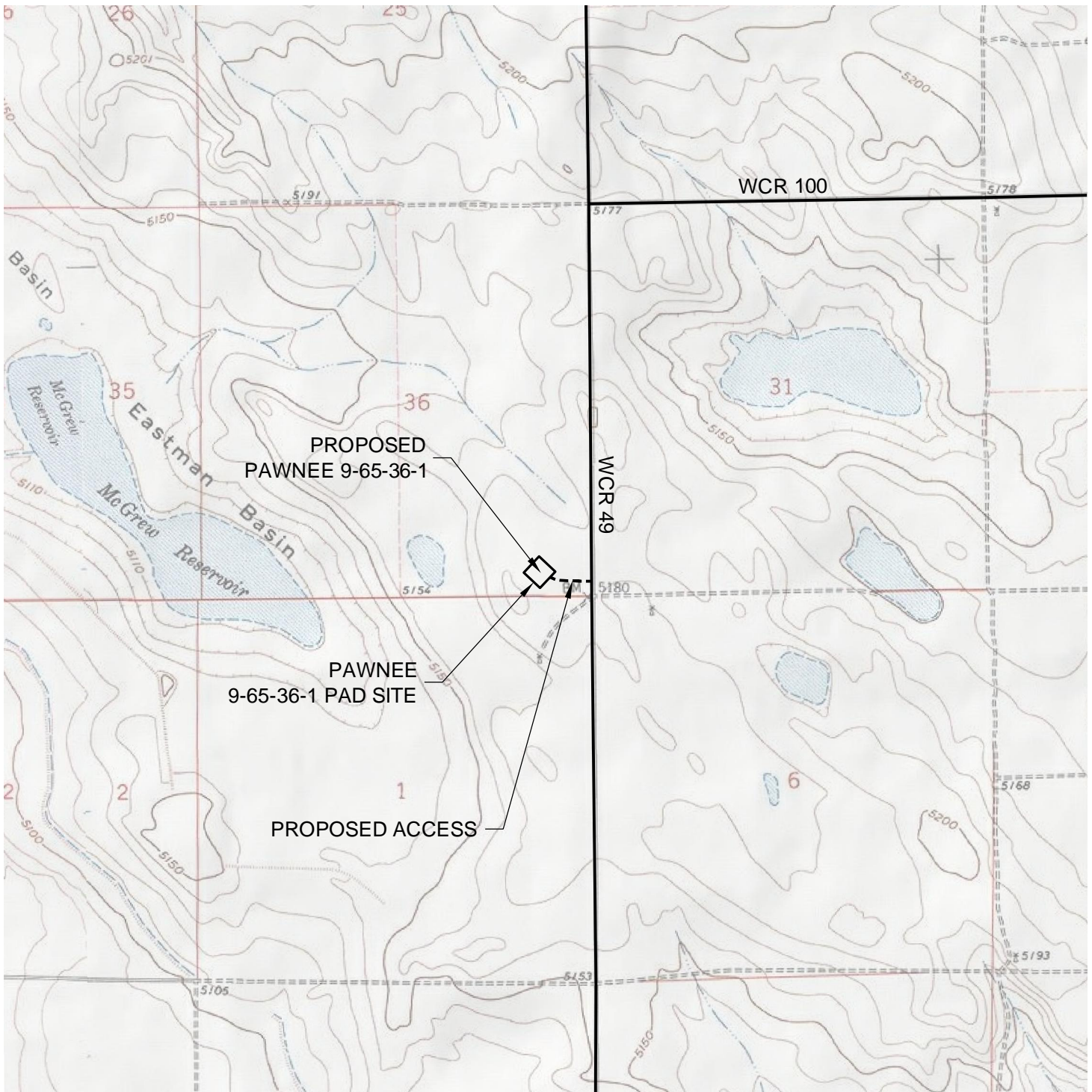


ACCESS ROAD MAP



DRIVING DIRECTIONS:

MP 0.0 - Intersection of Highway 85 & Highway 14 (E. 1st Street) in Ault;
East on Highway 14
MP 6.9 - Left on WCR 49; North along WCR 49
MP 14.9 - Left on access to Pawnee 9-65-36-1 Pad
MP 15.0 - Pawnee 9-65-36-1 Pad

6/29/10



0 2000 4000
Graphic Scale in Feet
1 inch = 2000 feet


LAND SURVEYING AND MAPPING
LAFAYETTE - WINTER PARK
Ph 303 666 0379 Fx 303 665 6320

RUBICON OIL & GAS LLC
PAWNEE 9-65-36-1

SE1/4 SE1/4 SEC. 36 T9N R65W
6th PM WELD COUNTY COLORADO