

LOCATION DRAWING

VEGETATION:
PASTURE—GRASSES

SURFACE USE:
GRAZING

GROUND SLOPE <10%

PAWNEE 9-65-36-1

LATITUDE: 40.696811

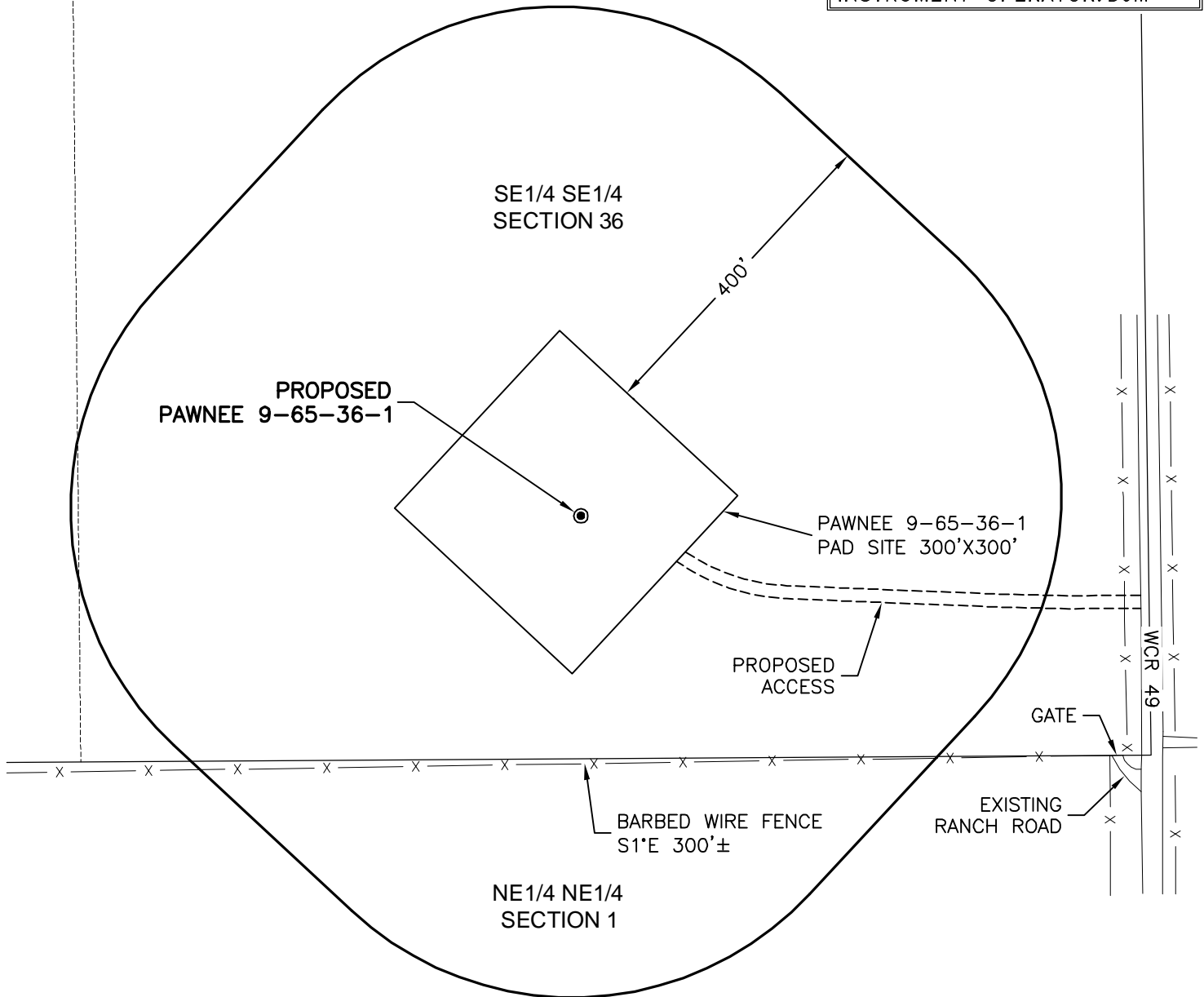
LONGITUDE: -104.603297

FOOTAGE: 300 FSL 700 FEL

GROUND ELEVATION: 5186.8

PDOP: 1.9 DATE: 5/11/2010

INSTRUMENT OPERATOR: DJM



DISTURBANCE ACREAGE:
3.5± DRILLING OPERATIONS
1.5± INTERIM RECLAIM

6/29/10



North

0 200 400
Graphic Scale in Feet
1 inch = 200 feet



LAND SURVEYING AND MAPPING
LAFAYETTE - WINTER PARK
Ph 303 666 0379 Fx 303 665 6320

RUBICON OIL & GAS LLC
PAWNEE 9-65-36-1

SE1/4 SE1/4 SEC. 36 T9N R65W
6th PM WELD COUNTY COLORADO