

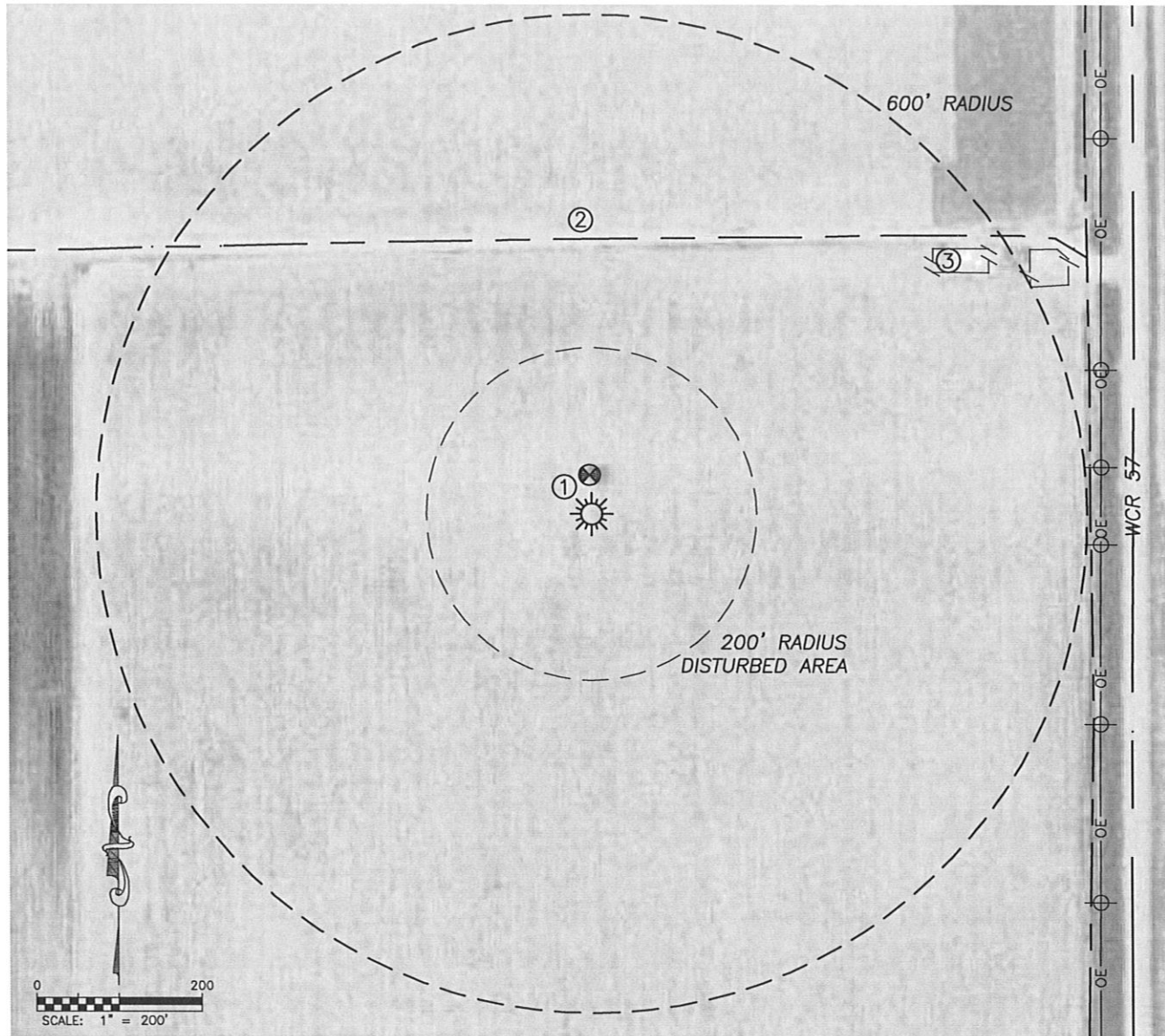
DALEY LAND SURVEYING, INC.

PARKER, CO. 80134

303 953 9841

VISIBLE IMPROVEMENTS SKETCH HERBST C22-22D

SECTION 22, TOWNSHIP 4 NORTH, RANGE 64 WEST OF THE 6TH PRINCIPAL MERIDIAN



①

WELL:
COLEMAN 22-814
47'± N

②

CENTERLINE
FIELD ROAD
330'± N

③

PROD. FACILITY
510'± NE

NEAREST OVERHEAD POWER 615'± E