

SAVAGE RWF 321-34

PROPOSED PAD ELEV.: 5297.0
EXISTING GROUND ELEV.: 5297.1

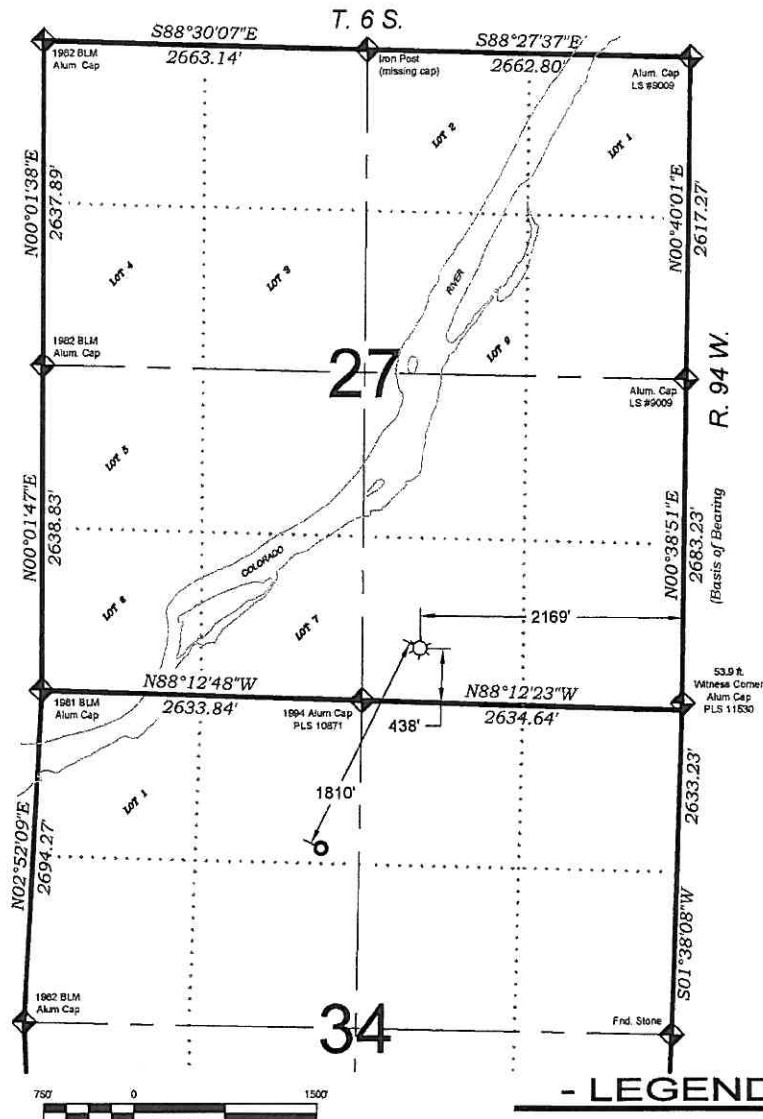
SURFACE HOLE LOCATION

438 FSL, 2169 FEL
Lat.: 39.490185°N
Long.: 107.872473°W
COSP N: 1612171.4
COSP E: 2330507.7

BOTTOM HOLE LOCATION

1210 FNL, 2365 FWL
Lat.: 39.485671°N
Long.: 107.875152°W
COSP N: 1610547.5
COSP E: 2329708.9

SEE CONSTRUCTION LAYOUT
PLAT FOR VISIBLE IMPROVEMENTS
WITHIN 400' OF THIS LOCATION



GRAPHIC SCALE IN FEET
1 INCH = 1500 FEET

- LEGEND -

FIELD LOCATED SECTION
MONUMENTS AS DESCRIBED

FIELD SURVEYED
WELL LOCATION

CALCULATED BOTTOM
HOLE LOCATION

CALCULATED SECTION
CORNER LOCATION

SURVEYORS STATEMENT

I, MICHAEL J. LANGHORNE, A REGISTERED LAND SURVEYOR IN THE STATE OF COLORADO, DO HEREBY CERTIFY THAT THE SURVEY SHOWN HEREON WAS PREPARED UNDER MY DIRECT SUPERVISION AND HAS BEEN STAKED ON THE GROUND AS SHOWN ON THE PLAT AND CHECKING THAT THIS MAP IS A TRUE REPRESENTATION THEREOF.

Michael J. Langhorne

MICHAEL J. LANGHORNE, COLORADO REGISTRATION NO. 36572
FOR AND ON BEHALF OF
BOOKCLIFF SURVEY SERVICES, INC.

REFERENCES

- 1) DEPENDENT RESURVEY AND SURVEY OF TRACT 38 T. 6 S., R. 94 W., 6th P.M (GLO PLAT)
- 2) U.S.G.S. QUAD: RULISON, CO; NORTH MAMM PEAK, CO

REVISED: 6/4/10

NOTES

- 1) ELEVATIONS BASED ON N.A.V.D. 1988 PUBLISHED COORDINATES.
- 2) LATITUDES AND LONGITUDES ARE BASE ON NAD 83, PUBLISHED COORDINATES
- 3) STATE PLANE COORDINATES ARE BASED ON COLORADO CENTRAL ZONE, U.S. SURVEY FEET.
- 4) ELEVATION MASK SET TO 15"
- 5) GPS OPERATOR J. KIRKPATRICK, OBSERVED A PDOP 1.5 ON SURVEY POINT NUMBER 66065.
- 6) SURFACE AND BOTTOM HOLE LOCATIONS ARE MEASURED 90° FROM SECTION LINES.

WELL LOCATION PLAT Prepared for:

Williams. Williams Production, RMT

SW1/4 SE1/4, SECTION 27
T. 6 S., R. 94 W. of the 6th. P.M.
GARFIELD COUNTY, COLORADO

130 East Third Street
Boulder, Colorado 80501
Ph: (970) 425-1330
Fax: (970) 425-2770



BOOKCLIFF
Survey Services, Inc.

SURVEY DATE: 11/6/08
MAP DATE: 6/4/10
SCALE: 1" = 1500'
PLAT: 1 of 9
PROJECT: Williams