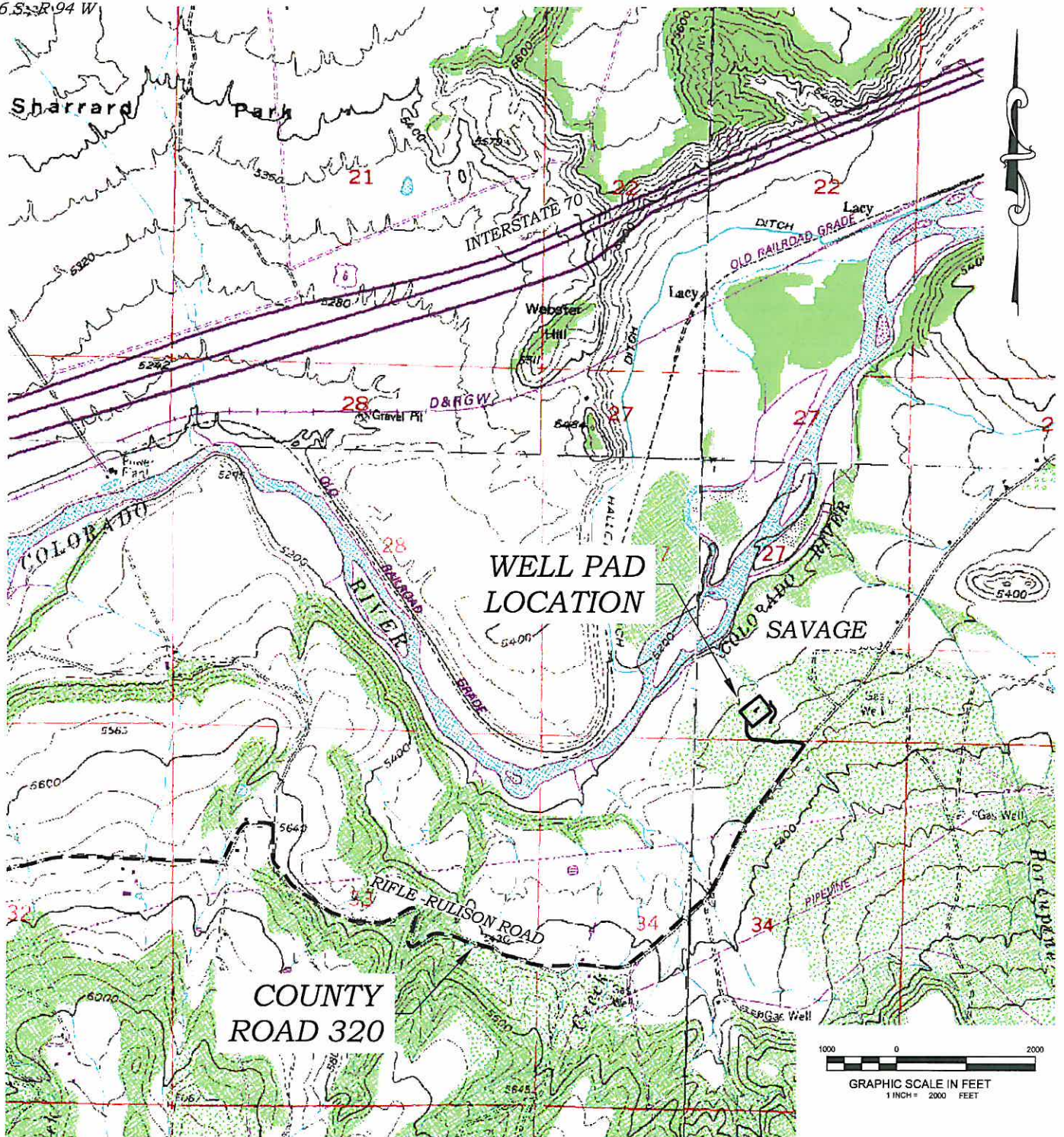


Section 27
T. 6 S. R. 94 W



ACCESS DESCRIPTION:
FROM THE INTERSECTION OF STATE HIGHWAY 6 AND COUNTY ROAD 323 (RULISON ROAD) NORTH OF RULISON, PROCEED SOUTHERLY ALONG COUNTY ROAD 323 (RULISON ROAD) ± 1.1 MILES TO THE INTERSECTION WITH COUNTY ROAD 309 (RULISON PARACHUTE ROAD), PROCEED LEFT IN AN EASTERLY DIRECTION ± 2.3 MILES TO THE INTERSECTION WITH COUNTY ROAD 320 (RIFLE RULISON ROAD), PROCEED RIGHT IN AN EASTERLY DIRECTION ± 2.1 MILES TO AN INTERSECTION WITH A DIRT/GRAVEL ROAD, PROCEED LEFT IN A WESTERLY DIRECTION ± 0.2 MILES TO THE RMV 28-27 DRILL PAD LOCATION, AS SHOWN HEREON.

REVISED: 6/4/10

Construction Plan Prepared for:

Williams. Williams Production, RMT

RMV 28-27 Drill Pad - Plat 5
ACCESS ROAD MAP

135 East Third Street
Rifle, Colorado 81450
Ph. (970) 625-1330
Fax (970) 625-2773

BOOKCLIFF
Survey Services, Inc.

SCALE: 1" = 2000'
DATE: 11/13/08
PLAT: 5 of 9
PROJECT: Williams Valley
DFT: DPM