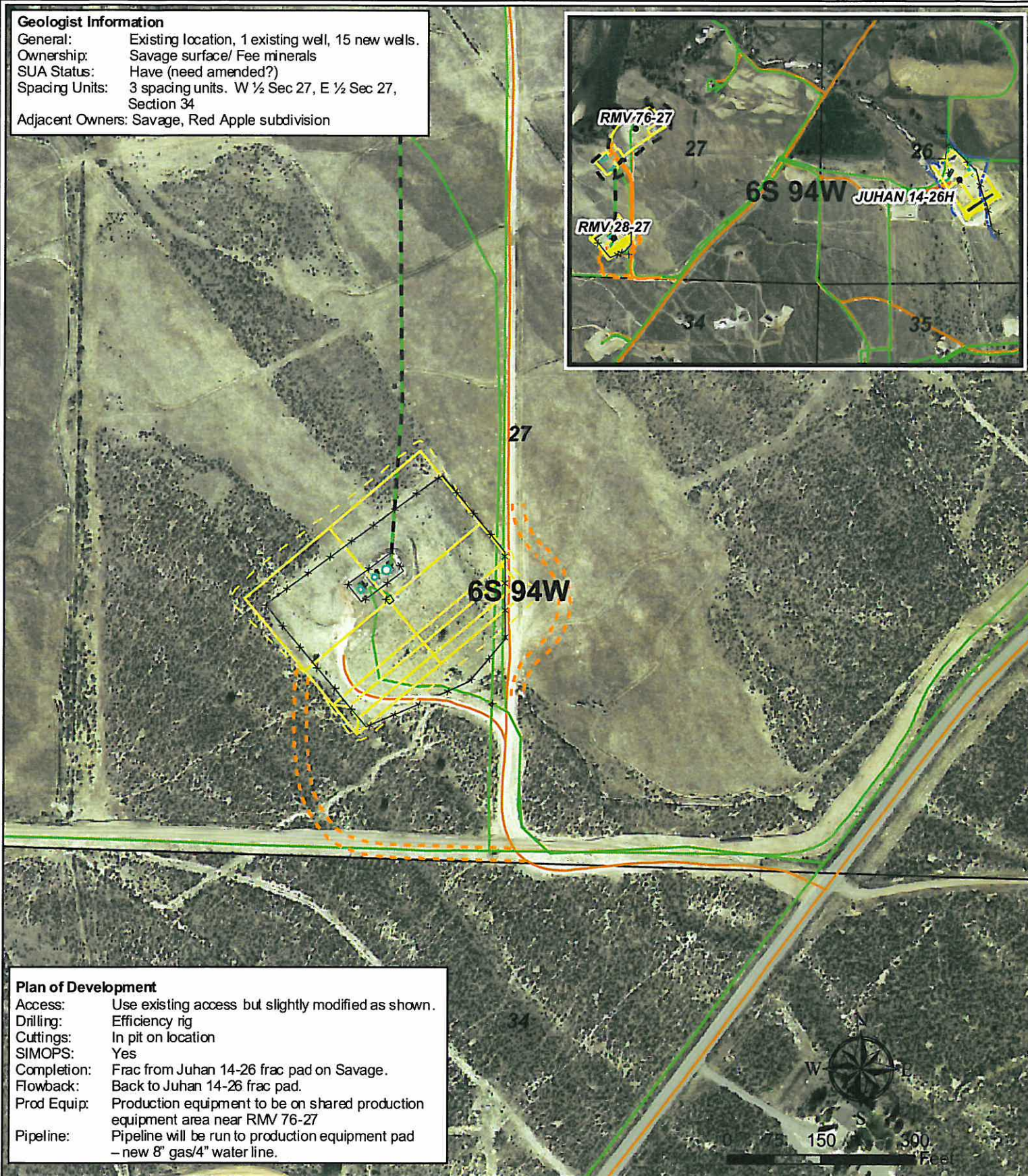


Geologist Information

General: Existing location, 1 existing well, 15 new wells.
Ownership: Savage surface/ Fee minerals
SUA Status: Have (need amended?)
Spacing Units: 3 spacing units. W ½ Sec 27, E ½ Sec 27, Section 34
Adjacent Owners: Savage, Red Apple subdivision



Plan of Development

Access: Use existing access but slightly modified as shown.
Drilling: Efficiency rig
Cuttings: In pit on location
SIMOPS: Yes
Completion: Frac from Juhan 14-26 frac pad on Savage.
Flowback: Back to Juhan 14-26 frac pad.
Prod Equip: Production equipment to be on shared production equipment area near RMV 76-27
Pipeline: Pipeline will be run to production equipment pad – new 8" gas/4" water line.

Legend

- Proposed Road
- Existing Production Equipment
- Proposed Daylight Line
- Proposed Pad or Pit
- Existing Fence
- Flow Line Route
- Pipeline (Valley)
- Existing Road

Williams Production RMT

RMV 28-27 Plan of Development
T6S R 95W, Section 27

Date Prepared: July 7, 2010

