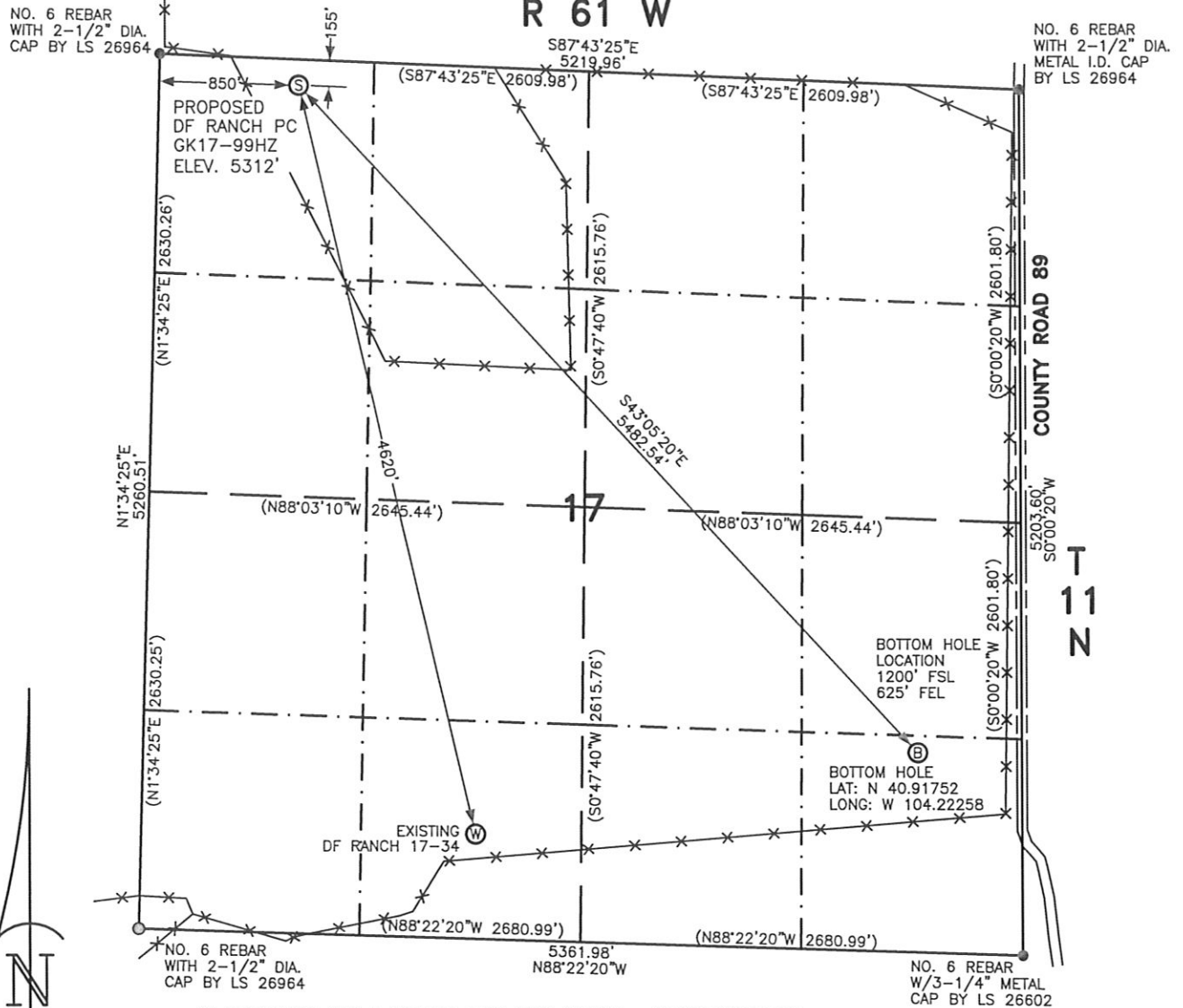


WELL LOCATION CERTIFICATE

THIS MAP DOES NOT REPRESENT A BOUNDARY SURVEY

SECTION 17
TOWNSHIP 11 NORTH
RANGE 61 WEST



IN ACCORDANCE WITH A REQUEST FROM RYAN ANTONIO - NOBLE ENERGY INC. LEIBERT-McATEE & ASSOCIATES, INC HAS DETERMINED THE LOCATION OF THE DF RANCH PC GK17-99HZ WELL TO BE 155' FNL AND 850' FWL, AS MEASURED AT NINETY (90) DEGREES FROM THE SECTION LINES OF SECTION 17, TOWNSHIP 11 NORTH, RANGE 61 WEST, 6TH PRINCIPAL MERIDIAN, WELD COUNTY, COLORADO.

THE BOTTOM HOLE LOCATION PROVIDED BY THE CLIENT IS TO BE 1200' FSL AND 625' FEL.

I HEREBY CERTIFY THAT THIS WELL LOCATION CERTIFICATE WAS PREPARED BY ME, OR UNDER MY DIRECT SUPERVISION. THAT THE FIELD WORK WAS COMPLETED ON 5/6/2010, FOR AND ON BEHALF OF NOBLE ENERGY INC, THAT IT IS NOT A LAND SURVEY PLAT OR AN IMPROVEMENT SURVEY PLAT, AND THAT IT IS NOT TO BE RELIED UPON FOR ESTABLISHMENT OF FENCE, BUILDING, OR OTHER FUTURE IMPROVEMENT LINES.

NOTES:

- 1) BASIS OF BEARINGS FOR THIS MAP ARE BASED UPON GPS OBSERVATIONS MADE ON 5/6/2010 BETWEEN MONUMENT LOCATED AT THE NORTHWEST SECTION CORNER AND THE NORTHEAST SECTION CORNER OF SAID SECTION AND WITH ALL BEARINGS SHOWN HEREON RELATIVE THERETO.
- 2) ELEVATIONS ARE BASED UPON NGS OPUS SOLUTION NAVD 88 DATUM.
- 3) SEE VISIBLE IMPROVEMENTS EXHIBIT FOR ALL IMPROVEMENTS WITHIN 600'.
- 4) THE LOCATION FALLS IN PASTURE.

LATITUDE & LONGITUDE (NAD 83 SURFACE HOLE):

LATITUDE: N 40.92851
LONGITUDE: W 104.23614
PDOP: 2.3
QUARTER-QUARTER: NW1/4NW1/4
NEAREST PROPERTY LINE: 155' NORTH

LEGEND

- (S) PROPOSED SURFACE LOCATION
- (B) PROPOSED BOTTOM LOCATION
- (W) EXISTING WELL

== == == ROAD

-x-x-x- FENCE

CALCULATED DIMENSIONS ARE IN PARENTHESES

GPS OPERATOR: DARREN VEAL
DWG NO. 310-10

NOTICE: According to Colorado law you MUST commence any legal action based upon any defect in the W.L.C. within three years after you first discover such defect. In no event may only action based upon any defect in this W.L.C. be commenced more than ten years from this sold date of the certification shown hereon.

COMPLETED 5-17-10
NICOLE F. HAY
FOR AND ON BEHALF OF
LEIBERT-McATEE & ASSOCIATES, INC
P.L.S. 38044



SECTION 17
TOWNSHIP 11 NORTH
RANGE 61 WEST

1 EXISTING D-F RANCH 17-34
SW1/4SW1/4 SEC. 17
630' FSL
2029' FWL
EL 5346'
N 40.91617
W 104.23231
PDOP 2.1

1) THIS SKETCH DOES NOT REPRESENT A BOUNDARY SURVEY.
2) THE DATUM FOR THE LATITUDES AND LONGITUDES ON THIS SKETCH IS NAD83.
3) ELEVATIONS ARE BASED UPON NGS OPUS SOLUTION NAVD 88 DATUM.

(S) PROPOSED SURFACE LOCATION
 (B) PROPOSED BOTTOM LOCATION
 (W) EXISTING WELL

ROAD
 FENCE
 CALCULATED DIMENSIONS
 ARE IN PARENTHESES



SCALE: 1"=1000'

0 500 1000

SCALE IN FEET