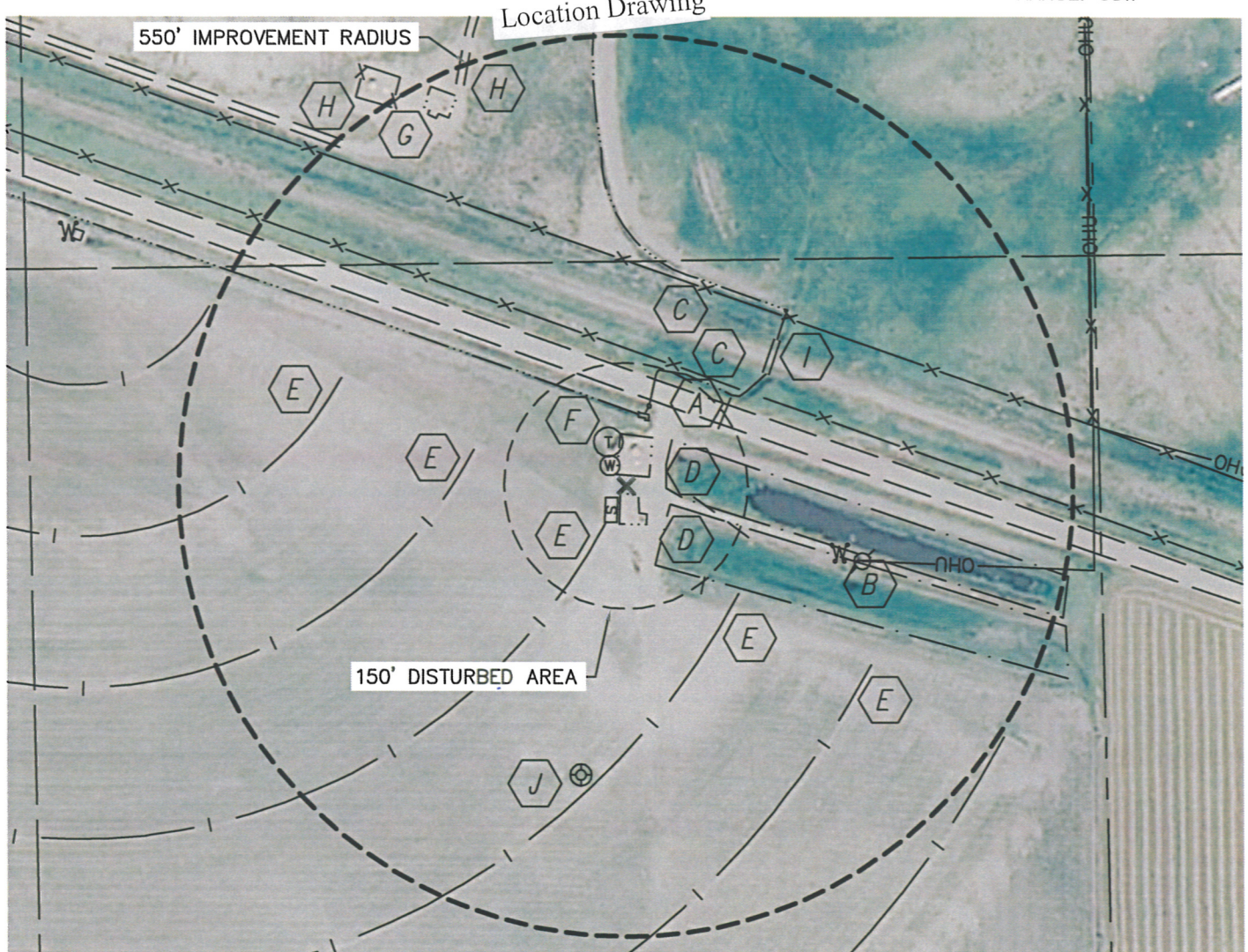


PRODUCTION FACILITY VISIBLE IMPROVEMENTS

SECTION: 30
TOWNSHIP: 5N
RANGE: 63W



REFERENCE POINT LOCATION:

LATITUDE: 40.37323°N
LONGITUDE: 104.48121°W
PDOP: 2.0
DATE: 5/10/10
1/41/4: SE1/4NW1/4
FNL: 1604'
FWL: 2070'
DISTANCE TO WELL: 715'
ASSOCIATED NEW WELLS:
FIVE RIVERS BB30-19
ASSOCIATED EXISTING WELLS:
MONFORTBB 30-6

IMPROVEMENTS:

- | | | | | | |
|--|---|---|--|---|----------------------------|
| | A | COUNTY ROAD 109' N | | J | EX. MONFORT BB 30-6 357' S |
| | B | OVERHEAD UTILITY LINE 305' E | | | |
| | C | FENCE 158' N, 258' N | | | |
| | D | POND 50' E, 59' E | | | |
| | E | PIVOT TRACK 374' W, 192' W, 50' S, 191' SE, 372' SE | | | |
| | F | DITCH 84' N | | | |
| | G | EX. PRODUCTION FACILITY 499' NW | | | |
| | H | FIELD ROAD 530' NW, 544' NW | | | |
| | I | CONCRETE CULVERT 221' NE | | | |

LEGEND

	REFERENCE POINT
	PROPOSED TANK
	PROPOSED WATER VAULT
	PROPOSED SEPARATOR
	PROPOSED BURNER
	PROPOSED METER

ALL DISTANCES ARE APPROXIMATE.

