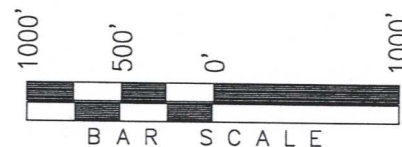


T2S, R97W, 6th P.M.

Exxon Mobil Corporation

WELL LOCATION, FREEDOM UNIT 297-28B5,
LOCATED AS SHOWN IN THE SW 1/4 NE 1/4
OF SECTION 28, T2S, R97W, 6th P.M., RIO
BLANCO COUNTY, COLORADO.



◆ = SECTION CORNERS LOCATED

BASIS OF BEARINGS & BASIS OF ELEVATION

BASIS OF BEARINGS IS A LINE BETWEEN MAGNOLIA & MEYERS TRIANGULATION
STATION GRID COORDINATES WHICH IS ASSUMED TO BEAR S82°36'07"E.

BASIS OF ELEVATION IS MAGNOLIA TRIANGULATION STATION LOCATED IN THE
NW 1/4 OF SECTION 9, T2S, R96W, 6th P.M. REPORTED FROM THE NATIONAL
GEODETIC SURVEY (NAVD 88). ELEVATION IS REPORTED AS BEING 7529 FEET.

NOTES:

1. Well footages are measured at right angles to the
Section Lines.
2. Bearings are based on Global Positioning Satellite
observations.
3. G.P.S. Operator: C. MILLER, (PDOP) = 2.3

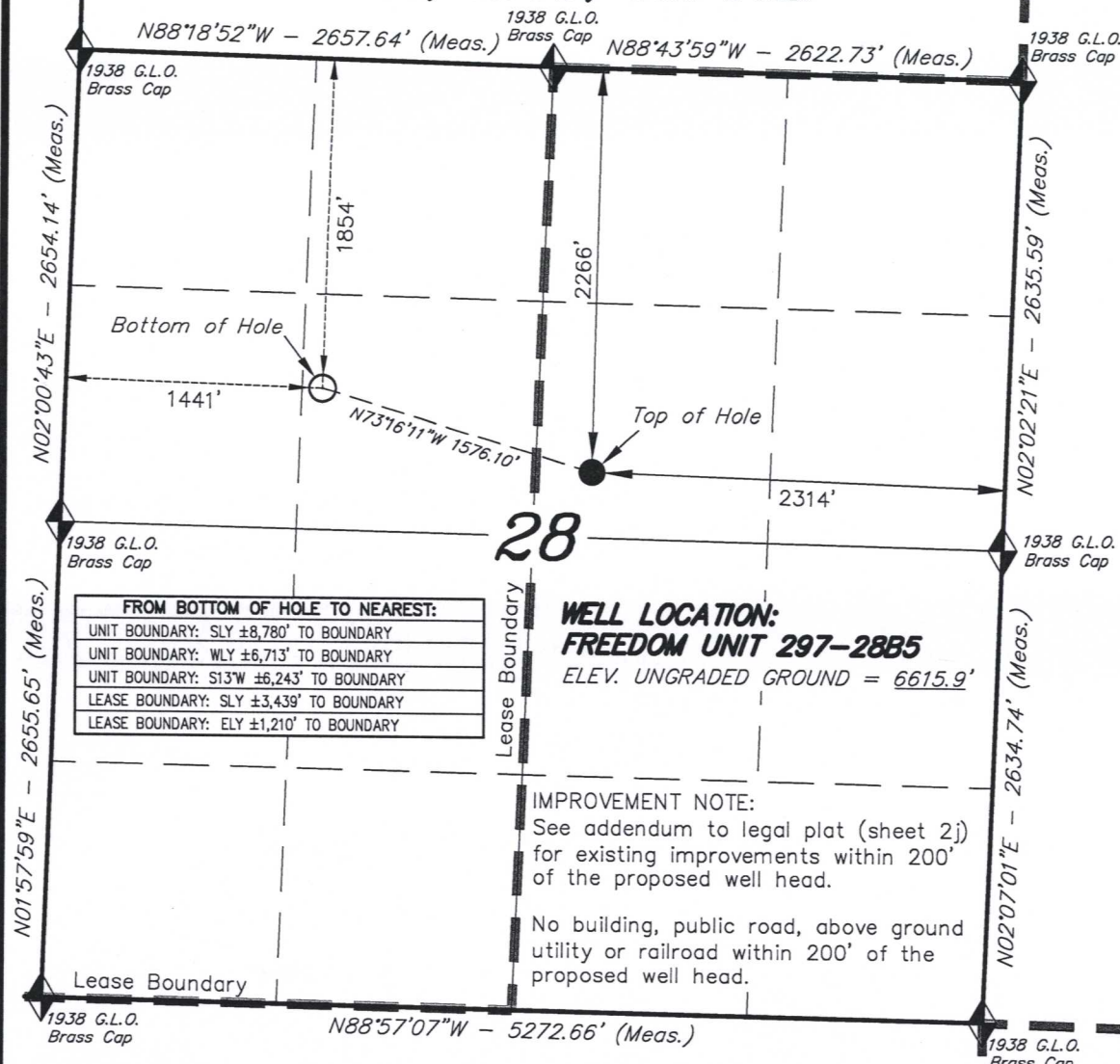
THIS IS TO CERTIFY THAT THE ABOVE WAS PREPARED
FROM FIELD NOTES OF ACTUAL SURVEY MADE BY ME, OR
UNDER MY SUPERVISION AND THAT THE SAME ARE TRUE
AND CORRECT TO THE BEST OF MY KNOWLEDGE AND BELIEF.

STATE OF COLORADO
30125
REGISTERED LAND SURVEYOR
REGISTRATION NO. 11890
STATE OF COLORADO

TRI STATE LAND SURVEYING & CONSULTING

180 NORTH VERNAL AVE. - VERNAL, UTAH 84078
(435) 781-2501

DATE SURVEYED: 12-10-05	SURVEYED BY: C.M.	SHEET 1e OF 8
DATE DRAWN: 02-20-06	DRAWN BY: D.COX	
REVISED: 3-29-06 R.V.C.	SCALE: 1" = 1000'	



WELL LOCATION:
FREEDOM UNIT 297-28B5
ELEV. UNGRADED GROUND = 6615.9'

IMPROVEMENT NOTE:
See addendum to legal plat (sheet 2)
for existing improvements within 200'
of the proposed well head.

No building, public road, above ground
utility or railroad within 200' of the
proposed well head.

FROM BOTTOM OF HOLE TO NEAREST:	
UNIT BOUNDARY: SLY ±8,780' TO BOUNDARY	
UNIT BOUNDARY: WLY ±6,713' TO BOUNDARY	
UNIT BOUNDARY: S13°W ±6,243' TO BOUNDARY	
LEASE BOUNDARY: SLY ±3,439' TO BOUNDARY	
LEASE BOUNDARY: ELY ±1,210' TO BOUNDARY	

CO-NORTH NAD 83 (SURFACE LOCATION)	CO-NORTH NAD 83 (BOTTOM HOLE)	FROM SURFACE LOCATION TO NEAREST:
LATITUDE = 39°50'54.58" (39.848494)	LATITUDE = 39°50'58.59" (39.849608)	TOWN/COMMUNITY: NE 20.2 MILES TO MEEKER
LONGITUDE = 108°17'09.06" (108.285851)	LONGITUDE = 108°17'28.58" (108.291273)	UNIT BOUNDARY: SLY ±8,383' TO BOUNDARY
STATE PLANE COORDINATES	STATE PLANE COORDINATES	UNIT BOUNDARY: WLY ±8,232' TO BOUNDARY
N: = 1199943.399 E: = 2217928.722	N: = 1200396.946 E: = 2216419.873	UNIT BOUNDARY: S27°W ±6,340' TO BOUNDARY
CO-NORTH NAD 27 (SURFACE LOCATION)	CO-NORTH NAD 27 (BOTTOM HOLE)	LEASE BOUNDARY: NLY ±2,266' TO BOUNDARY
LATITUDE = 39°50'54.68" (39.848521)	LATITUDE = 39°50'58.69" (39.849635)	LEASE BOUNDARY: WLY ±316' TO BOUNDARY
LONGITUDE = 108°17'06.75" (108.285208)	LONGITUDE = 108°17'26.27" (108.290630)	EXISTING WELL: SELY ±4,505' TO 1 JOHNSON
STATE PLANE COORDINATES	STATE PLANE COORDINATES	
N: = 199944.467 E: = 1218088.834	N: = 200398.000 E: = 1216580.000	