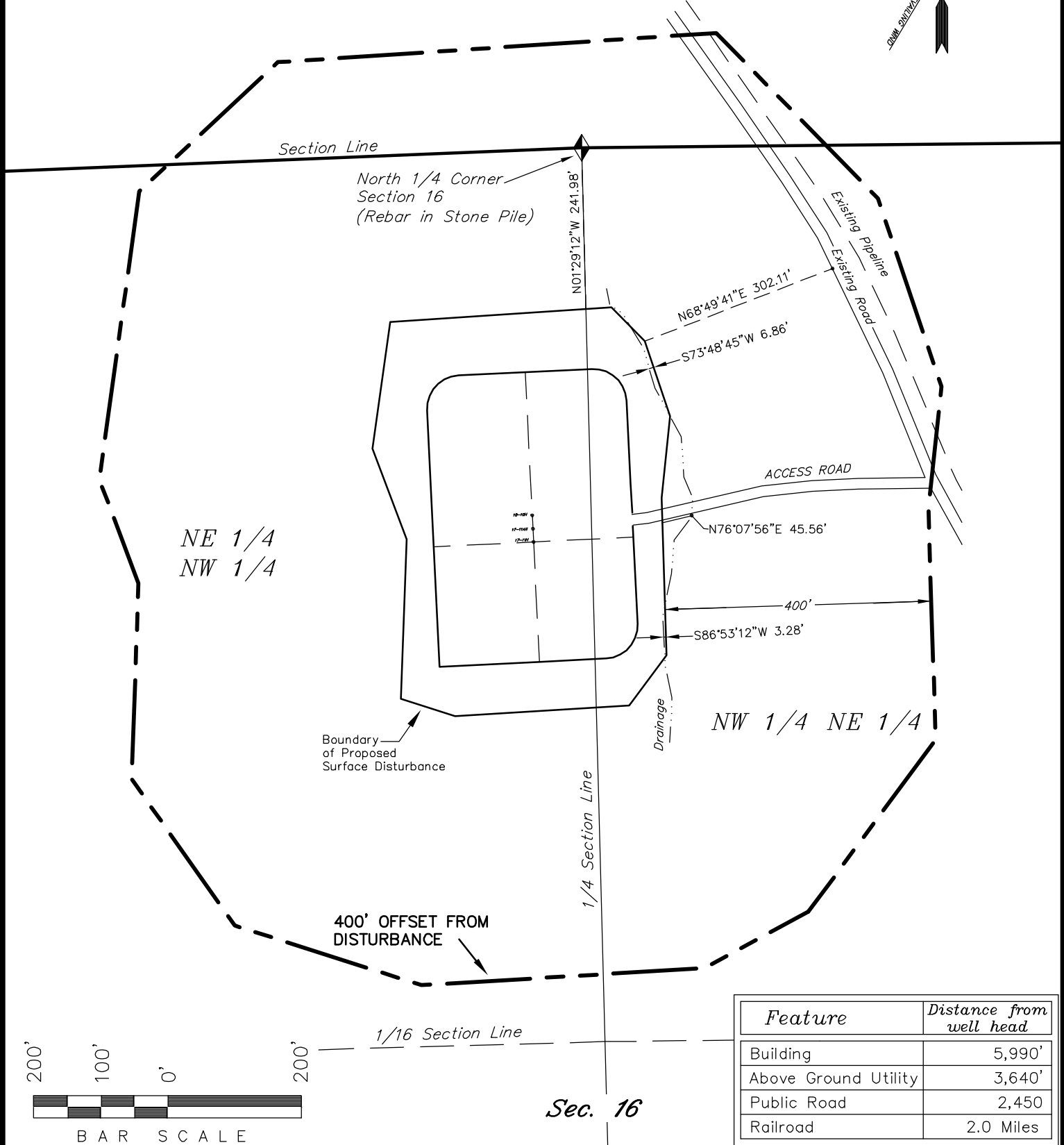
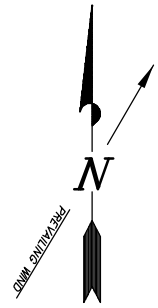


LOCATION DRAWING  
ADDENDUM TO LEGAL PLATS FOR  
**WELL PAD (C160U)**  
Section 16, T8S, R96W, 6th P.M.



<i>Feature</i>	<i>Distance from well head</i>
Building	5,990'
Above Ground Utility	3,640'
Public Road	2,450
Railroad	2.0 Miles

SURVEYED BY: C.D.S.	DATE SURVEYED: 06-25-10
DRAWN BY: F.T.M.	DATE DRAWN: 06-14-10
SCALE: 1" = 200'	REVISED: 06-28-10 L.C.S.

**Tri State** (43)  
*Land Surveying, Inc.*  
180 NORTH VERNAL AVE. VERNAL, UTAH 84078

(435) 781-2501

SHEET  
2d  
OF 11

# ENCANA OIL & GAS (USA) INC

## WELL PAD INTERFERENCE PLAT WELL PAD (C160U)

Section 16, T8S, R96W, 6th P.M.

### TOP HOLE FOOTAGES

KEINATH FEDERAL 17-11H (C160U)  
588' FNL & 2530' FWL

KEINATH FEDERAL 17-11AH (C160U)  
568' FNL & 2530' FWL

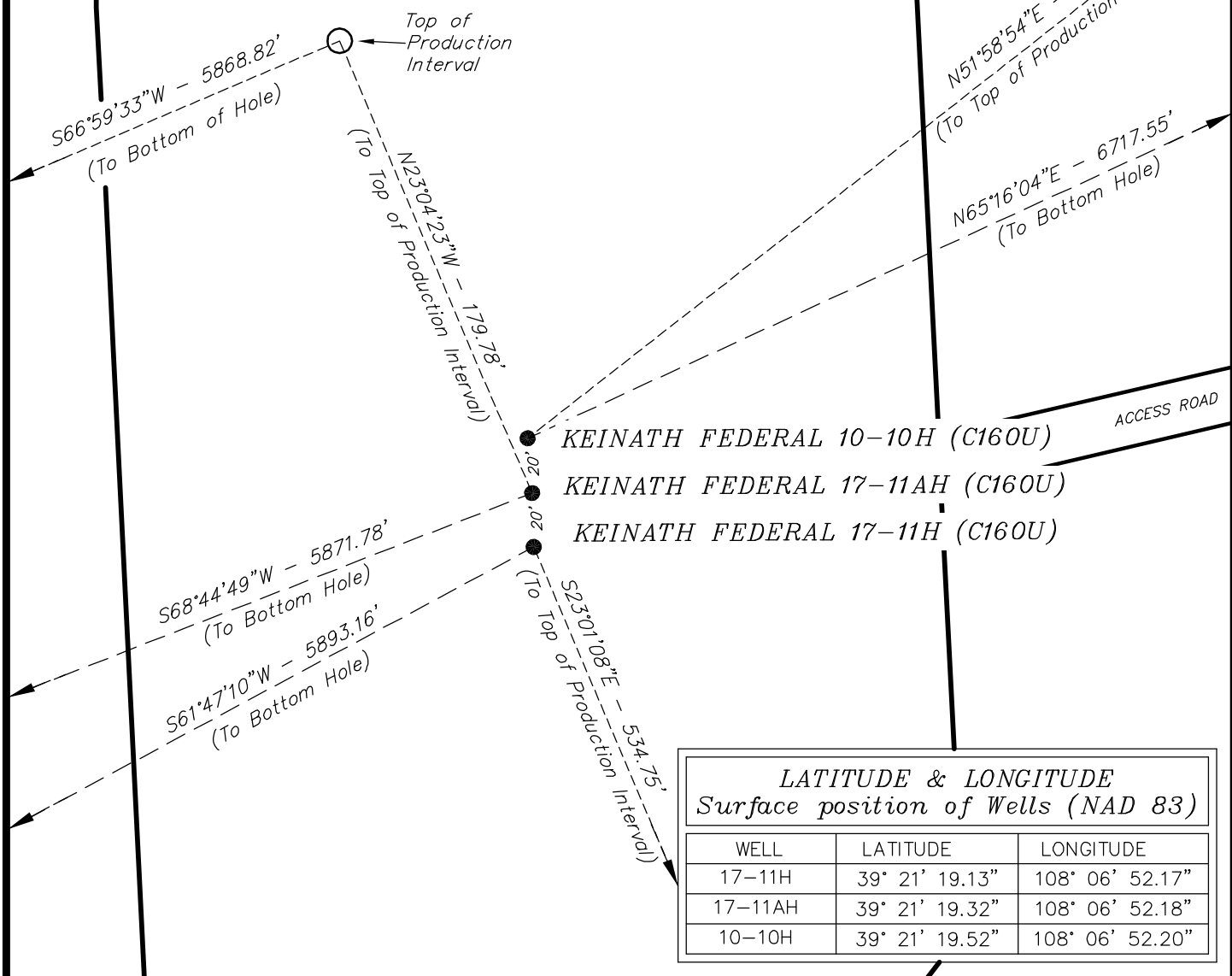
KEINATH FEDERAL 10-10H (C160U)  
548' FNL & 2529' FWL

### BOTTOM HOLE FOOTAGES

KEINATH FEDERAL 17-11H (C160U)  
2027' FSL & 2539' FWL

KEINATH FEDERAL 17-11AH (C160U)  
2681' FSL & 2267' FWL

KEINATH FEDERAL 10-10H (C160U)  
2163' FSL & 2012' FEL



### LATITUDE & LONGITUDE Surface position of Wells (NAD 83)

WELL	LATITUDE	LONGITUDE
17-11H	39° 21' 19.13"	108° 06' 52.17"
17-11AH	39° 21' 19.32"	108° 06' 52.18"
10-10H	39° 21' 19.52"	108° 06' 52.20"

### RELATIVE COORDINATES From top hole to bottom hole

WELL	NORTH	EAST
17-11H	-2,786'	-5,193'
17-11AH	-2,128'	-5,472'
10-10H	2,810'	6,101'

**Note:**  
Bearings are based on G.P.S. observations.

### LATITUDE & LONGITUDE Bottom of hole position (NAD 83)

WELL	LATITUDE	LONGITUDE
17-11H	39° 20' 51.60"	108° 07' 58.26"
17-11AH	39° 20' 58.29"	108° 08' 01.83"
10-10H	39° 21' 47.27"	108° 05' 34.53"

SURVEYED BY: L.D.V. DATE SURVEYED: 07-11-06  
DRAWN BY: F.T.M. DATE DRAWN: 10-10-06  
SCALE: 1" = 60' REVISED: L.C.S. 06-28-10

**Tri State**  
Land Surveying, Inc.  
180 NORTH VERNAL AVE. VERNAL, UTAH 84078

(435) 781-2501

SHEET  
3  
OF 11

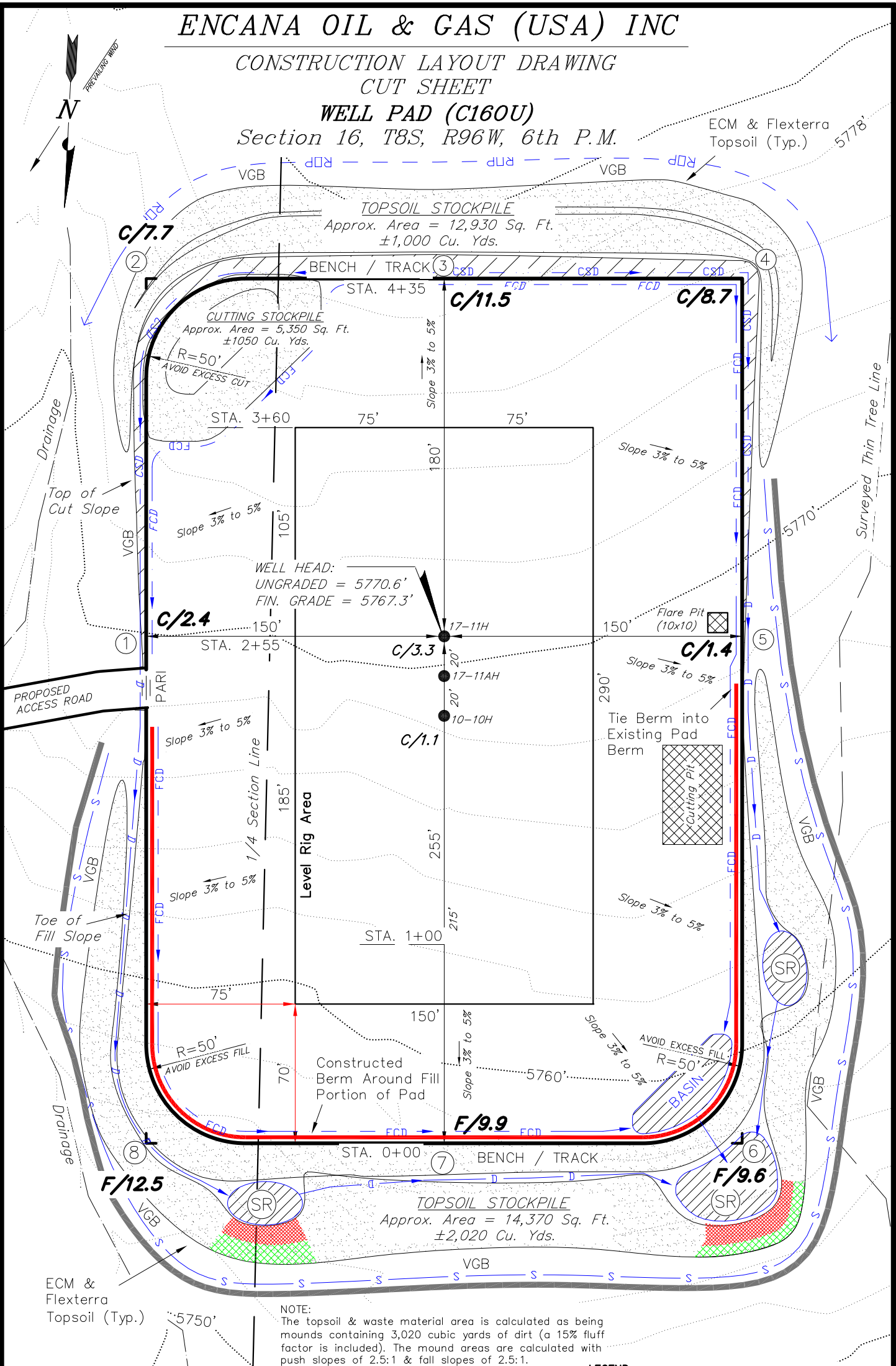
ENCANA OIL & GAS (USA) INC

CONSTRUCTION LAYOUT DRAWING  
CUT SHEET

WELL PAD (C160U)

Section 16, T8S, R96W, 6th P.M.

ECM & Flexterra  
Topsoil (Typ.)



NOTES:

- (1) Slope Track and/or Terrace All Slopes and Piles
- (2) Erosion Control & Seed Topsoil Stockpile
- (3) Erosion Control & Seed Outside Slopes of Stockpiles
- (4) Slope away from Substructure Areas 1% to 3% to Flow Control Ditch on Entire Pad
- (5) When Possible the Cut and Fill Slopes Directly Behind the Proposed Production Equipment Should be Reclaimed with 3:1 Slopes and Topsoil Spread During Pad Construction.
- (6) BMP Selection and Position may Change Depending on Actual Conditions Encountered During the Construction Process.
- (7) All CMP's Shall have Inlet and Outlet Protection.
- (8) All BMP's to be constructed to Encana Oil & Gas (USA) Inc. BMP Manual's Specifications

NOTE:

The topsoil & waste material area is calculated as being mounds containing 3,020 cubic yards of dirt (a 15% fluff factor is included). The mound areas are calculated with push slopes of 2.5:1 & fall slopes of 2.5:1.

LEGEND:

- PARI = PAD/ACCESS ROAD INTERFACE  
SR = SEDIMENT RESERVOIR  
ST = SEDIMENT TRAP  
R.O.P. = RUN-ON PROTECTION  
= PERIMETER CONTROL (WATTLES)  
CDM = CHECK DAM  
FCD = FLOW CONTROL DITCH  
ECB = EROSION CONTROL BLANKET  
D = FILL DIVERSION TO SEDIMENT TRAP  
CSD = CUT SLOPE DIVERSION (BERM TOE OF CUT SLOPE)  
VGB = VEGETATION BUFFER (UNDISTURBED LAND INSIDE PC)  
= SEED, ECB & FLEX  
= LEVEL SPREADER

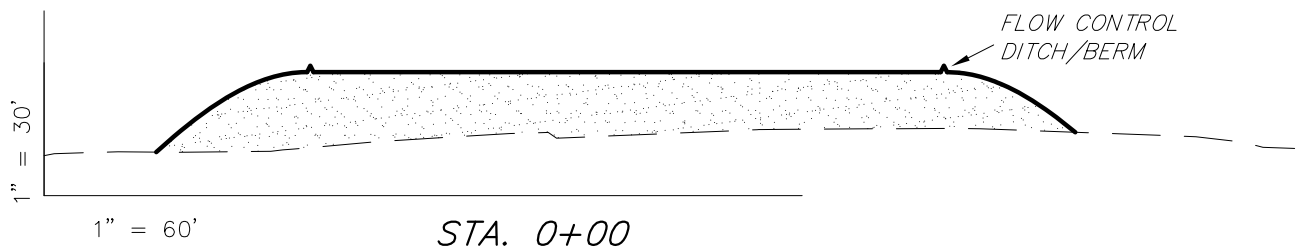
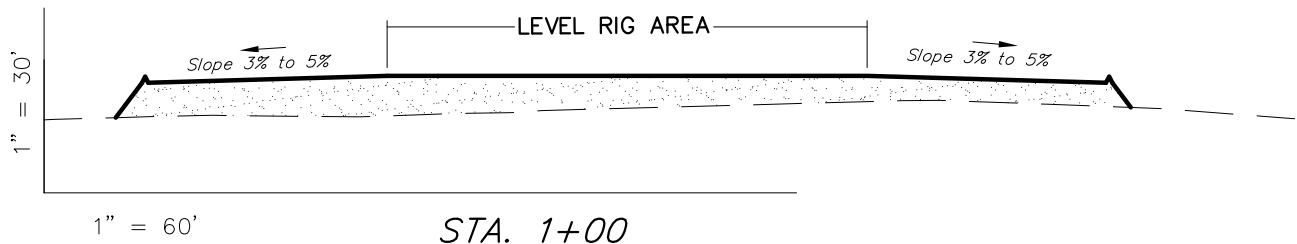
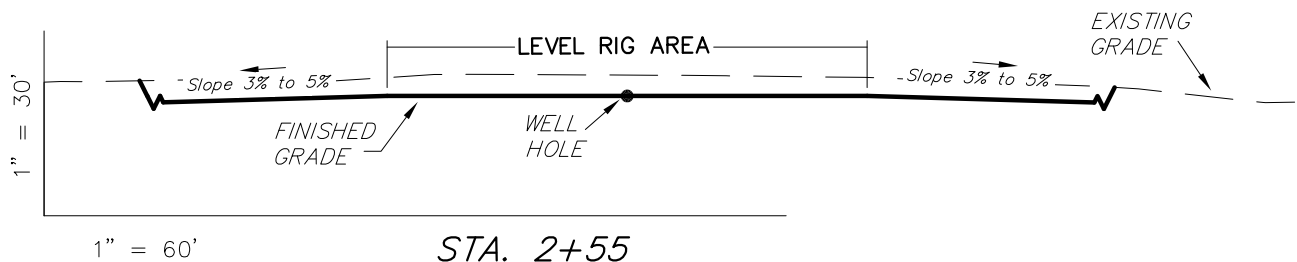
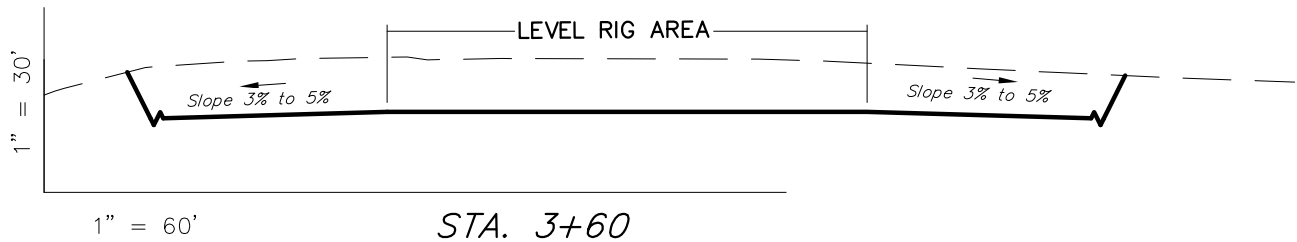
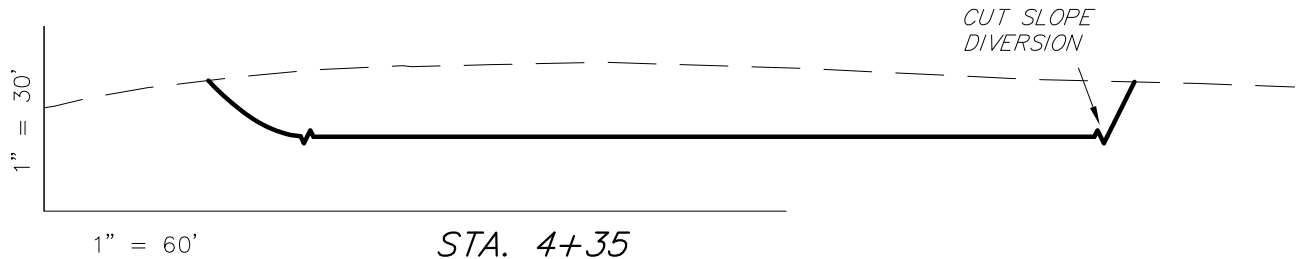
SURVEYED BY:	C.D.S.	DATE SURVEYED:	06-25-10
DRAWN BY:	F.T.M.	DATE DRAWN:	06-28-10
SCALE:	1" = 60'	REVISED:	

Tri State  
Land Surveying, Inc.  
180 NORTH VERNAL AVE. VERNAL, UTAH 84078

(435) 781-2501

SHEET  
4  
OF 11

**ENCANA OIL & GAS (USA) INC**  
**CONSTRUCTION LAYOUT DRAWING**  
**CROSS SECTIONS**  
**WELL PAD (C160U)**



NOTE:  
 UNLESS OTHERWISE NOTED  
 CUT SLOPES ARE AT 1:1  
 FILL SLOPES ARE AT 1.5:1

**ESTIMATED EARTHWORK QUANTITIES**  
 (No Shrink or swell adjustments have been used)  
 (Expressed in Cubic Yards)

ITEM	CUT	FILL	EXCESS	6" TOPSOIL
PAD	13,460	13,450	10	Topsoil is not included in Pad Cut
TOTALS	13,460	13,450	10	2,630

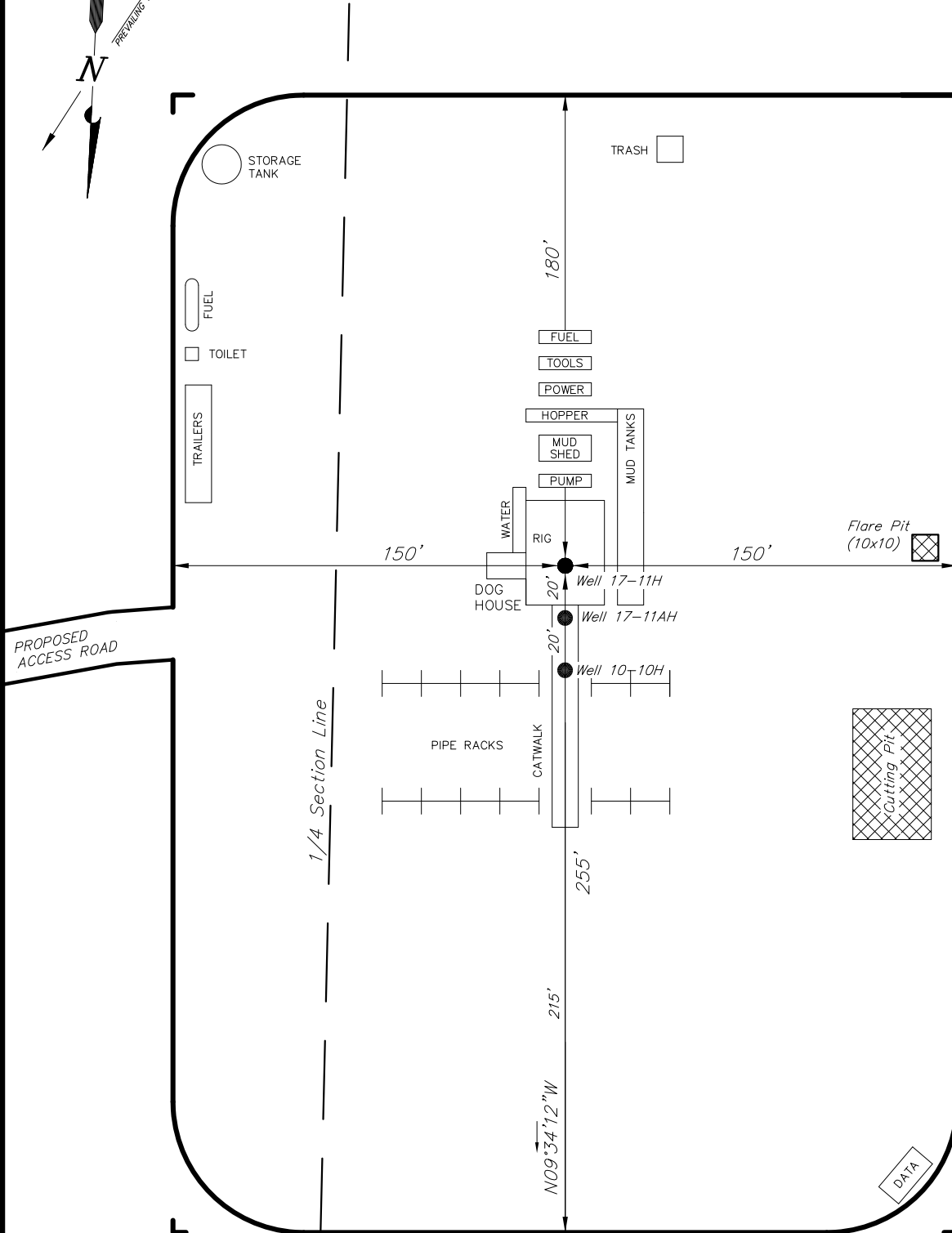
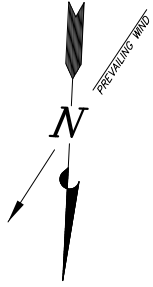
SURVEYED BY: C.D.S. DATE SURVEYED: 06-25-10  
 DRAWN BY: F.T.M. DATE DRAWN: 06-28-10  
 SCALE: 1" = 60' REVISED:

**Tri State**  
 Land Surveying, Inc.  
 180 NORTH VERNAL AVE. VERNAL, UTAH 84078  
 (435) 781-2501

**SHEET**  
**5**  
**OF 11**

# ENCANA OIL & GAS (USA) INC

## TYPICAL RIG LAYOUT WELL PAD (C160U)



Note:  
Flare pit is to be located at least 100' from well head.

SURVEYED BY: C.D.S.	DATE SURVEYED: 06-25-10
DRAWN BY: F.T.M.	DATE DRAWN: 06-28-10
SCALE: 1" = 60'	REVISED:

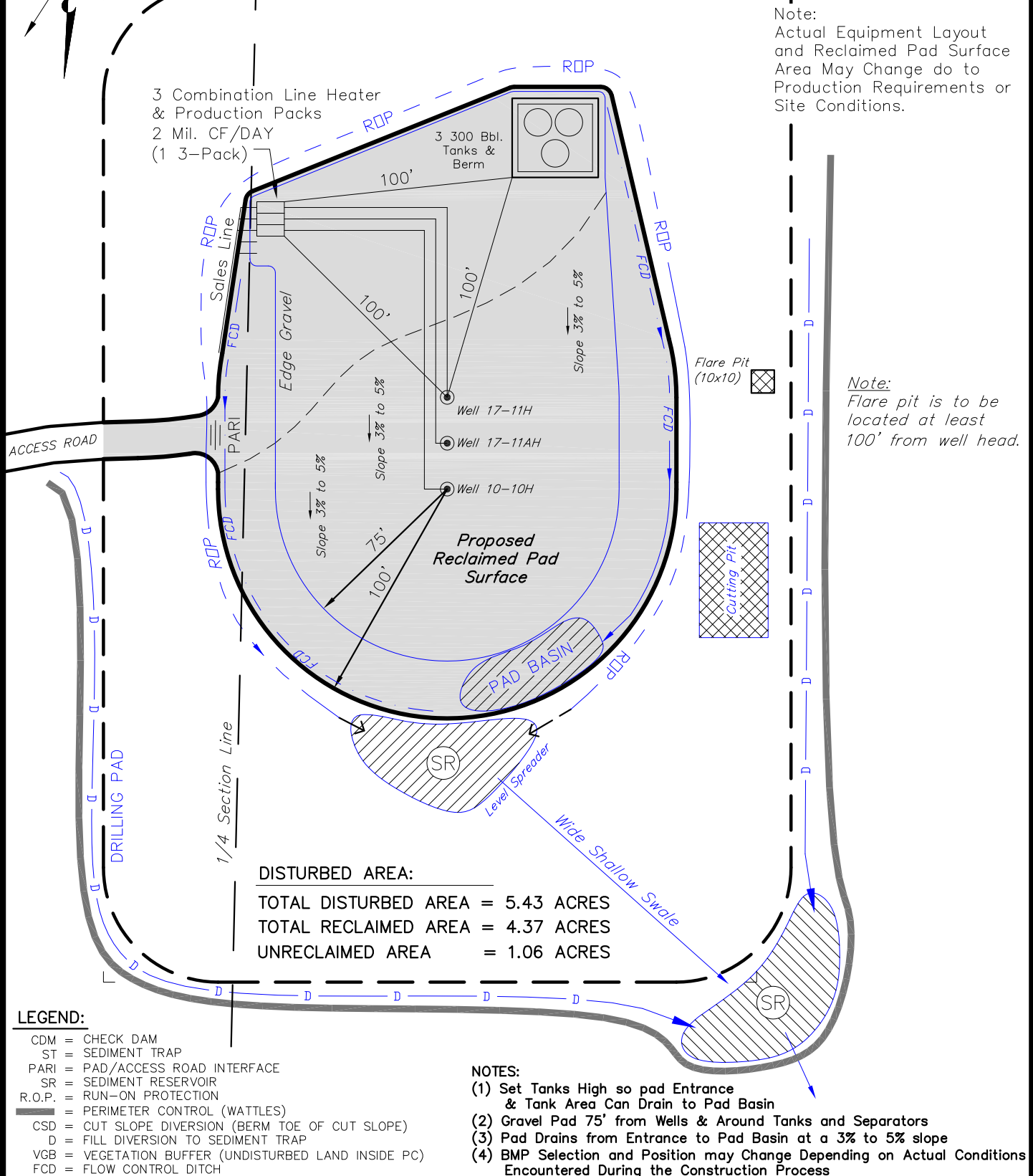
**Tri State**  
Land Surveying, Inc.  
(435) 781-2501  
180 NORTH VERNAL AVE. VERNAL, UTAH 84078

SHEET  
**6**  
OF 11

# ENCANA OIL & GAS (USA) INC

## PRODUCTION SCHEMATIC & RECLAMATION

### WELL PAD (C160U)



SURVEYED BY: C.D.S.	DATE SURVEYED: 06-25-10
DRAWN BY: F.T.M.	DATE DRAWN: 06-28-10
SCALE: 1" = 60'	REVISED:

**Tri State**  
 Land Surveying, Inc.  
 180 NORTH VERNAL AVE. VERNAL, UTAH 84078  
 (435) 781-2501

**SHEET**  
**7**  
**OF 11**

# ENCANA OIL & GAS (USA) INC

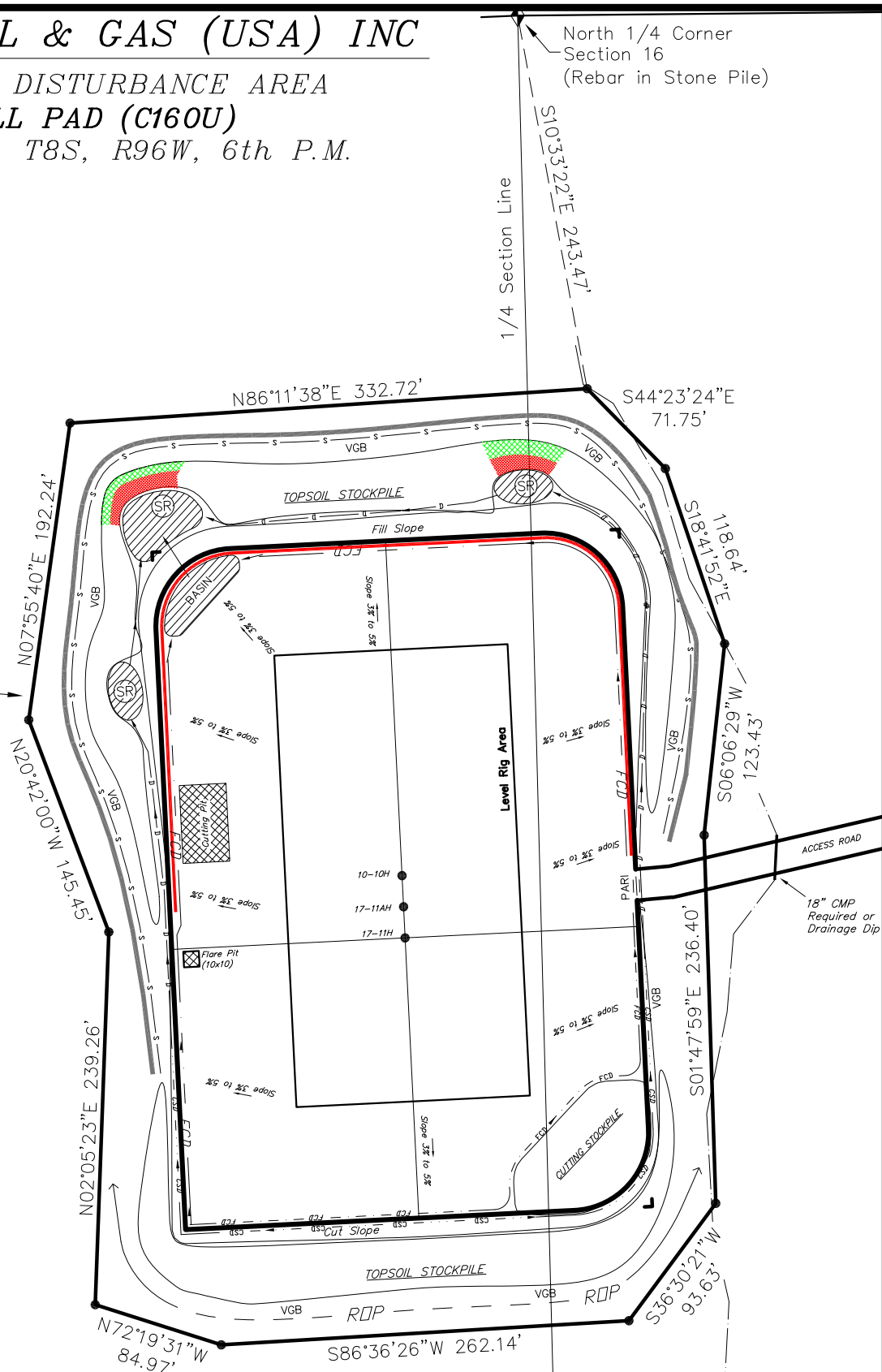
## SURFACE DISTURBANCE AREA

### WELL PAD (C160U)

Section 16, T8S, R96W, 6th P.M.



Boundary of  
Proposed Surface  
Disturbance



#### BASIS OF BEARINGS NOTE:

Basis of Bearings is the East line of the NE 1/4 of Section 16, T8S, R96W, 6th P.M. which is taken from Global Positioning Satellite observations to bear N00°20'56"W a measured distance of 2668.01'.

Area of Proposed  
Surface Disturbance  
is 5.43 Acres

SURVEYED BY: C.D.S.	DATE SURVEYED: 06-25-10
DRAWN BY: F.T.M.	DATE DRAWN: 06-28-10
SCALE: 1" = 100'	REVISED:

**Tri State**  
Land Surveying, Inc.  
180 NORTH VERNAL AVE. VERNAL, UTAH 84078  
(435) 781-2501

SHEET  
8  
OF 11