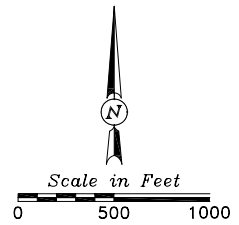
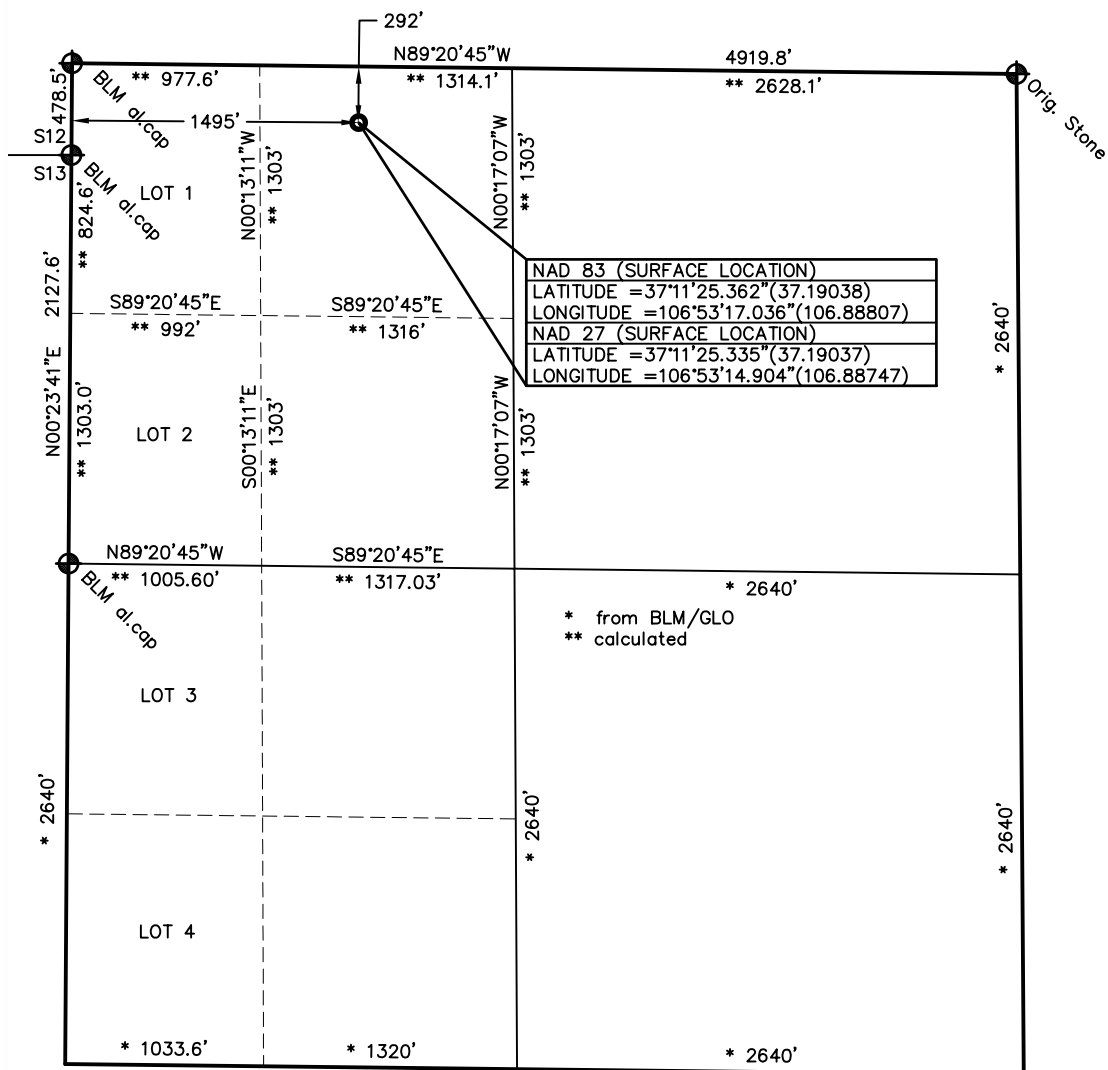


Well Location Plat



Standard monument

Bearings from GPS
true north

Lat/Lon from GPS observations
PDOP: 1.5

Nearest public road: 59'

Land use: Natl Forest Rangeland

Distances/dimensions are
perpendicular to section lines

Inst. operator: T. Barbee

V. F. Neuhaus Properties Blue Creek Federal 18-1

292' FNL & 1495' FWL (surface location)
NE/4, NW/4, Section 18, T34N, R1E, NMPM
Archuleta County, Colorado
7601.9' ground. el. (NAVD88)

Date of Survey: 5/19/10
Date of Plat: 5/31/10



KNOW ALL MEN BY THESE PRESENTS that I, GERALD G. HUDDLESTON, do hereby certify that this plat was prepared from field notes of an actual survey made by me or under my supervision and that the same is true and accurate to the best of my knowledge and belief.

ANDERSON
ENGINEERING COMPANY, INC.
(801) 972-6222
www.andersoneng.com