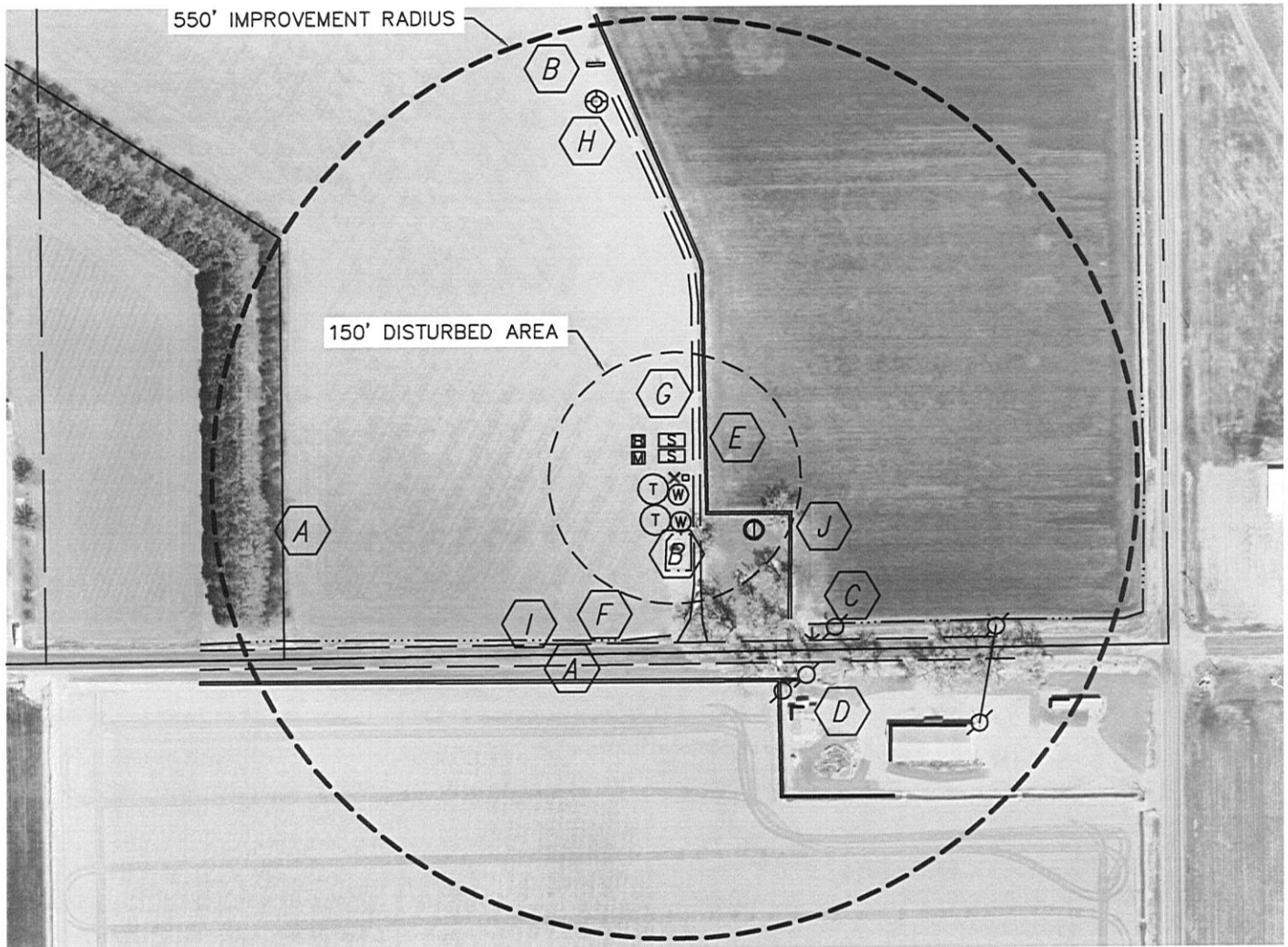


PRODUCTION FACILITY VISIBLE IMPROVEMENTS

SECTION: 26
TOWNSHIP: 6N
RANGE: 65W



IMPROVEMENTS:

REFERENCE POINT LOCATION:

LATITUDE: 40.45026°N
LONGITUDE: 104.62284°W
PDOP: 1.9

1/41/4: SE1/4SE1/4

FSL: 208'

FEL: 583'

DISTANCE TO WELL: 1347'

ASSOCIATED NEW WELLS:

LYSTER E26-23, E26-22D

ASSOCIATED EXISTING WELLS:

LYSTER 26-10, 26-15

4-26EG AND 9-26EG

- A** PROPERTY LINE 208' S, 466' W
- B** PRODUCTION EQUIPMENT 9' E, 67' S, 500' N
- C** OVERHEAD UTILITY LINE 261' SE
- D** BUILDINGS 307' SE, 392' SE, 520' SE
- E** CONCRETE DITCH 36' E, 241' S
- F** DIRT DITCH 188' S
- G** FIELD ROAD 26' E
- H** EX. LYSTER 4-26EG 459' NW
- I** COUNTY ROAD 64 196' S
- J** WATER WELL 113' SE

LEGEND

X	REFERENCE POINT
T	PROPOSED TANK
W	PROPOSED WATER VAULT
S	PROPOSED SEPARATOR
B	PROPOSED BURNER
M	PROPOSED METER

ALL DISTANCES ARE APPROXIMATE.

