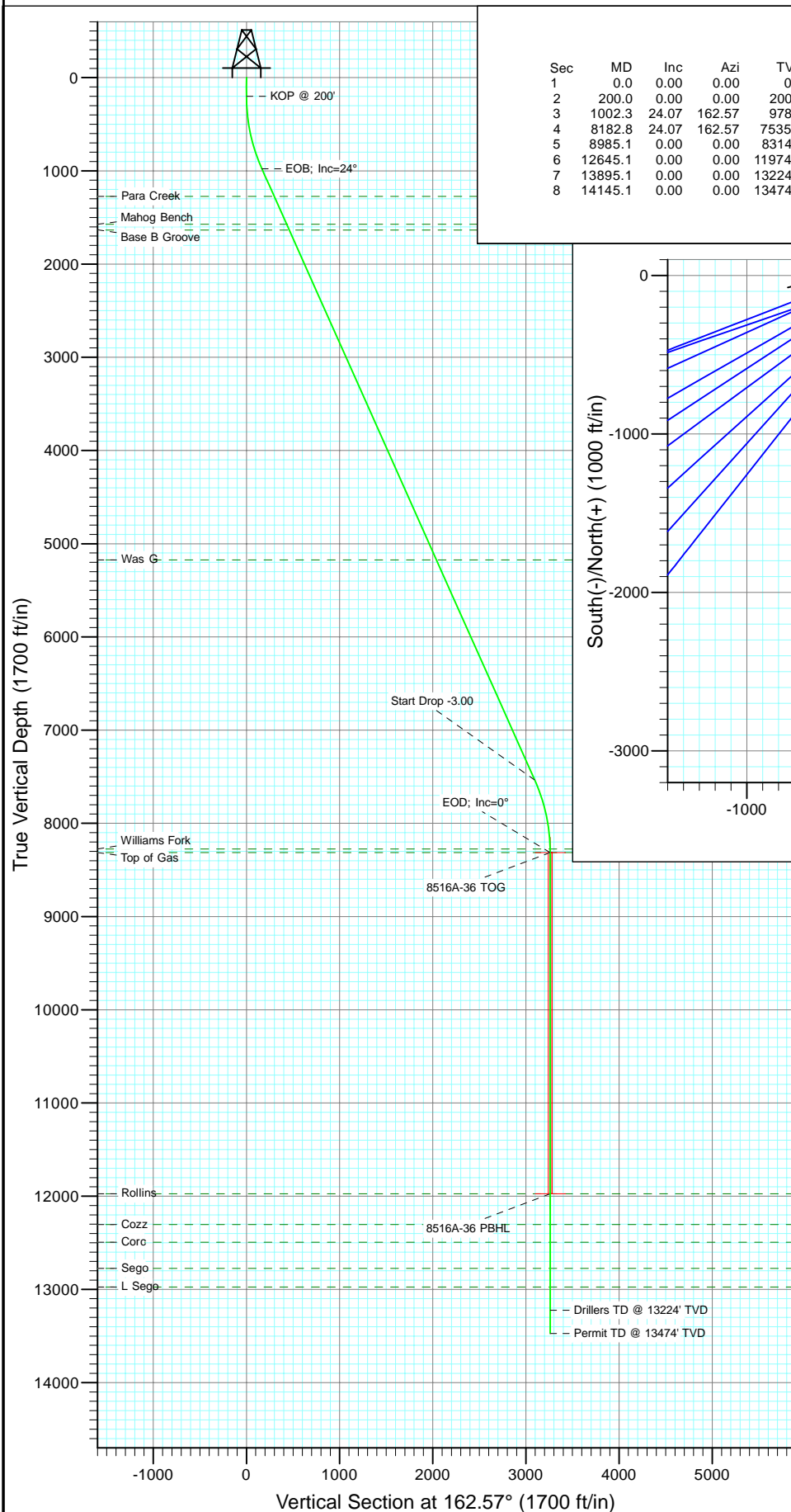


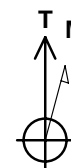
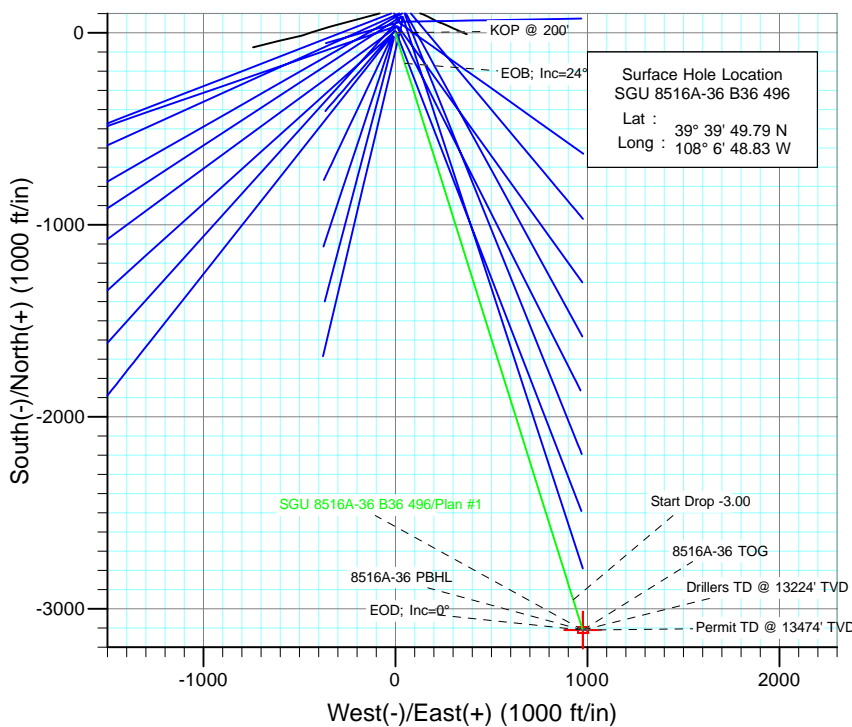


Project: Story Gulch  
Site: S36-T4S-R96W (B36 496)  
Well: SGU 8516A-36 B36 496  
Wellbore: DD  
Design: Plan #1



#### SECTION DETAILS

Sec	MD	Inc	Azi	TVD	+N/-S	+E/-W	Dleg	TFace	VSect	Target
1	0.0	0.00	0.00	0.0	0.0	0.0	0.00	0.00	0.0	
2	200.0	0.00	0.00	200.0	0.0	0.0	0.00	0.00	0.0	
3	1002.3	24.07	162.57	978.9	-158.4	49.7	3.00	162.57	166.0	
4	8182.8	24.07	162.57	7535.1	-2952.5	926.7	0.00	0.00	3094.5	
5	8985.1	0.00	0.00	8314.0	-3110.9	976.4	3.00	180.00	3260.5	8516A-36 TOG
6	12645.1	0.00	0.00	11974.0	-3110.9	976.4	0.00	0.00	3260.5	8516A-36 PBHL
7	13895.1	0.00	0.00	13224.0	-3110.9	976.4	0.00	0.00	3260.5	
8	14145.1	0.00	0.00	13474.0	-3110.9	976.4	0.00	0.00	3260.5	



Azimuths to True North  
Magnetic North: 10.55°

Magnetic Field  
Strength: 52448.2nT  
Dip Angle: 65.90°  
Date: 5/6/2010  
Model: IGRF200510

#### FORMATION TOP DETAILS

TVDPath	MDPath	Formation
1274.0	1325.5	Para Creek
1574.0	1654.1	Mahog Bench
1634.0	1719.8	Base B Groove
5174.0	5596.9	Was G
8274.0	8945.1	Williams Fork
8314.0	8985.1	Top of Gas
11974.0	12645.1	Rollins
12304.0	12975.1	Cozz
12494.0	13165.1	Corc
12774.0	13445.1	Sego
12974.0	13645.1	L Sego

Plan #1  
SGU 8516A-36 B36 496

WELL @ 8374.0ft (Original Well Elev)  
North American Datum 1983  
Well SGU 8516A-36 B36 496, True North

Type	Target	Azimuth	Origin	Type	N/S	E/W	From
TD	No Target (Freehand)	162.57	Slot		0.0	0.0	TVD
Name		TVD	+N/-S	+E/-W	Latitude		Longitude

8516A-36 PBHL 11974.0 -3110.9 976.439° 39' 19.04 N 108° 6' 36.35 W

# Cathedral Energy Services

## Planning Report

<b>Database:</b>	EDM 5000.1 US Multi Users DB	<b>Local Co-ordinate Reference:</b>	Well SGU 8516A-36 B36 496
<b>Company:</b>	EnCana Oil & Gas (USA) Inc	<b>TVD Reference:</b>	WELL @ 8374.0ft (Original Well Elev)
<b>Project:</b>	Story Gulch	<b>MD Reference:</b>	WELL @ 8374.0ft (Original Well Elev)
<b>Site:</b>	S36-T4S-R96W (B36 496)	<b>North Reference:</b>	True
<b>Well:</b>	SGU 8516A-36 B36 496	<b>Survey Calculation Method:</b>	Minimum Curvature
<b>Wellbore:</b>	DD		
<b>Design:</b>	Plan #1		

<b>Project</b>	Story Gulch		
<b>Map System:</b>	US State Plane 1983	<b>System Datum:</b>	Mean Sea Level
<b>Geo Datum:</b>	North American Datum 1983		
<b>Map Zone:</b>	Colorado Central Zone		

Site		S36-T4S-R96W (B36 496)			
Site Position:		Northing:	1,677,422.27 ft	Latitude:	39° 39' 51.36 N
From:	Lat/Long	Easting:	2,264,394.80 ft	Longitude:	108° 6' 47.88 W
Position Uncertainty:	0.0 ft	Slot Radius:	13.200 in	Grid Convergence:	-1.65 °

Well	SGU 8516A-36 B36 496					
Well Position	+N/-S	0.0 ft	Northing:	1,677,265.15 ft	Latitude:	39° 39' 49.79 N
	+E/-W	0.0 ft	Easting:	2,264,315.44 ft	Longitude:	108° 6' 48.83 W
Position Uncertainty		0.0 ft	Wellhead Elevation:	ft	Ground Level:	8,352.0 ft

<b>Wellbore</b>	DD				
<b>Magnetics</b>	<b>Model Name</b>	<b>Sample Date</b>	<b>Declination (°)</b>	<b>Dip Angle (°)</b>	<b>Field Strength (nT)</b>
	IGRF200510	5/6/2010	10.55	65.90	52,448

<b>Design</b>	Plan #1				
<b>Audit Notes:</b>					
<b>Version:</b>	<b>Phase:</b>	PLAN	<b>Tie On Depth:</b>	0.0	
<b>Vertical Section:</b>	<b>Depth From (TVD) (ft)</b>	<b>+N/-S (ft)</b>	<b>+E/-W (ft)</b>	<b>Direction (°)</b>	
	0.0	0.0	0.0	162.57	

<b>Plan Sections</b>										
Measured Depth (ft)	Inclination (°)	Azimuth (°)	Vertical Depth (ft)	+N/-S (ft)	+E/-W (ft)	Dogleg Rate (°/100ft)	Build Rate (°/100ft)	Turn Rate (°/100ft)	TFO (°)	Target
0.0	0.00	0.00	0.0	0.0	0.0	0.00	0.00	0.00	0.00	
200.0	0.00	0.00	200.0	0.0	0.0	0.00	0.00	0.00	0.00	
1,002.3	24.07	162.57	978.9	-158.4	49.7	3.00	3.00	0.00	162.57	
8,182.8	24.07	162.57	7,535.1	-2,952.5	926.7	0.00	0.00	0.00	0.00	
8,985.1	0.00	0.00	8,314.0	-3,110.9	976.4	3.00	-3.00	0.00	180.00	8516A-36 TOG
12,645.1	0.00	0.00	11,974.0	-3,110.9	976.4	0.00	0.00	0.00	0.00	8516A-36 PBHL
13,895.1	0.00	0.00	13,224.0	-3,110.9	976.4	0.00	0.00	0.00	0.00	
14,145.1	0.00	0.00	13,474.0	-3,110.9	976.4	0.00	0.00	0.00	0.00	

# Cathedral Energy Services

## Planning Report

<b>Database:</b>	EDM 5000.1 US Multi Users DB	<b>Local Co-ordinate Reference:</b>	Well SGU 8516A-36 B36 496
<b>Company:</b>	EnCana Oil & Gas (USA) Inc	<b>TVD Reference:</b>	WELL @ 8374.0ft (Original Well Elev)
<b>Project:</b>	Story Gulch	<b>MD Reference:</b>	WELL @ 8374.0ft (Original Well Elev)
<b>Site:</b>	S36-T4S-R96W (B36 496)	<b>North Reference:</b>	True
<b>Well:</b>	SGU 8516A-36 B36 496	<b>Survey Calculation Method:</b>	Minimum Curvature
<b>Wellbore:</b>	DD		
<b>Design:</b>	Plan #1		

### Planned Survey

Measured Depth (ft)	Inclination (°)	Azimuth (°)	Vertical Depth (ft)	+N/-S (ft)	+E/-W (ft)	Vertical Section (ft)	Dogleg Rate (°/100ft)	Build Rate (°/100ft)	Comments / Formations
0.0	0.00	0.00	0.0	0.0	0.0	0.0	0.00	0.00	
30.0	0.00	0.00	30.0	0.0	0.0	0.0	0.00	0.00	
60.0	0.00	0.00	60.0	0.0	0.0	0.0	0.00	0.00	
90.0	0.00	0.00	90.0	0.0	0.0	0.0	0.00	0.00	
120.0	0.00	0.00	120.0	0.0	0.0	0.0	0.00	0.00	
150.0	0.00	0.00	150.0	0.0	0.0	0.0	0.00	0.00	
180.0	0.00	0.00	180.0	0.0	0.0	0.0	0.00	0.00	
200.0	0.00	0.00	200.0	0.0	0.0	0.0	0.00	0.00	KOP @ 200'
210.0	0.30	162.57	210.0	0.0	0.0	0.0	3.00	3.00	
240.0	1.20	162.57	240.0	-0.4	0.1	0.4	3.00	3.00	
270.0	2.10	162.57	270.0	-1.2	0.4	1.3	3.00	3.00	
300.0	3.00	162.57	300.0	-2.5	0.8	2.6	3.00	3.00	
330.0	3.90	162.57	329.9	-4.2	1.3	4.4	3.00	3.00	
360.0	4.80	162.57	359.8	-6.4	2.0	6.7	3.00	3.00	
390.0	5.70	162.57	389.7	-9.0	2.8	9.4	3.00	3.00	
420.0	6.60	162.57	419.5	-12.1	3.8	12.7	3.00	3.00	
450.0	7.50	162.57	449.3	-15.6	4.9	16.3	3.00	3.00	
480.0	8.40	162.57	479.0	-19.5	6.1	20.5	3.00	3.00	
510.0	9.30	162.57	508.6	-24.0	7.5	25.1	3.00	3.00	
540.0	10.20	162.57	538.2	-28.8	9.0	30.2	3.00	3.00	
570.0	11.10	162.57	567.7	-34.1	10.7	35.7	3.00	3.00	
600.0	12.00	162.57	597.1	-39.8	12.5	41.7	3.00	3.00	
630.0	12.90	162.57	626.4	-46.0	14.4	48.2	3.00	3.00	
660.0	13.80	162.57	655.6	-52.6	16.5	55.1	3.00	3.00	
690.0	14.70	162.57	684.6	-59.6	18.7	62.5	3.00	3.00	
720.0	15.60	162.57	713.6	-67.1	21.1	70.4	3.00	3.00	
750.0	16.50	162.57	742.4	-75.0	23.6	78.6	3.00	3.00	
780.0	17.40	162.57	771.1	-83.4	26.2	87.4	3.00	3.00	
810.0	18.30	162.57	799.7	-92.2	28.9	96.6	3.00	3.00	
840.0	19.20	162.57	828.1	-101.4	31.8	106.2	3.00	3.00	
870.0	20.10	162.57	856.3	-111.0	34.8	116.3	3.00	3.00	
900.0	21.00	162.57	884.4	-121.0	38.0	126.9	3.00	3.00	
930.0	21.90	162.57	912.4	-131.5	41.3	137.8	3.00	3.00	
960.0	22.80	162.57	940.1	-142.4	44.7	149.2	3.00	3.00	
990.0	23.70	162.57	967.7	-153.7	48.2	161.1	3.00	3.00	
1,002.3	24.07	162.57	978.9	-158.4	49.7	166.0	3.00	3.00	EOB; Inc=24°
1,020.0	24.07	162.57	995.1	-165.3	51.9	173.3	0.00	0.00	
1,050.0	24.07	162.57	1,022.5	-177.0	55.6	185.5	0.00	0.00	
1,080.0	24.07	162.57	1,049.9	-188.7	59.2	197.7	0.00	0.00	
1,110.0	24.07	162.57	1,077.2	-200.3	62.9	210.0	0.00	0.00	
1,140.0	24.07	162.57	1,104.6	-212.0	66.5	222.2	0.00	0.00	
1,170.0	24.07	162.57	1,132.0	-223.7	70.2	234.4	0.00	0.00	
1,200.0	24.07	162.57	1,159.4	-235.4	73.9	246.7	0.00	0.00	
1,230.0	24.07	162.57	1,186.8	-247.0	77.5	258.9	0.00	0.00	
1,260.0	24.07	162.57	1,214.2	-258.7	81.2	271.2	0.00	0.00	
1,290.0	24.07	162.57	1,241.6	-270.4	84.9	283.4	0.00	0.00	
1,320.0	24.07	162.57	1,269.0	-282.1	88.5	295.6	0.00	0.00	
1,325.5	24.07	162.57	1,274.0	-284.2	89.2	297.9	0.00	0.00	Para Creek
1,350.0	24.07	162.57	1,296.4	-293.7	92.2	307.9	0.00	0.00	
1,380.0	24.07	162.57	1,323.8	-305.4	95.9	320.1	0.00	0.00	
1,410.0	24.07	162.57	1,351.2	-317.1	99.5	332.3	0.00	0.00	
1,440.0	24.07	162.57	1,378.6	-328.7	103.2	344.6	0.00	0.00	

# Cathedral Energy Services

## Planning Report

<b>Database:</b>	EDM 5000.1 US Multi Users DB	<b>Local Co-ordinate Reference:</b>	Well SGU 8516A-36 B36 496
<b>Company:</b>	EnCana Oil & Gas (USA) Inc	<b>TVD Reference:</b>	WELL @ 8374.0ft (Original Well Elev)
<b>Project:</b>	Story Gulch	<b>MD Reference:</b>	WELL @ 8374.0ft (Original Well Elev)
<b>Site:</b>	S36-T4S-R96W (B36 496)	<b>North Reference:</b>	True
<b>Well:</b>	SGU 8516A-36 B36 496	<b>Survey Calculation Method:</b>	Minimum Curvature
<b>Wellbore:</b>	DD		
<b>Design:</b>	Plan #1		

### Planned Survey

Measured Depth (ft)	Inclination (°)	Azimuth (°)	Vertical Depth (ft)	+N/-S (ft)	+E/-W (ft)	Vertical Section (ft)	Dogleg Rate (°/100ft)	Build Rate (°/100ft)	Comments / Formations
1,470.0	24.07	162.57	1,405.9	-340.4	106.8	356.8	0.00	0.00	
1,500.0	24.07	162.57	1,433.3	-352.1	110.5	369.0	0.00	0.00	
1,530.0	24.07	162.57	1,460.7	-363.8	114.2	381.3	0.00	0.00	
1,560.0	24.07	162.57	1,488.1	-375.4	117.8	393.5	0.00	0.00	
1,590.0	24.07	162.57	1,515.5	-387.1	121.5	405.7	0.00	0.00	
1,620.0	24.07	162.57	1,542.9	-398.8	125.2	418.0	0.00	0.00	
1,650.0	24.07	162.57	1,570.3	-410.5	128.8	430.2	0.00	0.00	
1,654.1	24.07	162.57	1,574.0	-412.0	129.3	431.9	0.00	0.00	Mahog Bench
1,680.0	24.07	162.57	1,597.7	-422.1	132.5	442.4	0.00	0.00	
1,710.0	24.07	162.57	1,625.1	-433.8	136.2	454.7	0.00	0.00	
1,719.8	24.07	162.57	1,634.0	-437.6	137.4	458.7	0.00	0.00	Base B Groove
1,740.0	24.07	162.57	1,652.5	-445.5	139.8	466.9	0.00	0.00	
1,770.0	24.07	162.57	1,679.9	-457.2	143.5	479.1	0.00	0.00	
1,800.0	24.07	162.57	1,707.3	-468.8	147.2	491.4	0.00	0.00	
1,830.0	24.07	162.57	1,734.6	-480.5	150.8	503.6	0.00	0.00	
1,860.0	24.07	162.57	1,762.0	-492.2	154.5	515.8	0.00	0.00	
1,890.0	24.07	162.57	1,789.4	-503.8	158.1	528.1	0.00	0.00	
1,920.0	24.07	162.57	1,816.8	-515.5	161.8	540.3	0.00	0.00	
1,950.0	24.07	162.57	1,844.2	-527.2	165.5	552.6	0.00	0.00	
1,980.0	24.07	162.57	1,871.6	-538.9	169.1	564.8	0.00	0.00	
2,010.0	24.07	162.57	1,899.0	-550.5	172.8	577.0	0.00	0.00	
2,040.0	24.07	162.57	1,926.4	-562.2	176.5	589.3	0.00	0.00	
2,070.0	24.07	162.57	1,953.8	-573.9	180.1	601.5	0.00	0.00	
2,100.0	24.07	162.57	1,981.2	-585.6	183.8	613.7	0.00	0.00	
2,130.0	24.07	162.57	2,008.6	-597.2	187.5	626.0	0.00	0.00	
2,160.0	24.07	162.57	2,036.0	-608.9	191.1	638.2	0.00	0.00	
2,190.0	24.07	162.57	2,063.3	-620.6	194.8	650.4	0.00	0.00	
2,220.0	24.07	162.57	2,090.7	-632.3	198.4	662.7	0.00	0.00	
2,250.0	24.07	162.57	2,118.1	-643.9	202.1	674.9	0.00	0.00	
2,280.0	24.07	162.57	2,145.5	-655.6	205.8	687.1	0.00	0.00	
2,310.0	24.07	162.57	2,172.9	-667.3	209.4	699.4	0.00	0.00	
2,340.0	24.07	162.57	2,200.3	-679.0	213.1	711.6	0.00	0.00	
2,370.0	24.07	162.57	2,227.7	-690.6	216.8	723.8	0.00	0.00	
2,400.0	24.07	162.57	2,255.1	-702.3	220.4	736.1	0.00	0.00	
2,430.0	24.07	162.57	2,282.5	-714.0	224.1	748.3	0.00	0.00	
2,460.0	24.07	162.57	2,309.9	-725.6	227.8	760.5	0.00	0.00	
2,490.0	24.07	162.57	2,337.3	-737.3	231.4	772.8	0.00	0.00	

Targets										
Target Name										
- hit/miss target	Dip Angle (°)	Dip Dir. (°)	TVD (ft)	+N/-S (ft)	+E/-W (ft)	Northing (ft)	Easting (ft)		Latitude	Longitude
- Shape										
8516A-36 TOG	0.00	0.00	8,314.0	-3,110.9	976.4	1,674,127.46	2,265,201.96		39° 39' 19.04 N	108° 6' 36.35 W
- plan misses target center by 6473.8ft at 2490.0ft MD (2337.3 TVD, -737.3 N, 231.4 E)										
- Point										
8516A-36 PBHL	0.00	0.00	11,974.0	-3,110.9	976.4	1,674,127.46	2,265,201.96		39° 39' 19.04 N	108° 6' 36.35 W
- plan misses target center by 9952.7ft at 2490.0ft MD (2337.3 TVD, -737.3 N, 231.4 E)										
- Rectangle (sides W30.0 H50.0 D0.0)										

# Cathedral Energy Services

## Planning Report

<b>Database:</b>	EDM 5000.1 US Multi Users DB	<b>Local Co-ordinate Reference:</b>	Well SGU 8516A-36 B36 496
<b>Company:</b>	EnCana Oil & Gas (USA) Inc	<b>TVD Reference:</b>	WELL @ 8374.0ft (Original Well Elev)
<b>Project:</b>	Story Gulch	<b>MD Reference:</b>	WELL @ 8374.0ft (Original Well Elev)
<b>Site:</b>	S36-T4S-R96W (B36 496)	<b>North Reference:</b>	True
<b>Well:</b>	SGU 8516A-36 B36 496	<b>Survey Calculation Method:</b>	Minimum Curvature
<b>Wellbore:</b>	DD		
<b>Design:</b>	Plan #1		

### Planned Survey

Measured Depth (ft)	Inclination (°)	Azimuth (°)	Vertical Depth (ft)	+N/-S (ft)	+E/-W (ft)	Vertical Section (ft)	Dogleg Rate (°/100ft)	Build Rate (°/100ft)	Comments / Formations
2,500.0	24.07	162.57	2,346.4	-741.2	232.6	776.9	0.00	0.00	
2,600.0	24.07	162.57	2,437.7	-780.1	244.9	817.6	0.00	0.00	
2,700.0	24.07	162.57	2,529.0	-819.0	257.1	858.4	0.00	0.00	
2,800.0	24.07	162.57	2,620.3	-857.9	269.3	899.2	0.00	0.00	
2,900.0	24.07	162.57	2,711.6	-896.9	281.5	940.0	0.00	0.00	
3,000.0	24.07	162.57	2,802.9	-935.8	293.7	980.8	0.00	0.00	
3,100.0	24.07	162.57	2,894.2	-974.7	305.9	1,021.6	0.00	0.00	
3,200.0	24.07	162.57	2,985.5	-1,013.6	318.1	1,062.3	0.00	0.00	
3,300.0	24.07	162.57	3,076.8	-1,052.5	330.3	1,103.1	0.00	0.00	
3,400.0	24.07	162.57	3,168.1	-1,091.4	342.6	1,143.9	0.00	0.00	
3,500.0	24.07	162.57	3,259.5	-1,130.3	354.8	1,184.7	0.00	0.00	
3,600.0	24.07	162.57	3,350.8	-1,169.2	367.0	1,225.5	0.00	0.00	
3,700.0	24.07	162.57	3,442.1	-1,208.1	379.2	1,266.3	0.00	0.00	
3,800.0	24.07	162.57	3,533.4	-1,247.1	391.4	1,307.0	0.00	0.00	
3,900.0	24.07	162.57	3,624.7	-1,286.0	403.6	1,347.8	0.00	0.00	
4,000.0	24.07	162.57	3,716.0	-1,324.9	415.8	1,388.6	0.00	0.00	
4,100.0	24.07	162.57	3,807.3	-1,363.8	428.1	1,429.4	0.00	0.00	
4,200.0	24.07	162.57	3,898.6	-1,402.7	440.3	1,470.2	0.00	0.00	
4,300.0	24.07	162.57	3,989.9	-1,441.6	452.5	1,511.0	0.00	0.00	
4,400.0	24.07	162.57	4,081.2	-1,480.5	464.7	1,551.7	0.00	0.00	
4,500.0	24.07	162.57	4,172.5	-1,519.4	476.9	1,592.5	0.00	0.00	
4,600.0	24.07	162.57	4,263.8	-1,558.4	489.1	1,633.3	0.00	0.00	
4,700.0	24.07	162.57	4,355.1	-1,597.3	501.3	1,674.1	0.00	0.00	
4,800.0	24.07	162.57	4,446.4	-1,636.2	513.5	1,714.9	0.00	0.00	
4,900.0	24.07	162.57	4,537.7	-1,675.1	525.8	1,755.7	0.00	0.00	
5,000.0	24.07	162.57	4,629.0	-1,714.0	538.0	1,796.4	0.00	0.00	
5,100.0	24.07	162.57	4,720.3	-1,752.9	550.2	1,837.2	0.00	0.00	
5,200.0	24.07	162.57	4,811.7	-1,791.8	562.4	1,878.0	0.00	0.00	
5,300.0	24.07	162.57	4,903.0	-1,830.7	574.6	1,918.8	0.00	0.00	
5,400.0	24.07	162.57	4,994.3	-1,869.6	586.8	1,959.6	0.00	0.00	
5,500.0	24.07	162.57	5,085.6	-1,908.6	599.0	2,000.4	0.00	0.00	
5,596.9	24.07	162.57	5,174.0	-1,946.2	610.9	2,039.9	0.00	0.00	Was G
5,600.0	24.07	162.57	5,176.9	-1,947.5	611.2	2,041.1	0.00	0.00	
5,700.0	24.07	162.57	5,268.2	-1,986.4	623.5	2,081.9	0.00	0.00	
5,800.0	24.07	162.57	5,359.5	-2,025.3	635.7	2,122.7	0.00	0.00	
5,900.0	24.07	162.57	5,450.8	-2,064.2	647.9	2,163.5	0.00	0.00	
6,000.0	24.07	162.57	5,542.1	-2,103.1	660.1	2,204.3	0.00	0.00	
6,100.0	24.07	162.57	5,633.4	-2,142.0	672.3	2,245.1	0.00	0.00	
6,200.0	24.07	162.57	5,724.7	-2,180.9	684.5	2,285.8	0.00	0.00	
6,300.0	24.07	162.57	5,816.0	-2,219.8	696.7	2,326.6	0.00	0.00	
6,400.0	24.07	162.57	5,907.3	-2,258.8	709.0	2,367.4	0.00	0.00	
6,500.0	24.07	162.57	5,998.6	-2,297.7	721.2	2,408.2	0.00	0.00	
6,600.0	24.07	162.57	6,089.9	-2,336.6	733.4	2,449.0	0.00	0.00	
6,700.0	24.07	162.57	6,181.2	-2,375.5	745.6	2,489.8	0.00	0.00	
6,800.0	24.07	162.57	6,272.5	-2,414.4	757.8	2,530.5	0.00	0.00	
6,900.0	24.07	162.57	6,363.8	-2,453.3	770.0	2,571.3	0.00	0.00	
7,000.0	24.07	162.57	6,455.2	-2,492.2	782.2	2,612.1	0.00	0.00	
7,100.0	24.07	162.57	6,546.5	-2,531.1	794.4	2,652.9	0.00	0.00	
7,200.0	24.07	162.57	6,637.8	-2,570.1	806.7	2,693.7	0.00	0.00	
7,300.0	24.07	162.57	6,729.1	-2,609.0	818.9	2,734.5	0.00	0.00	
7,400.0	24.07	162.57	6,820.4	-2,647.9	831.1	2,775.2	0.00	0.00	
7,500.0	24.07	162.57	6,911.7	-2,686.8	843.3	2,816.0	0.00	0.00	

# Cathedral Energy Services

## Planning Report

<b>Database:</b>	EDM 5000.1 US Multi Users DB	<b>Local Co-ordinate Reference:</b>	Well SGU 8516A-36 B36 496
<b>Company:</b>	EnCana Oil & Gas (USA) Inc	<b>TVD Reference:</b>	WELL @ 8374.0ft (Original Well Elev)
<b>Project:</b>	Story Gulch	<b>MD Reference:</b>	WELL @ 8374.0ft (Original Well Elev)
<b>Site:</b>	S36-T4S-R96W (B36 496)	<b>North Reference:</b>	True
<b>Well:</b>	SGU 8516A-36 B36 496	<b>Survey Calculation Method:</b>	Minimum Curvature
<b>Wellbore:</b>	DD		
<b>Design:</b>	Plan #1		

Planned Survey									
Measured Depth (ft)	Inclination (°)	Azimuth (°)	Vertical Depth (ft)	+N/-S (ft)	+E/-W (ft)	Vertical Section (ft)	Dogleg Rate (°/100ft)	Build Rate (°/100ft)	Comments / Formations
7,600.0	24.07	162.57	7,003.0	-2,725.7	855.5	2,856.8	0.00	0.00	
7,700.0	24.07	162.57	7,094.3	-2,764.6	867.7	2,897.6	0.00	0.00	
7,800.0	24.07	162.57	7,185.6	-2,803.5	879.9	2,938.4	0.00	0.00	
7,900.0	24.07	162.57	7,276.9	-2,842.4	892.1	2,979.2	0.00	0.00	
8,000.0	24.07	162.57	7,368.2	-2,881.3	904.4	3,019.9	0.00	0.00	
8,100.0	24.07	162.57	7,459.5	-2,920.3	916.6	3,060.7	0.00	0.00	
8,182.8	24.07	162.57	7,535.1	-2,952.5	926.7	3,094.5	0.00	0.00	Start Drop -3.00
8,200.0	23.55	162.57	7,550.9	-2,959.1	928.8	3,101.4	3.00	-3.00	
8,300.0	20.55	162.57	7,643.5	-2,994.9	940.0	3,139.0	3.00	-3.00	
8,400.0	17.55	162.57	7,738.0	-3,026.1	949.8	3,171.6	3.00	-3.00	
8,500.0	14.55	162.57	7,834.1	-3,052.4	958.1	3,199.3	3.00	-3.00	
8,600.0	11.55	162.57	7,931.5	-3,074.0	964.8	3,221.8	3.00	-3.00	
8,700.0	8.55	162.57	8,030.0	-3,090.6	970.0	3,239.3	3.00	-3.00	
8,800.0	5.55	162.57	8,129.2	-3,102.3	973.7	3,251.6	3.00	-3.00	
8,900.0	2.55	162.57	8,229.0	-3,109.1	975.8	3,258.6	3.00	-3.00	
8,945.1	1.20	162.57	8,274.0	-3,110.5	976.3	3,260.1	3.00	-3.00	Williams Fork
8,985.1	0.00	0.00	8,314.0	-3,110.9	976.4	3,260.5	3.00	-3.00	EOD; Inc=0° - Top of Gas - 8516A-36 TOG
9,000.0	0.00	0.00	8,328.9	-3,110.9	976.4	3,260.5	0.00	0.00	
9,100.0	0.00	0.00	8,428.9	-3,110.9	976.4	3,260.5	0.00	0.00	
9,200.0	0.00	0.00	8,528.9	-3,110.9	976.4	3,260.5	0.00	0.00	
9,300.0	0.00	0.00	8,628.9	-3,110.9	976.4	3,260.5	0.00	0.00	
9,400.0	0.00	0.00	8,728.9	-3,110.9	976.4	3,260.5	0.00	0.00	
9,500.0	0.00	0.00	8,828.9	-3,110.9	976.4	3,260.5	0.00	0.00	
9,600.0	0.00	0.00	8,928.9	-3,110.9	976.4	3,260.5	0.00	0.00	
9,700.0	0.00	0.00	9,028.9	-3,110.9	976.4	3,260.5	0.00	0.00	
9,800.0	0.00	0.00	9,128.9	-3,110.9	976.4	3,260.5	0.00	0.00	
9,900.0	0.00	0.00	9,228.9	-3,110.9	976.4	3,260.5	0.00	0.00	
10,000.0	0.00	0.00	9,328.9	-3,110.9	976.4	3,260.5	0.00	0.00	
10,100.0	0.00	0.00	9,428.9	-3,110.9	976.4	3,260.5	0.00	0.00	
10,200.0	0.00	0.00	9,528.9	-3,110.9	976.4	3,260.5	0.00	0.00	
10,300.0	0.00	0.00	9,628.9	-3,110.9	976.4	3,260.5	0.00	0.00	
10,400.0	0.00	0.00	9,728.9	-3,110.9	976.4	3,260.5	0.00	0.00	
10,500.0	0.00	0.00	9,828.9	-3,110.9	976.4	3,260.5	0.00	0.00	
10,600.0	0.00	0.00	9,928.9	-3,110.9	976.4	3,260.5	0.00	0.00	
10,700.0	0.00	0.00	10,028.9	-3,110.9	976.4	3,260.5	0.00	0.00	
10,800.0	0.00	0.00	10,128.9	-3,110.9	976.4	3,260.5	0.00	0.00	
10,900.0	0.00	0.00	10,228.9	-3,110.9	976.4	3,260.5	0.00	0.00	
11,000.0	0.00	0.00	10,328.9	-3,110.9	976.4	3,260.5	0.00	0.00	
11,100.0	0.00	0.00	10,428.9	-3,110.9	976.4	3,260.5	0.00	0.00	
11,200.0	0.00	0.00	10,528.9	-3,110.9	976.4	3,260.5	0.00	0.00	
11,300.0	0.00	0.00	10,628.9	-3,110.9	976.4	3,260.5	0.00	0.00	
11,400.0	0.00	0.00	10,728.9	-3,110.9	976.4	3,260.5	0.00	0.00	
11,500.0	0.00	0.00	10,828.9	-3,110.9	976.4	3,260.5	0.00	0.00	
11,600.0	0.00	0.00	10,928.9	-3,110.9	976.4	3,260.5	0.00	0.00	
11,700.0	0.00	0.00	11,028.9	-3,110.9	976.4	3,260.5	0.00	0.00	
11,800.0	0.00	0.00	11,128.9	-3,110.9	976.4	3,260.5	0.00	0.00	
11,900.0	0.00	0.00	11,228.9	-3,110.9	976.4	3,260.5	0.00	0.00	
12,000.0	0.00	0.00	11,328.9	-3,110.9	976.4	3,260.5	0.00	0.00	
12,100.0	0.00	0.00	11,428.9	-3,110.9	976.4	3,260.5	0.00	0.00	
12,200.0	0.00	0.00	11,528.9	-3,110.9	976.4	3,260.5	0.00	0.00	
12,300.0	0.00	0.00	11,628.9	-3,110.9	976.4	3,260.5	0.00	0.00	
12,400.0	0.00	0.00	11,728.9	-3,110.9	976.4	3,260.5	0.00	0.00	

# Cathedral Energy Services

## Planning Report

<b>Database:</b>	EDM 5000.1 US Multi Users DB	<b>Local Co-ordinate Reference:</b>	Well SGU 8516A-36 B36 496
<b>Company:</b>	EnCana Oil & Gas (USA) Inc	<b>TVD Reference:</b>	WELL @ 8374.0ft (Original Well Elev)
<b>Project:</b>	Story Gulch	<b>MD Reference:</b>	WELL @ 8374.0ft (Original Well Elev)
<b>Site:</b>	S36-T4S-R96W (B36 496)	<b>North Reference:</b>	True
<b>Well:</b>	SGU 8516A-36 B36 496	<b>Survey Calculation Method:</b>	Minimum Curvature
<b>Wellbore:</b>	DD		
<b>Design:</b>	Plan #1		

Planned Survey									
Measured Depth (ft)	Inclination (°)	Azimuth (°)	Vertical Depth (ft)	+N/-S (ft)	+E/-W (ft)	Vertical Section (ft)	Dogleg Rate (°/100ft)	Build Rate (°/100ft)	Comments / Formations
12,500.0	0.00	0.00	11,828.9	-3,110.9	976.4	3,260.5	0.00	0.00	
12,600.0	0.00	0.00	11,928.9	-3,110.9	976.4	3,260.5	0.00	0.00	
12,645.1	0.00	0.00	11,974.0	-3,110.9	976.4	3,260.5	0.00	0.00	Rollins - 8516A-36 PBHL
12,700.0	0.00	0.00	12,028.9	-3,110.9	976.4	3,260.5	0.00	0.00	
12,800.0	0.00	0.00	12,128.9	-3,110.9	976.4	3,260.5	0.00	0.00	
12,900.0	0.00	0.00	12,228.9	-3,110.9	976.4	3,260.5	0.00	0.00	
12,975.1	0.00	0.00	12,304.0	-3,110.9	976.4	3,260.5	0.00	0.00	Cozz
13,000.0	0.00	0.00	12,328.9	-3,110.9	976.4	3,260.5	0.00	0.00	
13,100.0	0.00	0.00	12,428.9	-3,110.9	976.4	3,260.5	0.00	0.00	
13,165.1	0.00	0.00	12,494.0	-3,110.9	976.4	3,260.5	0.00	0.00	Corc
13,200.0	0.00	0.00	12,528.9	-3,110.9	976.4	3,260.5	0.00	0.00	
13,300.0	0.00	0.00	12,628.9	-3,110.9	976.4	3,260.5	0.00	0.00	
13,400.0	0.00	0.00	12,728.9	-3,110.9	976.4	3,260.5	0.00	0.00	
13,445.1	0.00	0.00	12,774.0	-3,110.9	976.4	3,260.5	0.00	0.00	Sego
13,500.0	0.00	0.00	12,828.9	-3,110.9	976.4	3,260.5	0.00	0.00	
13,600.0	0.00	0.00	12,928.9	-3,110.9	976.4	3,260.5	0.00	0.00	
13,645.1	0.00	0.00	12,974.0	-3,110.9	976.4	3,260.5	0.00	0.00	L Sego
13,700.0	0.00	0.00	13,028.9	-3,110.9	976.4	3,260.5	0.00	0.00	
13,800.0	0.00	0.00	13,128.9	-3,110.9	976.4	3,260.5	0.00	0.00	
13,895.1	0.00	0.00	13,224.0	-3,110.9	976.4	3,260.5	0.00	0.00	Drillers TD @ 13224' TVD
13,900.0	0.00	0.00	13,228.9	-3,110.9	976.4	3,260.5	0.00	0.00	
14,000.0	0.00	0.00	13,328.9	-3,110.9	976.4	3,260.5	0.00	0.00	
14,100.0	0.00	0.00	13,428.9	-3,110.9	976.4	3,260.5	0.00	0.00	
14,145.1	0.00	0.00	13,474.0	-3,110.9	976.4	3,260.5	0.00	0.00	

Targets									
Target Name - hit/miss target - Shape	Dip Angle (°)	Dip Dir. (°)	TVD (ft)	+N/-S (ft)	+E/-W (ft)	Northing (ft)	Easting (ft)	Latitude	Longitude
8516A-36 TOG - plan hits target center - Point	0.00	0.00	8,314.0	-3,110.9	976.4	1,674,127.46	2,265,201.96	39° 39' 19.04 N	108° 6' 36.35 W
8516A-36 PBHL - plan hits target center - Rectangle (sides W30.0 H50.0 D0.0)	0.00	0.00	11,974.0	-3,110.9	976.4	1,674,127.46	2,265,201.96	39° 39' 19.04 N	108° 6' 36.35 W

# Cathedral Energy Services

## Planning Report

<b>Database:</b>	EDM 5000.1 US Multi Users DB	<b>Local Co-ordinate Reference:</b>	Well SGU 8516A-36 B36 496
<b>Company:</b>	EnCana Oil & Gas (USA) Inc	<b>TVD Reference:</b>	WELL @ 8374.0ft (Original Well Elev)
<b>Project:</b>	Story Gulch	<b>MD Reference:</b>	WELL @ 8374.0ft (Original Well Elev)
<b>Site:</b>	S36-T4S-R96W (B36 496)	<b>North Reference:</b>	True
<b>Well:</b>	SGU 8516A-36 B36 496	<b>Survey Calculation Method:</b>	Minimum Curvature
<b>Wellbore:</b>	DD		
<b>Design:</b>	Plan #1		

Formations						
Measured Depth (ft)	Vertical Depth (ft)	Name	Lithology	Dip (°)	Dip Direction (°)	
1,325.5	1,274.0	Para Creek		0.00		
1,654.1	1,574.0	Mahog Bench		0.00		
1,719.8	1,634.0	Base B Groove		0.00		
5,596.9	5,174.0	Was G		0.00		
8,945.1	8,274.0	Williams Fork		0.00		
8,985.1	8,314.0	Top of Gas		0.00		
12,645.1	11,974.0	Rollins		0.00		
12,975.1	12,304.0	Cozz		0.00		
13,165.1	12,494.0	Corc		0.00		
13,445.1	12,774.0	Sego		0.00		
13,645.1	12,974.0	L Sego		0.00		

Plan Annotations					
Measured Depth (ft)	Vertical Depth (ft)	Local Coordinates			
		+N/-S (ft)	+E/-W (ft)	Comment	
200.0	200.0	0.0	0.0	KOP @ 200'	
1,002.3	978.9	-158.4	49.7	EOB; Inc=24°	
8,182.8	7,535.1	-2,952.5	926.7	Start Drop -3.00	
8,985.1	8,314.0	-3,110.9	976.4	EOD; Inc=0°	
13,895.1	13,224.0	-3,110.9	976.4	Drillers TD @ 13224' TVD	
14,145.1	13,474.0	-3,110.9	976.4	Permit TD @ 13474' TVD	