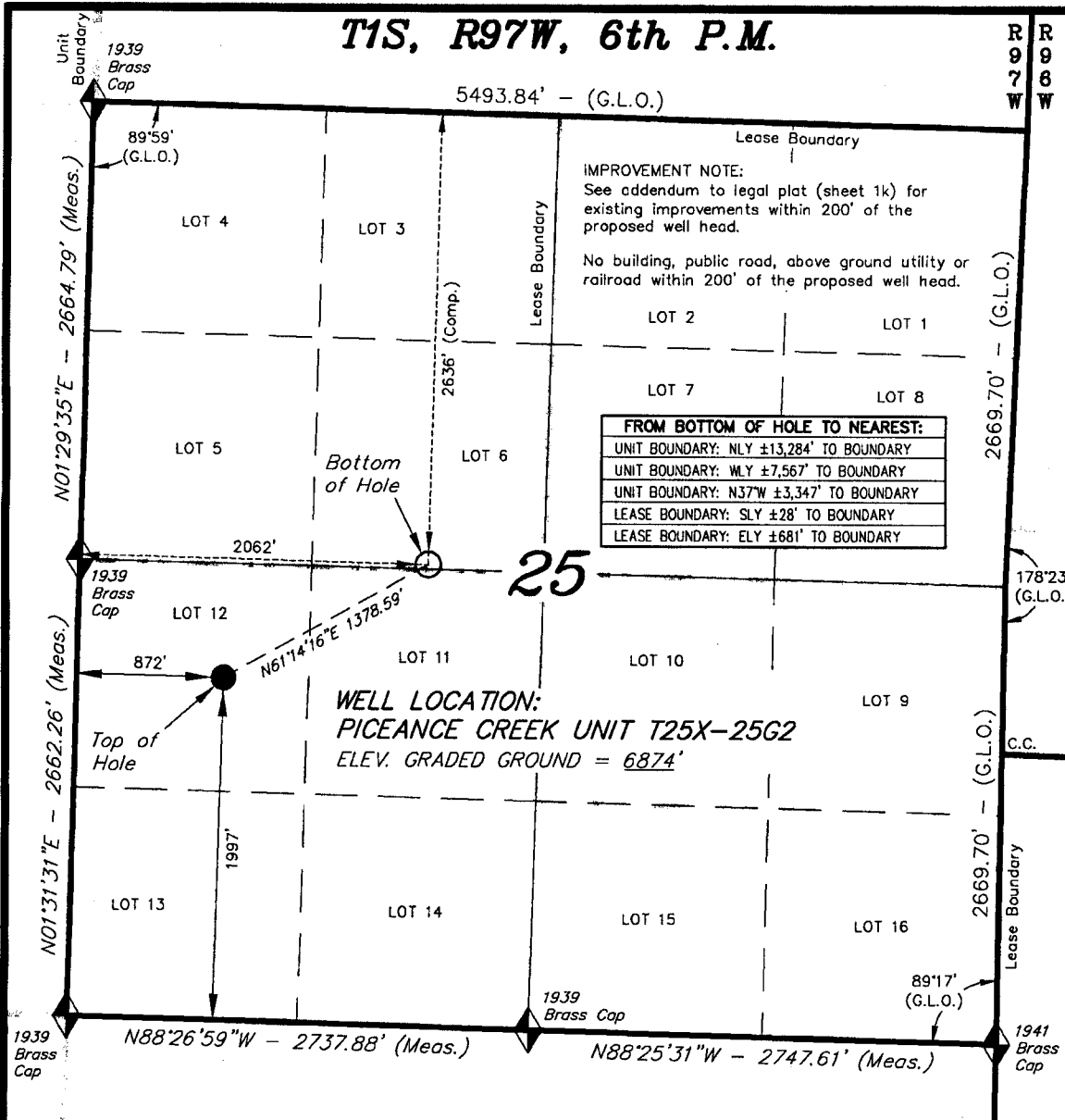
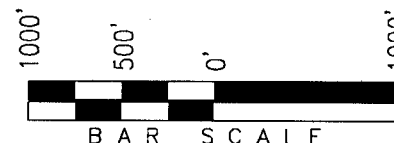


**T1S, R97W, 6th P.M.**



**ExxonMobil Oil Corporation**

WELL LOCATION, PICEANCE CREEK UNIT  
T25X-25G2, LOCATED AS SHOWN IN THE NW  
1/4 SW 1/4 (LOT 12) OF SECTION 25, T1S,  
R97W, 6th P.M., RIO BLANCO COUNTY,  
COLORADO.



◆ = SECTION CORNERS LOCATED

**BASIS OF BEARINGS & BASIS OF ELEVATION**

BASIS OF BEARINGS IS A LINE BETWEEN MAGNOLIA & MEYERS TRIANGULATION STATION GRID COORDINATES WHICH IS ASSUMED TO BEAR S82°36'07"E.

BASIS OF ELEVATIONS IS MAGNOLIA TRIANGULATION STATION LOCATED IN THE NW 1/4 OF SECTION 9, T2S, R96W, 6th P.M. REPORTED FROM THE NATIONAL GEODETIC SURVEY AS BEING 7529 FEET (NAVD 88). WE MEASURED IT TO BE 7526.2'

**NOTES:**

1. Well footages are measured at right angles to the Section Lines.
2. Bearings are based on Global Positioning Satellite observations.
3. G.P.S. Operator: D. PETTY, (PDOP) = 3.4

THIS IS TO CERTIFY THAT THE ABOVE SURVEY WAS PREPARED FROM FIELD NOTES OF ACTUAL SURVEY MADE BY ME, OR UNDER MY SUPERVISION AND THAT THE SAME ARE TRUE AND CORRECT TO THE BEST OF MY KNOWLEDGE AND BELIEF.

REGISTERED LAND SURVEYOR  
REGISTRATION NO. 30125  
STATE OF COLORADO

**TRI STATE LAND SURVEYING & CONSULTING**

180 NORTH VERNAL AVE. - VERNAL, UTAH 84078  
(435) 781-2501

DATE SURVEYED:  
12-13-06

SURVEYED BY: D.P.

DATE DRAWN:  
03-28-07

DRAWN BY: D.COX

REVISED:

SCALE: 1" = 1000'

**SHEET**  
**1b**  
**OF 8**

CO-NORTH NAD 83 (SURFACE LOCATION)	CO-NORTH NAD 83 (BOTTOM HOLE)	FROM SURFACE LOCATION TO NEAREST:
LATITUDE = 39°56'00.93" (39.933592)	LATITUDE = 39°56'07.85" (39.935513)	TOWN/COMMUNITY: NE 18.5 MILES TO MEEKER
LONGITUDE = 108°14'07.71" (108.235476)	LONGITUDE = 108°13'52.47" (108.231242)	UNIT BOUNDARY: NLY ±13,975' TO BOUNDARY
STATE PLANE COORDINATES	STATE PLANE COORDINATES	UNIT BOUNDARY: WLY ±11,876' TO BOUNDARY
N: = 1230486.997 E: = 2233022.108	N: = 1231150.107 E: = 2234230.183	UNIT BOUNDARY: N13°W ±3,443' TO BOUNDARY
CO-NORTH NAD 27 (SURFACE LOCATION)	CO-NORTH NAD 27 (BOTTOM HOLE)	LEASE BOUNDARY: NLY ±666' TO BOUNDARY
LATITUDE = 39°56'01.03" (39.933619)	LATITUDE = 39°56'07.95" (39.935541)	LEASE BOUNDARY: ELY ±1,870' TO BOUNDARY
LONGITUDE = 108°14'05.40" (108.234835)	LONGITUDE = 108°13'50.17" (108.230602)	EXISTING WELL: NELY ±30' TO T25X-25G WELL HEAD
STATE PLANE COORDINATES	STATE PLANE COORDINATES	EXISTING WELL: NWLY ±4,516' TO 23-4 FEDERAL
N: = 230487.894 E: = 1233181.940	N: = 231151.000 E: = 1234390.000	