

T4S, R96W, 6th P.M.

EnCana OIL & GAS (USA) INC.

1953 Brass Cap,  
0.8' High, Mound  
of Stones  
Lat: 39.666042°  
Long: 108.126567°

1953 Brass Cap,  
0.6' High, Steel Post  
Lat: 39.666053°  
Long: 108.117142°

1953 Brass Cap,  
0.4' High, Steel Post  
Lat: 39.666064°  
Long: 108.107683°

Well location, SGU 8506B-36 B36 496, located  
as shown in Lot 2 of Section 36, T4S, R96W,  
6th P.M., Garfield County, Colorado.

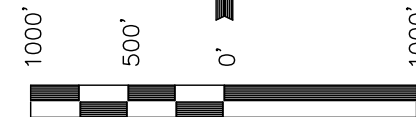
### BASIS OF ELEVATION

BENCH MARK (H79) LOCATED IN THE NE 1/4 OF SECTION  
35, T4S, R98W, 6th P.M. TAKEN FROM THE BULL FORK  
QUADRANGLE, COLORADO, 7.5 MINUTE SERIES (TOPO  
GRAPHICAL MAP) PUBLISHED BY THE UNITED STATES  
DEPARTMENT OF THE INTERIOR, GEOLOGICAL SURVEY. SAID  
ELEVATION IS MARKED AS BEING 8535 FEET.

### BASIS OF BEARINGS

BASIS OF BEARINGS IS A G.P.S. OBSERVATION.

Sheet 1w of 11



SCALE

### CERTIFICATE

THIS IS TO CERTIFY THAT THE ABOVE PLAT WAS PREPARED FROM  
FIELD NOTES OF ACTUAL SURVEYS MADE BY ME OR UNDER MY  
SUPERVISION AND THAT THE SAME ARE TRUE AND CORRECT TO THE  
BEST OF MY KNOWLEDGE AND BELIEF.

REGISTERED LAND SURVEYOR  
REGISTRATION NO. 17492  
STATE OF COLORADO

**UINTAH ENGINEERING & LAND SURVEYING**  
**85 SOUTH 200 EAST - VERNAL, UTAH 84078**  
(435) 789-1017

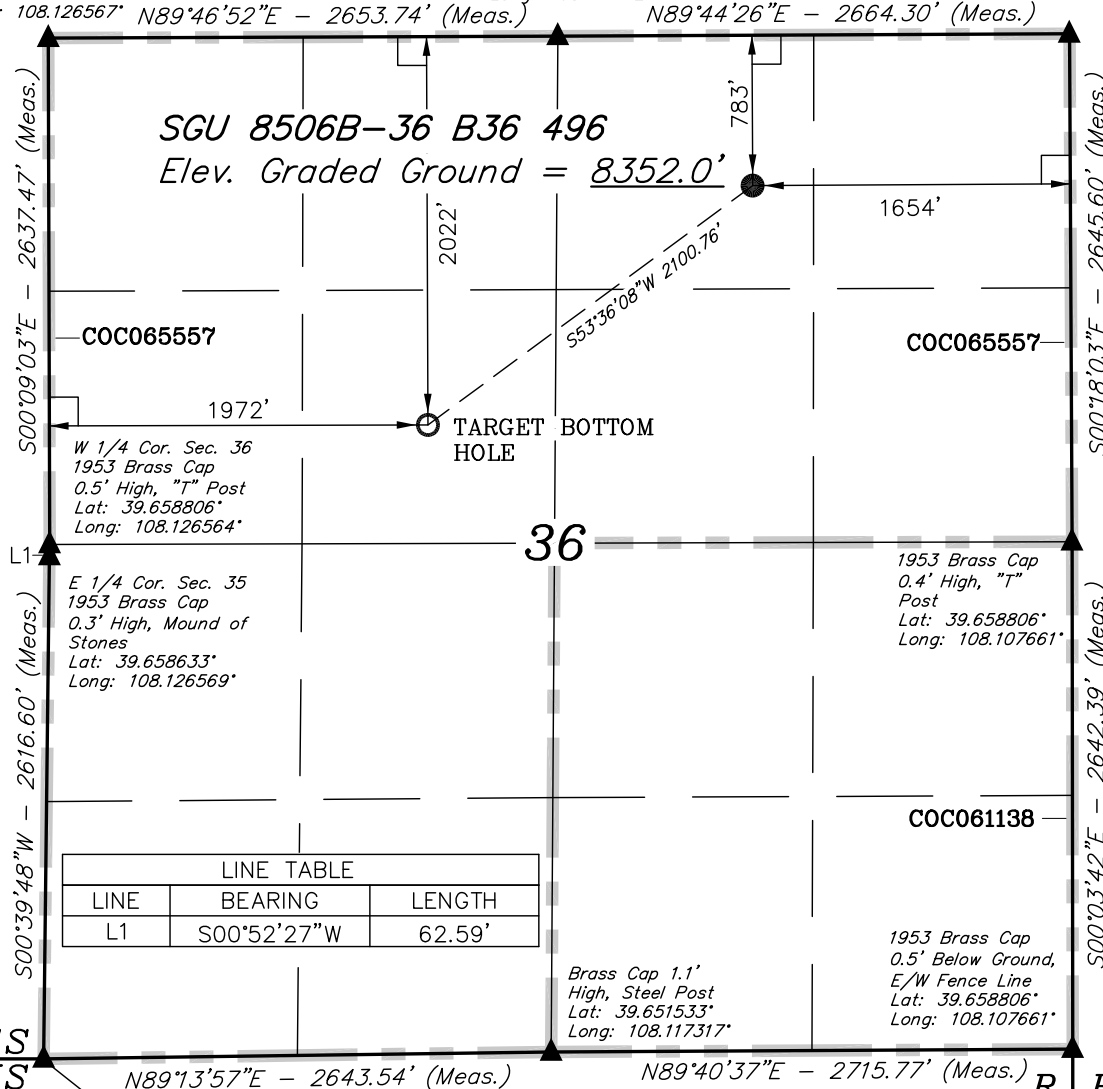
### LEGEND:

- └─┘ = 90° SYMBOL
- = PROPOSED WELL HEAD.
- ▲ = SECTION CORNERS LOCATED.

NAD 83 (TARGET BOTTOM HOLE)	NAD 83 (SURFACE LOCATION)
LATITUDE = 39°39'37.80" (39.660500)	LATITUDE = 39°39'50.07" (39.663908)
LONGITUDE = 108°07'10.43" (108.119564)	LONGITUDE = 108°06'48.77" (108.113547)
NAD 27 (TARGET BOTTOM HOLE)	NAD 27 (SURFACE LOCATION)
LATITUDE = 39°39'37.89" (39.660525)	LATITUDE = 39°39'50.16" (39.663933)
LONGITUDE = 108°07'08.14" (108.118928)	LONGITUDE = 108°06'46.49" (108.112914)

PDOP = 1.8

NOTE:  
SEE ADDENDUM PLAT FOR EXISTING  
IMPROVEMENT WITHIN 400' OF THE  
PROPOSED WELL HEAD.



SGU 8506B-36 B36 496  
Elev. Graded Ground = 8352.0'

COC065557

COC065557

COC061138

LINE TABLE		
LINE	BEARING	LENGTH
L1	S00°52'27"W	62.59'

Brass Cap 1.1'  
High, Steel Post  
Lat: 39.651533°  
Long: 108.117317°

1953 Brass Cap  
0.5' Below Ground,  
E/W Fence Line  
Lat: 39.658806°  
Long: 108.107661°

T4S  
T5S

R  
96  
W

R  
95  
W