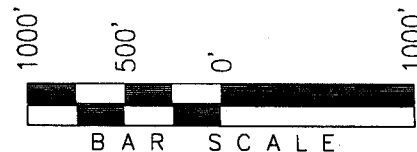



***T1S, R97W, 6th P.M.***

ExxonMobil Oil Corporation

WELL LOCATION, PICEANCE CREEK UNIT  
T25X-25G9, LOCATED AS SHOWN IN THE NW  
1/4 SW 1/4 (LOT 12) OF SECTION 25, T1S,  
R97W, 6th P.M., RIO BLANCO COUNTY,  
COLORADO.



 = SECTION CORNERS LOCATED

### BASIS OF BEARINGS & BASIS OF ELEVATION

BASIS OF BEARINGS IS A LINE BETWEEN MAGNOLIA & MEYERS TRIANGULATION  
STATION GRID COORDINATES WHICH IS ASSUMED TO BEAR S82°36'07"E.

BASIS OF ELEVATIONS IS MAGNOLIA TRIANGULATION STATION LOCATED IN THE NW 1/4 OF SECTION 9, T2S, R96W, 6th P.M. REPORTED FROM THE NATIONAL GEODETIC SURVEY AS BEING 7529 FEET (NAVD 88). WE MEASURED IT TO BE 7526.2'

NOTES:

1. Well footages are measured at right angles to the Section Lines.
2. Bearings are based on Global Positioning Satellite observations.
3. G.P.S. Operator: D. PETTY, (PDOP) = 2.6

THIS IS TO CERTIFY THAT THE ABOVE STATEMENT WAS PREPARED FROM FIELD NOTES OF ACTUAL SURVEY MADE BY ME, OR UNDER MY SUPERVISION AND THAT THE SAME ARE TRUE AND CORRECT TO THE BEST OF MY KNOWLEDGE AND BELIEF.

# 30125

REGISTERED LAND SURVEYOR  
REGISTRATION NO. 1139025  
STATE OF COLORADO

**TRI STATE LAND SURVEYING & CONSULTING**

180 NORTH VERNAL AVE. - VERNAL, UTAH 84078  
(435) 781-2501

DATE SURVEYED:  
12-13-06

SURVEYED BY: D.P.

DATE DRAWN:  
03-28-07

DRAWN BY: D.COX

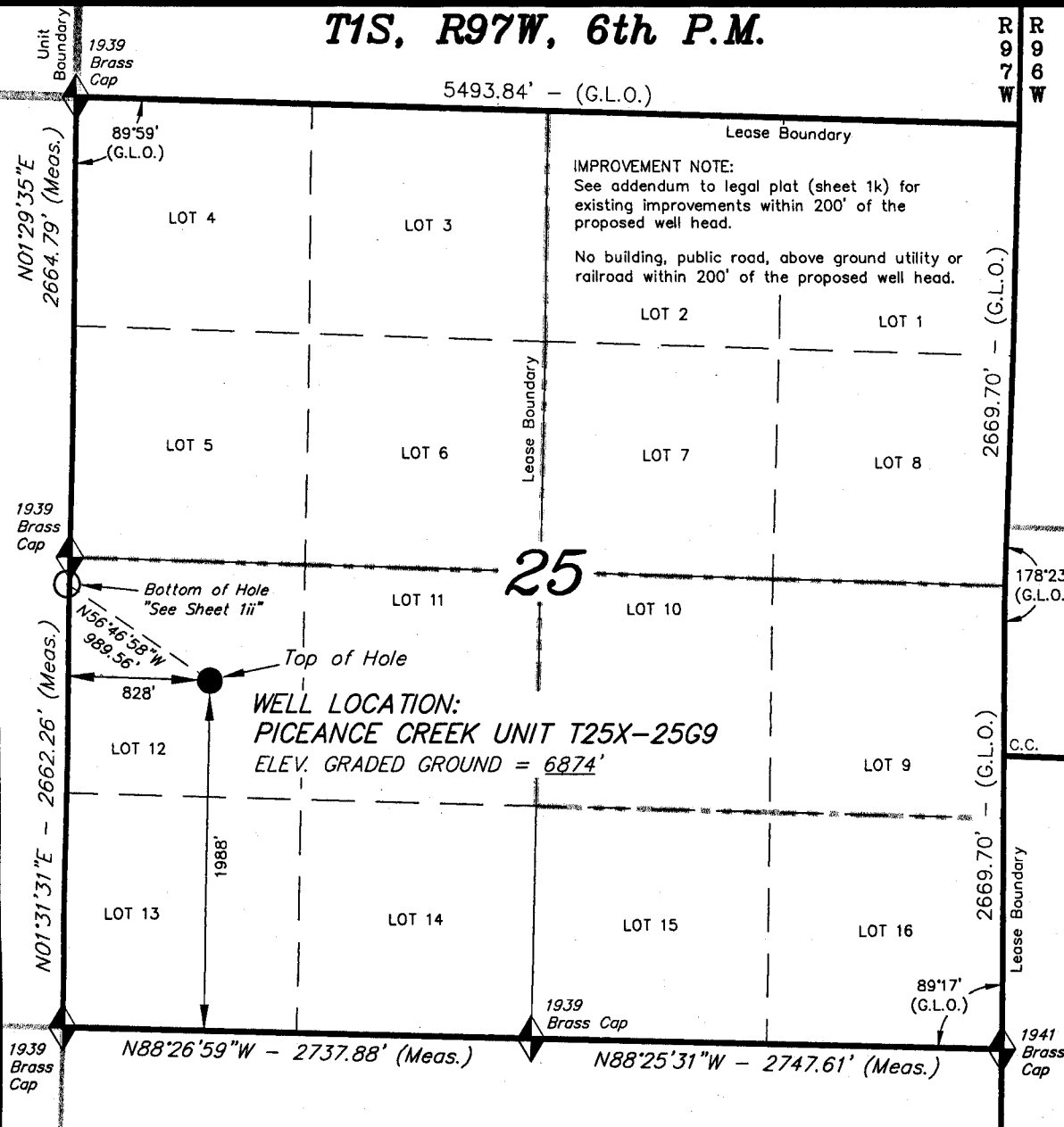
REVISÉ:

SCALE: 1" = 1000'

**SHEET**

1i

OF 8



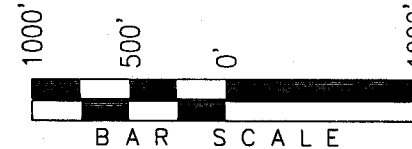
<b>CO-NORTH NAD 83 (SURFACE LOCATION)</b>	
LATITUDE = 39°56'00.84" (39.933566)	
LONGITUDE = 108°14'08.28" (108.235633)	
<b>STATE PLANE COORDINATES</b>	
N: = 1230479.203	E: = 2232977.734
<b>CO-NORTH NAD 27 (SURFACE LOCATION)</b>	
LATITUDE = 39°56'00.94" (39.933594)	
LONGITUDE = 108°14'05.97" (108.234992)	
<b>STATE PLANE COORDINATES</b>	
N: = 230480.101	E: = 1233137.566

<b>FROM SURFACE LOCATION TO NEAREST:</b>
TOWN/COMMUNITY: NE 18.5 MILES TO MEEKER
UNIT BOUNDARY: NLY $\pm 13,983'$ TO BOUNDARY
UNIT BOUNDARY: WLY $\pm 11,831'$ TO BOUNDARY
UNIT BOUNDARY: N12°W $\pm 3,441'$ TO BOUNDARY
LEASE BOUNDARY: NLY $\pm 675'$ TO BOUNDARY
LEASE BOUNDARY: ELY $\pm 1,914'$ TO BOUNDARY
EXISTING WELL: NLY $\pm 72'$ TO T25X-25G WELL HEAD
EXISTING WELL: NWLY $\pm 4,508'$ TO 23-4 FEDERAL

**T1S, R97W, 6th P.M.**

**ExxonMobil Oil Corporation**

TARGET BOTTOM HOLE, PICEANCE CREEK UNIT  
T25X-25G9, LOCATED AS SHOWN IN THE NE  
1/4 SE 1/4 (LOT 9) OF SECTION 26, T1S,  
R97W, 6th P.M., RIO BLANCO COUNTY,  
COLORADO.



◆ = SECTION CORNERS LOCATED

**BASIS OF BEARINGS & BASIS OF ELEVATION**

BASIS OF BEARINGS IS A LINE BETWEEN MAGNOLIA & MEYERS TRIANGULATION  
STATION GRID COORDINATES WHICH IS ASSUMED TO BEAR S82°36'07"E.

BASIS OF ELEVATIONS IS MAGNOLIA TRIANGULATION STATION LOCATED IN THE  
NW 1/4 OF SECTION 9, T2S, R96W, 6th P.M. REPORTED FROM THE NATIONAL  
GEODETIC SURVEY AS BEING 7529 FEET (NAVD 88).  
WE MEASURED IT TO BE 7526.2'

**NOTES:**

1. Well footages are measured at right angles to the Section Lines.
2. Bearings are based on Global Positioning Satellite observations.

THIS IS TO CERTIFY THAT THE ABOVE PLAT WAS PREPARED  
FROM FIELD NOTES OF ACTUAL SURVEY MADE BY ME, AND/OR  
UNDER MY SUPERVISION AND THAT THE SAME ARE TRUE  
AND CORRECT TO THE BEST OF MY KNOWLEDGE AND BELIEF.

# 30125

REGISTERED LAND SURVEYOR  
REGISTRATION NO. 30125  
STATE OF COLORADO

**TRI STATE LAND SURVEYING & CONSULTING**

180 NORTH VERNAL AVE. - VERNAL, UTAH 84078

(435) 781-2501

DATE SURVEYED:  
12-13-06

SURVEYED BY: D.P.

DATE DRAWN:  
03-28-07

DRAWN BY: D.COX

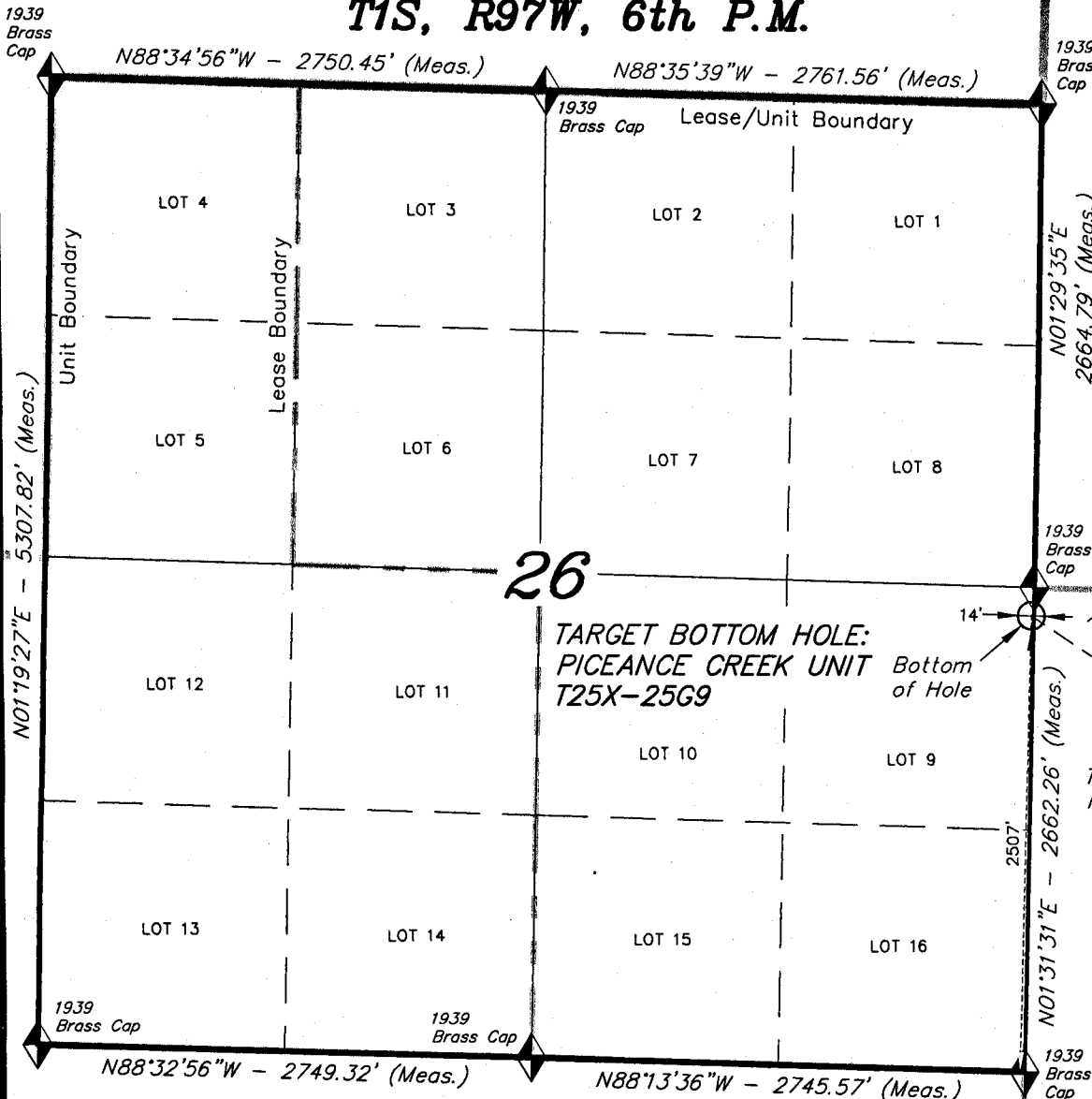
REVISED:

SCALE: 1" = 1000'

**SHEET**

**1ii**

**OF 8**



CO-NORTH NAD 83 (BOTTOM HOLE)		FROM BOTTOM OF HOLE TO NEAREST:	
LATITUDE = 39°56'05.94" (39.934983)		UNIT BOUNDARY: NLY ±2,020' TO BOUNDARY	
LONGITUDE = 108°14'19.11" (108.238642)		UNIT BOUNDARY: WLY ±10,991' TO BOUNDARY	
STATE PLANE COORDINATES		LEASE BOUNDARY: NLY ±2,057' TO BOUNDARY	
N: = 1231021.107	E: = 2232150.161	LEASE BOUNDARY: WLY ±2,739' TO BOUNDARY	
CO-NORTH NAD 27 (BOTTOM HOLE)		LEASE BOUNDARY: N07E ±156' TO BOUNDARY	
LATITUDE = 39°56'06.04" (39.935011)			
LONGITUDE = 108°14'16.80" (108.238001)			
STATE PLANE COORDINATES			
N: = 231022.000	E: = 1232310.000		