

T4S, R96W, 6th P.M.

EnCana OIL & GAS (USA) INC.

1953 Brass Cap,  
0.8' High, Mound  
of Stones  
Lat: 39.666042°  
Long: 108.126567°

1953 Brass Cap,  
0.6' High, Steel Post  
Lat: 39.666053°  
Long: 108.117142°

1953 Brass Cap,  
0.4' High, Steel Post  
Lat: 39.666064°  
Long: 108.107683°

Well location, SGU 8502A-36 B36 496, located  
as shown in Lot 2 of Section 36, T4S, R96W,  
6th P.M., Garfield County, Colorado.

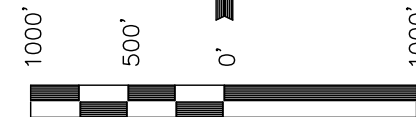
### BASIS OF ELEVATION

BENCH MARK (H79) LOCATED IN THE NE 1/4 OF SECTION  
35, T4S, R98W, 6th P.M. TAKEN FROM THE BULL FORK  
QUADRANGLE, COLORADO, 7.5 MINUTE SERIES (TOPO  
GRAPHICAL MAP) PUBLISHED BY THE UNITED STATES  
DEPARTMENT OF THE INTERIOR, GEOLOGICAL SURVEY. SAID  
ELEVATION IS MARKED AS BEING 8535 FEET.

### BASIS OF BEARINGS

BASIS OF BEARINGS IS A G.P.S. OBSERVATION.

Sheet 1t of 11

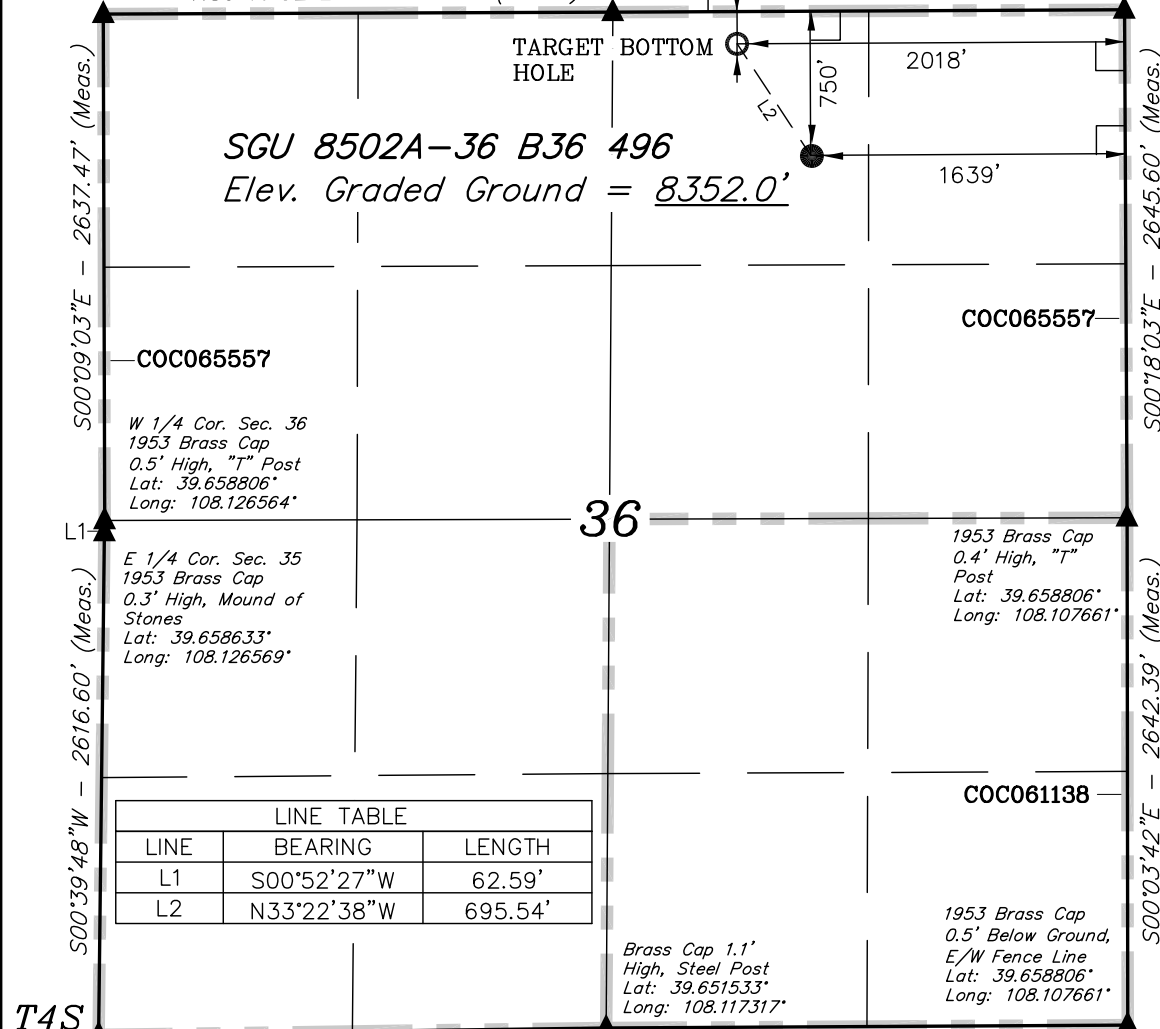


SCALE

### CERTIFICATE

THIS IS TO CERTIFY THAT THE ABOVE PLAT WAS PREPARED FROM  
FIELD NOTES OF ACTUAL SURVEYS MADE BY ME OR UNDER MY  
SUPERVISION AND THAT THE SAME ARE TRUE AND CORRECT TO THE  
BEST OF MY KNOWLEDGE AND BELIEF.

REGISTERED LAND SURVEYOR  
REGISTRATION NO. 17492  
STATE OF COLORADO



T4S  
T5S

R  
96  
W

R  
95  
W

### LEGEND:

- = 90° SYMBOL
- = PROPOSED WELL HEAD.
- ▲ = SECTION CORNERS LOCATED.

NOTE:  
SEE ADDENDUM PLAT FOR EXISTING  
IMPROVEMENT WITHIN 400' OF THE  
PROPOSED WELL HEAD.

PDOP = 1.9

NAD 83 (TARGET BOTTOM HOLE)	NAD 83 (SURFACE LOCATION)
LATITUDE = 39°39'56.14" (39.665594)	LATITUDE = 39°39'50.39" (39.663997)
LONGITUDE = 108°06'53.45" (108.114847)	LONGITUDE = 108°06'48.58" (108.113494)
NAD 27 (TARGET BOTTOM HOLE)	NAD 27 (SURFACE LOCATION)
LATITUDE = 39°39'56.23" (39.665619)	LATITUDE = 39°39'50.48" (39.664022)
LONGITUDE = 108°06'51.17" (108.114214)	LONGITUDE = 108°06'46.29" (108.112858)

UINTAH ENGINEERING & LAND SURVEYING

85 SOUTH 200 EAST - VERNAL, UTAH 84078

(435) 789-1017

SCALE 1" = 1000'	DATE SURVEYED: 08-06-09	DATE DRAWN: 03-24-10
PARTY D.K. J.R. D.R.B.	REFERENCES G.L.O. PLAT	
WEATHER COLD	FILE EnCana OIL & GAS (USA) INC.	