

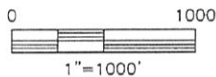
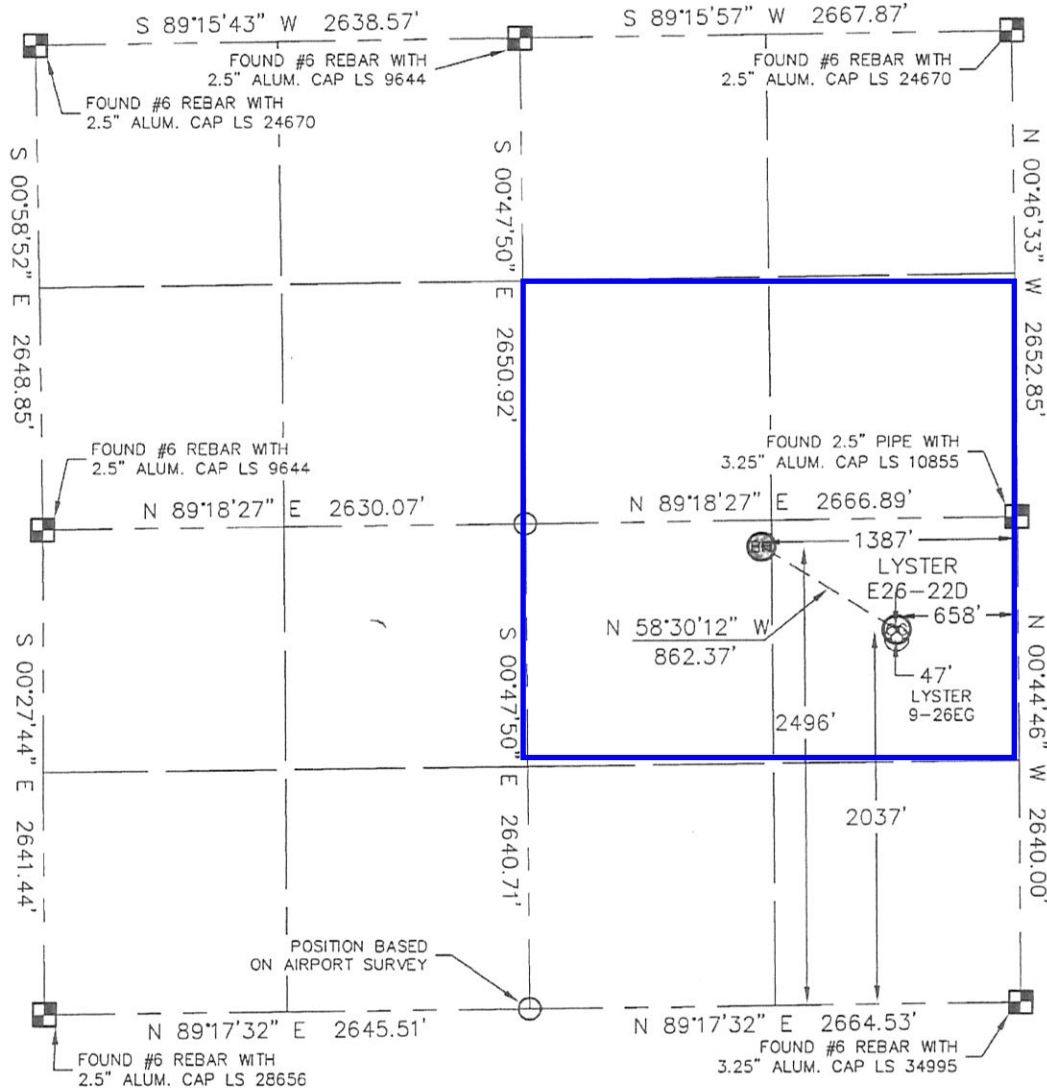
PROPOSED SPACING UNIT PLAT - NOBLE ENERGY

Lat40°, LLC 1635 Foxtrail Drive, Suite 325 Loveland, CO 80538

WELL LOCATION CERTIFICATE

THIS MAP DOES NOT REPRESENT A BOUNDARY SURVEY

SECTION: 26
TOWNSHIP: 6N
RANGE: 65W



NOTE:

- 1) Bearings shown are Grid Bearings of the Colorado State Plane Coordinate System, North Zone, North American Datum 1983/2007. The lineal dimensions as contained herein are based upon the "U.S. Survey Foot."
- 2) Ground elevations are based on an observed GPS elevation (NAVD 1988 DATUM).
- 3) NEAREST EXISTING WELL: Lyster 9-26EG 47' SOUTH
- 4) IMPROVEMENTS: See VISIBLE IMPROVEMENTS exhibit for all visible improvements within 400' of disturbed area.
- 5) SURFACE USE: CROP-IRRIGATED, EX. WELL SITE

NOTE

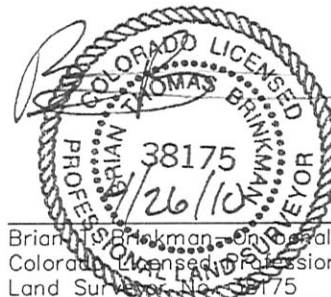
According to Colorado law, you must commence any legal action based upon any defect in this W.L.C. within three years after you discover such defect. In no event, may any action based upon any defect in this survey be commenced more than ten years after the date of the certificate shown hereon. (13-80-105 C.R.S.)

LEGEND

- = ALIQUOT MONUMENT AS DESCRIBED
- = CALCULATED POSITION

SURFACE LOCATION
LATITUDE: 40.45527°N
LONGITUDE: 104.62313°W
PDOP: 1.1
ELEV: 4688
1/4, 1/4: NE1/4SE1/4
NEAREST PROPERTY LINE: 430' NORTH

BOTTOM HOLE
LATITUDE: 40.45653°N
LONGITUDE: 104.62575°W



Brian H. Brinkman, On behalf of Lat40°, LLC
Colorado Licensed Professional
Land Surveyor No. 38175

PROJECT#: 2010015