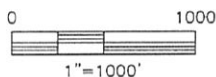
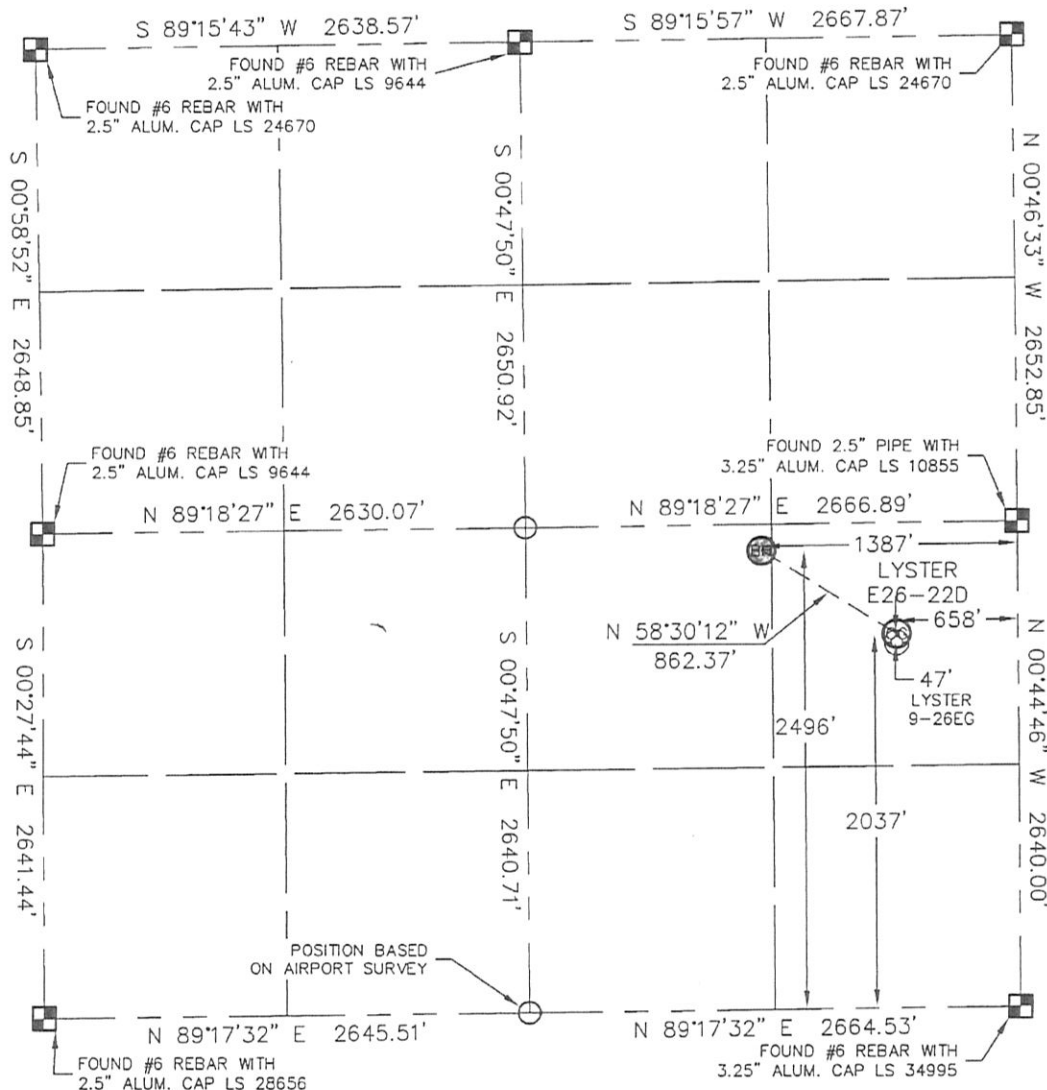


WELL LOCATION CERTIFICATE

THIS MAP DOES NOT REPRESENT A BOUNDARY SURVEY

SECTION: 26
TOWNSHIP: 6N
RANGE: 65W



In accordance with a request from BEAU FRITZ with Noble Energy Inc., Lat40°, LLC has determined the surface location of the LYSTER E26-22D to be 2037' from the SOUTH line and 658' from the EAST line and the bottom hole to be 2496' from the SOUTH line and 1387' from the EAST line as measured at right angles from the section line of Section 26, Township 6 North, Range 65 West of the Sixth Principal Meridian, County of Weld, State of Colorado.

I hereby state that this Well Location Certificate was prepared by me, or under my direct supervision, that the fieldwork was completed on 4/19/10, for and on behalf of Noble Energy Inc.. That this is not a Land Survey Plat or an Improvement Survey Plat, and that it is not to be relied upon for establishment of fence, building, or other future improvement lines.

SURFACE LOCATION	BOTTOM HOLE
LATITUDE: 40.45527°N	LATITUDE: 40.45653°N
LONGITUDE: 104.62313°W	LONGITUDE: 104.62575°W
PDOP: 1.1	
ELEV: 4688	
1/4, 1/4: NE1/4SE1/4	
NEAREST PROPERTY LINE: 430' NORTH	

NOTE:

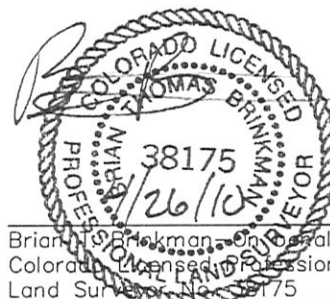
- 1) Bearings shown are Grid Bearings of the Colorado State Plane Coordinate System, North Zone, North American Datum 1983/2007. The lineal dimensions as contained herein are based upon the "U.S. Survey Foot."
- 2) Ground elevations are based on an observed GPS elevation (NAVD 1988 DATUM).
- 3) NEAREST EXISTING WELL: LYSTER 9-26EG 47' SOUTH
- 4) IMPROVEMENTS: See VISIBLE IMPROVEMENTS exhibit for all visible improvements within 400' of disturbed area.
- 5) SURFACE USE: CROP-IRRIGATED, EX. WELL SITE

NOTE

According to Colorado law, you must commence any legal action based upon any defect in this W.L.C. within three years after you discover such defect. In no event, may any action based upon any defect in this survey be commenced more than ten years after the date of the certificate shown hereon. (13-80-105 C.R.S.)

LEGEND

- = ALIQUOT MONUMENT AS DESCRIBED
- = CALCULATED POSITION

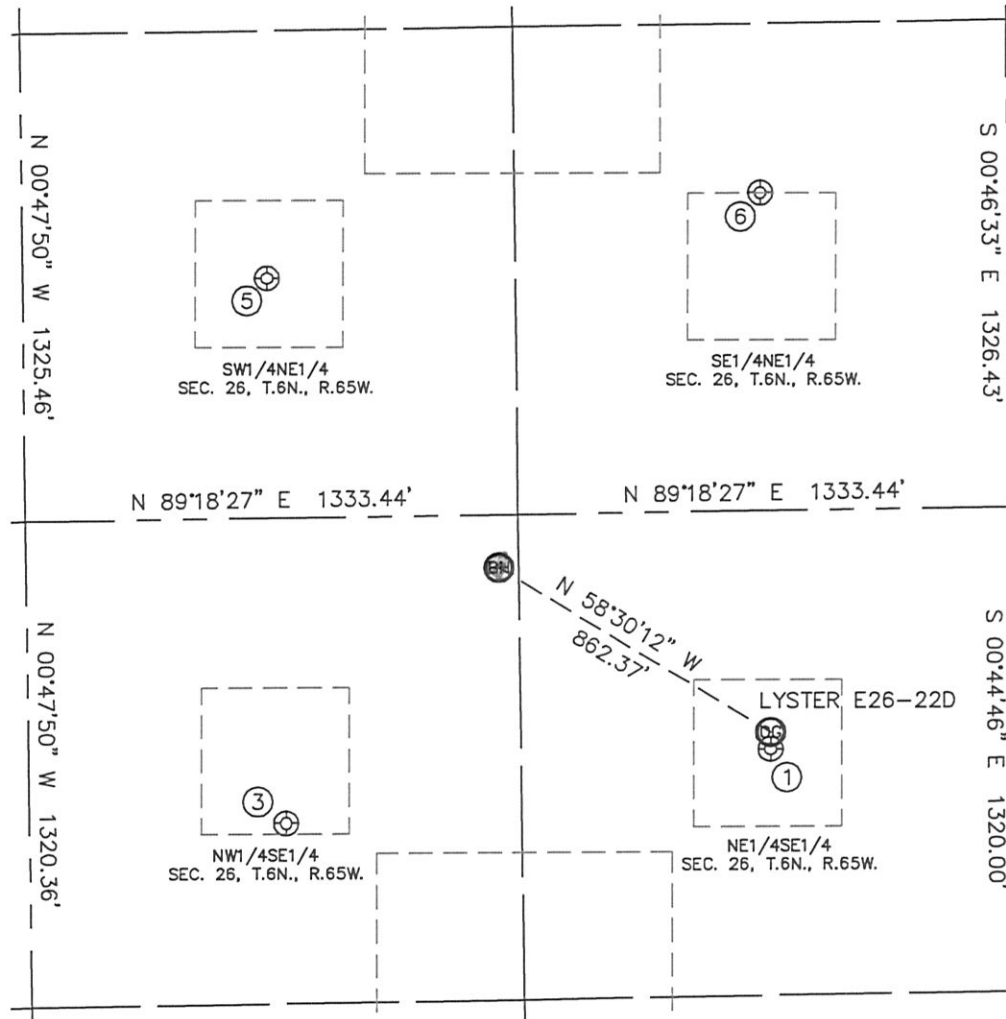


Brian H. Brinkman, On behalf of Lat40°, LLC
Colorado Licensed Professional
Land Surveyor No. 38175

PROJECT#: 2010015

SITE SKETCH

SECTION: 26
TOWNSHIP: 6N
RANGE: 65W



①

LYSTER 9-26EG
NE1/4SE1/4
1990' FSL
658' FEL
LAT-40.45514°N
LONG-104.62313°W
PDOP: 1.5
ELEV: 4688

③

LYSTER E26-10X
NW1/4SE1/4
1810' FSL
1972' FEL
LAT-40.45464°N
LONG-104.62785°W
PDOP: 1.9
ELEV: 4688

⑤

HOWARD E26-6
SW1/4NE1/4
2000' FNL
2007' FEL
LAT-40.45871°N
LONG-104.62799°W
PDOP: 1.8
ELEV: 4701

⑥

HOWARD 11-26EG
SE1/4NE1/4
1788' FNL
669' FEL
LAT-40.45930°N
LONG-104.62318°W
PDOP: 2.0
ELEV: 4695

