

T1S, R97W, 6th P.M.

ExxonMobil Oil Corporation

WELL LOCATION, PICEANCE CREEK UNIT
T25X-25G6, LOCATED AS SHOWN IN THE NW
1/4 SW 1/4 (LOT 12) OF SECTION 25, T1S,
R97W, 6th P.M., RIO BLANCO COUNTY,
COLORADO.



SECTION CORNERS LOCATED

BASIS OF BEARINGS & BASIS OF ELEVATION

BASIS OF BEARINGS IS A LINE BETWEEN MAGNOLIA & MEYERS TRIANGULATION STATION GRID COORDINATES WHICH IS ASSUMED TO BEAR S82°36'07"E.

BASIS OF ELEVATIONS IS MAGNOLIA TRIANGULATION STATION LOCATED IN THE NW 1/4 OF SECTION 9, T2S, R96W, 6th P.M. REPORTED FROM THE NATIONAL GEODETIC SURVEY AS BEING 7529 FEET (NAVD 88). WE MEASURED IT TO BE 7526.2'

NOTES:

1. Well footages are measured at right angles to the Section Lines.
2. Bearings are based on Global Positioning Satellite observations.
3. G.P.S. Operator: D. PETTY, (PDOP) = 2.4

THIS IS TO CERTIFY THAT THE ABOVE PLAT WAS PREPARED FROM FIELD NOTES OF ACTUAL SURVEY MADE BY ME, OR UNDER MY SUPERVISION AND THAT THE SAME ARE TRUE AND CORRECT TO THE BEST OF MY KNOWLEDGE AND BELIEF.

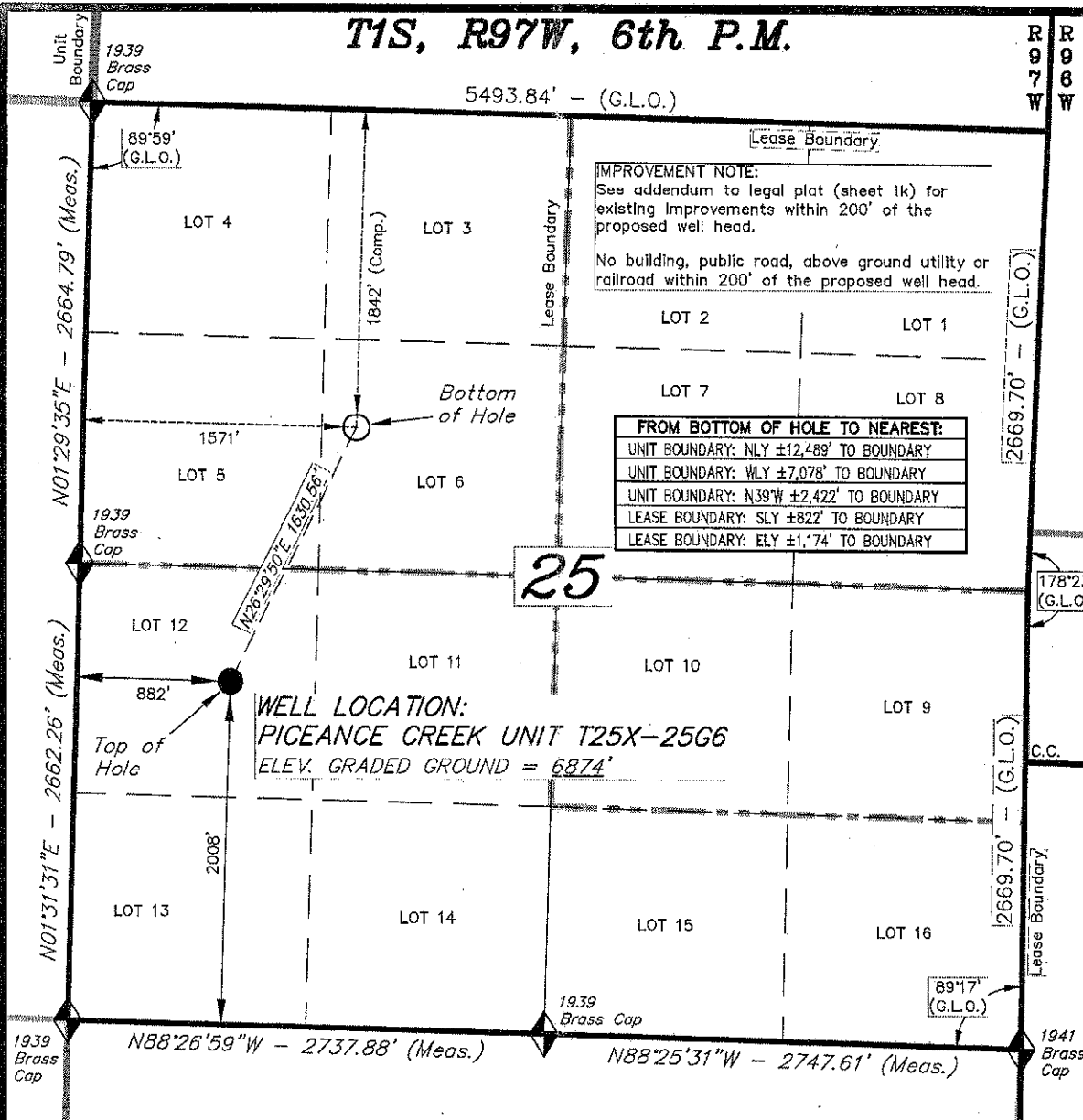
30125

REGISTERED LAND SURVEYOR
REGISTRATION NO. 30125
STATE OF COLORADO

TRI STATE LAND SURVEYING & CONSULTING

180 NORTH VERNAL AVE. - VERNAL, UTAH 84078
(435) 781-2501

DATE SURVEYED: 12-13-06	SURVEYED BY: D.P.	SHEET 1f OF 8
DATE DRAWN: 03-28-07	DRAWN BY: D.COX	
REVISED: 01-09-10	SCALE: 1" = 1000'	



IMPROVEMENT NOTE:
See addendum to legal plat (sheet 1k) for
existing Improvements within 200' of the
proposed well head.
No building, public road, above ground utility or
railroad within 200' of the proposed well head.

FROM BOTTOM OF HOLE TO NEAREST:	
UNIT BOUNDARY:	NLY ±12,489' TO BOUNDARY
UNIT BOUNDARY:	WLY ±7,078' TO BOUNDARY
UNIT BOUNDARY:	N39°W ±2,422' TO BOUNDARY
LEASE BOUNDARY:	SLY ±822' TO BOUNDARY
LEASE BOUNDARY:	ELY ±1,174' TO BOUNDARY

CO-NORTH NAD 83 (SURFACE LOCATION)		CO-NORTH NAD 83 (BOTTOM HOLE)		FROM SURFACE LOCATION TO NEAREST:	
LATITUDE = 39°56'01.04" (39.933621)		LATITUDE = 39°56'15.67" (39.937685)		TOWN/COMMUNITY: NE 18.5 MILES TO MEEKER	
LONGITUDE = 108°14'07.58" (108.235438)		LONGITUDE = 108°13'58.82" (108.233008)		UNIT BOUNDARY: NLY ±13,964' TO BOUNDARY	
STATE PLANE COORDINATES		STATE PLANE COORDINATES		UNIT BOUNDARY: WLY ±11,886' TO BOUNDARY	
N: = 1230497.347	E: = 2233032.958	N: = 1231956.114	E: = 2233760.181	UNIT BOUNDARY: N13°W ±3,436' TO BOUNDARY	
CO-NORTH NAD 27 (SURFACE LOCATION)		CO-NORTH NAD 27 (BOTTOM HOLE)		LEASE BOUNDARY: NLY ±856' TO BOUNDARY	
LATITUDE = 39°56'01.14" (39.933649)		LATITUDE = 39°56'15.77" (39.937713)		LEASE BOUNDARY: ELY ±1,859' TO BOUNDARY	
LONGITUDE = 108°14'05.27" (108.234797)		LONGITUDE = 108°13'56.52" (108.232366)		EXISTING WELL: NELY ±15' TO T25X-25G WELL HEAD	
STATE PLANE COORDINATES		STATE PLANE COORDINATES		EXISTING WELL: NWLY ±4,610' TO 23-4 FEDERAL	
N: = 230498.245	E: = 1233192.789	N: = 231957.000	E: = 1233920.000		