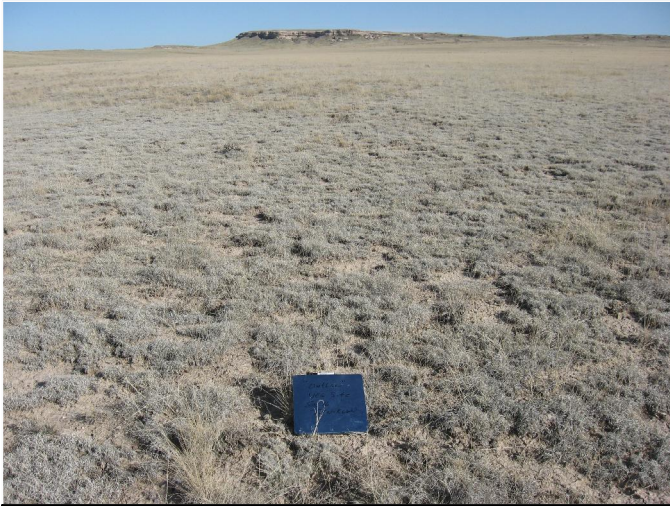


**SLAWSON EXPLORATION COMPANY, INC.
REFERENCE PICTURES FOR OUTLAW 16-11-66 PAD**

**REFERENCE LOCATION SE1/4 SE1/4 SECTION 16 T11N R66W
WELD COUNTY, COLORADO
LAT: 40.915491° LONG: -104.776137°**

**SURFACE USE: RANGELAND
VEGETATION: NATIVE GRASSLAND**



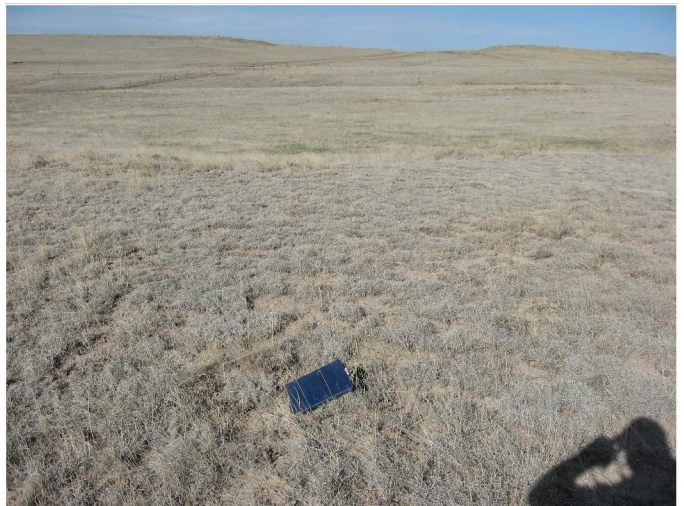
NORTH



EAST



SOUTH



WEST

DATE OF PICTURES 04/28/2010

5/04/2010



WESTERN LAND SERVICES

Sheridan, WY 82801 (307)673-1817

DP: L:\Slawson\Permitting_Booklets\Outlaw... Date: 4-15-10

**SLAWSON EXPLORATION COMPANY, INC
OUTLAW 16-11-66**

**SL: SE1/4SE1/4, S.16, T11N-R66W
BL: NW1/4 NE1/4, S.16, T11N-R66W
6TH P.M., WELD COUNTY, COLORADO**