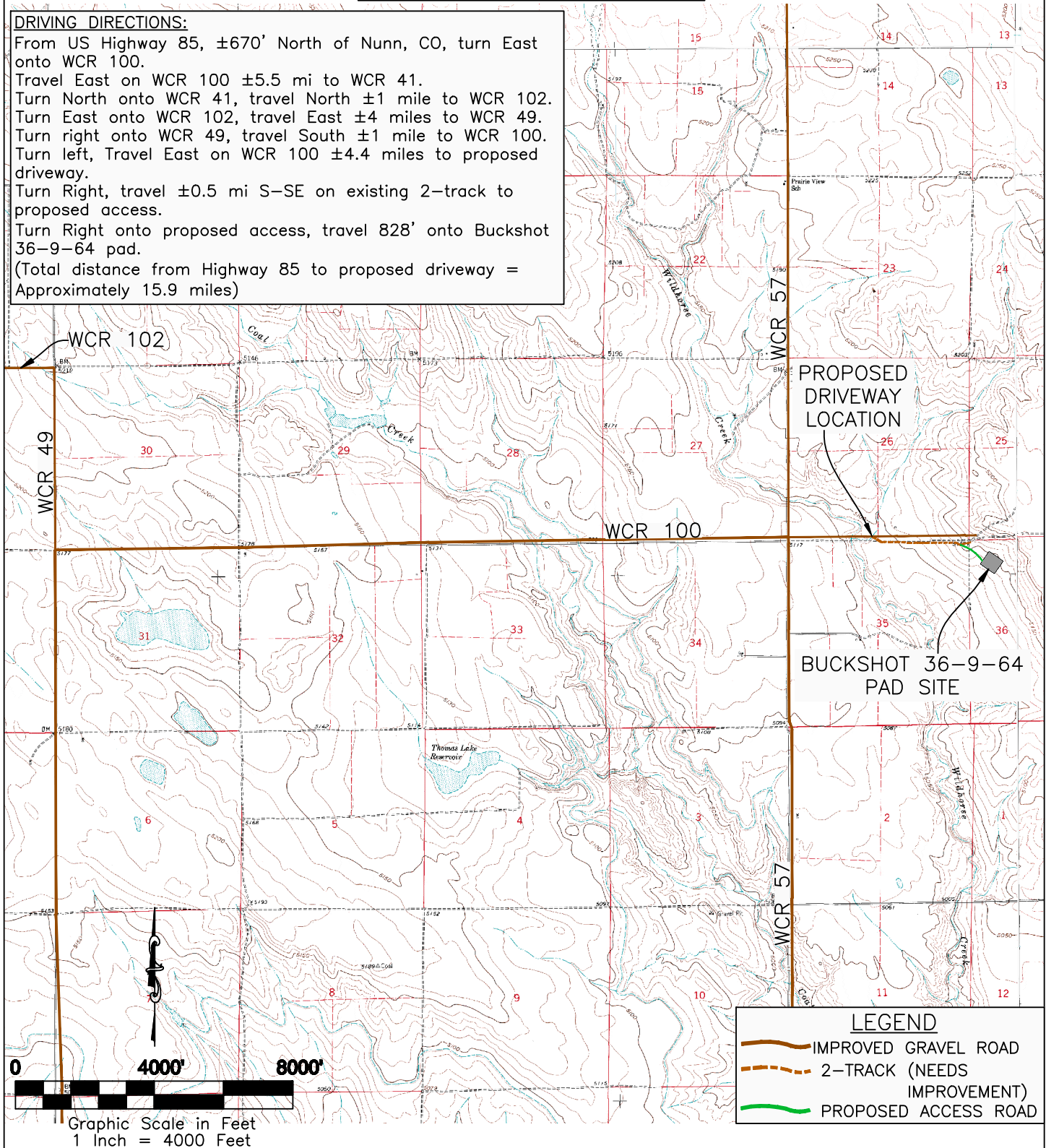


ACCESS ROAD MAP BUCKSHOT 36-9-64

DRIVING DIRECTIONS:

From US Highway 85, $\pm 670'$ North of Nunn, CO, turn East onto WCR 100.
Travel East on WCR 100 ± 5.5 mi to WCR 41.
Turn North onto WCR 41, travel North ± 1 mile to WCR 102.
Turn East onto WCR 102, travel East ± 4 miles to WCR 49.
Turn right onto WCR 49, travel South ± 1 mile to WCR 100.
Turn left, Travel East on WCR 100 ± 4.4 miles to proposed driveway.
Turn Right, travel ± 0.5 mi S-SE on existing 2-track to proposed access.
Turn Right onto proposed access, travel 828' onto Buckshot 36-9-64 pad.
(Total distance from Highway 85 to proposed driveway = Approximately 15.9 miles)




WESTERN LAND SERVICES
Sheridan, WY 82801 (307)673-1817

DP: L:\Slawson\Permitting_Booklets\Buckshot Date: 6/08/2010

SLAWSON EXPLORATION COMPANY, INC
BUCKSHOT 36-9-64

SL: NW1/4 NW1/4, SECTION 36, T9N R64W
BL: SE1/4 SW1/4, SECTION 36, T9N R64W
6TH PM, WELD COUNTY, COLORADO