

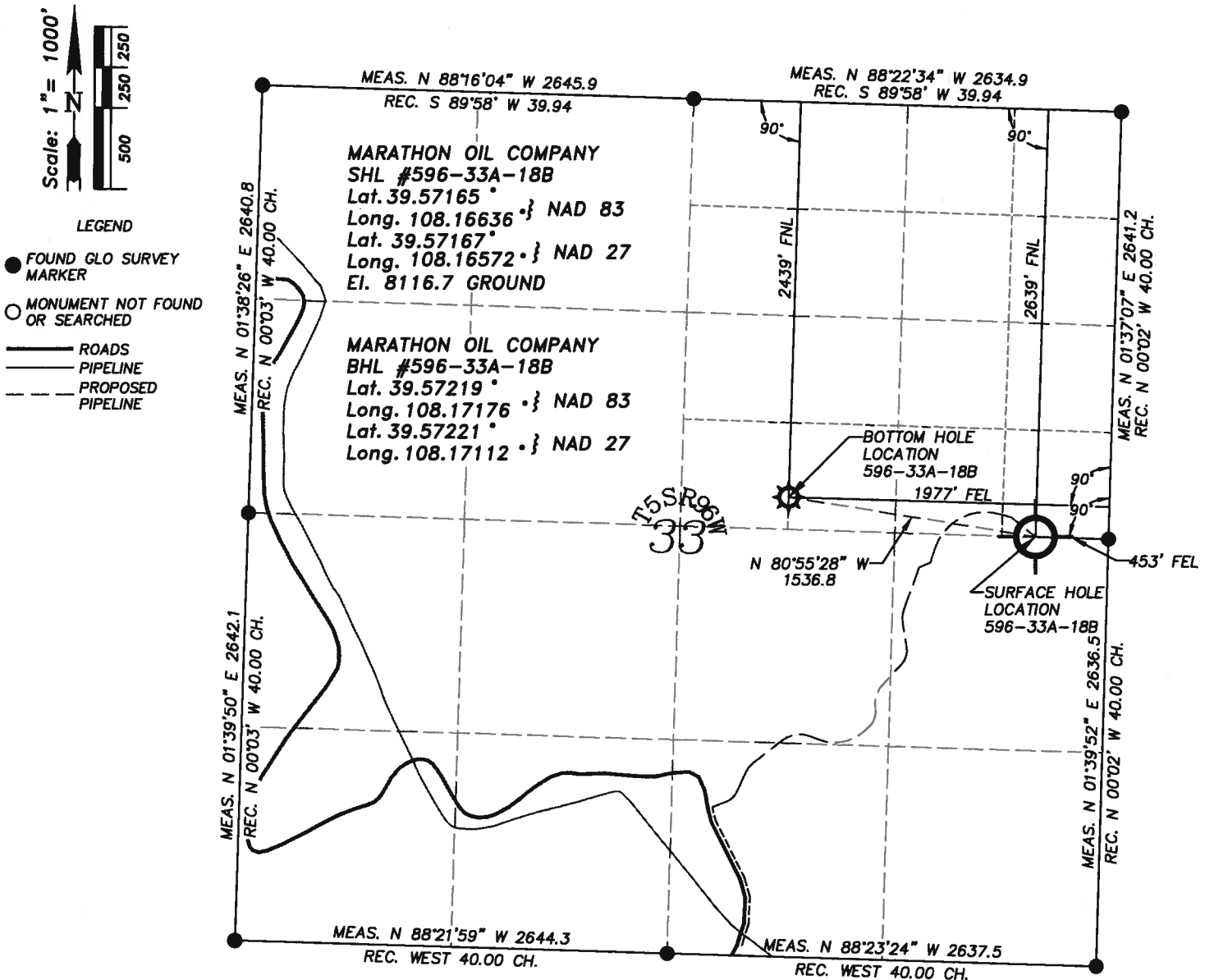
P.O. BOX 820
GREEN RIVER, WYOMING 82935

WILLIAM H. SMITH & ASSOCIATES P.C.
SURVEYING CONSULTANTS

T 5 S R 96 W

550 EAST 2ND NORTH
PH. 307-875-3638
FAX. 307-875-3640

PLAT FOR SURFACE & BOTTOM HOLE LOCATION

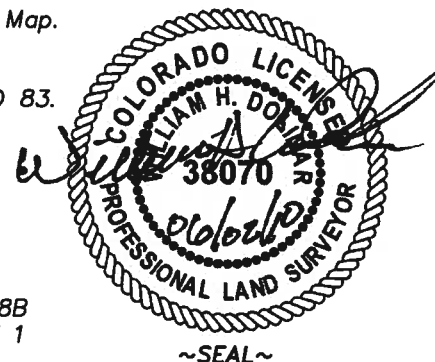


I, William H. Dolinar of Green River, Wyoming hereby certify that in accordance with a request from Frank Krugh for Marathon Oil Company, 5555 San Felipe, Houston, TX 77056. I and or personnel under my direction made a survey on the 9th day of September 2009, for the Surface Hole Location and Elevation of Marathon Oil Company, Well #596-33A-18B being located within the SE/4SE/4NE/4 of Section 33, and the Bottom Hole Location being located within the S/2SW/4NE/4 of Section 33, T 5 S, R 96 W, of the 6th Principal Meridian, Garfield County, State of Colorado, as shown on the above Section Map. Surface Hole Elevation of ungraded ground = 8116.7 feet.
Note: Basis of bearings are grid bearings based from GPS observations.
Horizontal Datum based on Colorado State Plane Coordinate System Central Zone NAD 83.
Vertical Datum based on NAVD 88 NGS Triangulation Station SHALE.
NOTE: Record bearings as shown are based on the General Land Office survey, as approved on April 10, 1919.

JOB NO. 26099
REV. 06/02/10 WHD
PAD 596-33A/PAD 596-33A PLATS.dwg

LEICA GPS GDOP OF 2.4 ON 09/01/2009
IMPROVEMENTS: NONE
SURFACE USE: GRADING: SCRUB OAK
AND NATURAL GROUND

596-33A-18B
SHEET 1 OF 1



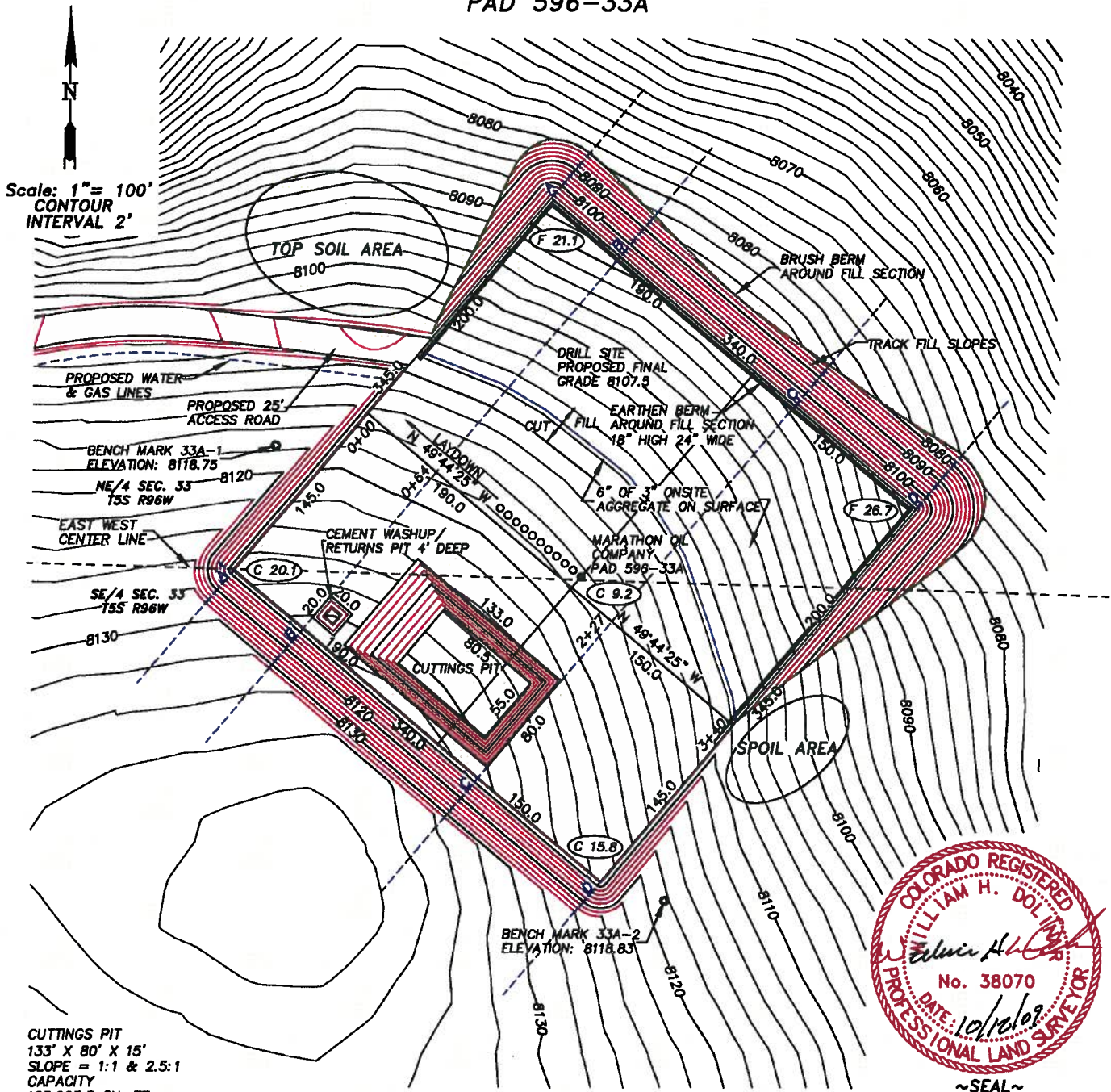
~SEAL~

WILLIAM H. SMITH & ASSOCIATES P.C.
SURVEYING CONSULTANTS
MARATHON OIL COMPANY

P.O. BOX 820
GREEN RIVER, WYOMING 82935

550 EAST 2ND NORTH
PH. 307-875-3638
FAX. 307-875-3640

PAD 596-33A



CUTTINGS PIT
133' X 80' X 15'
SLOPE = 1:1 & 2.5:1
CAPACITY
105,965.5 CU. FT.
3,924.7 CU. YDS.

CEMENT WASHUP/RETURNS PIT
20' X 20' X 4'
SLOPE = 1.5:1
CAPACITY
148 BBLs FULL
44 BBLs WORKING CAPACITY
WITH 2' FREE BOARD

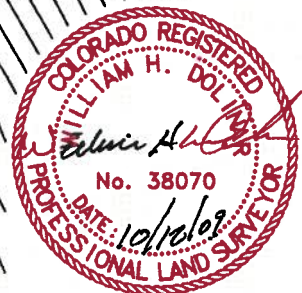
JOB NO. 26099
10/05/2009 CED
PAD596-33A/PAD596-33A.DWG

CUT/FILL SLOPES: 1.5:1
QUANTITIES:
TOTAL CUT = 47,822 BANK CUBIC YARDS
TOTAL FILL = 33,452 BANK CUBIC YARDS
TOPSOIL AT 20 INCHES OF DEPTH = 9,979 BANK CUBIC YARDS
SPOIL = 4,391 BANK CUBIC YARDS
DISTURBED AREA = 158,494 SQ. FT. OR 3.64 ACRES

NOTES:
1. ALL AVAILABLE TOPSOIL WITHIN DISTURBED AREA TO BE STOCKPILED FOR FUTURE RECLAMATION.
2. SIX INCHES OF 3" ONSITE AGGREGATE TO BE PLACED ON PAD SURFACE.

PREPARED FOR:
MARATHON OIL COMPANY
P.O. Box 3128
Houston, TX 77253
5555 San Felipe
Houston, TX 77056

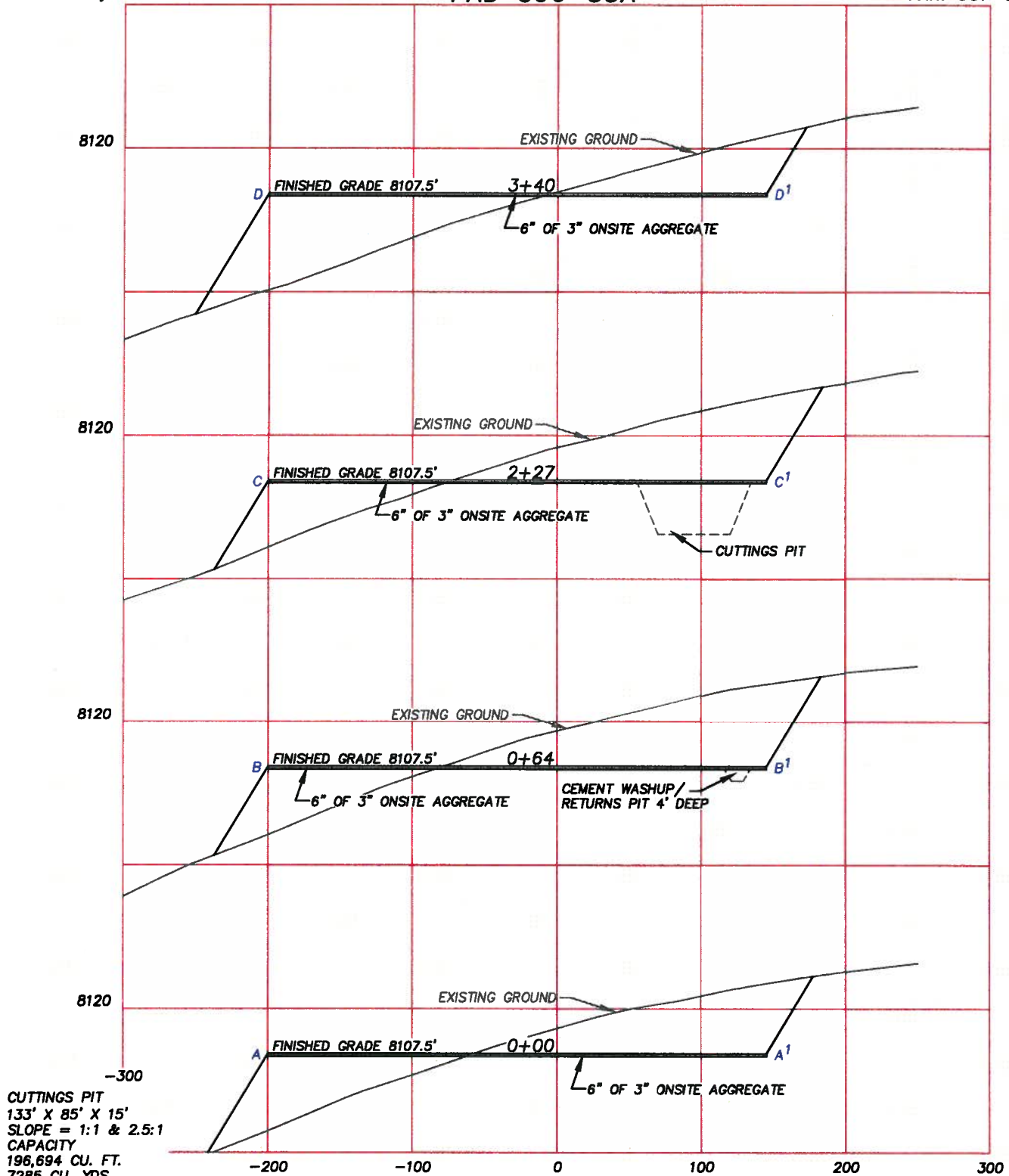
LOCATION:
PAD 596-33A
WITHIN THE E/2 SECTION 33,
T 5 S, R 96 W, 6TH PM.
GARFIELD COUNTY, COLORADO
SHEET 2 OF 16



WILLIAM H. SMITH & ASSOCIATES P.C.
SURVEYING CONSULTANTS
MARATHON OIL COMPANY
PAD 596-33A

P.O. BOX 820
GREEN RIVER, WYOMING 82935

550 EAST 2ND NORTH
PH. 307-875-3638
FAX. 307-875-3640



CUTTINGS PIT
133' X 85' X 15'
SLOPE = 1:1 & 2.5:1
CAPACITY
196,694 CU. FT.
7285 CU. YDS.

CEMENT WASHUP/RETURNS PIT
20' X 20' X 4'
SLOPE = 1.5:1
CAPACITY
148 BBLs FULL
44 BBLs WORKING CAPACITY
WITH 2' FREE BOARD

JOB NO. 26099
10/05/2009 CED
PAD596-33A/PAD596-33A.DWG

HORIZONTAL SCALE: 1"=100 FEET
VERTICAL SCALE: 1"=40.00 FEET

CUT/FILL SLOPES: 1.5:1

QUANTITIES:

TOTAL CUT = 47,822 BANK CUBIC YARDS

TOTAL FILL = 33,452 BANK CUBIC YARDS

TOPSOIL AT 20 INCHES OF DEPTH = 9,979 BANK CUBIC YARDS

SPOIL = 4,391 BANK CUBIC YARDS

DISTURBED AREA = 158,494 SQ. FT. OR 3.64 ACRES

NOTES: ALL AVAILABLE TOPSOIL WITHIN DISTURBED AREA TO BE STOCKPILED FOR FUTURE RECLAMATION.

PREPARED FOR:
MARATHON OIL COMPANY
P.O. Box 3128
Houston, TX 77253
5555 San Felipe
Houston, TX 77056

LOCATION:
PAD 596-33A
WITHIN THE E/2 SECTION 33,
T 5 S, R 96 W, 6TH PM.
GARFIELD COUNTY, COLORADO
SHEET 3 OF 16

WILLIAM H. SMITH & ASSOCIATES P.C.
SURVEYING CONSULTANTS
MARATHON OIL COMPANY

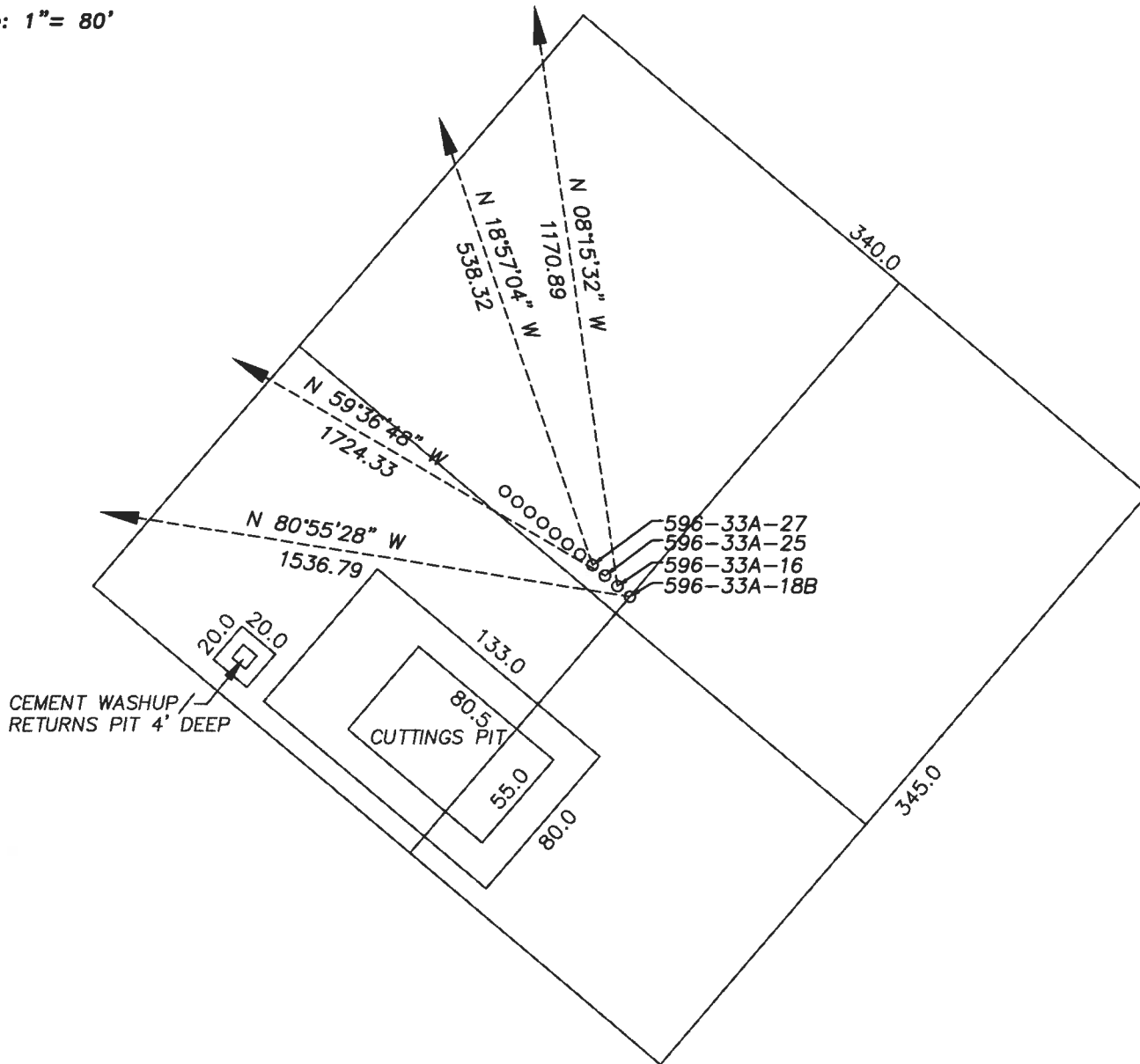
P.O. BOX 820
GREEN RIVER, WYOMING 82935

550 EAST 2ND NORTH
PH. 307-875-3638
FAX. 307-875-3640

PAD 596-33A DIRECTION LAYOUT



Scale: 1" = 80'



PREPARED FOR:
MARATHON OIL COMPANY
P.O. Box 3128
Houston, TX 77253
5555 San Felipe
Houston, TX 77056

LOCATION:
PAD 596-33A
WITHIN THE E/2 SECTION 33,
T5S, R96W, 6TH PM.
GARFIELD COUNTY, COLORADO
SHEET 3 OF 4

JOB NO. 26099
06/09/2010 CED
PAD596-33A/PAD596-33A DRILL DIRECTION.DWG

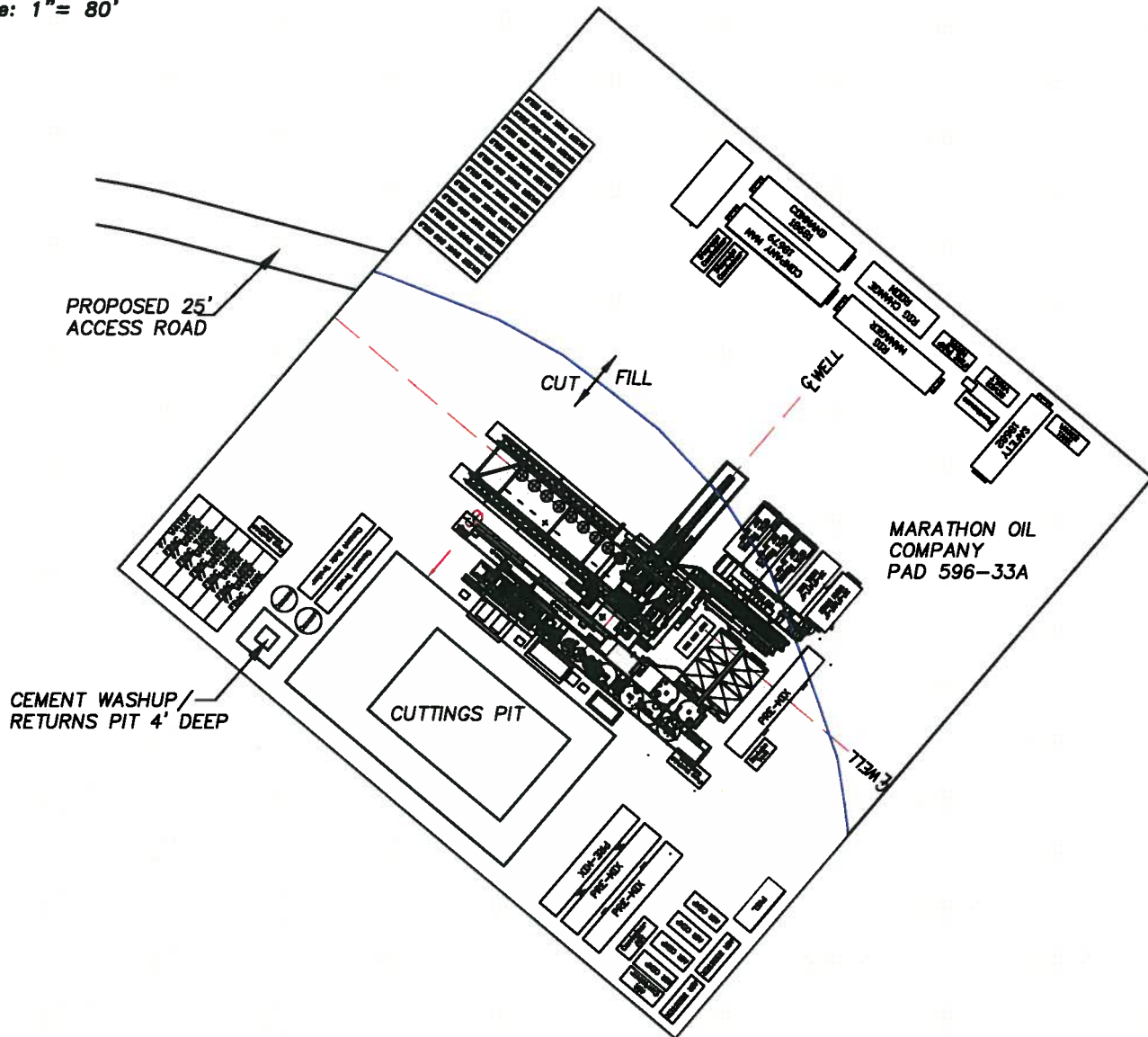
WILLIAM H. SMITH & ASSOCIATES P.C.
SURVEYING CONSULTANTS
MARATHON OIL COMPANY
PAD 596-33A DRILLING FACILITY LAYOUT

P.O. BOX 820
GREEN RIVER, WYOMING 82935

550 EAST 2ND NORTH
PH. 307-875-3638
FAX. 307-875-3640



Scale: 1" = 80'



PREPARED FOR:
MARATHON OIL COMPANY
P.O. Box 3128
Houston, TX 77253
5555 San Felipe
Houston, TX 77056

LOCATION:
PAD 596-33A
WITHIN THE E/2 SECTION 33,
T 5 S, R 96 W, 6TH PM.
GARFIELD COUNTY, COLORADO
SHEET 9 OF 16

JOB NO. 26099
10/05/2009 CED
PAD596-33A/04-596-33A FACILITIES CHEV.DWG