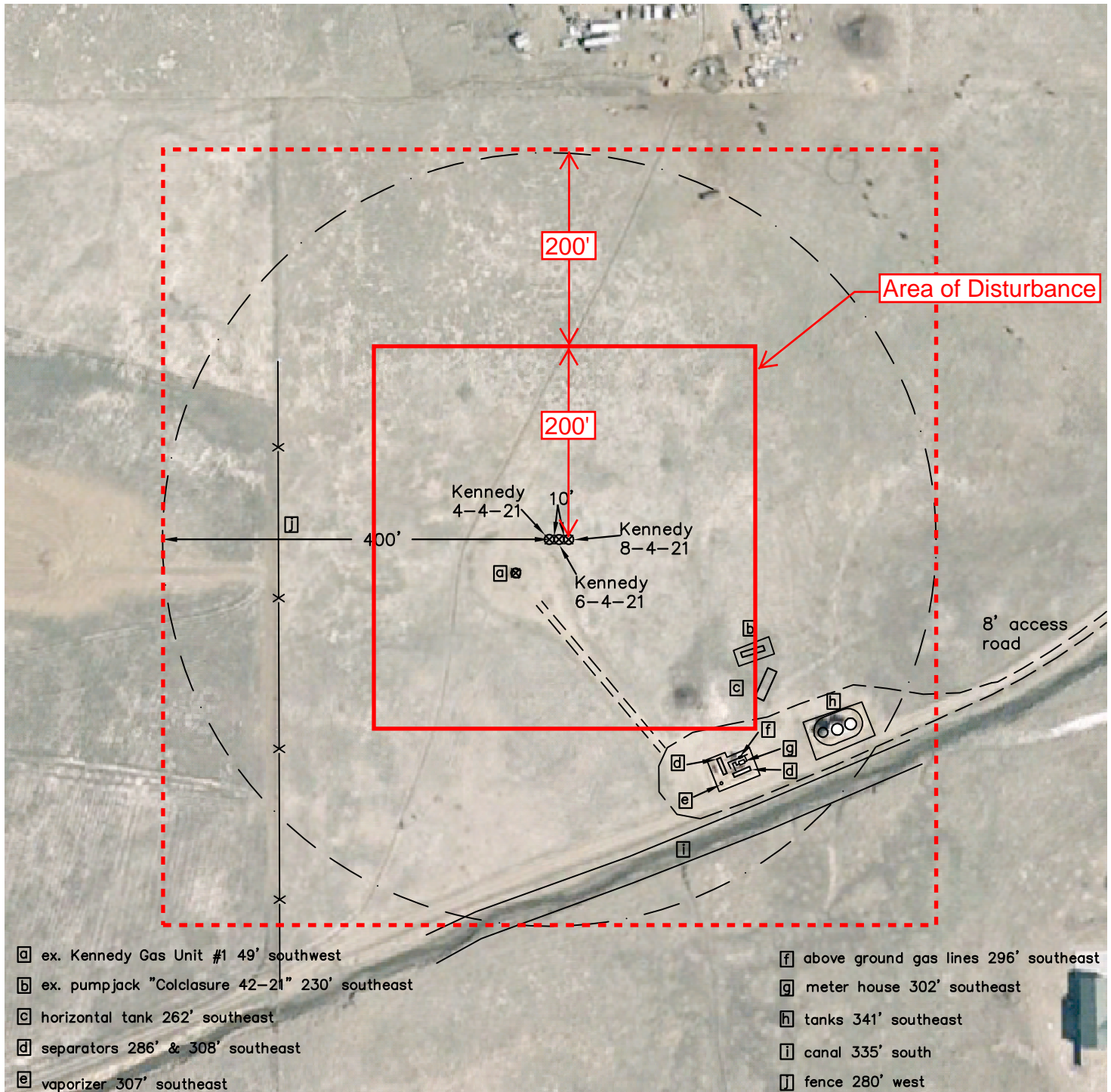


Location Drawing



Frederick Land Surveying, Inc.
6760 North Franklin Avenue
Loveland, Colorado 80538
(970) 669-2100 - Fax (970) 669-3725



Well Site Kennedy 4-4-21, 6-4-21, 8-4-21

IMPROVEMENTS WITHIN 400 FEET

Township 2 North, Range 68 West,
Section 21: SE¹NE¹
Weld County, Colorado

Scale: 1"=150'

January 26, 2010