

# ENSIGN

## Directional

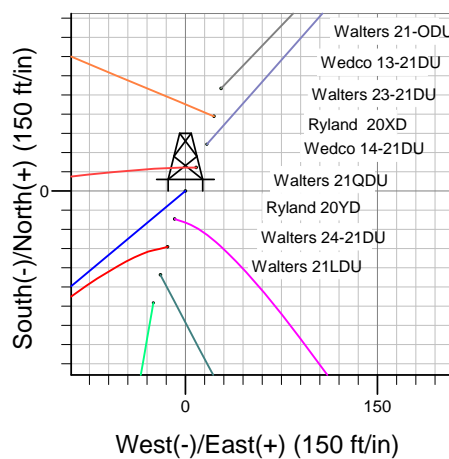
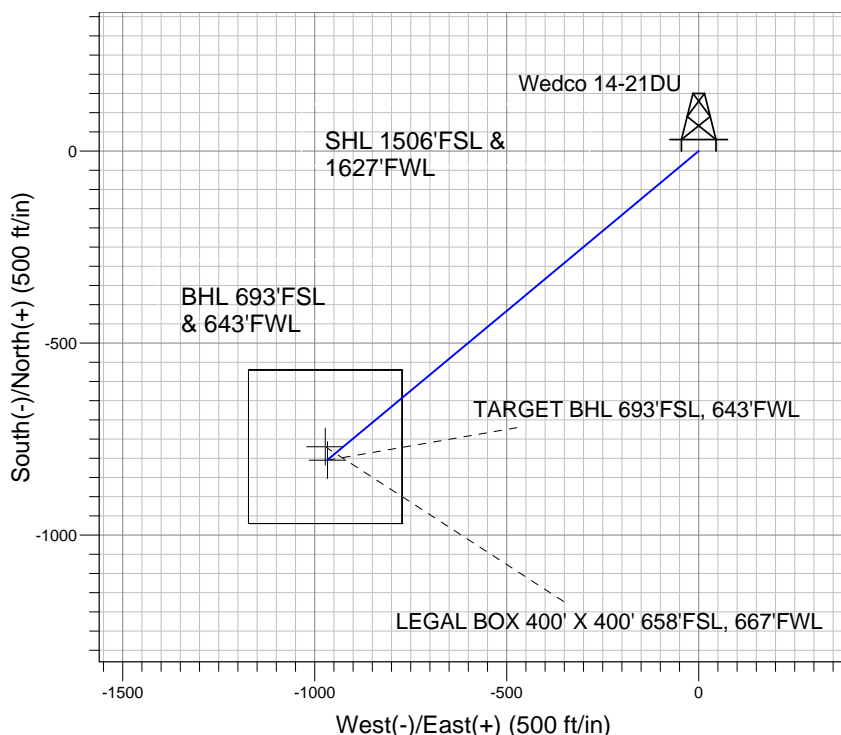
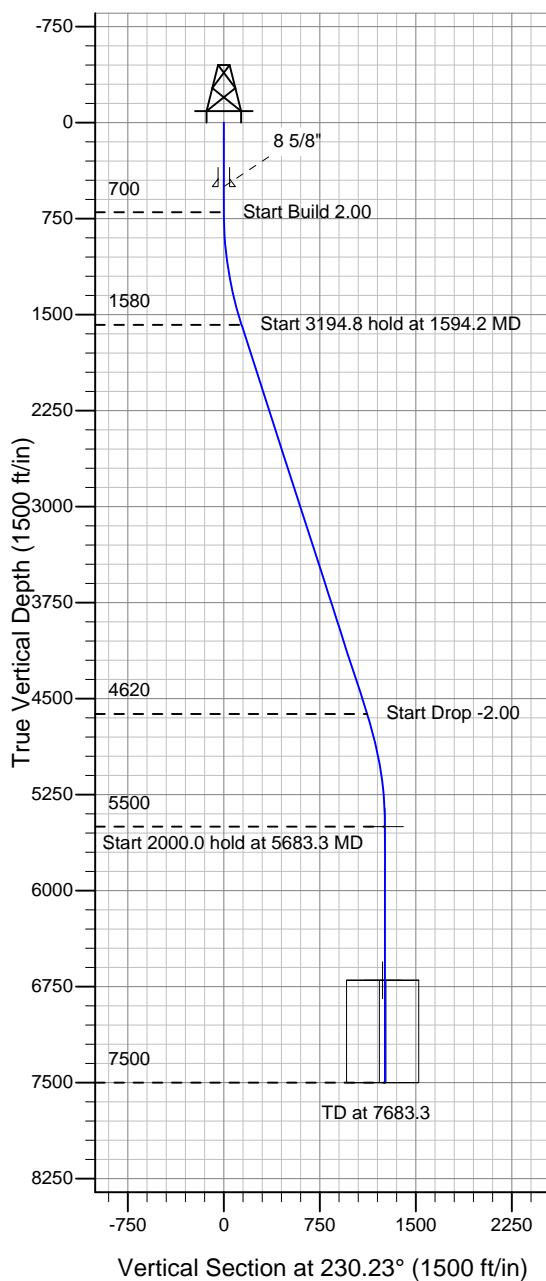
Well Name: **Wedco 14-21DU**

Surface Location: Walters/Wedco/Ryland Pad Sec.21-T4N-R67W  
North American Datum 1983 , US State Plane 1983 , Colorado Northern Zone

Ground Elevation: 4940.0

|       |       |   |            |                  |                   |      |
|-------|-------|---|------------|------------------|-------------------|------|
| +N/-S | +E/-W | Northing  | Easting    | Latitude         | Longitude         | Slot |
| 0.0   | 0.0   | 1350978.52  | 3167463.48 | 40° 17' 43.008 N | 104° 53' 58.704 W |      |
|       |       | Original Well Elev WELL @ 4953.0ft (Original Well Elev) |            |                  |                   |      |

### PETROLEUM DEVELOPMENT CORP Weld County CO



Wedco 14-21DU  
Plan #1 (6-4-10)  
12:14, June 08 2010



Azimuths to True North  
Magnetic North: 9.09°  
Magnetic Field  
Strength: 53233.6snT  
Dip Angle: 67.00°  
Date: 12/31/2009  
Model: IGRF200510

#### WELLBORE TARGET DETAILS (LAT/LONG)

| Name                                   | TVD    | +N/-S  | +E/-W  | Latitude         | Longitude         | Shape                            |
|--|--------|--------|--------|------------------|-------------------|----------------------------------|
| TARGET BHL 693'FSL, 643'FWL            | 5500.0 | -804.8 | -966.9 | 40° 17' 35.055 N | 104° 54' 11.182 W | Point                            |
| LEGAL BOX 400' X 400' 658'FSL, 667'FWL | 6700.0 | -769.8 | -972.9 | 40° 17' 35.401 N | 104° 54' 11.259 W | Rectangle (Sides: L400.0 W400.0) |

#### SECTION DETAILS

| Sec | MD     | Inc   | Azi    | TVD    | +N/-S  | +E/-W  | DLeg | TFace  | VSec   | Target                      |
|-----|--------|-------|--------|--------|--------|--------|------|--------|--------|-----------------------------|
| 1   | 0.0    | 0.00  | 0.00   | 0.0    | 0.0    | 0.0    | 0.00 | 0.00   | 0.0    |                             |
| 2   | 700.0  | 0.00  | 0.00   | 700.0  | 0.0    | 0.0    | 0.00 | 0.00   | 0.0    |                             |
| 3   | 1594.2 | 17.88 | 230.23 | 1579.8 | -88.6  | -106.4 | 2.00 | 230.23 | 138.4  |                             |
| 4   | 4789.1 | 17.88 | 230.23 | 4620.2 | -716.2 | -860.5 | 0.00 | 0.00   | 1119.6 |                             |
| 5   | 5683.3 | 0.00  | 0.00   | 5500.0 | -804.8 | -966.9 | 2.00 | 180.00 | 1258.0 | TARGET BHL 693'FSL, 643'FWL |
| 6   | 7683.3 | 0.00  | 0.00   | 7500.0 | -804.8 | -966.9 | 0.00 | 0.00   | 1258.0 |                             |