

Berry Petroleum Company

1999 Broadway, Suite 3700
Denver, CO 80202

Main (303) 999-4400
Fax (303) 999-4401

www.bry.com

June 29, 2010

Mr. Bob Weaver
Encana Oil & Gas (USA) Inc.
370 17th Street, Suite 1700
Denver, CO 80202

RE: 30 Day Notice Requirement (Rule 305 and 306)
Milk Cabin OM 12C M32 595, 12B, 13A, 12D, 12A,
11B, 11D, 13B, 14B, 13C, 13D, 14D
M32 595 Pad - SWSW Section 32 5S 95W
Garfield County, Colorado

Dear Bob,

Please be advised that Berry Petroleum Company will be re-filing permits and also will be Filing 4 additional new permits with the Colorado Oil and Gas Conservation Commission for the above-referenced wells.

- There have been no changes on land use and lease description.
- The pad has not been built and the pit has not been constructed.
- Conductors have not been set.
- No wells have been drilled to T.D.
- No rig is on-site at this time.
- The re-files will require expansion and/or additional surface disturbance of the pad.
- The location does not require a variance from any of the rules listed in Rule 306.d. (1). (A).(ii).
- The location is not in a restricted surface occupancy area, it is not in a sensitive wildlife habitat area.

Pursuant to Rule 305 and 306, the enclosed notification is required as part of the permitting process. Please sign and date where indicated and return to my attention.

Please contact me at 303.999.4246 if you have any questions.

Thank you for your assistance in this matter.

Very truly yours,

Patsy Branson
Senior Landman

:enclosures
cc: Janni Keidel

NOTICE REQUIREMENTS (RULE 305)
(M32 595 Pad)

Re: Well Name – Milk Cabin OM 12C M32 595, 12B, 13A, 12D, 12A, 11B, 11D, 13B, 14B, 13C, 13D, 14D– located in the SWSW of Section 32, 5S 95W, Garfield County, Colorado

In accordance with the Colorado Oil and Gas Conservation Commission for Notices of Oil and Gas Operations, Rule 305, the following information is required to be provided:

- Operations on the above referenced wells are estimated to commence on October 15, 2010.
- The operator will be: Berry Petroleum Company
1999 Broadway, Suite # 3700
Denver, Colorado 80202
(303) 999-4400
- You may contact: Patsy Branson, Senior Landman at (303) 633-4246 if you have any questions regarding this notice.

Milk Cabin OM 12B M32 595 – API # 05-045-13258-00

The legal description of the lands upon which operations will be conducted are:

Old

Surface Hole: 585' FSL and 1189' FWL, Sec. 32, T5S, R95W

Bottom Hole: 2,211' FSL and 330' FWL, Sec. 32, T5S, R95W

NEW

Surface Hole: 577' FSL and 1,195' FWL, Sec. 32, T5S, R95W

Bottom Hole: 2,034' FSL and 494' FWL, Sec. 32, T5S, R95W

Garfield County, Colorado.

Milk Cabin OM 12D M32 595 – API # 05-045-13259-00

The legal description of the lands upon which operations will be conducted are:

Old

Surface Hole: 573' FSL and 1,199' FWL, Sec. 32, T5S, R95W

Bottom Hole: 1,675' FSL and 1,000' FWL, Sec. 32, T5S, R95W

NEW

Surface Hole: 561' FSL and 1,208' FWL, Sec. 32, T5S, R95W

Bottom Hole: 1,756' FSL and 770' FWL, Sec. 32, T5S, R95W

Garfield County, Colorado.

Milk Cabin OM 11B M32 595 – API # 05-045-13262-00

The legal description of the lands upon which operations will be conducted are:

Old

Surface Hole: 561' FSL and 1,208' FWL, Sec 32, T5S, R95W

Bottom Hole: 2,510' FSL and 1,650' FWL, Sec 32, T5S, R95W

NEW

Surface Hole: 546' FSL and 1,220' FWL, Sec 32, T5S, R95W

Bottom Hole: 2,213' FSL and 1,744' FWL, Sec 32, T5S, R95W

Garfield County, Colorado.

Milk Cabin OM 14B M32 595 – API # 05-045-13263-00

The legal description of the lands upon which operations will be conducted are:

OLD

Surface Hole: 549' FSL and 1,217' FWL, Sec 32, T5S, R95W

Bottom Hole: 1,195' FSL and 1,660' FWL, Sec 32, T5S, R95W

NEW

Surface Hole: 522' FSL and 1,239' FWL, Sec 32, T5S, R95W

Bottom Hole: 1,036' FSL and 1,992' FWL, Sec 32, T5S, R95W

Garfield County, Colorado.

Milk Cabin OM 11D M32 595 – API # 05-045-13264-00

The legal description of the lands upon which operations will be conducted are:

OLD

Surface Hole: 538' FSL and 1,226' FWL, Sec 32, T5S, R95W

Bottom Hole: 1,830' FSL and 2,330' FWL, Sec 32, T5S, R95W

NEW

Bottom Hole: 1,330' FSL and 1,930' FWL, Sec 32, T5S, R95W

Garfield County, Colorado.

Milk Cabin OM 13B M32 595 – API # 05-045-13260-00

The legal description of the lands upon which operations will be conducted are:

OLD

Surface Hole: 526' FSL and 1,236' FWL, Sec 32, T5S, R95W

Bottom Hole: 920' FSL and 310' FWL, Sec 32, T5S, R95W

NEW

Surface Hole: 530' FSL and 1,232' FWL, Sec 32, T5S, R95W

Bottom Hole: 824' FSL and 560' FWL, Sec 32, T5S, R95W

Garfield County, Colorado.

Milk Cabin OM 13D M32 595 – API # 05-045-13257-00

The legal description of the lands upon which operations will be conducted are:

OLD

Surface Hole: 514' FSL and 1,245' FWL, Sec 32, T5S, R95W

Bottom Hole: 250' FSL and 1,040' FWL, Sec 32, T5S, R95W

NEW

Surface Hole: 506' FSL and 1,251' FWL, Sec 32, T5S, R95W

Bottom Hole: 183' FSL and 734' FWL, Sec 32, T5S, R95W

Garfield County, Colorado.

Milk Cabin OM 14D M32 595 – API # 05-045-13261-00

The legal description of the lands upon which operations will be conducted are:

OLD

Surface Hole: 502' FSL and 1,254' FWL, Sec 32, T5S, R95W

Bottom Hole: 430' FSL and 2,300' FWL, Sec 32, T5S, R95W

NEW

Surface Hole: 498' FSL and 1,257' FWL, Sec 32, T5S, R95W

Bottom Hole: 411' FSL and 2148' FWL, Sec 32, T5S, R95W

Garfield County, Colorado.

NEW WELLS ADDED TO PAD

Milk Cabin OM 12C M32 595

The legal description of the lands upon which operations will be conducted are:

Surface Hole: 585' FSL and 1,189' FWL, Sec 32, T5S, R95W

Bottom Hole: 1,424' FSL and 467' FWL, Sec 32, T5S, R95W

Garfield County, Colorado.

Milk Cabin OM 12A M32 595

The legal description of the lands upon which operations will be conducted are:

Surface Hole: 553' FSL and 1,214' FWL, Sec 32, T5S, R95W

Bottom Hole: 2,409' FSL and 874' FWL, Sec 32, T5S, R95W

Garfield County, Colorado.

Milk Cabin OM 13A M32 595

The legal description of the lands upon which operations will be conducted are:

Surface Hole: 569' FSL and 1,202' FWL, Sec 32, T5S, R95W

Bottom Hole: 1,118' FSL and 508' FWL, Sec 32, T5S, R95W

Garfield County, Colorado.

Milk Cabin OM 13C M32 595

The legal description of the lands upon which operations will be conducted are:

Surface Hole: 514' FSL and 1,245' FWL, Sec 32, T5S, R95W

Bottom Hole: 496' FSL and 575' FWL, Sec 32, T5S, R95W

Garfield County, Colorado.

- The surface owner has the responsibility for notifying any affected tenant of the proposed operations.
- A brochure describing surface owner rights is available upon request from:

Colorado Oil and Gas Conservation Commission
1120 Lincoln Street
Suite 801
Denver, Co 80203

By signing below, the surface owner waives the above notification requirements of Rule 305.

Encana Oil & Gas (U.S.A.) Inc.

By: _____

Printed Name: _____

Title: _____

Date: _____

SURFACE OWNER CONSULTATION (RULE 306)
(M32 595 Pad)

Berry Petroleum Company confirms that the Surface Owner Consultation requirements of Rule 306 have been completed or waived for the following proposed well pad.


Well Names – Milk Cabin OM 12C M32 595, 12B, 13A, 12D, 12A, 11B, 11D, 13B, 14B, 13C, 13D , 14D to be drilled from well pad located in the SWSW of Section 32, Township 5 South, Range 95 West, Garfield County, Colorado.

Road Description: Existing roadway use and new construction as required for access was previously agreed upon by all parties.

Berry Petroleum Company



Patsy Branson
Senior Landman



Date

OLD

Well location, MILK CABIN OM12B M32 595,
located as shown in the SW 1/4 SW 1/4 of
Section 32, T5S, R95W, 6th P.M., Garfield
County, Colorado.

SPOT ELEVATION AT THE NORTHWEST CORNER OF SECTION 30, T5S, R95W, 6th P.M. TAKEN FROM THE FORKED GULCH QUADRANGLE, COLORADO, GARFIELD COUNTY, 7.5 MINUTE SERIES (TOPOGRAPHICAL MAP) PUBLISHED BY THE UNITED STATES DEPARTMENT OF THE INTERIOR, GEOLOGICAL SURVEY. SAID ELEVATION IS MARKED AS BEING 5986 FEET.

BASIS OF BEARINGS IS A G.P.S. OBSERVATION.



THE ABOVE NAMED PERSON RECEIVED FROM
 THE DIRECTOR OF THE BUREAU OF INVESTIGATION
 A PASSPORT UNDER NO. 14932
 DUE APRIL 1941 AND OBJECT NO 1
 BELIEVE
 44-38861-578
 INDEXED
 SERIALIZED
 FILED
 APR 11 1941
 FBI - NEW YORK
 STAMP: OFFICE OF THE DIRECTOR, FBI
 STAMP: APR 11 1941

86 SOUTH 200 EAST - VERNAL, UTAH 84078

SCALE	DATE SURVEYED:	DATE DRAWN:
1" = 1000'	08-31-06	08-31-06

WARM

BEERY BESTMAN FILM SOCIETY



PDOP = 2.0

NEU

T5S, R95W, 6th P.M.

BERRY PETROLEUM COMPANY

Well location, MILK CABIN OM12B M32 595, located as shown in the SW 1/4 SW 1/4 of Section 32, T5S, R95W, 6th P.M., Garfield County, Colorado.

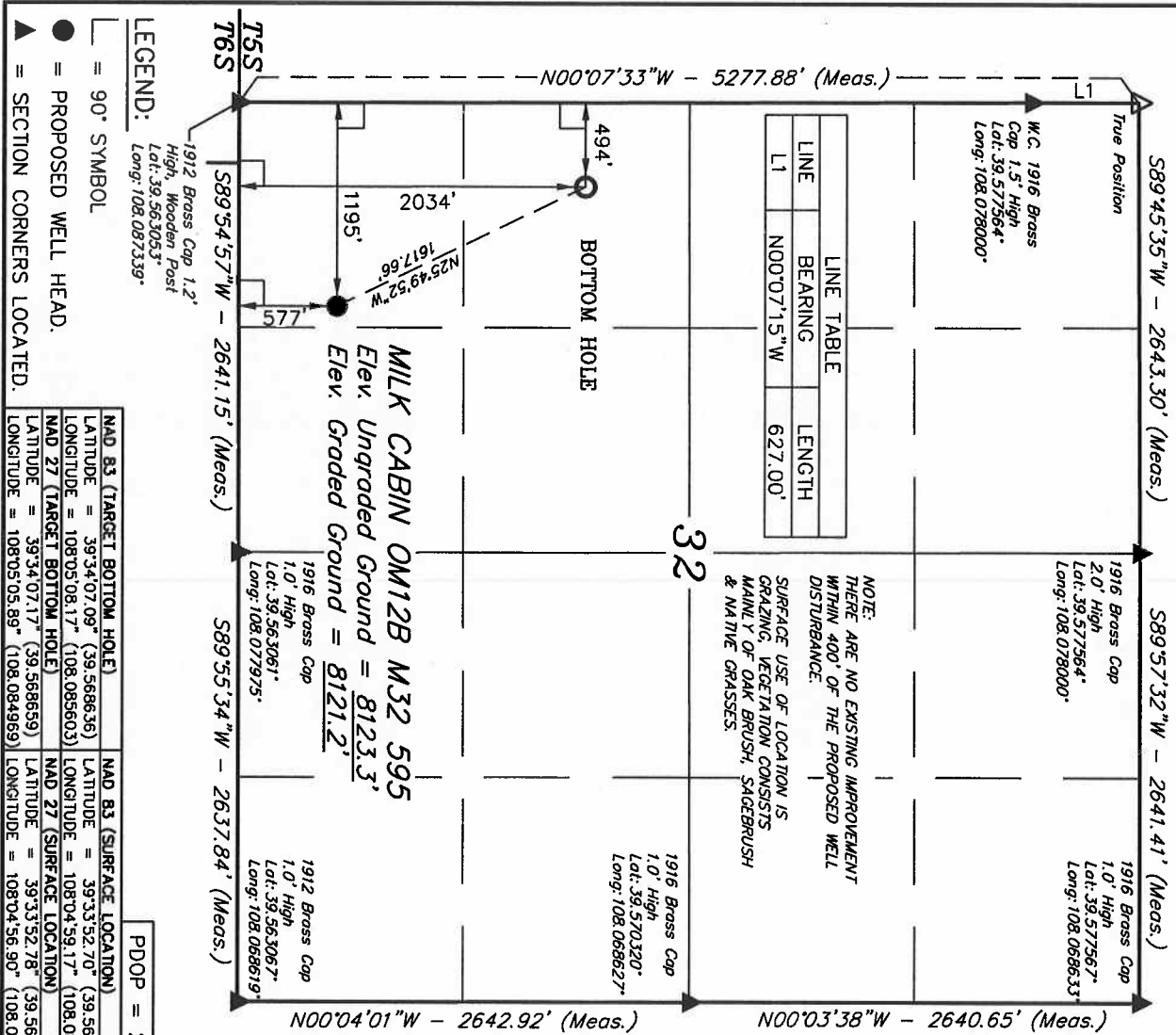
BASIS OF ELEVATION

SPOT ELEVATION AT THE NORTHWEST CORNER OF SECTION 30, T5S, R95W, 6th P.M. TAKEN FROM THE FORKED GULCH QUADRANGLE, COLORADO, GARFIELD COUNTY, 7.5 MINUTE SERIES (TOPOGRAPHICAL MAP) PUBLISHED BY THE UNITED STATES DEPARTMENT OF THE INTERIOR, GEOLOGICAL SURVEY. SAID ELEVATION IS MARKED AS BEING 5966 FEET.

BASIS OF BEARINGS

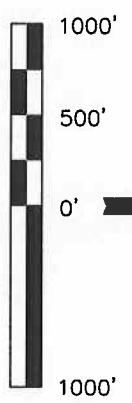
BASIS OF BEARINGS IS A G.P.S. OBSERVATION.

Sheet 1d of 12



LINE	BEARING	LENGTH
L1	N00°07'15\"W	627.00'

NOTE:
THERE ARE NO EXISTING IMPROVEMENT WITHIN 400' OF THE PROPOSED WELL DISTURBANCE.
SURFACE USE OF LOCATION IS GRAZING. VEGETATION CONSISTS MAINLY OF OAK BRUSH, SAGEBRUSH & NATIVE GRASSES.



SCALE

CERTIFICATE

THIS IS TO CERTIFY THAT THE ABOVE PLAT WAS PREPARED FROM FIELD NOTES OF ACTUAL SURVEYS MADE BY ME OR UNDER MY SUPERVISION AND THAT THE SAME ARE TRUE AND CORRECT TO THE BEST OF MY KNOWLEDGE AND BELIEF.

Revised: 06-08-10 D.R.B.

UINTAH ENGINEERING & LAND SURVEYING

85 SOUTH 200 EAST - VERNAL, UTAH 84078
(435) 789-1017

PDOP = 2.1

LEGEND:

- = 90° SYMBOL
- = PROPOSED WELL HEAD.
- ▲ = SECTION CORNERS LOCATED.

1912 Brass Cap 1.2\"
High, Wooden Post
Lat: 39.563053\"
Long: 108.087339\"

1916 Brass Cap
1.0\" High
Lat: 39.577564\"
Long: 108.078000\"

1916 Brass Cap
1.0\" High
Lat: 39.577567\"
Long: 108.068633\"

1916 Brass Cap
1.0\" High
Lat: 39.570320\"
Long: 108.068627\"

1912 Brass Cap
1.0\" High
Lat: 39.563067\"
Long: 108.077975\"

1912 Brass Cap
1.0\" High
Lat: 39.563067\"
Long: 108.086619\"

1912 Brass Cap
1.0\" High
Lat: 39.563067\"
Long: 108.086619\"

1912 Brass Cap
1.0\" High
Lat: 39.563067\"
Long: 108.086619\"

1912 Brass Cap
1.0\" High
Lat: 39.563067\"
Long: 108.086619\"

1912 Brass Cap
1.0\" High
Lat: 39.563067\"
Long: 108.086619\"

1912 Brass Cap
1.0\" High
Lat: 39.563067\"
Long: 108.086619\"

1912 Brass Cap
1.0\" High
Lat: 39.563067\"
Long: 108.086619\"

1912 Brass Cap
1.0\" High
Lat: 39.563067\"
Long: 108.086619\"

1912 Brass Cap
1.0\" High
Lat: 39.563067\"
Long: 108.086619\"

1912 Brass Cap
1.0\" High
Lat: 39.563067\"
Long: 108.086619\"

1912 Brass Cap
1.0\" High
Lat: 39.563067\"
Long: 108.086619\"

1912 Brass Cap
1.0\" High
Lat: 39.563067\"
Long: 108.086619\"

1912 Brass Cap
1.0\" High
Lat: 39.563067\"
Long: 108.086619\"

1912 Brass Cap
1.0\" High
Lat: 39.563067\"
Long: 108.086619\"

1912 Brass Cap
1.0\" High
Lat: 39.563067\"
Long: 108.086619\"

1912 Brass Cap
1.0\" High
Lat: 39.563067\"
Long: 108.086619\"

1912 Brass Cap
1.0\" High
Lat: 39.563067\"
Long: 108.086619\"

1912 Brass Cap
1.0\" High
Lat: 39.563067\"
Long: 108.086619\"

1912 Brass Cap
1.0\" High
Lat: 39.563067\"
Long: 108.086619\"

1912 Brass Cap
1.0\" High
Lat: 39.563067\"
Long: 108.086619\"

1912 Brass Cap
1.0\" High
Lat: 39.563067\"
Long: 108.086619\"

1912 Brass Cap
1.0\" High
Lat: 39.563067\"
Long: 108.086619\"

1912 Brass Cap
1.0\" High
Lat: 39.563067\"
Long: 108.086619\"

1912 Brass Cap
1.0\" High
Lat: 39.563067\"
Long: 108.086619\"

1912 Brass Cap
1.0\" High
Lat: 39.563067\"
Long: 108.086619\"

1912 Brass Cap
1.0\" High
Lat: 39.563067\"
Long: 108.086619\"

1912 Brass Cap
1.0\" High
Lat: 39.563067\"
Long: 108.086619\"

1912 Brass Cap
1.0\" High
Lat: 39.563067\"
Long: 108.086619\"

1912 Brass Cap
1.0\" High
Lat: 39.563067\"
Long: 108.086619\"

1912 Brass Cap
1.0\" High
Lat: 39.563067\"
Long: 108.086619\"

1912 Brass Cap
1.0\" High
Lat: 39.563067\"
Long: 108.086619\"

1912 Brass Cap
1.0\" High
Lat: 39.563067\"
Long: 108.086619\"

1912 Brass Cap
1.0\" High
Lat: 39.563067\"
Long: 108.086619\"

1912 Brass Cap
1.0\" High
Lat: 39.563067\"
Long: 108.086619\"

1912 Brass Cap
1.0\" High
Lat: 39.563067\"
Long: 108.086619\"

1912 Brass Cap
1.0\" High
Lat: 39.563067\"
Long: 108.086619\"

1912 Brass Cap
1.0\" High
Lat: 39.563067\"
Long: 108.086619\"

NAD 83 (TARGET BOTTOM HOLE)	NAD 83 (SURFACE LOCATION)
LATITUDE = 39°34'07.09\" (39.568636)	LATITUDE = 39°33'52.70\" (39.564639)
LONGITUDE = 108°05'08.17\" (108.085603)	LONGITUDE = 108°04'59.17\" (108.083103)

NAD 27 (TARGET BOTTOM HOLE)	NAD 27 (SURFACE LOCATION)
LATITUDE = 39°34'07.17\" (39.568659)	LATITUDE = 39°33'52.78\" (39.564661)
LONGITUDE = 108°05'05.89\" (108.084969)	LONGITUDE = 108°04'56.90\" (108.082472)

SCALE	DATE SURVEYED:	DATE DRAWN:
1\" = 1000'	08-31-06	09-12-06

PARTY	REFERENCES
G.O. B.S. D.R.B.	G.L.O. PLAT
WEATHER	FILE
WARM	BERRY PETROLEUM COMPANY

OLD

T55, R95W, 6th P.M.

BERRY PETROLEUM COMPANY

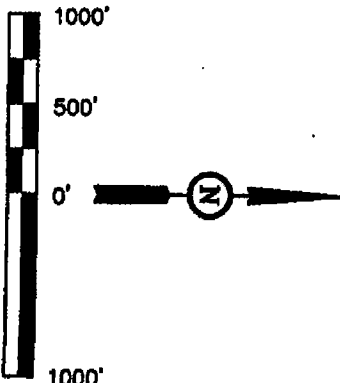
Well location, MILK CABIN OM12D M32 595, located as shown in the SW 1/4 SW 1/4 of Section 32, T55, R95W, 6th P.M., Garfield County, Colorado.

BASIS OF ELEVATION

SPOT ELEVATION AT THE NORTHWEST CORNER OF SECTION 30, T55, R95W, 6th P.M. TAKEN FROM THE FORKED GULCH QUADRANGLE, COLORADO, GARFIELD COUNTY, 7.5 MINUTE SERIES (TOPOGRAPHICAL MAP) PUBLISHED BY THE UNITED STATES DEPARTMENT OF THE INTERIOR, GEOLOGICAL SURVEY. SAID ELEVATION IS MARKED AS BEING 5966 FEET.

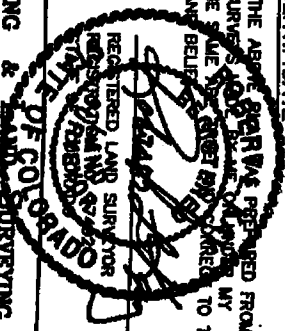
BASIS OF BEARINGS

BASIS OF BEARINGS IS A G.P.S. OBSERVATION.

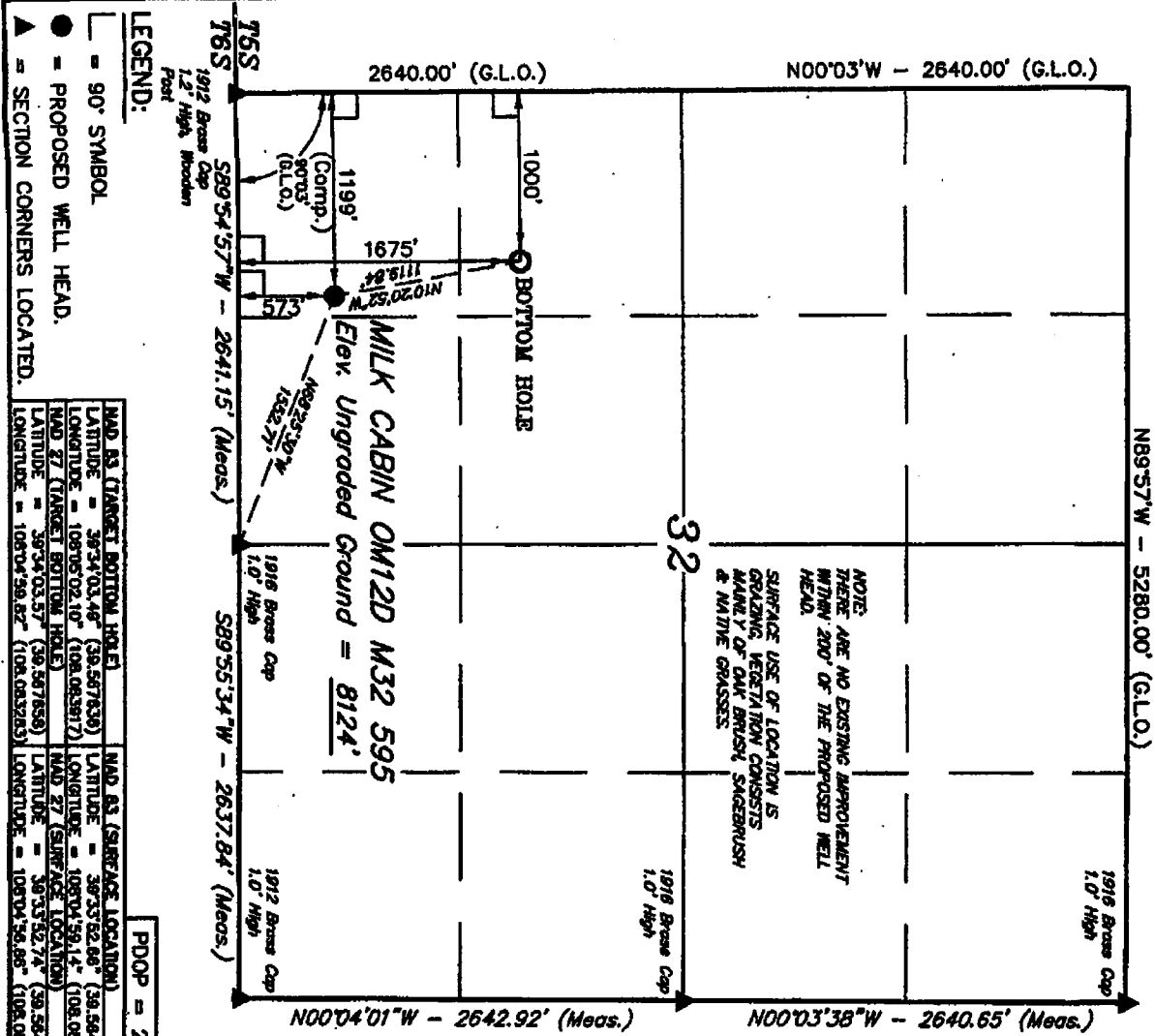


CERTIFICATE

THIS IS TO CERTIFY THAT THE ABOVE SURVEY WAS PREPARED FROM FIELD NOTES OF ACTUAL SURVEY AND THAT THE SAME ARE CORRECT TO THE BEST OF MY KNOWLEDGE AND BELIEF.



UTAH ENGINEERING & SURVEYING
85 SOUTH 200 EAST - VERNAL, UTAH 84078
(435) 789-1017



LEGEND:

- 90° SYMBOL
- PROPOSED WELL HEAD.
- ▲ SECTION CORNERS LOCATED.

MAD 83 (TARGET BOTTOM HOLE)		MAD 83 (SURFACE LOCATION)	
LATITUDE = 39°34'03.48" (39.567833)	LATITUDE = 39°33'52.86" (39.564628)	LATITUDE = 39°34'03.48" (39.567833)	LATITUDE = 39°33'52.86" (39.564628)
LONGITUDE = 108°05'02.10" (108.083917)	LONGITUDE = 108°04'59.14" (108.083094)	LONGITUDE = 108°05'02.10" (108.083917)	LONGITUDE = 108°04'59.14" (108.083094)
MAD 87 (TARGET BOTTOM HOLE)		MAD 87 (SURFACE LOCATION)	
LATITUDE = 39°34'03.57" (39.567858)	LATITUDE = 39°33'52.74" (39.564630)	LATITUDE = 39°34'03.57" (39.567858)	LATITUDE = 39°33'52.74" (39.564630)
LONGITUDE = 108°04'59.87" (108.083283)	LONGITUDE = 108°04'59.85" (108.083240)	LONGITUDE = 108°04'59.87" (108.083283)	LONGITUDE = 108°04'59.85" (108.083240)

PDOP = 2.1

SCALE		DATE SURVEYED:		DATE DRAWN:	
1" = 1000'		08-31-06		09-12-06	
PARTY		G.O. B.S. D.R.B.		REFERENCES	
WEATHER		WARM		G.L.O. PLAT	
FILE		BERRY PETROLEUM COMPANY			



HEIN

Well location, MILK CABIN OM12D M32 595,
located as shown in the SW 1/4 SW 1/4 of
Section 32, T5S, R95W, 6th P.M., Garfield
County, Colorado.

SPOT ELEVATION AT THE NORTHWEST CORNER OF SECTION 30, T5S, R9SW, 6th P.M. TAKEN FROM THE FORKED GULCH QUADRANGLE, COLORADO, GARFIELD COUNTY, 7.5 MINUTE SERIES (TOPOGRAPHICAL MAP) PUBLISHED BY THE UNITED STATES DEPARTMENT OF THE INTERIOR, GEOLOGICAL SURVEY. SAID ELEVATION IS MARKED AS BEING 5966 FEET.

BASIS OF BEARINGS IS A G.P.S. OBSERVATION.



Revised: 06-14-10 D.R.B.
Revised: 06-08-10 D.R.B.

REGISTERED LAND SURVEYOR
REGISTRATION NO. 17492
STATE OF COLORADO

85 SOUTH 200 EAST - VERNAL, UTAH 84078
(435) 789-1017

SCALE 1" = 1000'	DATE SURVEYED: 08-31-06	DATE DRAWN: 09-12-06
---------------------	----------------------------	-------------------------

PART I		REFERENCES
G.O.	B.S.	D.R.B.
		G.L.O. PLAT

WARM
BERRY PETROLEUM COMPANY



NOTE: THERE ARE NO EXISTING IMPROVEMENTS WITHIN 400' OF THE PROPOSED WELL DISTURBANCE.

MILK CABIN OM12D M32 595
Elev. Ungraded Ground = 8124.3'
Elev. Graded Ground = 8121.2'

LEGEND:
Lat: 39.563053°
Long: 108.087339°

L = 90° SYMBOL

● = PROPOSED WELL HEAD.

▲ = SECTION CORNERS LOCATED.



01307767

OLD

T5S, R95W, 6th P.M.

BERRY PETROLEUM COMPANY

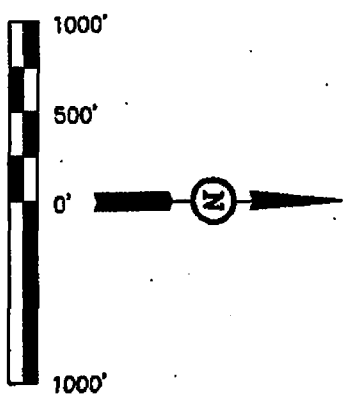
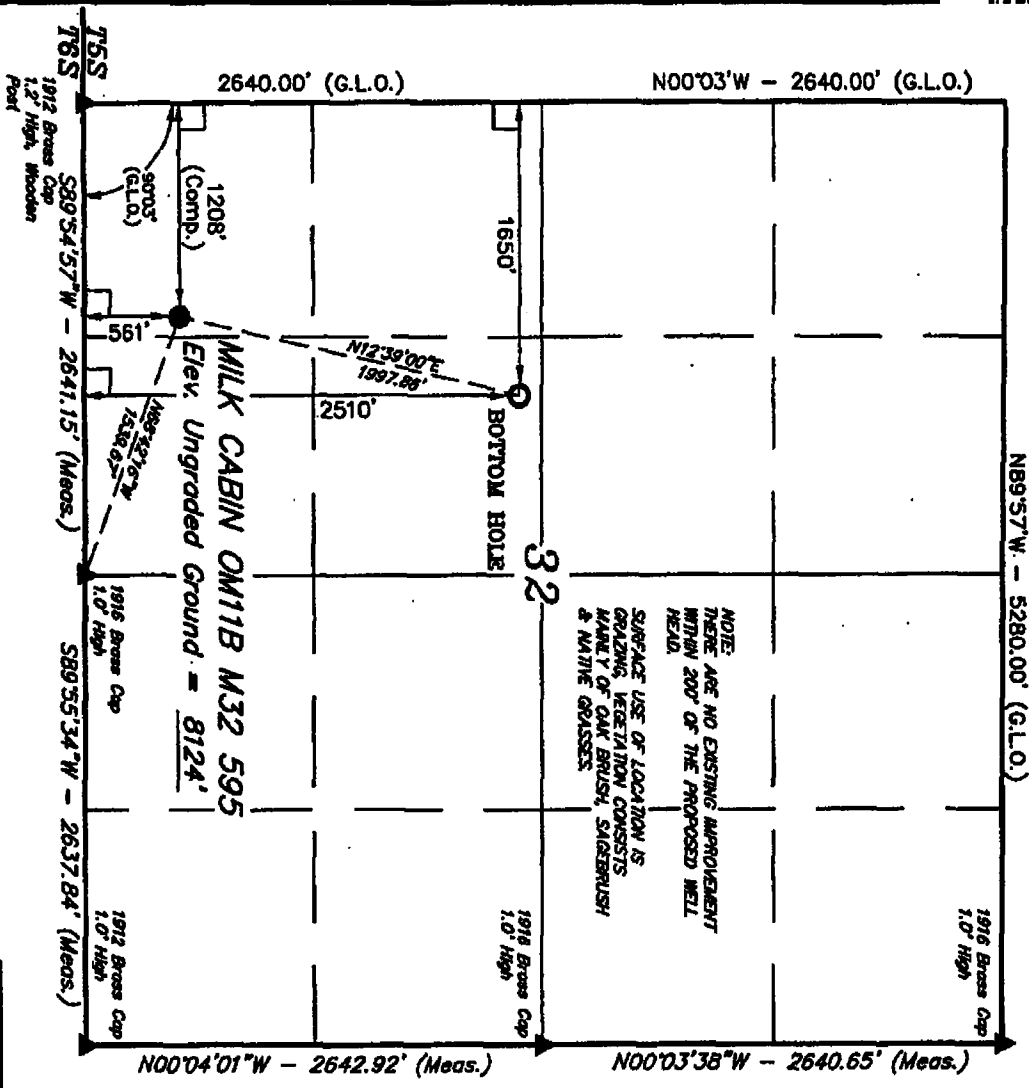
Well location, MILK CABIN OM11B M32 595, located as shown in the SW 1/4 SW 1/4 of Section 32, T5S, R95W, 6th P.M., Garfield County, Colorado.

BASIS OF ELEVATION

SPOT ELEVATION AT THE NORTHWEST CORNER OF SECTION 30, T5S, R95W, 6th P.M. TAKEN FROM THE FORKED GULCH QUADRANGLE, COLORADO, GARFIELD COUNTY, 7.5 MINUTE SERIES (TOPOGRAPHICAL MAP) PUBLISHED BY THE UNITED STATES DEPARTMENT OF THE INTERIOR, GEOLOGICAL SURVEY. SAID ELEVATION IS MARKED AS BEING 5966 FEET.

BASIS OF BEARINGS

BASIS OF BEARINGS IS A G.P.S. OBSERVATION.



THIS IS TO CERTIFY THAT THE SURVEY WAS MADE FROM FIELD NOTES OF ACTUAL SURVEY UNDER MY PERSONAL SUPERVISION AND THAT THE SAME ARE TRUE AND CORRECT TO THE BEST OF MY KNOWLEDGE AND BELIEF.

CERTIFICATE
ROBERT L. KERR
REGISTERED LAND SURVEYOR
STATE OF COLORADO
15492

UNITAH ENGINEERING & LAND SURVEYING
86 SOUTH 200 EAST - VERNAL, UTAH 84078
(435) 789-1017

SCALE 1" = 1000'	DATE SURVEYED: 08-31-06	DATE DRAWN: 09-12-06
PARTY G.O. B.S. D.R.B.	REFERENCES G.L.O. PLAT	FILE
WEATHER WARM	BERRY PETROLEUM COMPANY	

= 90° SYMBOL = PROPOSED WELL HEAD. = SECTION CORNERS LOCATED.	NAD 83 (TARGET BOTTOM HOLE) LATITUDE = 39°34'11.83" (39.56986) LONGITUDE = 108°04'54.13" (108.081703) NAD 27 (TARGET BOTTOM HOLE) LATITUDE = 39°34'12.07" (39.570003) LONGITUDE = 108°04'51.85" (108.081089)	NAD 83 (SURFACE LOCATION) LATITUDE = 39°33'52.56" (39.564897) LONGITUDE = 108°04'59.07" (108.083281) NAD 27 (SURFACE LOCATION) LATITUDE = 39°33'52.63" (39.564619) LONGITUDE = 108°04'59.74" (108.083428)
---	---	--

PDOP = 2.1

NEW

T5S, R95W, 6th P.M.

BERRY PETROLEUM COMPANY
Well location, MILK CABIN OM11B M32 595,
located as shown in the SW 1/4 SW 1/4 of
Section 32, T5S, R95W, 6th P.M., Garfield
County, Colorado.

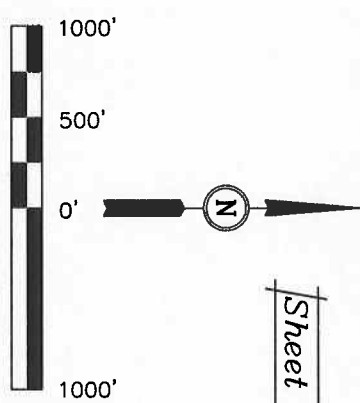
BASIS OF ELEVATION

SPOT ELEVATION AT THE NORTHWEST CORNER OF SECTION
30, T5S, R95W, 6th P.M. TAKEN FROM THE FORKED GULCH
QUADRANGLE, COLORADO, GARFIELD COUNTY, 7.5 MINUTE
SERIES (TOPOGRAPHICAL MAP) PUBLISHED BY THE UNITED
STATES DEPARTMENT OF THE INTERIOR, GEOLOGICAL SURVEY.
SAID ELEVATION IS MARKED AS BEING 5966 FEET.

BASIS OF BEARINGS

BASIS OF BEARINGS IS A G.P.S. OBSERVATION.

Sheet 1a of 12



CERTIFICATE

THIS IS TO CERTIFY THAT THE ABOVE PLAT WAS PREPARED FROM
FIELD NOTES OF ACTUAL SURVEYS MADE BY ME OR UNDER MY
SUPERVISION AND THAT THE SAME ARE TRUE AND CORRECT TO THE
BEST OF MY KNOWLEDGE AND BELIEF.

REGISTERED LAND SURVEYOR
REGISTRATION NO. 11500
STATE OF COLORADO

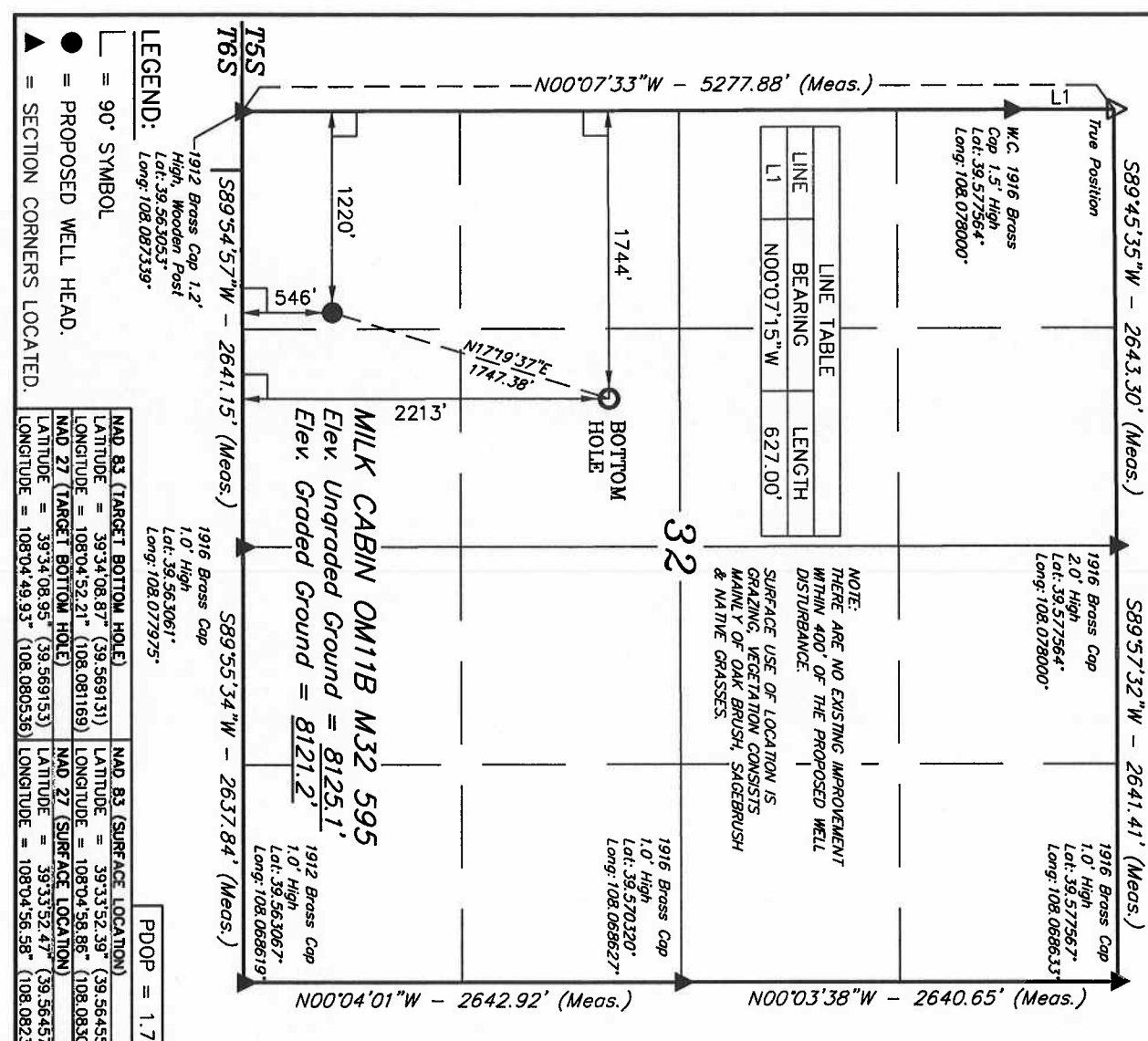
Revised: 06-14-10 D.R.B.
Revised: 06-08-10 D.R.B.

UNTAH ENGINEERING & LAND SURVEYING
85 SOUTH 200 EAST - VERNAL, UTAH 84078
(435) 789-1017

SCALE	DATE SURVEYED:	DATE DRAWN:
1" = 1000'	08-31-06	09-12-06

PARTY	REFERENCES
G.O. B.S. D.R.B.	G.L.O. PLAT

WEATHER	FILE
WARM	BERRY PETROLEUM COMPANY



T5S, R95W, 6th P.M.

N89°57'W - 5280.00' (G.L.O.)

N00°03'W - 2640.00' (G.L.O.)

2640.00' (G.L.O.)

T5S
1912 Brass Cap
1.2' High, Wooden Post

1916 Brass Cap
1.0' High

1912 Brass Cap
1.0' High

LEGEND:

● = 90° SYMBOL

● = PROPOSED WELL HEAD.

▲ = SECTION CORNERS LOCATED.

NOTE:
THERE ARE NO EXISTING IMPROVEMENTS
WITHIN 200' OF THE PROPOSED WELL
HEAD.
SURFACE USE OF LOCATION IS
GRAZING, VEGETATION CONSISTS
MAINLY OF OAK BRUSH, SAGEBRUSH
& NATIVE GRASSES.

LINE TABLE		
LINE	BEARING	LENGTH
L1	N34°20'16"E	782.54'

MILK CABIN OM14B M32 595
Elev. Ungraded Ground = 8125'

N00°04'01"W - 2642.92' (Meas.)

N00°03'38"W - 2640.65' (Meas.)

PDOP = 1.5

NAD 83 (TARGET BOTTOM HOLE)		NAD 83 (SURFACE LOCATION)	
LATITUDE = 39°33'26.84" (39.556372)	LATITUDE = 39°33'52.45" (39.564944)	LATITUDE = 39°33'52.45" (39.564944)	LATITUDE = 39°33'52.45" (39.564944)
LONGITUDE = 108°04'53.49" (108.081525)	LONGITUDE = 108°04'58.80" (108.083028)	LONGITUDE = 108°04'58.80" (108.083028)	LONGITUDE = 108°04'58.80" (108.083028)
NAD 27 (TARGET BOTTOM HOLE)		NAD 27 (SURFACE LOCATION)	
LATITUDE = 39°33'56.03" (39.565307)	LATITUDE = 39°33'52.51" (39.564566)	LATITUDE = 39°33'52.51" (39.564566)	LATITUDE = 39°33'52.51" (39.564566)
LONGITUDE = 108°04'51.21" (108.082822)	LONGITUDE = 108°04'56.82" (108.082284)	LONGITUDE = 108°04'56.82" (108.082284)	LONGITUDE = 108°04'56.82" (108.082284)

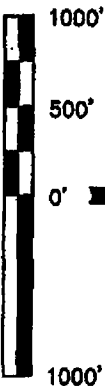
BERRY PETROLEUM COMPANY
Well location, MILK CABIN OM14B M32 595,
located as shown in the SW 1/4 SW 1/4 of
Section 32, T5S, R95W, 6th P.M., Garfield
County, Colorado.

BASIS OF ELEVATION

SPOT ELEVATION AT THE NORTHWEST CORNER OF SECTION
30, T5S, R95W, 6th P.M. TAKEN FROM THE FORKED GULCH
QUADRANGLE, COLORADO, GARFIELD COUNTY, 7.5 MINUTE
SERIES (TOPOGRAPHICAL MAP) PUBLISHED BY THE UNITED
STATES DEPARTMENT OF THE INTERIOR, GEOLOGICAL SURVEY.
SAID ELEVATION IS MARKED AS BEING 5966 FEET.

BASIS OF BEARINGS

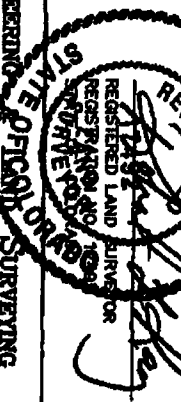
BASIS OF BEARINGS IS A G.P.S. OBSERVATION.



SCALE

CERTIFICATE

THIS IS TO CERTIFY THAT THE ABOVE PLAT WAS PREPARED FROM
FIELD NOTES OF ACTUAL SURVEY MADE BY ME, UNDER MY
SUPERVISION AND THAT THE SAME ARE TRUE AND CORRECT TO THE
BEST OF MY KNOWLEDGE AND BELIEF.



UTAH ENGINEERING & SURVEYING
86 SOUTH 200 EAST - VERNAL, UTAH 84078
(435) 789-1017

SCALE
1" = 1000'

DATE SURVEYED: 08-31-06 DATE DRAWN: 09-12-06

PARTY
G.O. B.S. D.R.B. REFERENCES
G.L.O. PLAT

WEATHER
WARM FILE
BERRY PETROLEUM COMPANY

01307760



12/11/20

Well location, MILK CABIN OM14B M32 595,
located as shown in the SW 1/4 SW 1/4 of
Section 32, T5S, R95W, 6th P.M., Garfield
County, Colorado.

SPOT ELEVATION AT THE NORTHWEST CORNER OF SECTION 30, T5S, R95W, 6th P.M. TAKEN FROM THE FORKED GULCH QUADRANGLE, COLORADO, GARFIELD COUNTY, 7.5 MINUTE SERIES (TOPOGRAPHICAL MAP) PUBLISHED BY THE UNITED STATES DEPARTMENT OF THE INTERIOR, GEOLOGICAL SURVEY. SAID ELEVATION IS MARKED AS BEING 5966 FEET.

BASIS OF BEARINGS IS A G.P.S. OBSERVATION.

LINE TABLE		
LINE	BEARING	LENGTH
L1	N00°07'15"W	627.00'

32

CERTIFICATE

Revised: 06-14-10 D.R.B.
Revised: 06-08-10 D.R.B.

ABOVE BEAT WAS PREPARED FROM
 THIS MADE BY ME ONE LINE IN MY
 NAME ARE TRUE AND CORRECT TO THE
 BELIEF

John [Signature]

REGISTERED AND SIGNED
 REGISTRY NOW IN USE
 STATE OF COLORADO

CONFIDENTIAL

85 SOUTH 200 EAST - VERNAL, UTAH 84078

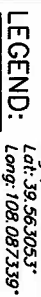
SCALE 1" = 1000'	DATE SURVEYED: 08-31-06	DATE DRAWN: 09-12-06
---------------------	----------------------------	-------------------------

PARTY	G.O.	B.S.	D.R.B.

REFERENCES

G.L.O. PLAT

BERRY PETROLEUM COMPANY



SYMBOL

PROPOSED WELL HEAD.

▲ = SECTION CORNERS LOCATED.



01307753

T5S, R95W, 6th P.M.

N89°57'W - 5280.00' (G.L.O.)

N00°03'W - 2640.00' (G.L.O.)

2640.00' (G.L.O.)

1912 Brass Cap
1.2' High, Wooden
Post

LEGEND:

● = 90° SYMBOL

● = PROPOSED WELL HEAD.

▲ = SECTION CORNERS LOCATED.

MAD 63 (TARGET BOTTOM HOLE)		MAD 63 (SURFACE LOCATION)	
LATITUDE = 39°34'03.42" (39.566172)	LATITUDE = 39°33'52.51" (39.56453)		
LONGITUDE = 108°04'45.15" (108.079217)	LONGITUDE = 108°04'56.78" (108.082994)		
MAD 27 (TARGET BOTTOM HOLE)		MAD 27 (SURFACE LOCATION)	
LATITUDE = 39°34'03.80" (39.566194)	LATITUDE = 39°33'52.39" (39.56453)		
LONGITUDE = 108°04'42.97" (108.078586)	LONGITUDE = 108°04'56.50" (108.082381)		

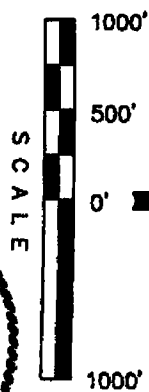
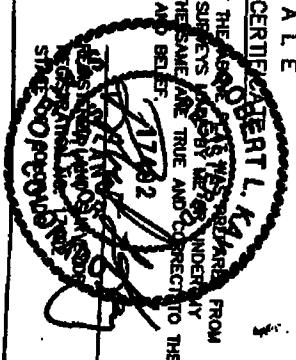
PDOP = 2.3

SCALE 1" = 1000'

PARTY	DATE SURVEYED	DATE DRAWN
G.O. B.S. D.R.B.	08-31-06	09-12-06
WEATHER	FILE	
WARM	BERRY PETROLEUM COMPANY	

UNTAR ENGINEERING & LAND SURVEYING
86 SOUTH 200 EAST - VERRIL, UTAH 84078
(435) 789-1017

THIS IS TO CERTIFY THAT THE ABOVE IS A TRUE AND CORRECT COPY OF THE ORIGINAL SURVEY RECORDS AND THAT THE SAME ARE TRUE AND CORRECT TO THE BEST OF MY KNOWLEDGE AND BELIEF.



NOTE: THERE ARE NO EXISTING IMPROVEMENT WITHIN 200' OF THE PROPOSED WELL HEAD.
SURFACE USE OF LOCATION IS GRAZING. VEGETATION CONSISTS MAINLY OF OAK BRUSH, SAIGERBUSH & NATIVE GRASSES.

BASIS OF BEARINGS IS A G.P.S. OBSERVATION.

BASIS OF BEARINGS

SPOT ELEVATION AT THE NORTHWEST CORNER OF SECTION 30, T5S, R95W, 6th P.M. TAKEN FROM THE FORKED GULCH QUADRANGLE, COLORADO, GARFIELD COUNTY, 7.5 MINUTE SERIES (TOPOGRAPHICAL MAP) PUBLISHED BY THE UNITED STATES DEPARTMENT OF THE INTERIOR, GEOLOGICAL SURVEY. SAID ELEVATION IS MARKED AS BEING 5966 FEET.

BASIS OF ELEVATION

BERRY PETROLEUM COMPANY
Well location, MILK CABIN OM11D M32 595, located as shown in the SW 1/4 SW 1/4 of Section 32, T5S, R95W, 6th P.M., Garfield County, Colorado.

OLD

NEW

T55, R95W, 6th P.M.

BERRY PETROLEUM COMPANY

Well location, MILK CABIN OM11D M32 595, located as shown in the SW 1/4 SW 1/4 of Section 32, T55, R95W, 6th P.M., Garfield County, Colorado.

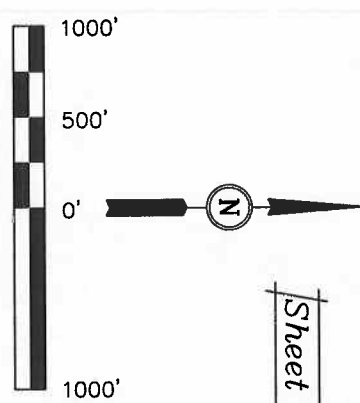
BASIS OF ELEVATION

SPOT ELEVATION AT THE NORTHWEST CORNER OF SECTION 30, T55, R95W, 6th P.M. TAKEN FROM THE FORKED GULCH QUADRANGLE, COLORADO, GARFIELD COUNTY, 7.5 MINUTE SERIES (TOPOGRAPHICAL MAP) PUBLISHED BY THE UNITED STATES DEPARTMENT OF THE INTERIOR, GEOLOGICAL SURVEY. SAID ELEVATION IS MARKED AS BEING 5966 FEET.

BASIS OF BEARINGS

BASIS OF BEARINGS IS A G.P.S. OBSERVATION.

Sheet 1b of 12



CERTIFICATE

THIS IS TO CERTIFY THAT THE ABOVE PLAT WAS PREPARED FROM FIELD NOTES OF ACTUAL SURVEYS MADE BY ME OR UNDER MY SUPERVISION AND THAT THE SAME ARE TRUE AND CORRECT TO THE BEST OF MY KNOWLEDGE AND BELIEF.

Revised: 06-14-10 D.R.B.
Revised: 06-08-10 D.R.B.

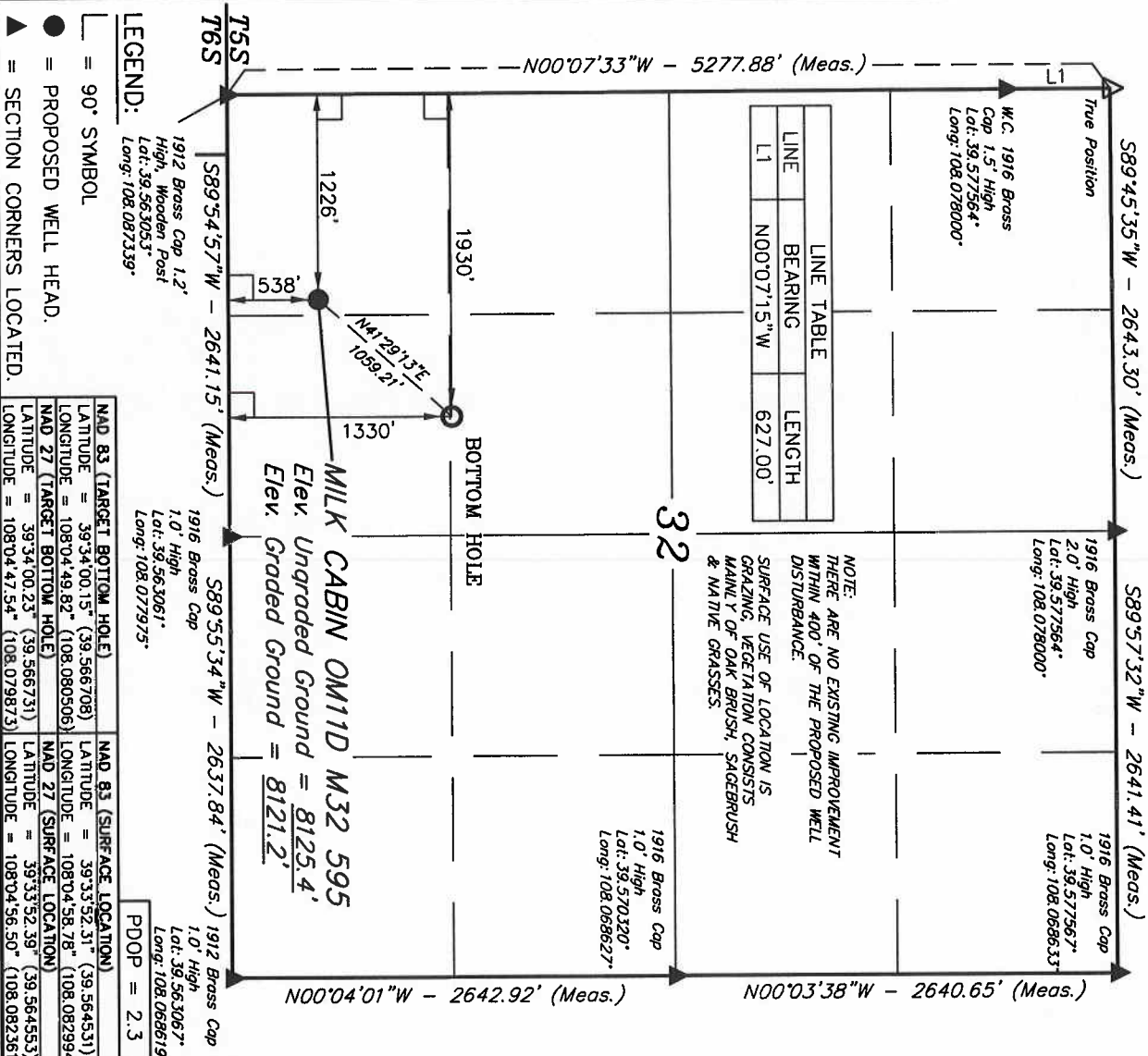
REGISTERED LAND SURVEYOR
REGISTRATION NO. 10178
STATE OF COLORADO

UNTAR ENGINEERING & LAND SURVEYING

85 SOUTH 200 EAST - VERNAL, UTAH 84078
(435) 789-1017

SCALE	DATE SURVEYED:	DATE DRAWN:
1" = 1000'	08-31-06	09-12-06

PARTY	REFERENCES
G.O. B.S. D.R.B.	G.L.O. PLAT
WEATHER	FILE
WARM	BERRY PETROLEUM COMPANY



40

Well location, MILK CABIN OM13B M32 595, located as shown in the SW 1/4 SW 1/4 of Section 32, T5S, R95W, 6th P.M., Garfield County, Colorado.

SPOT ELEVATION AT THE NORTHWEST CORNER OF SECTION 30, T5S, R95W, 6th P.M. TAKEN FROM THE FORKED GULCH QUADRANGLE, COLORADO, GARFIELD COUNTY, 7.5 MINUTE SERIES (TOPOGRAPHICAL MAP) PUBLISHED BY THE UNITED STATES DEPARTMENT OF THE INTERIOR, GEOLOGICAL SURVEY, SAID ELEVATION IS MARKED AS BEING 5986 FEET.

BASIS OF BEARINGS IS A G.P.S. OBSERVATION.



85 SOUTH 200 EAST - VERNAL, UTAH 84078
(435) 788-1017

SCALE
1" = 1000'

DATE SURVEYED:	08-31-06
DATE DRAIN:	09-12-06

PARTY

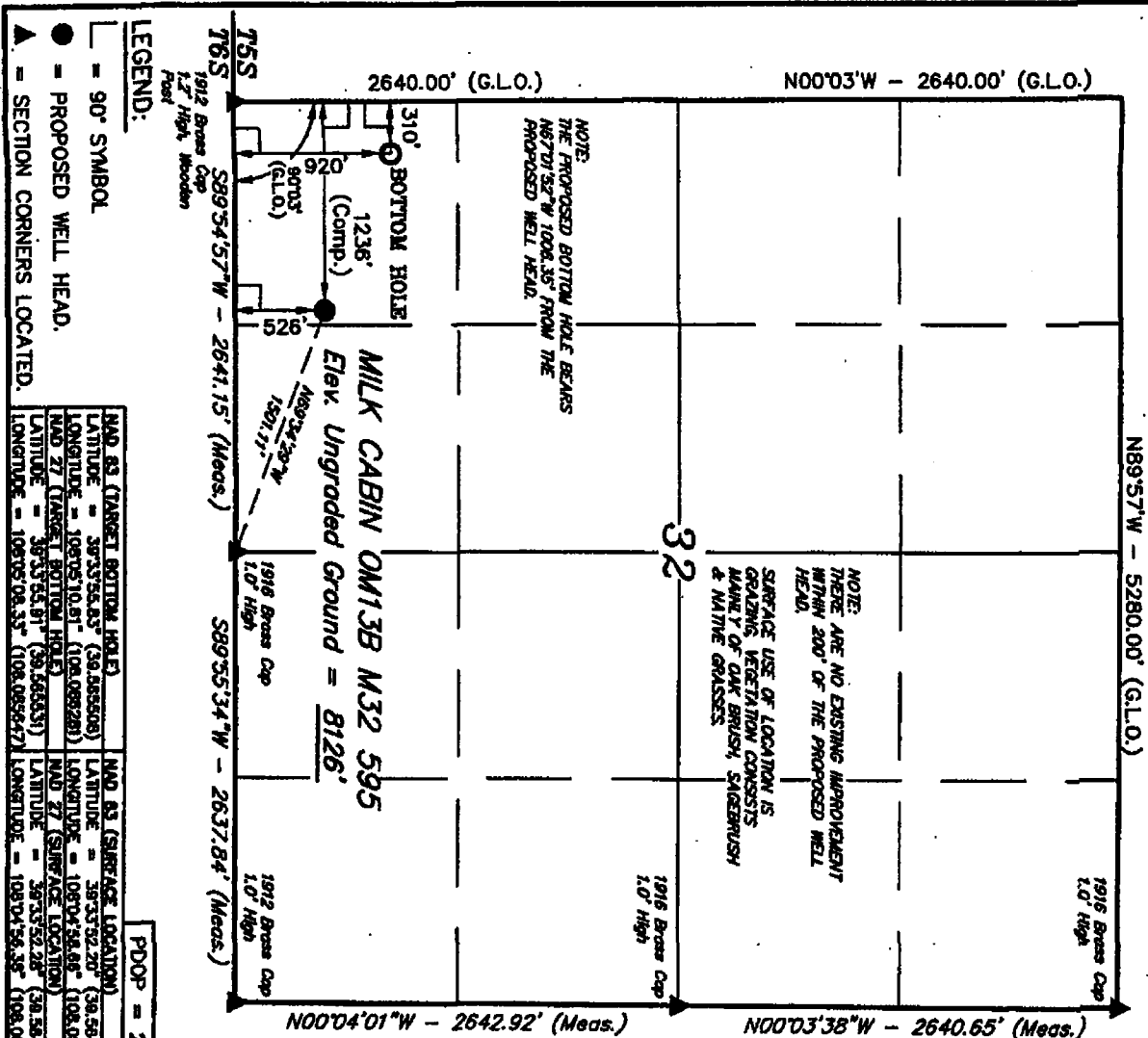
G.O. B.S. D.R.B.

WEATHER

5

WARM

BERRY PETROLEUM COMPANY



LEGEND:

= 90° SYMBOL

PROPOSED WELL HEAD.

SECTION CORNERS LOCATED.

MAD 23 (TARGET BOTTOM HOLE)		MAD 23 (SURFACE LOCATION)	
LATITUDE = 39°05'55.85" (39.5985408)	LATITUDE = 39°35'52.20" (39.5984500)		
LONGITUDE = 108°05'10.81" (108.0862281)	LONGITUDE = 108°04'54.68" (108.0823981)		
MAD 27 (TARGET BOTTOM HOLE)		MAD 27 (SURFACE LOCATION)	
LATITUDE = 39°35'54.81" (39.5985431)	LATITUDE = 39°35'52.20" (39.5984522)		
LONGITUDE = 108°05'08.35" (108.0855672)	LONGITUDE = 108°04'56.35" (108.0823283)		

PDOP = 2.3

NEUD

T55, R95W, 6th P.M.

BERRY PETROLEUM COMPANY

Well location, MILK CABIN OM13B M32 595, located as shown in the SW 1/4 SW 1/4 of Section 32, T55, R95W, 6th P.M., Garfield County, Colorado.

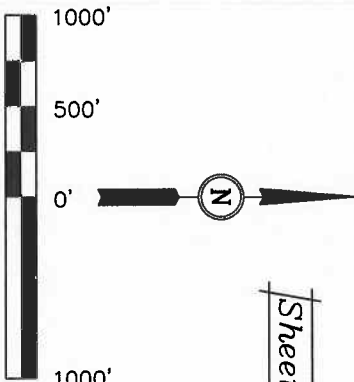
BASIS OF ELEVATION

SPOT ELEVATION AT THE NORTHWEST CORNER OF SECTION 30, T55, R95W, 6th P.M. TAKEN FROM THE FORKED QUICK QUADRANGLE, COLORADO, GARFIELD COUNTY, 7.5 MINUTE SERIES (TOPOGRAPHICAL MAP) PUBLISHED BY THE UNITED STATES DEPARTMENT OF THE INTERIOR, GEOLOGICAL SURVEY. SAID ELEVATION IS MARKED AS BEING 5966 FEET.

BASIS OF BEARINGS

BASIS OF BEARINGS IS A G.P.S. OBSERVATION.

Sheet 1h of 12



CERTIFICATE

THIS IS TO CERTIFY THAT THE ABOVE PLAT WAS PREPARED FROM FIELD NOTES OF ACTUAL SURVEY MADE BY THE SURVEYOR UNDER SUPERVISION AND THAT THE SAME ARE TRUE AND CORRECT TO THE BEST OF MY KNOWLEDGE AND BELIEF.

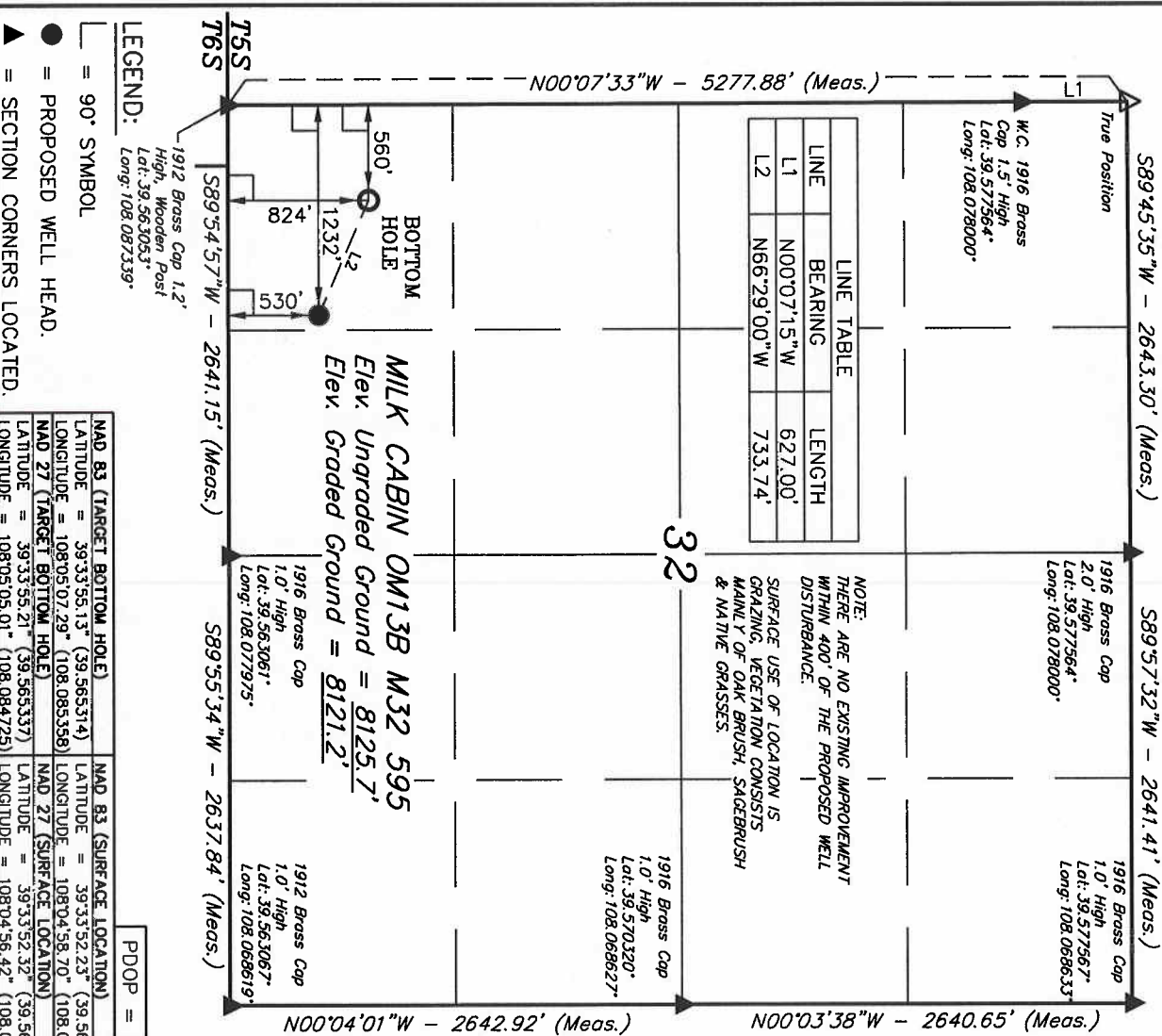
Revised: 06-14-10 D.R.B.
Revised: 06-08-10 D.R.B.

REGISTERED LAND SURVEYOR
RECEIVED FOR THE STATE OF COLORADO
JUL 1 2010

UINTAH ENGINEERING & LAND SURVEYING
85 SOUTH 200 EAST - VERNAL, UTAH 84078
(435) 789-1017

PARTY	DATE SURVEYED:	DATE DRAWN:
G.O. B.S. D.R.B.	08-31-06	09-12-06

WEATHER	FILE
WARM	BERRY PETROLEUM COMPANY



LEGEND:
= 90° SYMBOL
= PROPOSED WELL HEAD.
= SECTION CORNERS LOCATED.

PDOP = 2.3	
NAD 83 (TARGET BOTTOM HOLE)	NAD 83 (SURFACE LOCATION)
LATITUDE = 39°33'55.13" (39.565314)	LATITUDE = 39°33'52.23" (39.564506)
LONGITUDE = 108°05'07.29" (108.085356)	LONGITUDE = 108°04'58.70" (108.082972)
NAD 27 (TARGET BOTTOM HOLE)	NAD 27 (SURFACE LOCATION)
LATITUDE = 39°33'55.21" (39.565337)	LATITUDE = 39°33'52.32" (39.564533)
LONGITUDE = 108°05'05.01" (108.084725)	LONGITUDE = 108°04'56.42" (108.082339)

OLD

T5S, R95W, 6th P.M.

BERRY PETROLEUM COMPANY

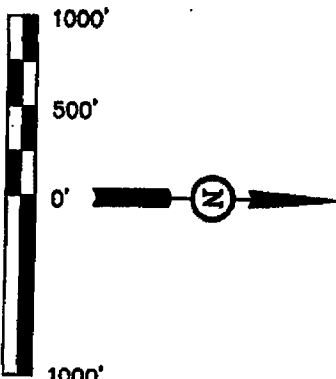
Well location, MILK CABIN OM13D M32 595, located as shown in the SW 1/4 SW 1/4 of Section 32, T5S, R95W, 6th P.M., Garfield County, Colorado.

BASIS OF ELEVATION

SPOT ELEVATION AT THE NORTHWEST CORNER OF SECTION 30, T5S, R95W, 6th P.M. TAKEN FROM THE FORKED GULCH QUADRANGLE, COLORADO, GARFIELD COUNTY, 7.5 MINUTE SERIES (TOPOGRAPHICAL MAP) PUBLISHED BY THE UNITED STATES DEPARTMENT OF THE INTERIOR, GEOLOGICAL SURVEY. SAID ELEVATION IS MARKED AS BEING 5966 FEET.

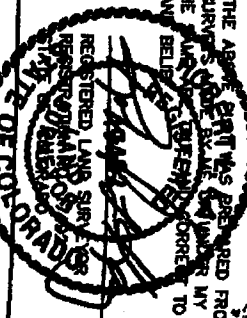
BASIS OF BEARINGS

BASIS OF BEARINGS IS A G.P.S. OBSERVATION.



CERTIFICATE

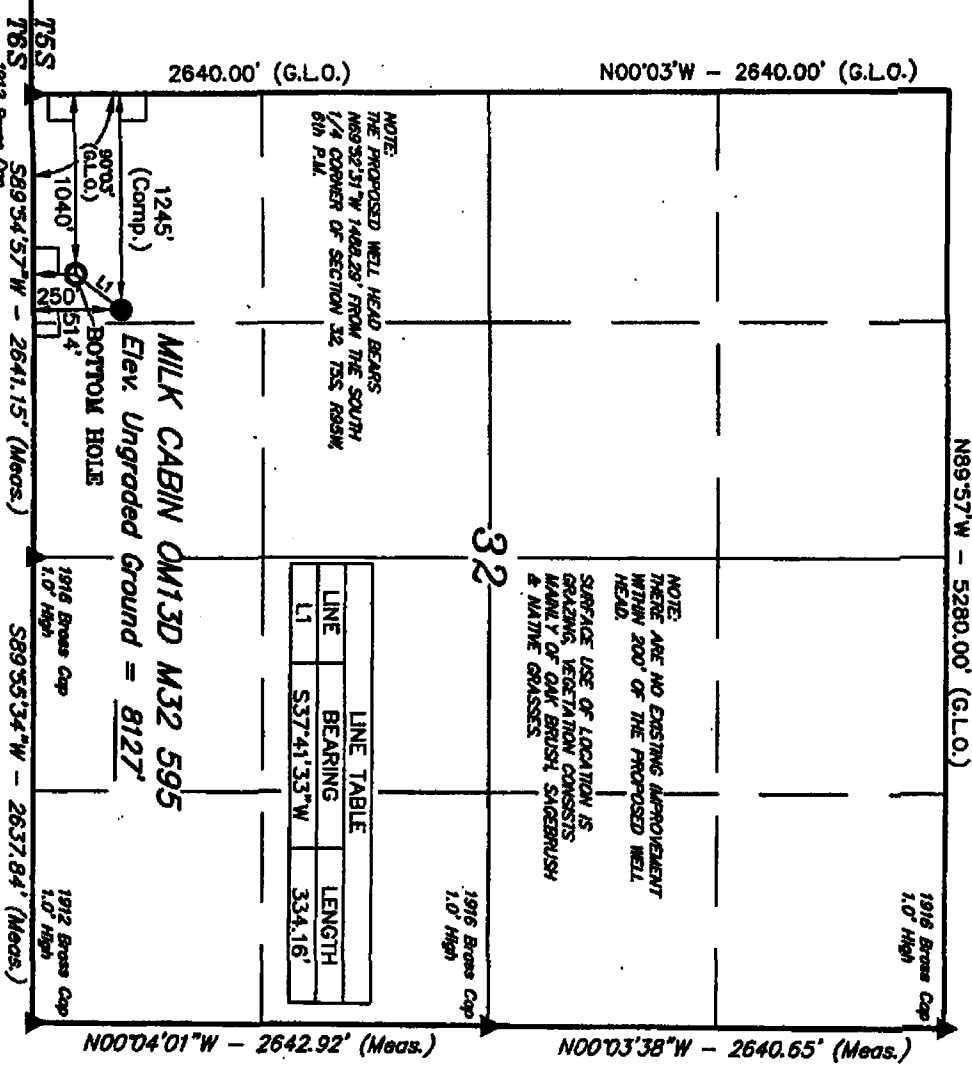
THIS IS TO CERTIFY THAT THE ABOVE PLAT WAS PREPARED FROM FIELD NOTES OF ACTUAL SURVEY AND THAT THE SAME ARE TRUE TO THE BEST OF MY KNOWLEDGE AND BELIEF.



UTAH ENGINEERING & LAND SURVEYING
86 SOUTH 200 EAST - VERNAL, UTAH 84078
(435) 780-1017

SCALE	
1" = 1000'	
DATE SURVEYED	DATE DRAWN
08-31-06	09-12-06

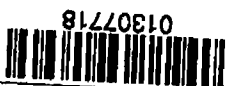
PARTY	REFERENCES
G.O. B.S. D.R.B.	G.L.O. PLAT
WEATHER	FILE
WARM	BERRY PETROLEUM COMPANY



LEGEND:

- 90° SYMBOL
- PROPOSED WELL HEAD.
- SECTION CORNERS LOCATED.

MAD 83 (TARGET BOTTOM HOLE)		MAD 83 (SURFACE LOCATION)	
LATITUDE = 39°35'48.45" (39.596773)	LONGITUDE = 109°05'01.05" (109.083818)	LATITUDE = 39°35'52.08" (39.598447)	LONGITUDE = 109°04'58.54" (109.082928)
MAD 27 (TARGET BOTTOM HOLE)		MAD 27 (SURFACE LOCATION)	
LATITUDE = 39°35'48.51" (39.596773)	LONGITUDE = 109°04'58.75" (109.082928)	LATITUDE = 39°35'52.18" (39.598448)	LONGITUDE = 109°04'58.28" (109.082284)



NEED

T55, R95W, 6th P.M.

BERRY PETROLEUM COMPANY

Well location, MILK CABIN OM13D M32 595, located as shown in the SW 1/4 SW 1/4 of Section 32, T55, R95W, 6th P.M., Garfield County, Colorado.

BASIS OF ELEVATION

SPOT ELEVATION AT THE NORTHWEST CORNER OF SECTION 30, T55, R95W, 6th P.M. TAKEN FROM THE FORKED GULCH QUADRANGLE, COLORADO, GARFIELD COUNTY, 7.5 MINUTE SERIES (TOPOGRAPHICAL MAP) PUBLISHED BY THE UNITED STATES DEPARTMENT OF THE INTERIOR, GEOLOGICAL SURVEY. SAID ELEVATION IS MARKED AS BEING 5966 FEET.

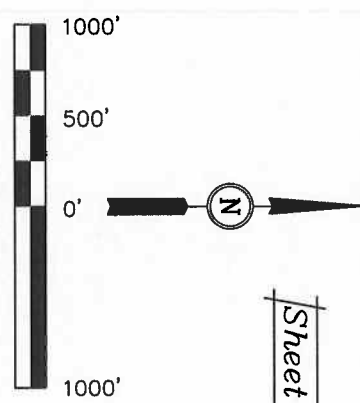
BASIS OF BEARINGS

BASIS OF BEARINGS IS A G.P.S. OBSERVATION.

Sheet 1j of 12

LINE TABLE		
LINE	BEARING	LENGTH
L1	N00°07'15"W	627.00'
L2	S57°52'00"W	609.88'

NOTE:
THERE ARE NO EXISTING IMPROVEMENT WITHIN 400' OF THE PROPOSED WELL DISTURBANCE.
SURFACE USE OF LOCATION IS GRAZING. VEGETATION CONSISTS MAINLY OF OAK BRUSH, SAGEBRUSH & NATIVE GRASSES.



CERTIFICATE

THIS IS TO CERTIFY THAT THE ABOVE PLAT WAS PREPARED FROM FIELD NOTES OF ACTUAL SURVEYS MADE BY ME OR UNDER MY SUPERVISION AND THAT THE SAME ARE TRUE AND CORRECT TO THE BEST OF MY KNOWLEDGE AND BELIEF.

Revised: 06-14-10 D.R.B.
Revised: 06-08-10 D.R.B.

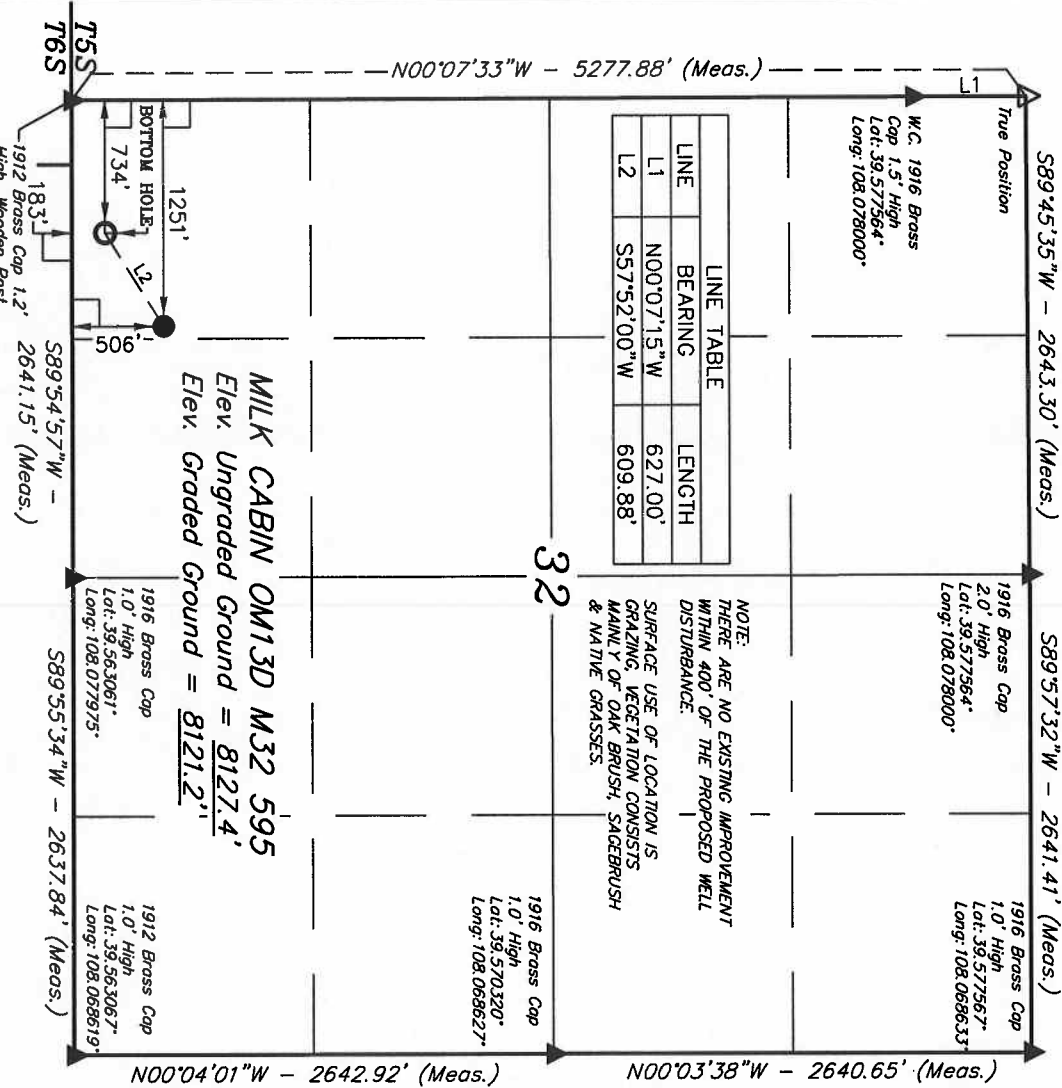
REGISTERED AND SUBSCRIBED
RECORDATION REVIEWED
STATE OF COLORADO

UNTAR ENGINEERING & LAND SURVEYING
85 SOUTH 200 EAST - VERNAL, UTAH 84078
(435) 789-1017

SCALE	DATE SURVEYED:	DATE DRAWN:
1" = 1000'	08-31-06	09-12-06

LEGEND:
— 90° SYMBOL
● = PROPOSED WELL HEAD.
▲ = SECTION CORNERS LOCATED.

PDOP = 1.7	
NAD 83 (TARGET BOTTOM HOLE)	NAD 83 (SURFACE LOCATION)
LATITUDE = 39°33'48.80" (39.563556)	LATITUDE = 39°33'52.00" (39.564444)
LONGITUDE = 108°05'05.06" (108.084739)	LONGITUDE = 108°04'58.46" (108.082906)
NAD 27 (TARGET SURFACE HOLE)	NAD 27 (SURFACE LOCATION)
LATITUDE = 39°33'48.88" (39.563578)	LATITUDE = 39°33'52.08" (39.564467)
LONGITUDE = 108°05'02.78" (108.084105)	LONGITUDE = 108°04'56.19" (108.082275)



MILK CABIN OM13D M32 595
Elev. Ungraded Ground = 8127.4'
Elev. Graded Ground = 8121.2'

OLD

T5S, R95W, 6th P.M.

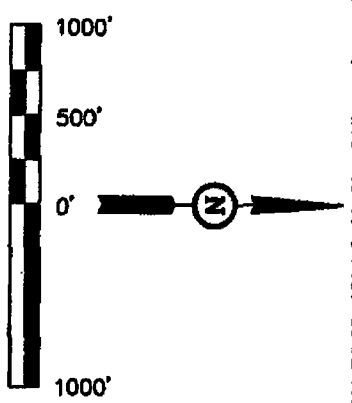
BERRY PETROLEUM COMPANY
Well location, MILK CABIN OM14D M32 595,
located as shown in the SW 1/4 SW 1/4 of
Section 32, T5S, R95W, 6th P.M., Garfield
County, Colorado.

BASIS OF ELEVATION

SPOT ELEVATION AT THE NORTHWEST CORNER OF SECTION
30, T5S, R95W, 6th P.M. TAKEN FROM THE FORKED GULCH
QUADRANGLE, COLORADO, GARFIELD COUNTY, 7.5 MINUTE
SERIES (TOPOGRAPHICAL MAP) PUBLISHED BY THE UNITED
STATES DEPARTMENT OF THE INTERIOR, GEOLOGICAL SURVEY.
SAID ELEVATION IS MARKED AS BEING 5966 FEET.

BASIS OF BEARINGS

BASIS OF BEARINGS IS A G.P.S. OBSERVATION.

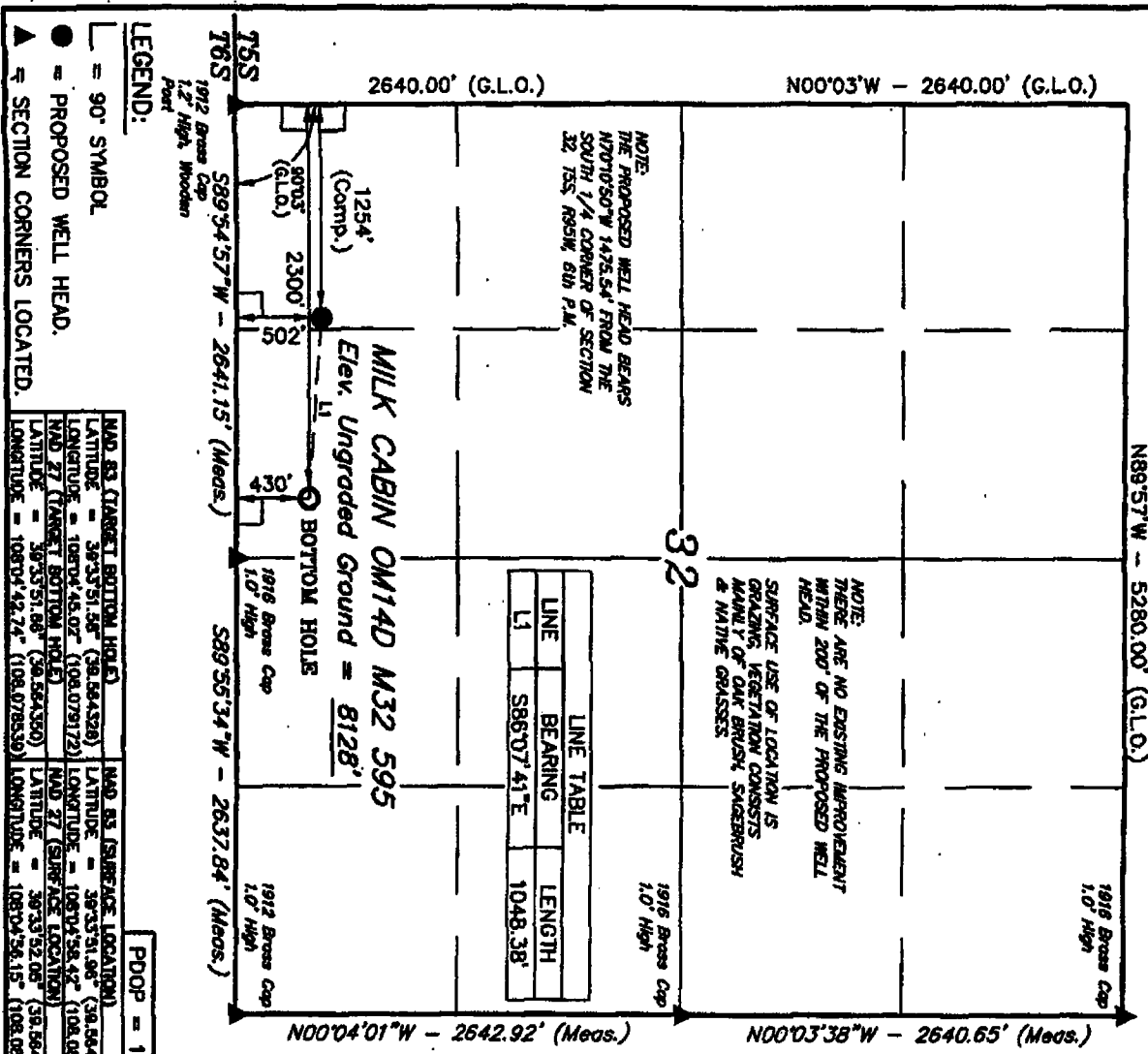


THIS IS TO CERTIFY THAT THE ABOVE INFORMATION WAS PREPARED FROM
FIELD NOTES OF ACTUAL SURVEY AND THAT THE SAME ARE TRUE AND CORRECT TO THE
BEST OF MY KNOWLEDGE AND BELIEF.

CERTIFICATE
[Signature]
REGISTERED SURVEYOR
STATE OF COLORADO
No. 1700

UNITAH ENGINEERING & LAND SURVEYING
86 SOUTH 200 EAST - VERNAL, UTAH 84078
(435) 788-1017

SCALE		DATE SURVEYED:	DATE DRAWN:
1" = 1000'		08-31-06	09-12-06
PARTY	REFERENCES		
G.O. B.S. D.R.B.	G.L.O. PLAT		
WEATHER	FILE		
WARM	BERRY PETROLEUM COMPANY		



LINE TABLE		
LINE	BEARING	LENGTH
L1	S86°07'41"E	1048.38'

LEGEND:

- = 90° SYMBOL
- = PROPOSED WELL HEAD
- ▲ = SECTION CORNERS LOCATED

MAD 83 (TARGET BOTTOM HOLE)		MAD 83 (SURFACE LOCATION)	
LATITUDE = 38°33'51.68" (38.564328)	LATITUDE = 38°33'51.68" (38.56433)		
LONGITUDE = 108°04'45.07" (108.078172)	LONGITUDE = 108°04'38.42" (108.082884)		
MAD 27 (TARGET BOTTOM HOLE)		MAD 27 (SURFACE LOCATION)	
LATITUDE = 38°33'51.68" (38.564330)	LATITUDE = 38°33'52.08" (38.564458)		
LONGITUDE = 108°04'42.74" (108.078539)	LONGITUDE = 108°04'36.15" (108.082264)		

PDOP = 1.7



14D-10360

T5S, R95W, 6th P.M.

BERRY PETROLEUM COMPANY

Well location, MILK CABIN OM14D M32 595, located as shown in the SW 1/4 SW 1/4 of Section 32, T5S, R95W, 6th P.M., Garfield County, Colorado.

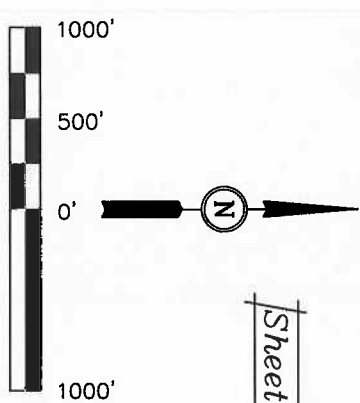
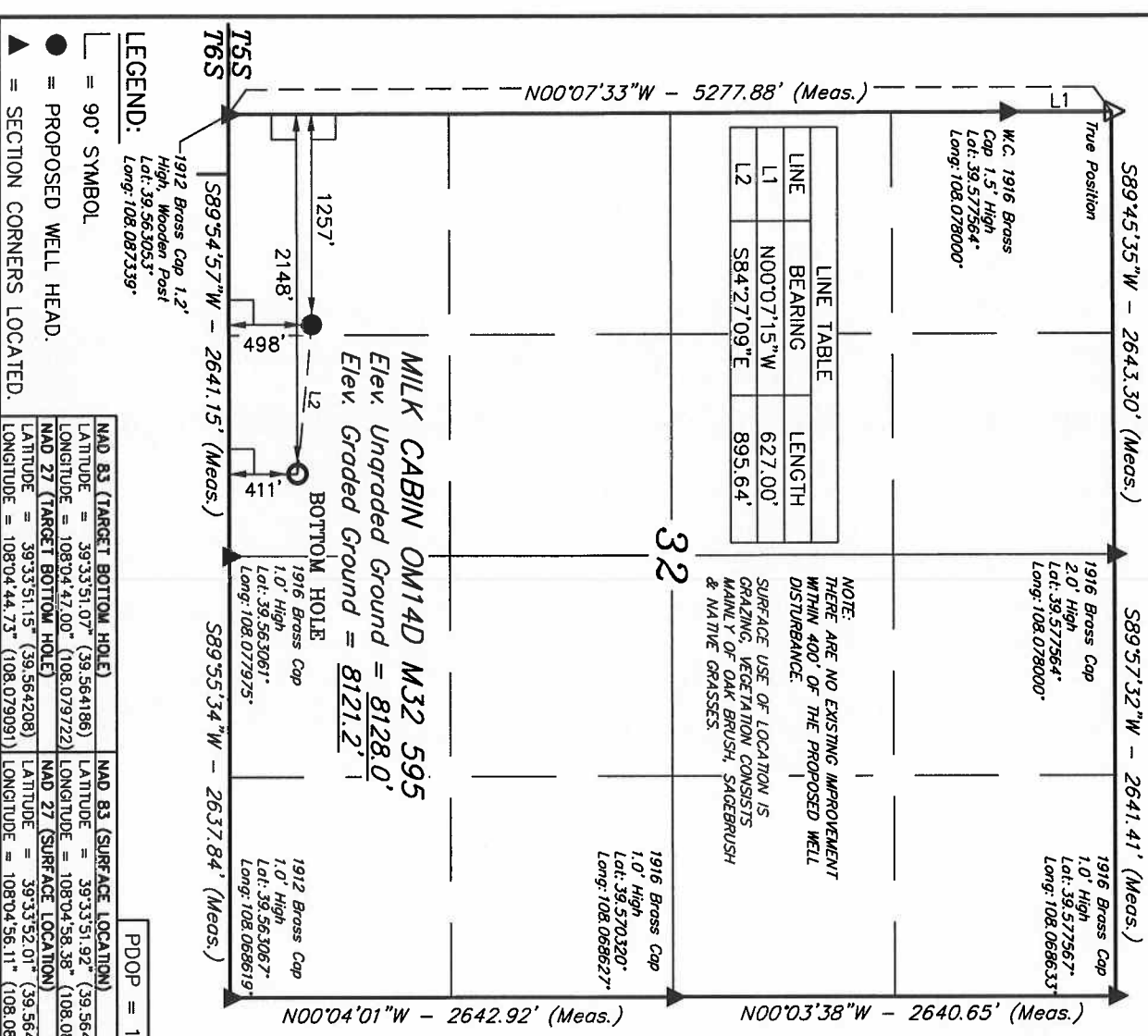
BASIS OF ELEVATION

SPOT ELEVATION AT THE NORTHWEST CORNER OF SECTION 30, T5S, R95W, 6th P.M. TAKEN FROM THE FORKED GULCH QUADRANGLE, COLORADO, GARFIELD COUNTY, 7.5 MINUTE SERIES (TOPOGRAPHICAL MAP) PUBLISHED BY THE UNITED STATES DEPARTMENT OF THE INTERIOR, GEOLOGICAL SURVEY. SAID ELEVATION IS MARKED AS BEING 5966 FEET.

BASIS OF BEARINGS

BASIS OF BEARINGS IS A G.P.S. OBSERVATION.

Sheet 11 of 12



THIS IS TO CERTIFY THAT THE ABOVE PLAT WAS PREPARED FROM FIELD NOTES OF ACTUAL SURVEYS MADE BY ME OR UNDER MY SUPERVISION AND THAT THE SAME ARE TRUE AND CORRECT TO THE BEST OF MY KNOWLEDGE AND BELIEF.

Revised: 06-14-10 D.R.B.
Revised: 06-08-10 D.R.B.

UNTAH ENGINEERING & LAND SURVEYING
85 SOUTH 200 EAST - VERNAL, UTAH 84078
(435) 789-1017

SCALE 1" = 1000'		DATE SURVEYED: 08-31-06	DATE DRAWN: 09-12-06
PARTY G.O. B.S. D.R.B.	REFERENCES G.L.O. PLAT		
WEATHER WARM	FILE BERRY PETROLEUM COMPANY		

NEW - 400072081

T5S, R95W, 6th P.M.

BERRY PETROLEUM COMPANY

Well location, MILK CABIN OM12C M32 595, located as shown in the SW 1/4 SW 1/4 of Section 32, T5S, R95W, 6th P.M., Garfield County, Colorado.

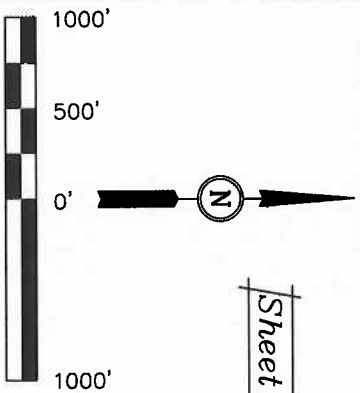
BASIS OF ELEVATION

SPOT ELEVATION AT THE NORTHWEST CORNER OF SECTION 30, T5S, R95W, 6th P.M. TAKEN FROM THE FORKED GULCH QUADRANGLE, COLORADO, GARFIELD COUNTY, 7.5 MINUTE SERIES (TOPOGRAPHICAL MAP) PUBLISHED BY THE UNITED STATES DEPARTMENT OF THE INTERIOR, GEOLOGICAL SURVEY. SAID ELEVATION IS MARKED AS BEING 5966 FEET.

BASIS OF BEARINGS

BASIS OF BEARINGS IS A G.P.S. OBSERVATION.

Sheet 1e of 12



CERTIFICATE

THIS IS TO CERTIFY THAT THE ABOVE PLAT WAS PREPARED FROM FIELD NOTES OF ACTUAL SURVEYS MADE BY ME OR UNDER MY SUPERVISION AND THAT THE SAME ARE TRUE AND CORRECT TO THE BEST OF MY KNOWLEDGE AND BELIEF.

Revised: 06-14-10 D.R.B.

UNTAH ENGINEERING & LAND SURVEYING
85 SOUTH 200 EAST - VERNAL, UTAH 84078
(435) 789-1017

SCALE	DATE SURVEYED:	DATE DRAWN:
1" = 1000'	06-08-10	05-20-10

PARTY	REFERENCES
G.O. B.B. D.R.B.	G.L.O. PLAT
WEATHER	FILE
WARM	BERRY PETROLEUM COMPANY

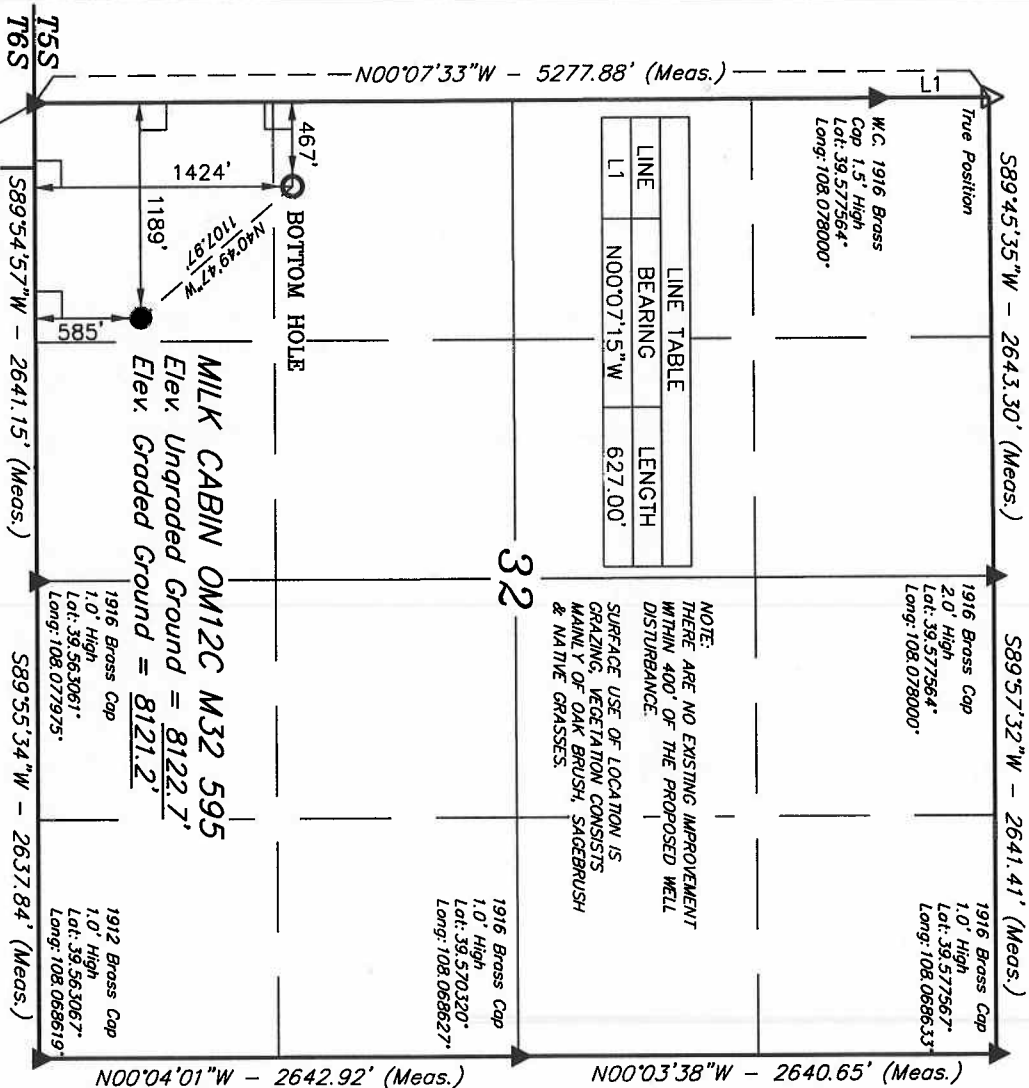
LEGEND:

- 90° SYMBOL
- PROPOSED WELL HEAD.
- SECTION CORNERS LOCATED.

NAD 83 (TARGET BOTTOM HOLE)	NAD 83 (SURFACE LOCATION)
LATITUDE = 39°34'01.06" (39.566961)	LATITUDE = 39°33'52.78" (39.564661)
LONGITUDE = 108°05'08.50" (108.085694)	LONGITUDE = 108°04'59.25" (108.083125)

NAD 27 (TARGET BOTTOM HOLE)	NAD 27 (SURFACE LOCATION)
LATITUDE = 39°34'01.15" (39.566985)	LATITUDE = 39°33'52.86" (39.564683)
LONGITUDE = 108°05'08.22" (108.085061)	LONGITUDE = 108°04'58.98" (108.082494)

PDOP = 2.0



LINE	BEARING	LENGTH
L1	N00°07'15"W	627.00'

NOTE: THERE ARE NO EXISTING IMPROVEMENT WITHIN 400' OF THE PROPOSED WELL DISTURBANCE. SURFACE USE OF LOCATION IS GRAZING, VEGETATION CONSISTS MAINLY OF OAK BRUSH, SAGEBRUSH & NATIVE GRASSES.

NEW 400072097

T55, R95W, 6th P.M.

BERRY PETROLEUM COMPANY

Well location, MILK CABIN OM12A M32 595, located as shown in the SW 1/4 SW 1/4 of Section 32, T55, R95W, 6th P.M., Garfield County, Colorado.

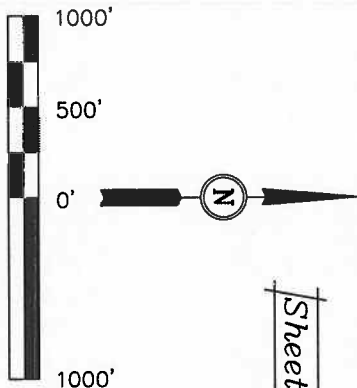
BASIS OF ELEVATION

SPOT ELEVATION AT THE NORTHWEST CORNER OF SECTION 30, T55, R95W, 6th P.M. TAKEN FROM THE FORKED GULCH QUADRANGLE, COLORADO, GARFIELD COUNTY, 7.5 MINUTE SERIES (TOPOGRAPHICAL MAP) PUBLISHED BY THE UNITED STATES DEPARTMENT OF THE INTERIOR, GEOLOGICAL SURVEY. SAID ELEVATION IS MARKED AS BEING 5966 FEET.

BASIS OF BEARINGS

BASIS OF BEARINGS IS A G.P.S. OBSERVATION.

Sheet 1c of 12



CERTIFICATE

THIS IS TO CERTIFY THAT THE ABOVE PLAT WAS PREPARED FROM FIELD NOTES OF ACTUAL SURVEYS MADE BY THE SURVEYOR, AND THAT THE SAME ARE TRUE AND CORRECT TO THE BEST OF MY KNOWLEDGE AND BELIEF.

Revised: 06-14-10 D.R.B.

REGISTERED LAND SURVEYOR
REGISTRATION NO. 17462
STATE OF COLORADO

UNTAR ENGINEERING & LAND SURVEYING
86 SOUTH 200 EAST - VERNAL, UTAH 84078
(435) 789-1017

SCALE	DATE SURVEYED:	DATE DRAWN:
1" = 1000'	05-20-10	06-08-10

PARTY	REFERENCES
G.O. B.B. D.R.B.	G.L.O. PLAT
WEATHER	FILE
WARM	BERRY PETROLEUM COMPANY

LEGEND:
1912 Brass Cap 1.2'
High, Wooden Post
Lat: 39.563053°
Long: 108.087339°

90° SYMBOL

PROPOSED WELL HEAD.

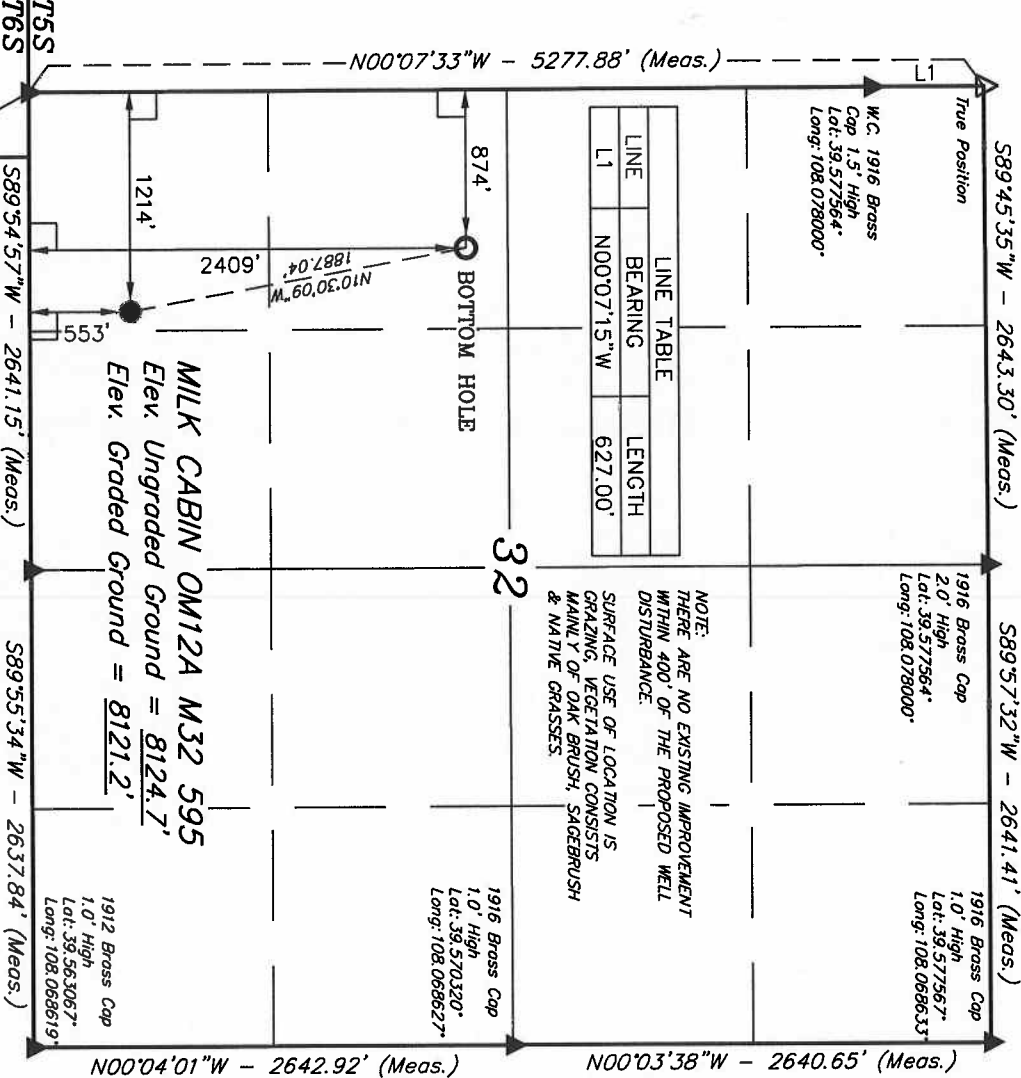
SECTION CORNERS LOCATED.

NAD 83 (TARGET BOTTOM HOLE)
LATITUDE = 39.3410.80° (39.569667)
LONGITUDE = 108.0503.32° (108.084256)
NAD 27 (TARGET BOTTOM HOLE)
LATITUDE = 39.3410.88° (39.569690)
LONGITUDE = 108.0501.04° (108.083623)

PDOP = 1.7

1916 Brass Cap
1.0' High
Lat: 39.563061°
Long: 108.077975°

NAD 83 (SURFACE LOCATION)
LATITUDE = 39.3352.47° (39.564575)
LONGITUDE = 108.0458.94° (108.083039)
NAD 27 (SURFACE LOCATION)
LATITUDE = 39.3352.55° (39.564597)
LONGITUDE = 108.0456.66° (108.082406)



T5S, R95W, 6th P.M.

Well location, MILK CABIN OM13A M32 595, located as shown in the SW 1/4 SW 1/4 of Section 32, T5S, R95W, 6th P.M., Garfield County, Colorado.

SPOT ELEVATION AT THE NORTHWEST CORNER OF SECTION 30, T5S, R95W, 6th P.M. TAKEN FROM THE FORDS GULCH QUADRANGLE, COLORADO, GARFIELD COUNTY, 7.5 MINUTE SERIES (TOPOGRAPHICAL MAP) PUBLISHED BY THE UNITED STATES DEPARTMENT OF THE INTERIOR, GEOLOGICAL SURVEY. SAID ELEVATION IS MARKED AS BEING 5966 FEET.

BASIS OF BEARINGS IS A G.P.S. OBSERVATION.



THIS IS TO CERTIFY THAT THE ABOVE PLAT WAS PREPARED FROM FIELD NOTES OF ACTUAL SURVEYS MADE BY ME OR UNDER MY SUPERVISION AND THAT THE SAME ARE TRUE AND CORRECT TO THE BEST OF MY KNOWLEDGE AND BELIEF.

Revised: 06-14-10 D.R.B.

(435) 789-1017

SCALE ↑

LE 1" = 1000'

DATE SURVEYED
05-20-2011DATE DRAWN:
06-08-10

NOTE: THERE ARE NO EXISTING IMPROVEMENTS WITHIN 400' OF THE PROPOSED WELL DISTURBANCE.

LEGEND:

\perp = 90° SYMBOL

● = PROPOSED WELL HEAD.

▲ = SECTION CORNERS LOCATED.

MAD 83 (TARGET BOTTOM HOLE)		MAD 83 (SURFACE LOCATION)	
LATITUDE = 39.33°58.04' (39.566122)	LATITUDE = 39.33°52.62' (39.564617)		
LONGITUDE = 108°05'07.96" (108.085554)	LONGITUDE = 108°04'59.10" (108.083083)		
MAD 27 (TARGET BOTTOM HOLE)		MAD 27 (SURFACE LOCATION)	
LATITUDE = 39.33°58.12' (39.566145)	LATITUDE = 39.33°52.76' (39.564639)		
LONGITUDE = 108°05'05.60" (108.084913)	LONGITUDE = 108°04'56.82" (108.082450)		

SCALE	DATE SURVEYED:	DATE DRAWN:
1" = 1000'	05-20-10	06-08-10
PARTY	REFERENCES	
G.O. B.B. D.R.B.	G.O. PLAT	
WEATHER	FILE	
WARM	BERRY PETROLEUM COMPANY	

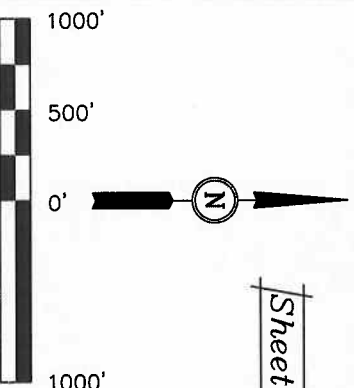
T5S, R95W, 6th P.M.

Well location, MILK CABIN 0M13C M32 595,
located as shown in the SW 1/4 SW 1/4 of
Section 32, T5S, R95W, 6th P.M., Garfield
County, Colorado.

SPOT ELEVATION AT THE NORTHWEST CORNER OF SECTION 30, T5S, R95W, 6th P.M. TAKEN FROM THE FORKED GULCH QUADRANGLE, COLORADO, GARFIELD COUNTY, 7.5 MINUTE SERIES (TOPOGRAPHICAL MAP) PUBLISHED BY THE UNITED STATES DEPARTMENT OF THE INTERIOR, GEOLOGICAL SURVEY. SAID ELEVATION IS MARKED AS BEING 5966 FEET.

BASIS OF BEARINGS IS A G.P.S. OBSERVATION.

Sheet 1i of 12



THIS IS TO CERTIFY THAT THE ABOVE ~~STATE~~ WAS PREPARED FROM FIELD NOTES OF ACTUAL SURVEYS MADE BY ME OR UNDER MY SUPERVISION AND THAT THE SAME ARE TRUE AND CORRECT TO THE BEST OF MY KNOWLEDGE AND BELIEF.

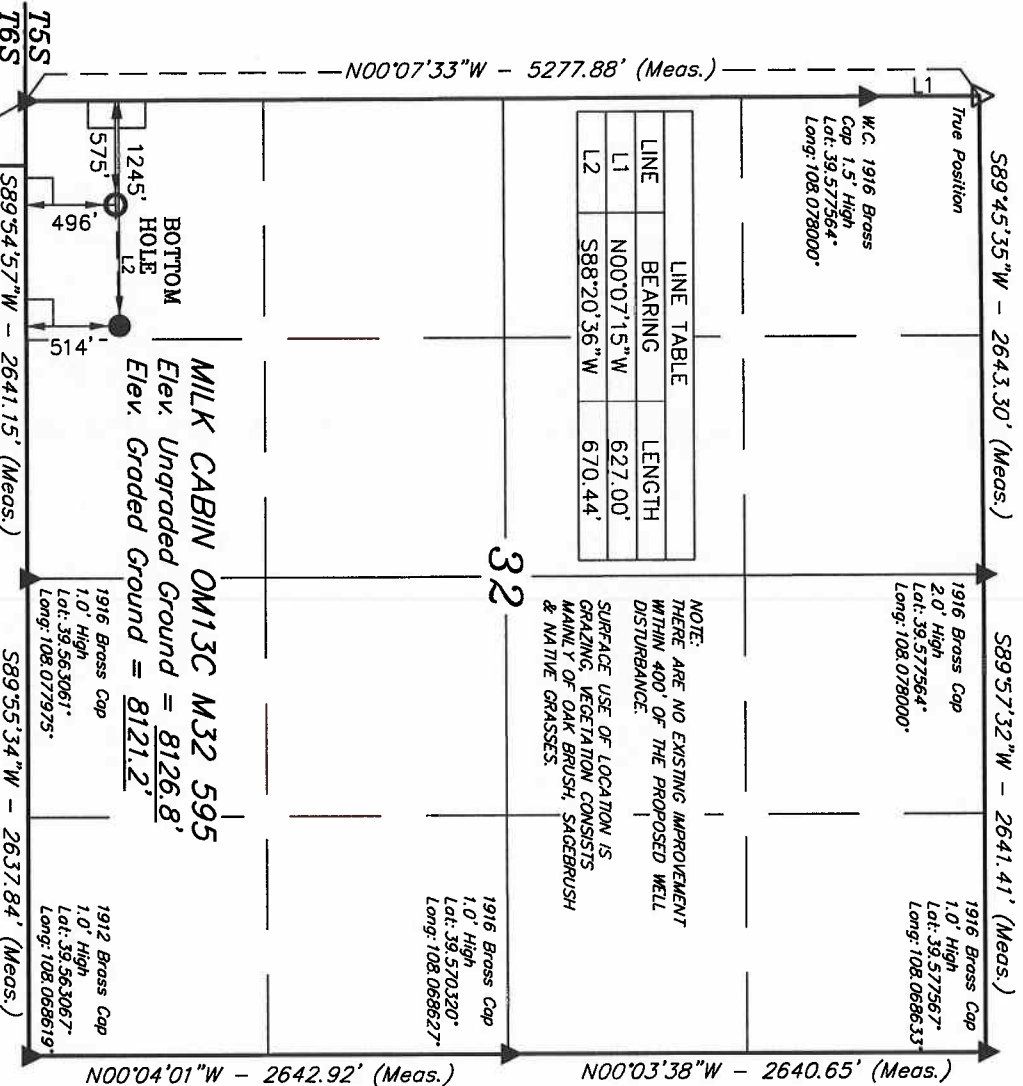
ABOVE SLAT WAS PREPARED FROM
EVIDENCE MADE BY US GRADING UNIT
BECAME ADE TITILE AND CORRECTION TO
BELG.

85 SOUTH 200 EAST - VERNAL, UTAH 84078

SCALE

SCALE	DATE SURVEYED:	DATE DRAWN:
1" = 1000'	05-20-10	06-08-10

PARTY	REFERENCES
G.O. B.B. D.R.B.	G.I.O. PLAT
WEATHER	FILE
WARM	BERRY PETROLEUM COMPANY



-1912 Brass Cap 1.2'
High, Wooden Post
Lat: 39.563053°
Long: 108.087339°

L = 90° SYMBOL

● PROPOSED WELL HEAD.

▲ = SECTION CORNERS LOCATED.