

BERRY PETROLEUM COMPANY

CURRENT FOOTAGE FOR

WELL PAD L15 696

SECTION 15, T6S, R96W, 6th P.M.

NW 1/4 SW 1/4

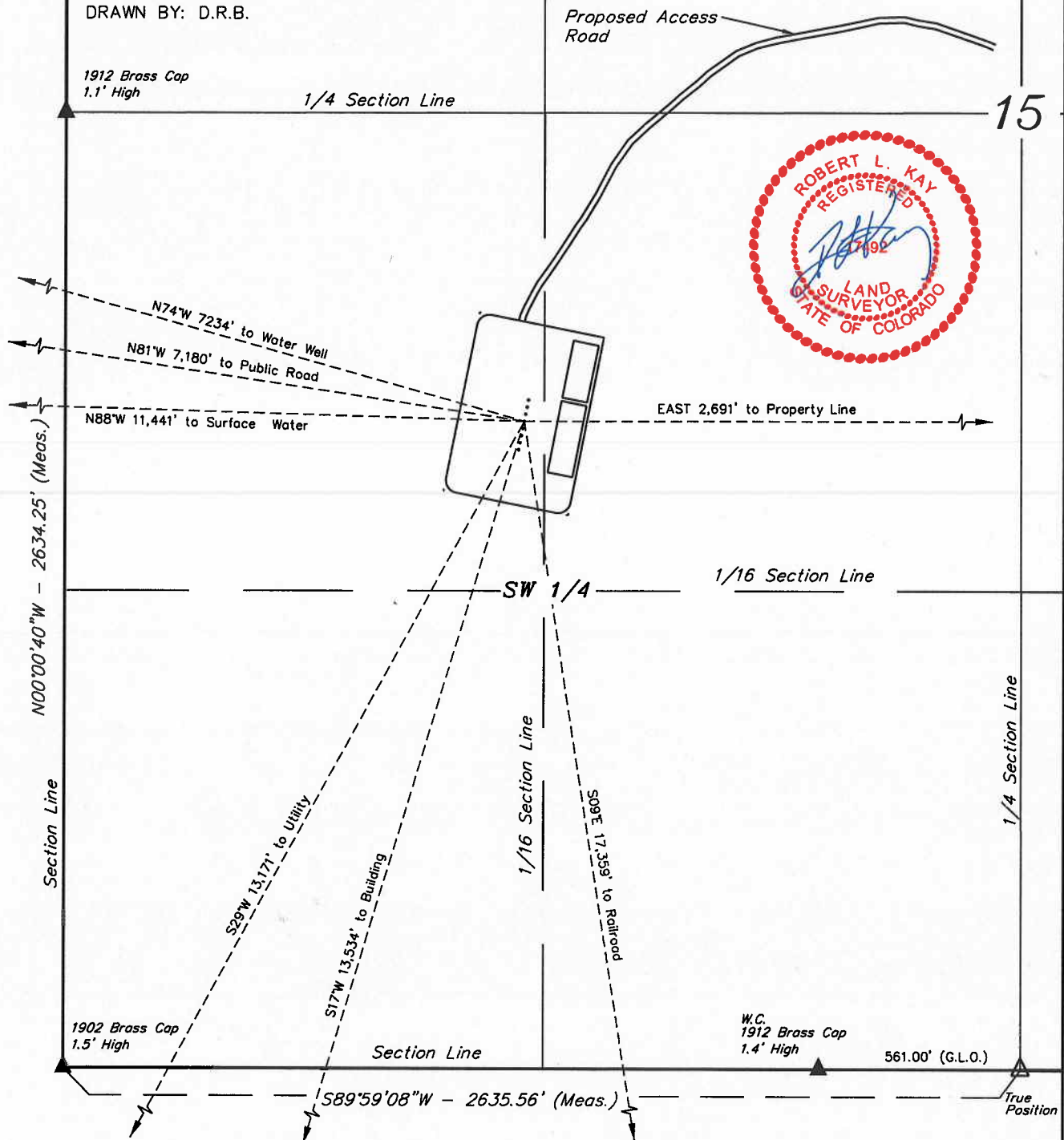
Sheet 6a of 12



SCALE: 1" = 400'
DATE: 04-28-10
DRAWN BY: D.R.B.

LEGEND:

▲ = SECTION CORNERS LOCATED.



UINTAH ENGINEERING & LAND SURVEYING

85 So. 200 East • Vernal, Utah 84078 • (435) 789-1017