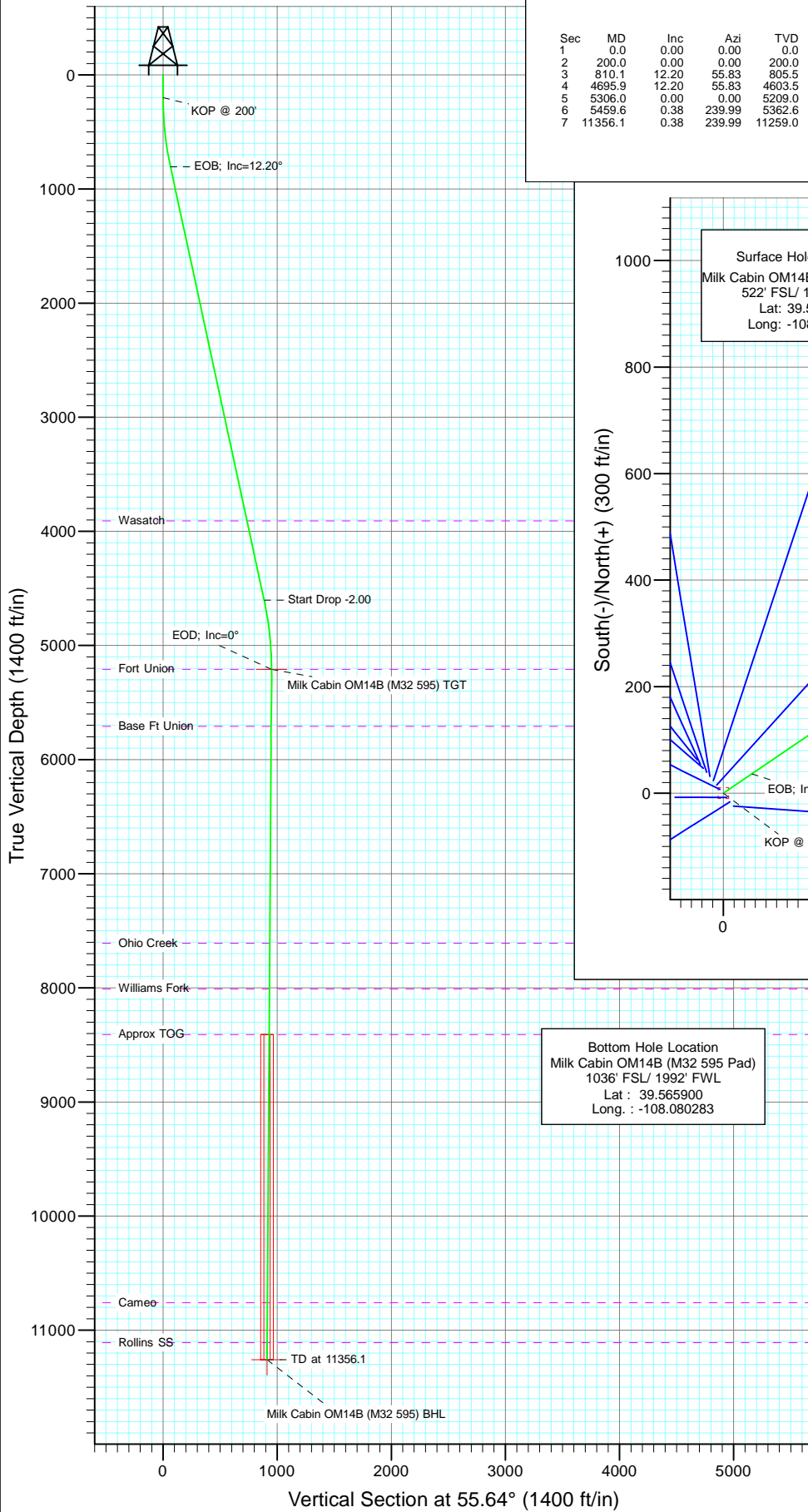
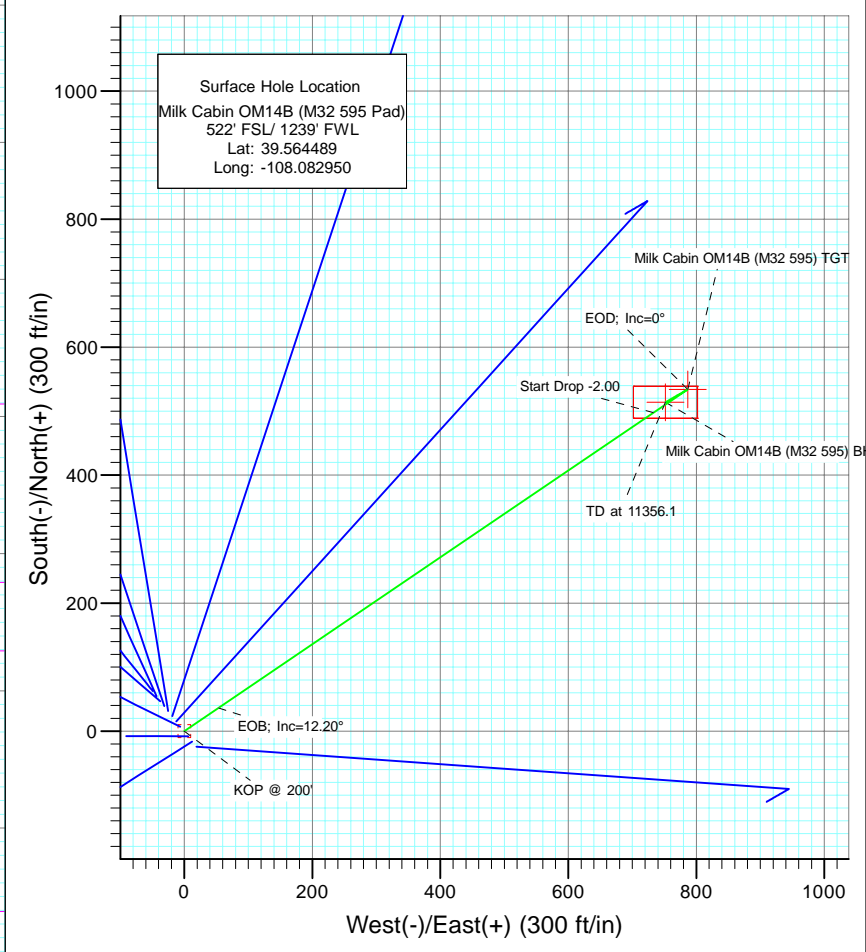




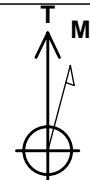
Project: Garfield County  
Site: SWSW S32-T5S-R95W (M32 595 Pad)  
Well: Milk Cabin OM14B (M32 595 Pad)  
Wellbore: DD  
Design: Plan #1



| SECTION DETAILS |         |       |        |         |       |       |      |        |       |                                |
|-----------------|---------|-------|--------|---------|-------|-------|------|--------|-------|--------------------------------|
| Sec             | MD      | Inc   | Azi    | TVD     | +N/-S | +E/-W | Dleg | TFace  | VSect | Target                         |
| 1               | 0.0     | 0.00  | 0.00   | 0.0     | 0.0   | 0.0   | 0.00 | 0.00   | 0.0   |                                |
| 2               | 200.0   | 0.00  | 0.00   | 200.0   | 0.0   | 0.0   | 0.00 | 0.00   | 0.0   |                                |
| 3               | 810.1   | 12.20 | 55.83  | 805.5   | 36.3  | 53.5  | 2.00 | 55.83  | 64.7  |                                |
| 4               | 4695.9  | 12.20 | 55.83  | 4603.5  | 497.7 | 733.0 | 0.00 | 0.00   | 886.0 |                                |
| 5               | 5306.0  | 0.00  | 0.00   | 5209.0  | 534.0 | 786.6 | 2.00 | 180.00 | 950.7 | Milk Cabin OM14B (M32 595) TGT |
| 6               | 5459.6  | 0.38  | 239.99 | 5362.6  | 533.7 | 786.1 | 0.25 | 239.99 | 950.2 |                                |
| 7               | 11356.1 | 0.38  | 239.99 | 11259.0 | 514.0 | 751.9 | 0.00 | 0.00   | 910.8 | Milk Cabin OM14B (M32 595) BHL |



Bottom Hole Location  
Milk Cabin OM14B (M32 595 Pad)  
1036' FSL/ 1992' FWL  
Lat : 39.565900  
Long. : -108.080283



Azimuths to True North  
Magnetic North: 10.53°  
  
Magnetic Field  
Strength: 52359.3snT  
Dip Angle: 65.81°  
Date: 6/16/2010  
Model: IGRF2010

| FORMATION TOP DETAILS |         |               |
|-----------------------|---------|---------------|
| TVDPath               | MDPath  | Formation     |
| 3909.0                | 3985.3  | Wasatch       |
| 5209.0                | 5306.0  | Fort Union    |
| 5709.0                | 5806.0  | Base Ft Union |
| 7609.0                | 7706.0  | Ohio Creek    |
| 8009.0                | 8106.0  | Williams Fork |
| 8409.0                | 8506.0  | Approx TOG    |
| 10759.0               | 10856.1 | Cameo         |
| 11109.0               | 11206.1 | Rollins SS    |

| DESIGN DETAILS: Plan #1             |         |        |     |     |          |
|-------------------------------------|---------|--------|-----|-----|----------|
| 105XXX; BH                          |         |        |     |     |          |
| KBE @ 8144.0ft (Original Well Elev) |         |        |     |     |          |
| Target                              | Azimuth | Origin | N/S | E/W | From TVD |
| Milk Cabin OM14B (M32 595) BHL      | 55.83   | Slot   | 0.0 | 0.0 | 0.0      |

# Cathedral Energy Services

## Planning Report

|                  |                                  |                                     |                                     |
|------------------|----------------------------------|-------------------------------------|-------------------------------------|
| <b>Database:</b> | EDM 5000.1 US Multi Users DB     | <b>Local Co-ordinate Reference:</b> | Well Milk Cabin OM14B (M32 595 Pad) |
| <b>Company:</b>  | Berry Petroleum Company (NAD 83) | <b>TVD Reference:</b>               | KBE @ 8144.0ft (Original Well Elev) |
| <b>Project:</b>  | Garfield County                  | <b>MD Reference:</b>                | KBE @ 8144.0ft (Original Well Elev) |
| <b>Site:</b>     | SWSW S32-T5S-R95W (M32 595 Pad)  | <b>North Reference:</b>             | True                                |
| <b>Well:</b>     | Milk Cabin OM14B (M32 595 Pad)   | <b>Survey Calculation Method:</b>   | Minimum Curvature                   |
| <b>Wellbore:</b> | DD                               |                                     |                                     |
| <b>Design:</b>   | Plan #1                          |                                     |                                     |

|                    |                           |                      |                |
|--------------------|---------------------------|----------------------|----------------|
| <b>Project</b>     | Garfield County           |                      |                |
| <b>Map System:</b> | US State Plane 1983       | <b>System Datum:</b> | Mean Sea Level |
| <b>Geo Datum:</b>  | North American Datum 1983 |                      |                |
| <b>Map Zone:</b>   | Colorado Central Zone     |                      |                |

| Site                  |          | SWSW S32-T5S-R95W (M32 595 Pad) |                 |                   |             |
|-----------------------|----------|---------------------------------|-----------------|-------------------|-------------|
| Site Position:        |          | Northing:                       | 1,640,872.06 ft | Latitude:         | 39.564553   |
| From:                 | Lat/Long | Easting:                        | 2,271,884.01 ft | Longitude:        | -108.083017 |
| Position Uncertainty: | 0.0 ft   | Slot Radius:                    | 13.200 in       | Grid Convergence: | -1.63 °     |

|                      |                                |        |                     |                 |               |             |
|----------------------|--------------------------------|--------|---------------------|-----------------|---------------|-------------|
| Well                 | Milk Cabin OM14B (M32 595 Pad) |        |                     |                 |               |             |
| Well Position        | +N/-S                          | 0.0 ft | Northing:           | 1,640,848.22 ft | Latitude:     | 39.564489   |
|                      | +E/-W                          | 0.0 ft | Easting:            | 2,271,902.23 ft | Longitude:    | -108.082950 |
| Position Uncertainty |                                | 0.0 ft | Wellhead Elevation: | ft              | Ground Level: | 8,121.0 ft  |

|                  |                   |                    |                            |                          |                                |
|------------------|-------------------|--------------------|----------------------------|--------------------------|--------------------------------|
| <b>Wellbore</b>  | DD                |                    |                            |                          |                                |
| <b>Magnetics</b> | <b>Model Name</b> | <b>Sample Date</b> | <b>Declination<br/>(°)</b> | <b>Dip Angle<br/>(°)</b> | <b>Field Strength<br/>(nT)</b> |
|                  | IGRF2010          | 6/16/2010          | 10.53                      | 65.81                    | 52,359                         |

|                          |                                  |                       |                       |                          |
|--------------------------|----------------------------------|-----------------------|-----------------------|--------------------------|
| <b>Design</b>            | Plan #1                          |                       |                       |                          |
| <b>Audit Notes:</b>      |                                  |                       |                       |                          |
| <b>Version:</b>          | <b>Phase:</b>                    | PLAN                  | <b>Tie On Depth:</b>  | 0.0                      |
| <b>Vertical Section:</b> | <b>Depth From (TVD)<br/>(ft)</b> | <b>+N/-S<br/>(ft)</b> | <b>+E/-W<br/>(ft)</b> | <b>Direction<br/>(°)</b> |
|                          | 0.0                              | 0.0                   | 0.0                   | 55.64                    |

| <b>Plan Sections</b>      |                    |                |                           |               |               |                             |                            |                           |            |                     |
|---------------------------|--------------------|----------------|---------------------------|---------------|---------------|-----------------------------|----------------------------|---------------------------|------------|---------------------|
| Measured<br>Depth<br>(ft) | Inclination<br>(°) | Azimuth<br>(°) | Vertical<br>Depth<br>(ft) | +N/-S<br>(ft) | +E/-W<br>(ft) | Dogleg<br>Rate<br>(°/100ft) | Build<br>Rate<br>(°/100ft) | Turn<br>Rate<br>(°/100ft) | TFO<br>(°) | Target              |
| 0.0                       | 0.00               | 0.00           | 0.0                       | 0.0           | 0.0           | 0.00                        | 0.00                       | 0.00                      | 0.00       |                     |
| 200.0                     | 0.00               | 0.00           | 200.0                     | 0.0           | 0.0           | 0.00                        | 0.00                       | 0.00                      | 0.00       |                     |
| 810.1                     | 12.20              | 55.83          | 805.5                     | 36.3          | 53.5          | 2.00                        | 2.00                       | 0.00                      | 55.83      |                     |
| 4,695.9                   | 12.20              | 55.83          | 4,603.5                   | 497.7         | 733.0         | 0.00                        | 0.00                       | 0.00                      | 0.00       |                     |
| 5,306.0                   | 0.00               | 0.00           | 5,209.0                   | 534.0         | 786.6         | 2.00                        | -2.00                      | 0.00                      | 180.00     | Milk Cabin OM14B (N |
| 5,459.6                   | 0.38               | 239.99         | 5,362.6                   | 533.7         | 786.1         | 0.25                        | 0.25                       | -78.13                    | 239.99     |                     |
| 11,356.1                  | 0.38               | 239.99         | 11,259.0                  | 514.0         | 751.9         | 0.00                        | 0.00                       | 0.00                      | 0.00       | Milk Cabin OM14B (N |

# Cathedral Energy Services

## Planning Report

|                  |                                  |                                     |                                     |
|------------------|----------------------------------|-------------------------------------|-------------------------------------|
| <b>Database:</b> | EDM 5000.1 US Multi Users DB     | <b>Local Co-ordinate Reference:</b> | Well Milk Cabin OM14B (M32 595 Pad) |
| <b>Company:</b>  | Berry Petroleum Company (NAD 83) | <b>TVD Reference:</b>               | KBE @ 8144.0ft (Original Well Elev) |
| <b>Project:</b>  | Garfield County                  | <b>MD Reference:</b>                | KBE @ 8144.0ft (Original Well Elev) |
| <b>Site:</b>     | SWSW S32-T5S-R95W (M32 595 Pad)  | <b>North Reference:</b>             | True                                |
| <b>Well:</b>     | Milk Cabin OM14B (M32 595 Pad)   | <b>Survey Calculation Method:</b>   | Minimum Curvature                   |
| <b>Wellbore:</b> | DD                               |                                     |                                     |
| <b>Design:</b>   | Plan #1                          |                                     |                                     |

### Planned Survey

| Measured Depth (ft) | Inclination (°) | Azimuth (°) | Vertical Depth (ft) | +N/-S (ft) | +E/-W (ft) | Vertical Section (ft) | Dogleg Rate (°/100ft) | Build Rate (°/100ft) | Comments / Formations |
|---------------------|-----------------|-------------|---------------------|------------|------------|-----------------------|-----------------------|----------------------|-----------------------|
| 0.0                 | 0.00            | 0.00        | 0.0                 | 0.0        | 0.0        | 0.0                   | 0.00                  | 0.00                 |                       |
| 30.0                | 0.00            | 0.00        | 30.0                | 0.0        | 0.0        | 0.0                   | 0.00                  | 0.00                 |                       |
| 60.0                | 0.00            | 0.00        | 60.0                | 0.0        | 0.0        | 0.0                   | 0.00                  | 0.00                 |                       |
| 90.0                | 0.00            | 0.00        | 90.0                | 0.0        | 0.0        | 0.0                   | 0.00                  | 0.00                 |                       |
| 120.0               | 0.00            | 0.00        | 120.0               | 0.0        | 0.0        | 0.0                   | 0.00                  | 0.00                 |                       |
| 150.0               | 0.00            | 0.00        | 150.0               | 0.0        | 0.0        | 0.0                   | 0.00                  | 0.00                 |                       |
| 180.0               | 0.00            | 0.00        | 180.0               | 0.0        | 0.0        | 0.0                   | 0.00                  | 0.00                 |                       |
| 200.0               | 0.00            | 0.00        | 200.0               | 0.0        | 0.0        | 0.0                   | 0.00                  | 0.00                 | KOP @ 200'            |
| 210.0               | 0.20            | 55.83       | 210.0               | 0.0        | 0.0        | 0.0                   | 2.00                  | 2.00                 |                       |
| 240.0               | 0.80            | 55.83       | 240.0               | 0.2        | 0.2        | 0.3                   | 2.00                  | 2.00                 |                       |
| 270.0               | 1.40            | 55.83       | 270.0               | 0.5        | 0.7        | 0.9                   | 2.00                  | 2.00                 |                       |
| 300.0               | 2.00            | 55.83       | 300.0               | 1.0        | 1.4        | 1.7                   | 2.00                  | 2.00                 |                       |
| 330.0               | 2.60            | 55.83       | 330.0               | 1.7        | 2.4        | 2.9                   | 2.00                  | 2.00                 |                       |
| 360.0               | 3.20            | 55.83       | 359.9               | 2.5        | 3.7        | 4.5                   | 2.00                  | 2.00                 |                       |
| 390.0               | 3.80            | 55.83       | 389.9               | 3.5        | 5.2        | 6.3                   | 2.00                  | 2.00                 |                       |
| 420.0               | 4.40            | 55.83       | 419.8               | 4.7        | 7.0        | 8.4                   | 2.00                  | 2.00                 |                       |
| 450.0               | 5.00            | 55.83       | 449.7               | 6.1        | 9.0        | 10.9                  | 2.00                  | 2.00                 |                       |
| 480.0               | 5.60            | 55.83       | 479.6               | 7.7        | 11.3       | 13.7                  | 2.00                  | 2.00                 |                       |
| 510.0               | 6.20            | 55.83       | 509.4               | 9.4        | 13.9       | 16.8                  | 2.00                  | 2.00                 |                       |
| 540.0               | 6.80            | 55.83       | 539.2               | 11.3       | 16.7       | 20.2                  | 2.00                  | 2.00                 |                       |
| 570.0               | 7.40            | 55.83       | 569.0               | 13.4       | 19.7       | 23.9                  | 2.00                  | 2.00                 |                       |
| 600.0               | 8.00            | 55.83       | 598.7               | 15.7       | 23.1       | 27.9                  | 2.00                  | 2.00                 |                       |
| 630.0               | 8.60            | 55.83       | 628.4               | 18.1       | 26.6       | 32.2                  | 2.00                  | 2.00                 |                       |
| 660.0               | 9.20            | 55.83       | 658.0               | 20.7       | 30.5       | 36.9                  | 2.00                  | 2.00                 |                       |
| 690.0               | 9.80            | 55.83       | 687.6               | 23.5       | 34.6       | 41.8                  | 2.00                  | 2.00                 |                       |
| 720.0               | 10.40           | 55.83       | 717.1               | 26.4       | 38.9       | 47.1                  | 2.00                  | 2.00                 |                       |
| 750.0               | 11.00           | 55.83       | 746.6               | 29.6       | 43.5       | 52.6                  | 2.00                  | 2.00                 |                       |
| 780.0               | 11.60           | 55.83       | 776.0               | 32.9       | 48.4       | 58.5                  | 2.00                  | 2.00                 |                       |
| 810.0               | 12.20           | 55.83       | 805.4               | 36.3       | 53.5       | 64.7                  | 2.00                  | 2.00                 |                       |
| 810.1               | 12.20           | 55.83       | 805.5               | 36.3       | 53.5       | 64.7                  | 2.00                  | 2.00                 | EOB; Inc=12.20°       |
| 840.0               | 12.20           | 55.83       | 834.7               | 39.9       | 58.8       | 71.0                  | 0.00                  | 0.00                 |                       |
| 870.0               | 12.20           | 55.83       | 864.0               | 43.5       | 64.0       | 77.4                  | 0.00                  | 0.00                 |                       |
| 900.0               | 12.20           | 55.83       | 893.4               | 47.0       | 69.3       | 83.7                  | 0.00                  | 0.00                 |                       |
| 930.0               | 12.20           | 55.83       | 922.7               | 50.6       | 74.5       | 90.1                  | 0.00                  | 0.00                 |                       |
| 960.0               | 12.20           | 55.83       | 952.0               | 54.1       | 79.8       | 96.4                  | 0.00                  | 0.00                 |                       |
| 990.0               | 12.20           | 55.83       | 981.3               | 57.7       | 85.0       | 102.7                 | 0.00                  | 0.00                 |                       |
| 1,020.0             | 12.20           | 55.83       | 1,010.7             | 61.3       | 90.2       | 109.1                 | 0.00                  | 0.00                 |                       |
| 1,050.0             | 12.20           | 55.83       | 1,040.0             | 64.8       | 95.5       | 115.4                 | 0.00                  | 0.00                 |                       |
| 1,080.0             | 12.20           | 55.83       | 1,069.3             | 68.4       | 100.7      | 121.8                 | 0.00                  | 0.00                 |                       |
| 1,110.0             | 12.20           | 55.83       | 1,098.6             | 72.0       | 106.0      | 128.1                 | 0.00                  | 0.00                 |                       |
| 1,140.0             | 12.20           | 55.83       | 1,127.9             | 75.5       | 111.2      | 134.4                 | 0.00                  | 0.00                 |                       |
| 1,170.0             | 12.20           | 55.83       | 1,157.3             | 79.1       | 116.5      | 140.8                 | 0.00                  | 0.00                 |                       |
| 1,200.0             | 12.20           | 55.83       | 1,186.6             | 82.6       | 121.7      | 147.1                 | 0.00                  | 0.00                 |                       |
| 1,230.0             | 12.20           | 55.83       | 1,215.9             | 86.2       | 127.0      | 153.5                 | 0.00                  | 0.00                 |                       |
| 1,260.0             | 12.20           | 55.83       | 1,245.2             | 89.8       | 132.2      | 159.8                 | 0.00                  | 0.00                 |                       |
| 1,290.0             | 12.20           | 55.83       | 1,274.6             | 93.3       | 137.5      | 166.1                 | 0.00                  | 0.00                 |                       |
| 1,320.0             | 12.20           | 55.83       | 1,303.9             | 96.9       | 142.7      | 172.5                 | 0.00                  | 0.00                 |                       |
| 1,350.0             | 12.20           | 55.83       | 1,333.2             | 100.4      | 148.0      | 178.8                 | 0.00                  | 0.00                 |                       |
| 1,380.0             | 12.20           | 55.83       | 1,362.5             | 104.0      | 153.2      | 185.2                 | 0.00                  | 0.00                 |                       |
| 1,410.0             | 12.20           | 55.83       | 1,391.8             | 107.6      | 158.4      | 191.5                 | 0.00                  | 0.00                 |                       |
| 1,440.0             | 12.20           | 55.83       | 1,421.2             | 111.1      | 163.7      | 197.8                 | 0.00                  | 0.00                 |                       |
| 1,470.0             | 12.20           | 55.83       | 1,450.5             | 114.7      | 168.9      | 204.2                 | 0.00                  | 0.00                 |                       |

# Cathedral Energy Services

## Planning Report

|                  |                                  |                                     |                                     |
|------------------|----------------------------------|-------------------------------------|-------------------------------------|
| <b>Database:</b> | EDM 5000.1 US Multi Users DB     | <b>Local Co-ordinate Reference:</b> | Well Milk Cabin OM14B (M32 595 Pad) |
| <b>Company:</b>  | Berry Petroleum Company (NAD 83) | <b>TVD Reference:</b>               | KBE @ 8144.0ft (Original Well Elev) |
| <b>Project:</b>  | Garfield County                  | <b>MD Reference:</b>                | KBE @ 8144.0ft (Original Well Elev) |
| <b>Site:</b>     | SWSW S32-T5S-R95W (M32 595 Pad)  | <b>North Reference:</b>             | True                                |
| <b>Well:</b>     | Milk Cabin OM14B (M32 595 Pad)   | <b>Survey Calculation Method:</b>   | Minimum Curvature                   |
| <b>Wellbore:</b> | DD                               |                                     |                                     |
| <b>Design:</b>   | Plan #1                          |                                     |                                     |

### Planned Survey

| Measured Depth (ft) | Inclination (°) | Azimuth (°) | Vertical Depth (ft) | +N/-S (ft) | +E/-W (ft) | Vertical Section (ft) | Dogleg Rate (°/100ft) | Build Rate (°/100ft) | Comments / Formations |
|---------------------|-----------------|-------------|---------------------|------------|------------|-----------------------|-----------------------|----------------------|-----------------------|
| 1,500.0             | 12.20           | 55.83       | 1,479.8             | 118.3      | 174.2      | 210.5                 | 0.00                  | 0.00                 |                       |
| 1,530.0             | 12.20           | 55.83       | 1,509.1             | 121.8      | 179.4      | 216.9                 | 0.00                  | 0.00                 |                       |
| 1,560.0             | 12.20           | 55.83       | 1,538.5             | 125.4      | 184.7      | 223.2                 | 0.00                  | 0.00                 |                       |
| 1,590.0             | 12.20           | 55.83       | 1,567.8             | 128.9      | 189.9      | 229.5                 | 0.00                  | 0.00                 |                       |
| 1,620.0             | 12.20           | 55.83       | 1,597.1             | 132.5      | 195.2      | 235.9                 | 0.00                  | 0.00                 |                       |
| 1,650.0             | 12.20           | 55.83       | 1,626.4             | 136.1      | 200.4      | 242.2                 | 0.00                  | 0.00                 |                       |
| 1,680.0             | 12.20           | 55.83       | 1,655.7             | 139.6      | 205.7      | 248.6                 | 0.00                  | 0.00                 |                       |
| 1,710.0             | 12.20           | 55.83       | 1,685.1             | 143.2      | 210.9      | 254.9                 | 0.00                  | 0.00                 |                       |
| 1,740.0             | 12.20           | 55.83       | 1,714.4             | 146.7      | 216.1      | 261.3                 | 0.00                  | 0.00                 |                       |
| 1,770.0             | 12.20           | 55.83       | 1,743.7             | 150.3      | 221.4      | 267.6                 | 0.00                  | 0.00                 |                       |
| 1,800.0             | 12.20           | 55.83       | 1,773.0             | 153.9      | 226.6      | 273.9                 | 0.00                  | 0.00                 |                       |
| 1,830.0             | 12.20           | 55.83       | 1,802.4             | 157.4      | 231.9      | 280.3                 | 0.00                  | 0.00                 |                       |
| 1,860.0             | 12.20           | 55.83       | 1,831.7             | 161.0      | 237.1      | 286.6                 | 0.00                  | 0.00                 |                       |
| 1,890.0             | 12.20           | 55.83       | 1,861.0             | 164.6      | 242.4      | 293.0                 | 0.00                  | 0.00                 |                       |
| 1,920.0             | 12.20           | 55.83       | 1,890.3             | 168.1      | 247.6      | 299.3                 | 0.00                  | 0.00                 |                       |
| 1,950.0             | 12.20           | 55.83       | 1,919.6             | 171.7      | 252.9      | 305.6                 | 0.00                  | 0.00                 |                       |
| 1,980.0             | 12.20           | 55.83       | 1,949.0             | 175.2      | 258.1      | 312.0                 | 0.00                  | 0.00                 |                       |
| 2,010.0             | 12.20           | 55.83       | 1,978.3             | 178.8      | 263.4      | 318.3                 | 0.00                  | 0.00                 |                       |
| 2,040.0             | 12.20           | 55.83       | 2,007.6             | 182.4      | 268.6      | 324.7                 | 0.00                  | 0.00                 |                       |
| 2,070.0             | 12.20           | 55.83       | 2,036.9             | 185.9      | 273.8      | 331.0                 | 0.00                  | 0.00                 |                       |
| 2,100.0             | 12.20           | 55.83       | 2,066.3             | 189.5      | 279.1      | 337.3                 | 0.00                  | 0.00                 |                       |
| 2,130.0             | 12.20           | 55.83       | 2,095.6             | 193.0      | 284.3      | 343.7                 | 0.00                  | 0.00                 |                       |
| 2,160.0             | 12.20           | 55.83       | 2,124.9             | 196.6      | 289.6      | 350.0                 | 0.00                  | 0.00                 |                       |
| 2,190.0             | 12.20           | 55.83       | 2,154.2             | 200.2      | 294.8      | 356.4                 | 0.00                  | 0.00                 |                       |
| 2,220.0             | 12.20           | 55.83       | 2,183.6             | 203.7      | 300.1      | 362.7                 | 0.00                  | 0.00                 |                       |
| 2,250.0             | 12.20           | 55.83       | 2,212.9             | 207.3      | 305.3      | 369.0                 | 0.00                  | 0.00                 |                       |
| 2,280.0             | 12.20           | 55.83       | 2,242.2             | 210.8      | 310.6      | 375.4                 | 0.00                  | 0.00                 |                       |
| 2,310.0             | 12.20           | 55.83       | 2,271.5             | 214.4      | 315.8      | 381.7                 | 0.00                  | 0.00                 |                       |
| 2,340.0             | 12.20           | 55.83       | 2,300.8             | 218.0      | 321.1      | 388.1                 | 0.00                  | 0.00                 |                       |
| 2,370.0             | 12.20           | 55.83       | 2,330.2             | 221.5      | 326.3      | 394.4                 | 0.00                  | 0.00                 |                       |
| 2,400.0             | 12.20           | 55.83       | 2,359.5             | 225.1      | 331.6      | 400.7                 | 0.00                  | 0.00                 |                       |
| 2,430.0             | 12.20           | 55.83       | 2,388.8             | 228.7      | 336.8      | 407.1                 | 0.00                  | 0.00                 |                       |
| 2,460.0             | 12.20           | 55.83       | 2,418.1             | 232.2      | 342.0      | 413.4                 | 0.00                  | 0.00                 |                       |
| 2,490.0             | 12.20           | 55.83       | 2,447.5             | 235.8      | 347.3      | 419.8                 | 0.00                  | 0.00                 |                       |

### Targets

| Target Name                                                                           | Dip Angle (°) | Dip Dir. (°) | TVD (ft) | +N/-S (ft) | +E/-W (ft) | Northing (ft) | Easting (ft) | Latitude  | Longitude   |
|---------------------------------------------------------------------------------------|---------------|--------------|----------|------------|------------|---------------|--------------|-----------|-------------|
| - hit/miss target                                                                     |               |              |          |            |            |               |              |           |             |
| - Shape                                                                               |               |              |          |            |            |               |              |           |             |
| Milk Cabin OM14B (M32                                                                 | 0.00          | 0.00         | 5,209.0  | 534.0      | 786.6      | 1,641,359.64  | 2,272,703.64 | 39.565955 | -108.080160 |
| - plan misses target center by 2812.1ft at 2490.0ft MD (2447.5 TVD, 235.8 N, 347.3 E) |               |              |          |            |            |               |              |           |             |
| - Point                                                                               |               |              |          |            |            |               |              |           |             |
| Milk Cabin OM14B (M32                                                                 | 0.00          | 0.00         | 11,259.0 | 514.0      | 751.9      | 1,641,340.61  | 2,272,668.42 | 39.565900 | -108.080283 |
| - plan misses target center by 8825.2ft at 2490.0ft MD (2447.5 TVD, 235.8 N, 347.3 E) |               |              |          |            |            |               |              |           |             |
| - Rectangle (sides W50.0 H100.0 D0.0)                                                 |               |              |          |            |            |               |              |           |             |

# Cathedral Energy Services

## Planning Report

|                  |                                  |                                     |                                     |
|------------------|----------------------------------|-------------------------------------|-------------------------------------|
| <b>Database:</b> | EDM 5000.1 US Multi Users DB     | <b>Local Co-ordinate Reference:</b> | Well Milk Cabin OM14B (M32 595 Pad) |
| <b>Company:</b>  | Berry Petroleum Company (NAD 83) | <b>TVD Reference:</b>               | KBE @ 8144.0ft (Original Well Elev) |
| <b>Project:</b>  | Garfield County                  | <b>MD Reference:</b>                | KBE @ 8144.0ft (Original Well Elev) |
| <b>Site:</b>     | SWSW S32-T5S-R95W (M32 595 Pad)  | <b>North Reference:</b>             | True                                |
| <b>Well:</b>     | Milk Cabin OM14B (M32 595 Pad)   | <b>Survey Calculation Method:</b>   | Minimum Curvature                   |
| <b>Wellbore:</b> | DD                               |                                     |                                     |
| <b>Design:</b>   | Plan #1                          |                                     |                                     |

### Planned Survey

| Measured Depth (ft) | Inclination (°) | Azimuth (°) | Vertical Depth (ft) | +N/-S (ft) | +E/-W (ft) | Vertical Section (ft) | Dogleg Rate (°/100ft) | Build Rate (°/100ft) | Comments / Formations                         |
|---------------------|-----------------|-------------|---------------------|------------|------------|-----------------------|-----------------------|----------------------|-----------------------------------------------|
| 2,500.0             | 12.20           | 55.83       | 2,457.2             | 237.0      | 349.0      | 421.9                 | 0.00                  | 0.00                 |                                               |
| 2,600.0             | 12.20           | 55.83       | 2,555.0             | 248.8      | 366.5      | 443.0                 | 0.00                  | 0.00                 |                                               |
| 2,700.0             | 12.20           | 55.83       | 2,652.7             | 260.7      | 384.0      | 464.1                 | 0.00                  | 0.00                 |                                               |
| 2,800.0             | 12.20           | 55.83       | 2,750.4             | 272.6      | 401.5      | 485.3                 | 0.00                  | 0.00                 |                                               |
| 2,900.0             | 12.20           | 55.83       | 2,848.2             | 284.5      | 419.0      | 506.4                 | 0.00                  | 0.00                 |                                               |
| 3,000.0             | 12.20           | 55.83       | 2,945.9             | 296.3      | 436.5      | 527.5                 | 0.00                  | 0.00                 |                                               |
| 3,100.0             | 12.20           | 55.83       | 3,043.7             | 308.2      | 454.0      | 548.7                 | 0.00                  | 0.00                 |                                               |
| 3,200.0             | 12.20           | 55.83       | 3,141.4             | 320.1      | 471.4      | 569.8                 | 0.00                  | 0.00                 |                                               |
| 3,300.0             | 12.20           | 55.83       | 3,239.2             | 331.9      | 488.9      | 591.0                 | 0.00                  | 0.00                 |                                               |
| 3,400.0             | 12.20           | 55.83       | 3,336.9             | 343.8      | 506.4      | 612.1                 | 0.00                  | 0.00                 |                                               |
| 3,500.0             | 12.20           | 55.83       | 3,434.6             | 355.7      | 523.9      | 633.2                 | 0.00                  | 0.00                 |                                               |
| 3,600.0             | 12.20           | 55.83       | 3,532.4             | 367.6      | 541.4      | 654.4                 | 0.00                  | 0.00                 |                                               |
| 3,700.0             | 12.20           | 55.83       | 3,630.1             | 379.4      | 558.9      | 675.5                 | 0.00                  | 0.00                 |                                               |
| 3,800.0             | 12.20           | 55.83       | 3,727.9             | 391.3      | 576.4      | 696.6                 | 0.00                  | 0.00                 |                                               |
| 3,900.0             | 12.20           | 55.83       | 3,825.6             | 403.2      | 593.8      | 717.8                 | 0.00                  | 0.00                 |                                               |
| 3,985.3             | 12.20           | 55.83       | 3,909.0             | 413.3      | 608.8      | 735.8                 | 0.00                  | 0.00                 | Wasatch                                       |
| 4,000.0             | 12.20           | 55.83       | 3,923.3             | 415.0      | 611.3      | 738.9                 | 0.00                  | 0.00                 |                                               |
| 4,100.0             | 12.20           | 55.83       | 4,021.1             | 426.9      | 628.8      | 760.0                 | 0.00                  | 0.00                 |                                               |
| 4,200.0             | 12.20           | 55.83       | 4,118.8             | 438.8      | 646.3      | 781.2                 | 0.00                  | 0.00                 |                                               |
| 4,300.0             | 12.20           | 55.83       | 4,216.6             | 450.7      | 663.8      | 802.3                 | 0.00                  | 0.00                 |                                               |
| 4,400.0             | 12.20           | 55.83       | 4,314.3             | 462.5      | 681.3      | 823.4                 | 0.00                  | 0.00                 |                                               |
| 4,500.0             | 12.20           | 55.83       | 4,412.0             | 474.4      | 698.8      | 844.6                 | 0.00                  | 0.00                 |                                               |
| 4,600.0             | 12.20           | 55.83       | 4,509.8             | 486.3      | 716.2      | 865.7                 | 0.00                  | 0.00                 |                                               |
| 4,695.9             | 12.20           | 55.83       | 4,603.5             | 497.7      | 733.0      | 886.0                 | 0.00                  | 0.00                 | Start Drop -2.00                              |
| 4,700.0             | 12.12           | 55.83       | 4,607.5             | 498.1      | 733.7      | 886.8                 | 2.00                  | -2.00                |                                               |
| 4,800.0             | 10.12           | 55.83       | 4,705.6             | 509.0      | 749.7      | 906.1                 | 2.00                  | -2.00                |                                               |
| 4,900.0             | 8.12            | 55.83       | 4,804.4             | 517.9      | 762.8      | 922.0                 | 2.00                  | -2.00                |                                               |
| 5,000.0             | 6.12            | 55.83       | 4,903.6             | 524.8      | 773.0      | 934.4                 | 2.00                  | -2.00                |                                               |
| 5,100.0             | 4.12            | 55.83       | 5,003.2             | 529.8      | 780.4      | 943.3                 | 2.00                  | -2.00                |                                               |
| 5,200.0             | 2.12            | 55.83       | 5,103.0             | 532.9      | 784.9      | 948.7                 | 2.00                  | -2.00                |                                               |
| 5,300.0             | 0.12            | 55.83       | 5,203.0             | 534.0      | 786.5      | 950.7                 | 2.00                  | -2.00                |                                               |
| 5,306.0             | 0.00            | 0.00        | 5,209.0             | 534.0      | 786.6      | 950.7                 | 2.00                  | -2.00                | EOD; Inc=0° - Fort Union - Milk Cabin OM14B ( |
| 5,400.0             | 0.24            | 239.99      | 5,303.0             | 533.9      | 786.4      | 950.5                 | 0.25                  | 0.25                 |                                               |
| 5,459.6             | 0.38            | 239.99      | 5,362.6             | 533.7      | 786.1      | 950.2                 | 0.25                  | 0.25                 |                                               |
| 5,500.0             | 0.38            | 239.99      | 5,403.0             | 533.6      | 785.9      | 949.9                 | 0.00                  | 0.00                 |                                               |
| 5,600.0             | 0.38            | 239.99      | 5,503.0             | 533.3      | 785.3      | 949.2                 | 0.00                  | 0.00                 |                                               |
| 5,700.0             | 0.38            | 239.99      | 5,603.0             | 532.9      | 784.7      | 948.6                 | 0.00                  | 0.00                 |                                               |
| 5,800.0             | 0.38            | 239.99      | 5,703.0             | 532.6      | 784.1      | 947.9                 | 0.00                  | 0.00                 |                                               |
| 5,806.0             | 0.38            | 239.99      | 5,709.0             | 532.6      | 784.1      | 947.9                 | 0.00                  | 0.00                 | Base Ft Union                                 |
| 5,900.0             | 0.38            | 239.99      | 5,803.0             | 532.3      | 783.5      | 947.2                 | 0.00                  | 0.00                 |                                               |
| 6,000.0             | 0.38            | 239.99      | 5,903.0             | 531.9      | 783.0      | 946.6                 | 0.00                  | 0.00                 |                                               |
| 6,100.0             | 0.38            | 239.99      | 6,003.0             | 531.6      | 782.4      | 945.9                 | 0.00                  | 0.00                 |                                               |
| 6,200.0             | 0.38            | 239.99      | 6,103.0             | 531.3      | 781.8      | 945.2                 | 0.00                  | 0.00                 |                                               |
| 6,300.0             | 0.38            | 239.99      | 6,203.0             | 530.9      | 781.2      | 944.6                 | 0.00                  | 0.00                 |                                               |
| 6,400.0             | 0.38            | 239.99      | 6,303.0             | 530.6      | 780.6      | 943.9                 | 0.00                  | 0.00                 |                                               |
| 6,500.0             | 0.38            | 239.99      | 6,403.0             | 530.3      | 780.1      | 943.2                 | 0.00                  | 0.00                 |                                               |
| 6,600.0             | 0.38            | 239.99      | 6,503.0             | 529.9      | 779.5      | 942.6                 | 0.00                  | 0.00                 |                                               |
| 6,700.0             | 0.38            | 239.99      | 6,603.0             | 529.6      | 778.9      | 941.9                 | 0.00                  | 0.00                 |                                               |
| 6,800.0             | 0.38            | 239.99      | 6,703.0             | 529.2      | 778.3      | 941.2                 | 0.00                  | 0.00                 |                                               |
| 6,900.0             | 0.38            | 239.99      | 6,803.0             | 528.9      | 777.7      | 940.5                 | 0.00                  | 0.00                 |                                               |
| 7,000.0             | 0.38            | 239.99      | 6,903.0             | 528.6      | 777.2      | 939.9                 | 0.00                  | 0.00                 |                                               |
| 7,100.0             | 0.38            | 239.99      | 7,003.0             | 528.2      | 776.6      | 939.2                 | 0.00                  | 0.00                 |                                               |

# Cathedral Energy Services

## Planning Report

|                  |                                  |                                     |                                     |
|------------------|----------------------------------|-------------------------------------|-------------------------------------|
| <b>Database:</b> | EDM 5000.1 US Multi Users DB     | <b>Local Co-ordinate Reference:</b> | Well Milk Cabin OM14B (M32 595 Pad) |
| <b>Company:</b>  | Berry Petroleum Company (NAD 83) | <b>TVD Reference:</b>               | KBE @ 8144.0ft (Original Well Elev) |
| <b>Project:</b>  | Garfield County                  | <b>MD Reference:</b>                | KBE @ 8144.0ft (Original Well Elev) |
| <b>Site:</b>     | SWSW S32-T5S-R95W (M32 595 Pad)  | <b>North Reference:</b>             | True                                |
| <b>Well:</b>     | Milk Cabin OM14B (M32 595 Pad)   | <b>Survey Calculation Method:</b>   | Minimum Curvature                   |
| <b>Wellbore:</b> | DD                               |                                     |                                     |
| <b>Design:</b>   | Plan #1                          |                                     |                                     |

| Planned Survey      |                 |             |                     |            |            |                       |                       |                      |                                              |
|---------------------|-----------------|-------------|---------------------|------------|------------|-----------------------|-----------------------|----------------------|----------------------------------------------|
| Measured Depth (ft) | Inclination (°) | Azimuth (°) | Vertical Depth (ft) | +N/-S (ft) | +E/-W (ft) | Vertical Section (ft) | Dogleg Rate (°/100ft) | Build Rate (°/100ft) | Comments / Formations                        |
| 7,200.0             | 0.38            | 239.99      | 7,103.0             | 527.9      | 776.0      | 938.5                 | 0.00                  | 0.00                 |                                              |
| 7,300.0             | 0.38            | 239.99      | 7,203.0             | 527.6      | 775.4      | 937.9                 | 0.00                  | 0.00                 |                                              |
| 7,400.0             | 0.38            | 239.99      | 7,303.0             | 527.2      | 774.8      | 937.2                 | 0.00                  | 0.00                 |                                              |
| 7,500.0             | 0.38            | 239.99      | 7,403.0             | 526.9      | 774.3      | 936.5                 | 0.00                  | 0.00                 |                                              |
| 7,600.0             | 0.38            | 239.99      | 7,503.0             | 526.6      | 773.7      | 935.9                 | 0.00                  | 0.00                 |                                              |
| 7,700.0             | 0.38            | 239.99      | 7,603.0             | 526.2      | 773.1      | 935.2                 | 0.00                  | 0.00                 |                                              |
| 7,706.0             | 0.38            | 239.99      | 7,609.0             | 526.2      | 773.1      | 935.2                 | 0.00                  | 0.00                 | Ohio Creek                                   |
| 7,800.0             | 0.38            | 239.99      | 7,703.0             | 525.9      | 772.5      | 934.5                 | 0.00                  | 0.00                 |                                              |
| 7,900.0             | 0.38            | 239.99      | 7,803.0             | 525.6      | 771.9      | 933.9                 | 0.00                  | 0.00                 |                                              |
| 8,000.0             | 0.38            | 239.99      | 7,903.0             | 525.2      | 771.4      | 933.2                 | 0.00                  | 0.00                 |                                              |
| 8,100.0             | 0.38            | 239.99      | 8,003.0             | 524.9      | 770.8      | 932.5                 | 0.00                  | 0.00                 |                                              |
| 8,106.0             | 0.38            | 239.99      | 8,009.0             | 524.9      | 770.7      | 932.5                 | 0.00                  | 0.00                 | Williams Fork                                |
| 8,200.0             | 0.38            | 239.99      | 8,103.0             | 524.6      | 770.2      | 931.9                 | 0.00                  | 0.00                 |                                              |
| 8,300.0             | 0.38            | 239.99      | 8,203.0             | 524.2      | 769.6      | 931.2                 | 0.00                  | 0.00                 |                                              |
| 8,400.0             | 0.38            | 239.99      | 8,303.0             | 523.9      | 769.0      | 930.5                 | 0.00                  | 0.00                 |                                              |
| 8,500.0             | 0.38            | 239.99      | 8,403.0             | 523.5      | 768.5      | 929.9                 | 0.00                  | 0.00                 |                                              |
| 8,506.0             | 0.38            | 239.99      | 8,409.0             | 523.5      | 768.4      | 929.8                 | 0.00                  | 0.00                 | Approx TOG                                   |
| 8,600.0             | 0.38            | 239.99      | 8,502.9             | 523.2      | 767.9      | 929.2                 | 0.00                  | 0.00                 |                                              |
| 8,700.0             | 0.38            | 239.99      | 8,602.9             | 522.9      | 767.3      | 928.5                 | 0.00                  | 0.00                 |                                              |
| 8,800.0             | 0.38            | 239.99      | 8,702.9             | 522.5      | 766.7      | 927.9                 | 0.00                  | 0.00                 |                                              |
| 8,900.0             | 0.38            | 239.99      | 8,802.9             | 522.2      | 766.1      | 927.2                 | 0.00                  | 0.00                 |                                              |
| 9,000.0             | 0.38            | 239.99      | 8,902.9             | 521.9      | 765.6      | 926.5                 | 0.00                  | 0.00                 |                                              |
| 9,100.0             | 0.38            | 239.99      | 9,002.9             | 521.5      | 765.0      | 925.8                 | 0.00                  | 0.00                 |                                              |
| 9,200.0             | 0.38            | 239.99      | 9,102.9             | 521.2      | 764.4      | 925.2                 | 0.00                  | 0.00                 |                                              |
| 9,300.0             | 0.38            | 239.99      | 9,202.9             | 520.9      | 763.8      | 924.5                 | 0.00                  | 0.00                 |                                              |
| 9,400.0             | 0.38            | 239.99      | 9,302.9             | 520.5      | 763.2      | 923.8                 | 0.00                  | 0.00                 |                                              |
| 9,500.0             | 0.38            | 239.99      | 9,402.9             | 520.2      | 762.7      | 923.2                 | 0.00                  | 0.00                 |                                              |
| 9,600.0             | 0.38            | 239.99      | 9,502.9             | 519.9      | 762.1      | 922.5                 | 0.00                  | 0.00                 |                                              |
| 9,700.0             | 0.38            | 239.99      | 9,602.9             | 519.5      | 761.5      | 921.8                 | 0.00                  | 0.00                 |                                              |
| 9,800.0             | 0.38            | 239.99      | 9,702.9             | 519.2      | 760.9      | 921.2                 | 0.00                  | 0.00                 |                                              |
| 9,900.0             | 0.38            | 239.99      | 9,802.9             | 518.9      | 760.3      | 920.5                 | 0.00                  | 0.00                 |                                              |
| 10,000.0            | 0.38            | 239.99      | 9,902.9             | 518.5      | 759.8      | 919.8                 | 0.00                  | 0.00                 |                                              |
| 10,100.0            | 0.38            | 239.99      | 10,002.9            | 518.2      | 759.2      | 919.2                 | 0.00                  | 0.00                 |                                              |
| 10,200.0            | 0.38            | 239.99      | 10,102.9            | 517.8      | 758.6      | 918.5                 | 0.00                  | 0.00                 |                                              |
| 10,300.0            | 0.38            | 239.99      | 10,202.9            | 517.5      | 758.0      | 917.8                 | 0.00                  | 0.00                 |                                              |
| 10,400.0            | 0.38            | 239.99      | 10,302.9            | 517.2      | 757.4      | 917.2                 | 0.00                  | 0.00                 |                                              |
| 10,500.0            | 0.38            | 239.99      | 10,402.9            | 516.8      | 756.9      | 916.5                 | 0.00                  | 0.00                 |                                              |
| 10,600.0            | 0.38            | 239.99      | 10,502.9            | 516.5      | 756.3      | 915.8                 | 0.00                  | 0.00                 |                                              |
| 10,700.0            | 0.38            | 239.99      | 10,602.9            | 516.2      | 755.7      | 915.2                 | 0.00                  | 0.00                 |                                              |
| 10,800.0            | 0.38            | 239.99      | 10,702.9            | 515.8      | 755.1      | 914.5                 | 0.00                  | 0.00                 |                                              |
| 10,856.1            | 0.38            | 239.99      | 10,759.0            | 515.7      | 754.8      | 914.1                 | 0.00                  | 0.00                 | Cameo                                        |
| 10,900.0            | 0.38            | 239.99      | 10,802.9            | 515.5      | 754.5      | 913.8                 | 0.00                  | 0.00                 |                                              |
| 11,000.0            | 0.38            | 239.99      | 10,902.9            | 515.2      | 753.9      | 913.1                 | 0.00                  | 0.00                 |                                              |
| 11,100.0            | 0.38            | 239.99      | 11,002.9            | 514.8      | 753.4      | 912.5                 | 0.00                  | 0.00                 |                                              |
| 11,200.0            | 0.38            | 239.99      | 11,102.9            | 514.5      | 752.8      | 911.8                 | 0.00                  | 0.00                 |                                              |
| 11,206.1            | 0.38            | 239.99      | 11,109.0            | 514.5      | 752.8      | 911.8                 | 0.00                  | 0.00                 | Rollins SS                                   |
| 11,300.0            | 0.38            | 239.99      | 11,202.9            | 514.2      | 752.2      | 911.1                 | 0.00                  | 0.00                 |                                              |
| 11,356.1            | 0.38            | 239.99      | 11,259.0            | 514.0      | 751.9      | 910.8                 | 0.00                  | 0.00                 | TD at 11356.1 - Milk Cabin OM14B (M32 595) E |

# Cathedral Energy Services

## Planning Report

|                  |                                  |                                     |                                     |
|------------------|----------------------------------|-------------------------------------|-------------------------------------|
| <b>Database:</b> | EDM 5000.1 US Multi Users DB     | <b>Local Co-ordinate Reference:</b> | Well Milk Cabin OM14B (M32 595 Pad) |
| <b>Company:</b>  | Berry Petroleum Company (NAD 83) | <b>TVD Reference:</b>               | KBE @ 8144.0ft (Original Well Elev) |
| <b>Project:</b>  | Garfield County                  | <b>MD Reference:</b>                | KBE @ 8144.0ft (Original Well Elev) |
| <b>Site:</b>     | SWSW S32-T5S-R95W (M32 595 Pad)  | <b>North Reference:</b>             | True                                |
| <b>Well:</b>     | Milk Cabin OM14B (M32 595 Pad)   | <b>Survey Calculation Method:</b>   | Minimum Curvature                   |
| <b>Wellbore:</b> | DD                               |                                     |                                     |
| <b>Design:</b>   | Plan #1                          |                                     |                                     |

| Targets                                                                                     |           |          |          |       |       |              |              |           |             |
|---------------------------------------------------------------------------------------------|-----------|----------|----------|-------|-------|--------------|--------------|-----------|-------------|
| Target Name                                                                                 |           |          |          |       |       |              |              |           |             |
| - hit/miss target                                                                           | Dip Angle | Dip Dir. | TVD      | +N/-S | +E/-W | Northing     | Easting      | Latitude  | Longitude   |
| - Shape                                                                                     | (°)       | (°)      | (ft)     | (ft)  | (ft)  | (ft)         | (ft)         |           |             |
| Milk Cabin OM14B (M32<br>- plan hits target center<br>- Point                               | 0.00      | 0.00     | 5,209.0  | 534.0 | 786.6 | 1,641,359.64 | 2,272,703.64 | 39.565955 | -108.080160 |
| Milk Cabin OM14B (M32<br>- plan hits target center<br>- Rectangle (sides W50.0 H100.0 D0.0) | 0.00      | 0.00     | 11,259.0 | 514.0 | 751.9 | 1,641,340.61 | 2,272,668.42 | 39.565900 | -108.080283 |

| Formations     |                |               |           |      |               |  |
|----------------|----------------|---------------|-----------|------|---------------|--|
| Measured Depth | Vertical Depth | Name          | Lithology | Dip  | Dip Direction |  |
| (ft)           | (ft)           |               |           | (°)  | (°)           |  |
| 3,985.3        | 3,909.0        | Wasatch       |           | 0.00 |               |  |
| 5,306.0        | 5,209.0        | Fort Union    |           | 0.00 |               |  |
| 5,806.0        | 5,709.0        | Base Ft Union |           | 0.00 |               |  |
| 7,706.0        | 7,609.0        | Ohio Creek    |           | 0.00 |               |  |
| 8,106.0        | 8,009.0        | Williams Fork |           | 0.00 |               |  |
| 8,506.0        | 8,409.0        | Approx TOG    |           | 0.00 |               |  |
| 10,856.1       | 10,759.0       | Cameo         |           | 0.00 |               |  |
| 11,206.1       | 11,109.0       | Rollins SS    |           | 0.00 |               |  |

| Plan Annotations |                |                   |       |                  |  |
|------------------|----------------|-------------------|-------|------------------|--|
| Measured Depth   | Vertical Depth | Local Coordinates |       |                  |  |
| (ft)             | (ft)           | +N/-S             | +E/-W | Comment          |  |
| (ft)             | (ft)           | (ft)              | (ft)  |                  |  |
| 200.0            | 200.0          | 0.0               | 0.0   | KOP @ 200'       |  |
| 810.1            | 805.5          | 36.3              | 53.5  | EOB; Inc=12.20°  |  |
| 4,695.9          | 4,603.5        | 497.7             | 733.0 | Start Drop -2.00 |  |
| 5,306.0          | 5,209.0        | 534.0             | 786.6 | EOD; Inc=0°      |  |
| 11,356.1         | 11,259.0       | 514.0             | 751.9 | TD at 11356.1    |  |

# **Berry Petroleum Company (NAD 83)**

**Garfield County**

**SWSW S32-T5S-R95W (M32 595 Pad)**

**Milk Cabin OM14B (M32 595 Pad)**

**DD**

**Plan #1**

## **Anticollision Report**

**16 June, 2010**



# Cathedral Energy Services

## Anticollision Report

|                           |                                  |                                     |                                     |
|---------------------------|----------------------------------|-------------------------------------|-------------------------------------|
| <b>Company:</b>           | Berry Petroleum Company (NAD 83) | <b>Local Co-ordinate Reference:</b> | Well Milk Cabin OM14B (M32 595 Pad) |
| <b>Project:</b>           | Garfield County                  | <b>TVD Reference:</b>               | KBE @ 8144.0ft (Original Well Elev) |
| <b>Reference Site:</b>    | SWSW S32-T5S-R95W (M32 595 Pad)  | <b>MD Reference:</b>                | KBE @ 8144.0ft (Original Well Elev) |
| <b>Site Error:</b>        | 0.0ft                            | <b>North Reference:</b>             | True                                |
| <b>Reference Well:</b>    | Milk Cabin OM14B (M32 595 Pad)   | <b>Survey Calculation Method:</b>   | Minimum Curvature                   |
| <b>Well Error:</b>        | 0.0ft                            | <b>Output errors are at</b>         | 2.00 sigma                          |
| <b>Reference Wellbore</b> | DD                               | <b>Database:</b>                    | EDM 5000.1 US Multi Users DB        |
| <b>Reference Design:</b>  | Plan #1                          | <b>Offset TVD Reference:</b>        | Offset Datum                        |

| Reference                    | Plan #1                                                             |                |                     |
|------------------------------|---------------------------------------------------------------------|----------------|---------------------|
| Filter type:                 | NO GLOBAL FILTER: Using user defined selection & filtering criteria |                |                     |
| Interpolation Method:        | Stations                                                            | Error Model:   | Systematic Ellipse  |
| Depth Range:                 | Unlimited                                                           | Scan Method:   | Closest Approach 3D |
| Results Limited by:          | Maximum center-center distance of 100.0ft                           | Error Surface: | Elliptical Conic    |
| Warning Levels Evaluated at: | 2.00 Sigma                                                          |                |                     |

| Survey Tool Program |            | Date              | 6/16/2010 |             |  |
|---------------------|------------|-------------------|-----------|-------------|--|
| From<br>(ft)        | To<br>(ft) | Survey (Wellbore) | Tool Name | Description |  |
| 0.0                 | 11,356.1   | Plan #1 (DD)      | MWD       | Geolink MWD |  |

| Summary                                       |                               |                            |                               |                                |                   |            |
|-----------------------------------------------|-------------------------------|----------------------------|-------------------------------|--------------------------------|-------------------|------------|
| Site Name                                     | Reference Measured Depth (ft) | Offset Measured Depth (ft) | Distance Between Centres (ft) | Distance Between Ellipses (ft) | Separation Factor | Warning    |
| Offset Well - Wellbore - Design               |                               |                            |                               |                                |                   |            |
| SWSW S32-T5S-R95W (M32 595 Pad)               |                               |                            |                               |                                |                   |            |
| Milk Cabin OM11B (M32 595 Pad) - DD - Plan #1 | 200.0                         | 200.0                      | 30.0                          | 29.4                           | 48.557            | CC, ES     |
| Milk Cabin OM11B (M32 595 Pad) - DD - Plan #1 | 1,000.0                       | 990.8                      | 98.3                          | 93.2                           | 19.146            | SF         |
| Milk Cabin OM11D (M32 595 Pad) - DD - Plan #1 | 200.0                         | 200.0                      | 19.7                          | 19.1                           | 31.878            | CC, ES     |
| Milk Cabin OM11D (M32 595 Pad) - DD - Plan #1 | 1,600.0                       | 1,597.1                    | 82.8                          | 72.7                           | 8.220             | SF         |
| Milk Cabin OM12A (M32 595 Pad) - DD - Plan #1 | 200.0                         | 200.0                      | 40.1                          | 39.5                           | 64.955            | CC, ES     |
| Milk Cabin OM12A (M32 595 Pad) - DD - Plan #1 | 700.0                         | 689.8                      | 83.8                          | 81.0                           | 30.203            | SF         |
| Milk Cabin OM12B (M32 595 Pad) - DD - Plan #1 | 200.0                         | 200.0                      | 69.6                          | 69.0                           | 112.669           | CC, ES     |
| Milk Cabin OM12B (M32 595 Pad) - DD - Plan #1 | 500.0                         | 491.8                      | 86.4                          | 84.7                           | 49.815            | SF         |
| Milk Cabin OM12C (M32 595 Pad) - DD - Plan #1 | 200.0                         | 200.0                      | 79.7                          | 79.1                           | 129.069           | CC, ES     |
| Milk Cabin OM12C (M32 595 Pad) - DD - Plan #1 | 500.0                         | 490.2                      | 97.3                          | 95.6                           | 56.501            | SF         |
| Milk Cabin OM12D (M32 595 Pad) - DD - Plan #1 | 200.0                         | 200.0                      | 50.3                          | 49.6                           | 81.359            | CC, ES     |
| Milk Cabin OM12D (M32 595 Pad) - DD - Plan #1 | 700.0                         | 686.6                      | 97.7                          | 95.0                           | 35.894            | SF         |
| Milk Cabin OM13A (M32 595 Pad) - DD - Plan #1 | 200.0                         | 200.0                      | 59.8                          | 59.2                           | 96.838            | CC, ES     |
| Milk Cabin OM13A (M32 595 Pad) - DD - Plan #1 | 600.0                         | 587.3                      | 94.5                          | 92.3                           | 44.188            | SF         |
| Milk Cabin OM13B (M32 595 Pad) - DD - Plan #1 | 200.0                         | 200.0                      | 9.3                           | 8.7                            | 15.031            | CC, ES     |
| Milk Cabin OM13B (M32 595 Pad) - DD - Plan #1 | 300.0                         | 299.6                      | 11.4                          | 10.4                           | 11.741            | SF         |
| Milk Cabin OM13C (M32 595 Pad) - DD - Plan #1 | 303.6                         | 303.7                      | 9.5                           | 8.5                            | 9.597             | CC, ES, SF |
| Milk Cabin OM13D (M32 595 Pad) - DD - Plan #1 | 263.6                         | 263.6                      | 20.5                          | 19.7                           | 24.290            | CC         |
| Milk Cabin OM13D (M32 595 Pad) - DD - Plan #1 | 300.0                         | 299.9                      | 20.6                          | 19.6                           | 21.154            | ES         |
| Milk Cabin OM13D (M32 595 Pad) - DD - Plan #1 | 400.0                         | 399.2                      | 24.0                          | 22.7                           | 17.789            | SF         |
| Milk Cabin OM14D (M32 595 Pad) - DD - Plan #1 | 200.0                         | 200.0                      | 30.9                          | 30.2                           | 49.949            | CC, ES     |
| Milk Cabin OM14D (M32 595 Pad) - DD - Plan #1 | 1,000.0                       | 991.0                      | 97.2                          | 92.1                           | 19.156            | SF         |

# Cathedral Energy Services

## Anticollision Report

|                           |                                  |                                     |                                     |
|---------------------------|----------------------------------|-------------------------------------|-------------------------------------|
| <b>Company:</b>           | Berry Petroleum Company (NAD 83) | <b>Local Co-ordinate Reference:</b> | Well Milk Cabin OM14B (M32 595 Pad) |
| <b>Project:</b>           | Garfield County                  | <b>TVD Reference:</b>               | KBE @ 8144.0ft (Original Well Elev) |
| <b>Reference Site:</b>    | SWSW S32-T5S-R95W (M32 595 Pad)  | <b>MD Reference:</b>                | KBE @ 8144.0ft (Original Well Elev) |
| <b>Site Error:</b>        | 0.0ft                            | <b>North Reference:</b>             | True                                |
| <b>Reference Well:</b>    | Milk Cabin OM14B (M32 595 Pad)   | <b>Survey Calculation Method:</b>   | Minimum Curvature                   |
| <b>Well Error:</b>        | 0.0ft                            | <b>Output errors are at</b>         | 2.00 sigma                          |
| <b>Reference Wellbore</b> | DD                               | <b>Database:</b>                    | EDM 5000.1 US Multi Users DB        |
| <b>Reference Design:</b>  | Plan #1                          | <b>Offset TVD Reference:</b>        | Offset Datum                        |

| <b>Offset Design</b> SWSW S32-T5S-R95W (M32 595 Pad) - Milk Cabin OM11B (M32 595 Pad) - DD - Plan #1 |                     |                     |                     |                 |             |                       |                                   |            |                      |                       |                        |                   | <b>Offset Site Error:</b> | 0.0 ft |
|------------------------------------------------------------------------------------------------------|---------------------|---------------------|---------------------|-----------------|-------------|-----------------------|-----------------------------------|------------|----------------------|-----------------------|------------------------|-------------------|---------------------------|--------|
| Survey Program: 0-MWD                                                                                |                     |                     |                     |                 |             |                       |                                   |            |                      |                       |                        |                   | <b>Offset Well Error:</b> | 0.0 ft |
| Reference                                                                                            |                     | Offset              |                     | Semi Major Axis |             |                       | Distance                          |            |                      |                       |                        |                   | Warning                   |        |
| Measured Depth (ft)                                                                                  | Vertical Depth (ft) | Measured Depth (ft) | Vertical Depth (ft) | Reference (ft)  | Offset (ft) | Highside Toolface (°) | Offset Wellbore Centre +N/-S (ft) | +E/-W (ft) | Between Centres (ft) | Between Ellipses (ft) | Total Uncertainty Axis | Separation Factor |                           |        |
| 0.0                                                                                                  | 0.0                 | 0.0                 | 0.0                 | 0.0             | 0.0         | -39.02                | 23.3                              | -18.9      | 30.0                 |                       |                        |                   |                           |        |
| 100.0                                                                                                | 100.0               | 100.0               | 100.0               | 0.1             | 0.1         | -39.02                | 23.3                              | -18.9      | 30.0                 | 29.7                  | 0.27                   | 111.617           |                           |        |
| 200.0                                                                                                | 200.0               | 200.0               | 200.0               | 0.3             | 0.3         | -39.02                | 23.3                              | -18.9      | 30.0                 | 29.4                  | 0.62                   | 48.557 CC, ES     |                           |        |
| 300.0                                                                                                | 300.0               | 299.4               | 299.4               | 0.5             | 0.5         | -95.34                | 24.9                              | -18.3      | 31.1                 | 30.1                  | 0.97                   | 31.970            |                           |        |
| 400.0                                                                                                | 399.8               | 398.8               | 398.6               | 0.7             | 0.7         | -96.62                | 29.9                              | -16.7      | 34.4                 | 33.0                  | 1.36                   | 25.329            |                           |        |
| 500.0                                                                                                | 499.5               | 498.0               | 497.4               | 0.9             | 0.9         | -98.27                | 38.0                              | -14.0      | 39.8                 | 38.0                  | 1.79                   | 22.201            |                           |        |
| 600.0                                                                                                | 598.7               | 597.0               | 595.7               | 1.2             | 1.2         | -99.92                | 49.4                              | -10.3      | 47.5                 | 45.2                  | 2.31                   | 20.612            |                           |        |
| 700.0                                                                                                | 697.5               | 695.6               | 693.2               | 1.5             | 1.5         | -101.35               | 63.9                              | -5.5       | 57.5                 | 54.6                  | 2.91                   | 19.770            |                           |        |
| 800.0                                                                                                | 795.6               | 794.0               | 789.7               | 1.9             | 1.8         | -102.51               | 81.6                              | 0.3        | 69.6                 | 66.0                  | 3.60                   | 19.312            |                           |        |
| 810.1                                                                                                | 805.5               | 803.9               | 799.4               | 1.9             | 1.9         | -102.61               | 83.5                              | 0.9        | 70.9                 | 67.2                  | 3.68                   | 19.292            |                           |        |
| 900.0                                                                                                | 893.4               | 891.9               | 885.2               | 2.3             | 2.3         | -102.71               | 102.3                             | 7.1        | 83.6                 | 79.2                  | 4.36                   | 19.167            |                           |        |
| 1,000.0                                                                                              | 991.1               | 990.8               | 981.2               | 2.7             | 2.7         | -101.90               | 124.9                             | 14.6       | 98.3                 | 93.2                  | 5.13                   | 19.146 SF         |                           |        |

# Cathedral Energy Services

## Anticollision Report

|                           |                                  |                                     |                                     |
|---------------------------|----------------------------------|-------------------------------------|-------------------------------------|
| <b>Company:</b>           | Berry Petroleum Company (NAD 83) | <b>Local Co-ordinate Reference:</b> | Well Milk Cabin OM14B (M32 595 Pad) |
| <b>Project:</b>           | Garfield County                  | <b>TVD Reference:</b>               | KBE @ 8144.0ft (Original Well Elev) |
| <b>Reference Site:</b>    | SWSW S32-T5S-R95W (M32 595 Pad)  | <b>MD Reference:</b>                | KBE @ 8144.0ft (Original Well Elev) |
| <b>Site Error:</b>        | 0.0ft                            | <b>North Reference:</b>             | True                                |
| <b>Reference Well:</b>    | Milk Cabin OM14B (M32 595 Pad)   | <b>Survey Calculation Method:</b>   | Minimum Curvature                   |
| <b>Well Error:</b>        | 0.0ft                            | <b>Output errors are at</b>         | 2.00 sigma                          |
| <b>Reference Wellbore</b> | DD                               | <b>Database:</b>                    | EDM 5000.1 US Multi Users DB        |
| <b>Reference Design:</b>  | Plan #1                          | <b>Offset TVD Reference:</b>        | Offset Datum                        |

| Offset Design SWSW S32-T5S-R95W (M32 595 Pad) - Milk Cabin OM11D (M32 595 Pad) - DD - Plan #1 |                     |                     |                     |                 |             |                       |                                   |            |                      |                       |                        |                   | Offset Site Error: | 0.0 ft |
|-----------------------------------------------------------------------------------------------|---------------------|---------------------|---------------------|-----------------|-------------|-----------------------|-----------------------------------|------------|----------------------|-----------------------|------------------------|-------------------|--------------------|--------|
| Survey Program: 0-MWD                                                                         |                     |                     |                     |                 |             |                       |                                   |            |                      |                       |                        |                   | Offset Well Error: | 0.0 ft |
| Reference                                                                                     |                     | Offset              |                     | Semi Major Axis |             |                       | Distance                          |            |                      |                       |                        |                   | Warning            |        |
| Measured Depth (ft)                                                                           | Vertical Depth (ft) | Measured Depth (ft) | Vertical Depth (ft) | Reference (ft)  | Offset (ft) | Highside Toolface (°) | Offset Wellbore Centre +N/-S (ft) | +E/-W (ft) | Between Centres (ft) | Between Ellipses (ft) | Total Uncertainty Axis | Separation Factor |                    |        |
| 0.0                                                                                           | 0.0                 | 0.0                 | 0.0                 | 0.0             | 0.0         | -39.04                | 15.3                              | -12.4      | 19.7                 |                       |                        |                   |                    |        |
| 100.0                                                                                         | 100.0               | 100.0               | 100.0               | 0.1             | 0.1         | -39.04                | 15.3                              | -12.4      | 19.7                 | 19.4                  | 0.27                   | 73.278            |                    |        |
| 200.0                                                                                         | 200.0               | 200.0               | 200.0               | 0.3             | 0.3         | -39.04                | 15.3                              | -12.4      | 19.7                 | 19.1                  | 0.62                   | 31.878 CC, ES     |                    |        |
| 300.0                                                                                         | 300.0               | 299.9               | 299.9               | 0.5             | 0.5         | -94.90                | 16.6                              | -11.2      | 20.1                 | 19.1                  | 0.97                   | 20.642            |                    |        |
| 400.0                                                                                         | 399.8               | 399.8               | 399.6               | 0.7             | 0.7         | -95.00                | 20.5                              | -7.7       | 21.4                 | 20.0                  | 1.36                   | 15.649            |                    |        |
| 500.0                                                                                         | 499.5               | 499.6               | 499.1               | 0.9             | 0.9         | -95.15                | 26.9                              | -1.9       | 23.4                 | 21.6                  | 1.82                   | 12.903            |                    |        |
| 600.0                                                                                         | 598.7               | 599.5               | 598.2               | 1.2             | 1.2         | -95.31                | 35.9                              | 6.3        | 26.3                 | 24.0                  | 2.35                   | 11.209            |                    |        |
| 700.0                                                                                         | 697.5               | 699.3               | 696.7               | 1.5             | 1.5         | -95.46                | 47.5                              | 16.7       | 30.0                 | 27.1                  | 2.98                   | 10.087            |                    |        |
| 800.0                                                                                         | 795.6               | 799.0               | 794.7               | 1.9             | 1.9         | -95.59                | 61.6                              | 29.5       | 34.6                 | 30.9                  | 3.72                   | 9.307             |                    |        |
| 810.1                                                                                         | 805.5               | 809.0               | 804.5               | 1.9             | 1.9         | -95.60                | 63.1                              | 30.9       | 35.1                 | 31.3                  | 3.80                   | 9.242             |                    |        |
| 900.0                                                                                         | 893.4               | 898.7               | 891.8               | 2.3             | 2.3         | -93.76                | 78.1                              | 44.5       | 39.8                 | 35.3                  | 4.52                   | 8.804             |                    |        |
| 1,000.0                                                                                       | 991.1               | 998.4               | 988.4               | 2.7             | 2.7         | -89.55                | 96.4                              | 61.0       | 45.6                 | 40.2                  | 5.34                   | 8.539             |                    |        |
| 1,100.0                                                                                       | 1,088.9             | 1,098.2             | 1,085.1             | 3.1             | 3.2         | -86.24                | 114.7                             | 77.6       | 51.5                 | 45.4                  | 6.14                   | 8.389             |                    |        |
| 1,200.0                                                                                       | 1,186.6             | 1,198.0             | 1,181.8             | 3.5             | 3.6         | -83.62                | 133.0                             | 94.2       | 57.6                 | 50.7                  | 6.94                   | 8.304             |                    |        |
| 1,300.0                                                                                       | 1,284.3             | 1,297.8             | 1,278.5             | 3.9             | 4.1         | -81.50                | 151.3                             | 110.7      | 63.8                 | 56.1                  | 7.73                   | 8.256             |                    |        |
| 1,400.0                                                                                       | 1,382.1             | 1,397.5             | 1,375.1             | 4.3             | 4.6         | -79.76                | 169.6                             | 127.3      | 70.1                 | 61.6                  | 8.51                   | 8.232             |                    |        |
| 1,500.0                                                                                       | 1,479.8             | 1,497.3             | 1,471.8             | 4.7             | 5.0         | -78.31                | 187.9                             | 143.9      | 76.4                 | 67.1                  | 9.29                   | 8.221             |                    |        |
| 1,600.0                                                                                       | 1,577.6             | 1,597.1             | 1,568.5             | 5.1             | 5.5         | -77.08                | 206.2                             | 160.5      | 82.8                 | 72.7                  | 10.07                  | 8.220 SF          |                    |        |
| 1,700.0                                                                                       | 1,675.3             | 1,696.9             | 1,665.2             | 5.5             | 6.0         | -76.03                | 224.5                             | 177.0      | 89.1                 | 78.3                  | 10.84                  | 8.225             |                    |        |
| 1,800.0                                                                                       | 1,773.0             | 1,796.7             | 1,761.9             | 5.9             | 6.4         | -75.11                | 242.8                             | 193.6      | 95.6                 | 84.0                  | 11.61                  | 8.233             |                    |        |

# Cathedral Energy Services

## Anticollision Report

|                           |                                  |                                     |                                     |
|---------------------------|----------------------------------|-------------------------------------|-------------------------------------|
| <b>Company:</b>           | Berry Petroleum Company (NAD 83) | <b>Local Co-ordinate Reference:</b> | Well Milk Cabin OM14B (M32 595 Pad) |
| <b>Project:</b>           | Garfield County                  | <b>TVD Reference:</b>               | KBE @ 8144.0ft (Original Well Elev) |
| <b>Reference Site:</b>    | SWSW S32-T5S-R95W (M32 595 Pad)  | <b>MD Reference:</b>                | KBE @ 8144.0ft (Original Well Elev) |
| <b>Site Error:</b>        | 0.0ft                            | <b>North Reference:</b>             | True                                |
| <b>Reference Well:</b>    | Milk Cabin OM14B (M32 595 Pad)   | <b>Survey Calculation Method:</b>   | Minimum Curvature                   |
| <b>Well Error:</b>        | 0.0ft                            | <b>Output errors are at</b>         | 2.00 sigma                          |
| <b>Reference Wellbore</b> | DD                               | <b>Database:</b>                    | EDM 5000.1 US Multi Users DB        |
| <b>Reference Design:</b>  | Plan #1                          | <b>Offset TVD Reference:</b>        | Offset Datum                        |

| <b>Offset Design</b> SWSW S32-T5S-R95W (M32 595 Pad) - Milk Cabin OM12A (M32 595 Pad) - DD - Plan #1 |                        |                        |                        |                   |                |                          |                                         |               |                         |                          |                           |                   | <b>Offset Site Error:</b> | 0.0 ft |
|------------------------------------------------------------------------------------------------------|------------------------|------------------------|------------------------|-------------------|----------------|--------------------------|-----------------------------------------|---------------|-------------------------|--------------------------|---------------------------|-------------------|---------------------------|--------|
| Survey Program: 0-MWD                                                                                |                        |                        |                        |                   |                |                          |                                         |               |                         |                          |                           |                   | <b>Offset Well Error:</b> | 0.0 ft |
| Reference                                                                                            |                        | Offset                 |                        | Semi Major Axis   |                |                          | Distance                                |               |                         |                          |                           |                   | Warning                   |        |
| Measured Depth<br>(ft)                                                                               | Vertical Depth<br>(ft) | Measured Depth<br>(ft) | Vertical Depth<br>(ft) | Reference<br>(ft) | Offset<br>(ft) | Highside Toolface<br>(°) | Offset Wellbore Centre<br>+N/-S<br>(ft) | +E/-W<br>(ft) | Between Centres<br>(ft) | Between Ellipses<br>(ft) | Total Uncertainty<br>Axis | Separation Factor |                           |        |
| 0.0                                                                                                  | 0.0                    | 0.0                    | 0.0                    | 0.0               | 0.0            | -38.70                   | 31.3                                    | -25.1         | 40.1                    |                          |                           |                   |                           |        |
| 100.0                                                                                                | 100.0                  | 100.0                  | 100.0                  | 0.1               | 0.1            | -38.70                   | 31.3                                    | -25.1         | 40.1                    | 39.9                     | 0.27                      | 149.311           |                           |        |
| 200.0                                                                                                | 200.0                  | 200.0                  | 200.0                  | 0.3               | 0.3            | -38.70                   | 31.3                                    | -25.1         | 40.1                    | 39.5                     | 0.62                      | 64.955 CC, ES     |                           |        |
| 300.0                                                                                                | 300.0                  | 298.8                  | 298.7                  | 0.5               | 0.5            | -95.70                   | 33.0                                    | -25.4         | 41.8                    | 40.8                     | 0.97                      | 43.095            |                           |        |
| 400.0                                                                                                | 399.8                  | 397.3                  | 397.2                  | 0.7               | 0.7            | -98.73                   | 38.0                                    | -26.2         | 46.8                    | 45.5                     | 1.34                      | 34.859            |                           |        |
| 500.0                                                                                                | 499.5                  | 495.5                  | 494.9                  | 0.9               | 0.9            | -102.50                  | 46.3                                    | -27.6         | 55.4                    | 53.7                     | 1.76                      | 31.530            |                           |        |
| 600.0                                                                                                | 598.7                  | 593.0                  | 591.8                  | 1.2               | 1.2            | -106.09                  | 57.9                                    | -29.5         | 67.7                    | 65.5                     | 2.23                      | 30.363            |                           |        |
| 700.0                                                                                                | 697.5                  | 689.8                  | 687.4                  | 1.5               | 1.5            | -109.09                  | 72.5                                    | -31.9         | 83.8                    | 81.0                     | 2.77                      | 30.203 SF         |                           |        |

# Cathedral Energy Services

## Anticollision Report

|                           |                                  |                                     |                                     |
|---------------------------|----------------------------------|-------------------------------------|-------------------------------------|
| <b>Company:</b>           | Berry Petroleum Company (NAD 83) | <b>Local Co-ordinate Reference:</b> | Well Milk Cabin OM14B (M32 595 Pad) |
| <b>Project:</b>           | Garfield County                  | <b>TVD Reference:</b>               | KBE @ 8144.0ft (Original Well Elev) |
| <b>Reference Site:</b>    | SWSW S32-T5S-R95W (M32 595 Pad)  | <b>MD Reference:</b>                | KBE @ 8144.0ft (Original Well Elev) |
| <b>Site Error:</b>        | 0.0ft                            | <b>North Reference:</b>             | True                                |
| <b>Reference Well:</b>    | Milk Cabin OM14B (M32 595 Pad)   | <b>Survey Calculation Method:</b>   | Minimum Curvature                   |
| <b>Well Error:</b>        | 0.0ft                            | <b>Output errors are at</b>         | 2.00 sigma                          |
| <b>Reference Wellbore</b> | DD                               | <b>Database:</b>                    | EDM 5000.1 US Multi Users DB        |
| <b>Reference Design:</b>  | Plan #1                          | <b>Offset TVD Reference:</b>        | Offset Datum                        |

|                                                                                                      |                        |                        |                        |                   |                |                          |                                         |               |                         |                          |                           |                   |                           |        |
|------------------------------------------------------------------------------------------------------|------------------------|------------------------|------------------------|-------------------|----------------|--------------------------|-----------------------------------------|---------------|-------------------------|--------------------------|---------------------------|-------------------|---------------------------|--------|
| <b>Offset Design</b> SWSW S32-T5S-R95W (M32 595 Pad) - Milk Cabin OM12B (M32 595 Pad) - DD - Plan #1 |                        |                        |                        |                   |                |                          |                                         |               |                         |                          |                           |                   | <b>Offset Site Error:</b> | 0.0 ft |
| Survey Program: 0-MWD                                                                                |                        |                        |                        |                   |                |                          |                                         |               |                         |                          |                           |                   | <b>Offset Well Error:</b> | 0.0 ft |
| Reference                                                                                            |                        | Offset                 |                        | Semi Major Axis   |                |                          | Distance                                |               |                         |                          |                           |                   | Warning                   |        |
| Measured Depth<br>(ft)                                                                               | Vertical Depth<br>(ft) | Measured Depth<br>(ft) | Vertical Depth<br>(ft) | Reference<br>(ft) | Offset<br>(ft) | Highside Toolface<br>(°) | Offset Wellbore Centre<br>+N/-S<br>(ft) | +E/-W<br>(ft) | Between Centres<br>(ft) | Between Ellipses<br>(ft) | Total Uncertainty<br>Axis | Separation Factor |                           |        |
| 0.0                                                                                                  | 0.0                    | 0.0                    | 0.0                    | 0.0               | 0.0            | -38.29                   | 54.6                                    | -43.1         | 69.6                    |                          |                           |                   |                           |        |
| 100.0                                                                                                | 100.0                  | 100.0                  | 100.0                  | 0.1               | 0.1            | -38.29                   | 54.6                                    | -43.1         | 69.6                    | 69.3                     | 0.27                      | 258.991           |                           |        |
| 200.0                                                                                                | 200.0                  | 200.0                  | 200.0                  | 0.3               | 0.3            | -38.29                   | 54.6                                    | -43.1         | 69.6                    | 69.0                     | 0.62                      | 112.669 CC, ES    |                           |        |
| 300.0                                                                                                | 300.0                  | 297.6                  | 297.6                  | 0.5               | 0.5            | -95.13                   | 56.2                                    | -43.8         | 71.4                    | 70.4                     | 0.97                      | 73.850            |                           |        |
| 400.0                                                                                                | 399.8                  | 395.0                  | 394.9                  | 0.7               | 0.7            | -97.85                   | 60.7                                    | -45.9         | 76.9                    | 75.6                     | 1.33                      | 57.649            |                           |        |
| 500.0                                                                                                | 499.5                  | 491.8                  | 491.3                  | 0.9               | 0.9            | -101.58                  | 68.2                                    | -49.3         | 86.4                    | 84.7                     | 1.73                      | 49.815 SF         |                           |        |

# Cathedral Energy Services

## Anticollision Report

|                           |                                  |                                     |                                     |
|---------------------------|----------------------------------|-------------------------------------|-------------------------------------|
| <b>Company:</b>           | Berry Petroleum Company (NAD 83) | <b>Local Co-ordinate Reference:</b> | Well Milk Cabin OM14B (M32 595 Pad) |
| <b>Project:</b>           | Garfield County                  | <b>TVD Reference:</b>               | KBE @ 8144.0ft (Original Well Elev) |
| <b>Reference Site:</b>    | SWSW S32-T5S-R95W (M32 595 Pad)  | <b>MD Reference:</b>                | KBE @ 8144.0ft (Original Well Elev) |
| <b>Site Error:</b>        | 0.0ft                            | <b>North Reference:</b>             | True                                |
| <b>Reference Well:</b>    | Milk Cabin OM14B (M32 595 Pad)   | <b>Survey Calculation Method:</b>   | Minimum Curvature                   |
| <b>Well Error:</b>        | 0.0ft                            | <b>Output errors are at</b>         | 2.00 sigma                          |
| <b>Reference Wellbore</b> | DD                               | <b>Database:</b>                    | EDM 5000.1 US Multi Users DB        |
| <b>Reference Design:</b>  | Plan #1                          | <b>Offset TVD Reference:</b>        | Offset Datum                        |

| <b>Offset Design</b> SWSW S32-T5S-R95W (M32 595 Pad) - Milk Cabin OM12C (M32 595 Pad) - DD - Plan #1 |                        |                        |                        |                   |                |                          |                                         |               |                         |                          |                           |                   | <b>Offset Site Error:</b> 0.0 ft |
|------------------------------------------------------------------------------------------------------|------------------------|------------------------|------------------------|-------------------|----------------|--------------------------|-----------------------------------------|---------------|-------------------------|--------------------------|---------------------------|-------------------|----------------------------------|
| Survey Program: 0-MWD                                                                                |                        |                        |                        |                   |                |                          |                                         |               |                         |                          |                           |                   | <b>Offset Well Error:</b> 0.0 ft |
| Reference                                                                                            |                        | Offset                 |                        | Semi Major Axis   |                |                          | Distance                                |               |                         |                          |                           | Separation Factor | Warning                          |
| Measured Depth<br>(ft)                                                                               | Vertical Depth<br>(ft) | Measured Depth<br>(ft) | Vertical Depth<br>(ft) | Reference<br>(ft) | Offset<br>(ft) | Highside Toolface<br>(°) | Offset Wellbore Centre<br>+N/-S<br>(ft) | +E/-W<br>(ft) | Between Centres<br>(ft) | Between Ellipses<br>(ft) | Total Uncertainty<br>Axis |                   |                                  |
| 0.0                                                                                                  | 0.0                    | 0.0                    | 0.0                    | 0.0               | 0.0            | -38.22                   | 62.7                                    | -49.3         | 79.7                    |                          |                           |                   |                                  |
| 100.0                                                                                                | 100.0                  | 100.0                  | 100.0                  | 0.1               | 0.1            | -38.22                   | 62.7                                    | -49.3         | 79.7                    | 79.5                     | 0.27                      | 296.691           |                                  |
| 200.0                                                                                                | 200.0                  | 200.0                  | 200.0                  | 0.3               | 0.3            | -38.22                   | 62.7                                    | -49.3         | 79.7                    | 79.1                     | 0.62                      | 129.069 CC, ES    |                                  |
| 300.0                                                                                                | 300.0                  | 297.2                  | 297.2                  | 0.5               | 0.5            | -95.21                   | 63.9                                    | -50.4         | 81.6                    | 80.6                     | 0.97                      | 84.463            |                                  |
| 400.0                                                                                                | 399.8                  | 394.1                  | 393.9                  | 0.7               | 0.7            | -98.39                   | 67.8                                    | -53.5         | 87.3                    | 86.0                     | 1.33                      | 65.620            |                                  |
| 500.0                                                                                                | 499.5                  | 490.2                  | 489.7                  | 0.9               | 0.9            | -102.78                  | 74.1                                    | -58.5         | 97.3                    | 95.6                     | 1.72                      | 56.501 SF         |                                  |

# Cathedral Energy Services

## Anticollision Report

|                           |                                  |                                     |                                     |
|---------------------------|----------------------------------|-------------------------------------|-------------------------------------|
| <b>Company:</b>           | Berry Petroleum Company (NAD 83) | <b>Local Co-ordinate Reference:</b> | Well Milk Cabin OM14B (M32 595 Pad) |
| <b>Project:</b>           | Garfield County                  | <b>TVD Reference:</b>               | KBE @ 8144.0ft (Original Well Elev) |
| <b>Reference Site:</b>    | SWSW S32-T5S-R95W (M32 595 Pad)  | <b>MD Reference:</b>                | KBE @ 8144.0ft (Original Well Elev) |
| <b>Site Error:</b>        | 0.0ft                            | <b>North Reference:</b>             | True                                |
| <b>Reference Well:</b>    | Milk Cabin OM14B (M32 595 Pad)   | <b>Survey Calculation Method:</b>   | Minimum Curvature                   |
| <b>Well Error:</b>        | 0.0ft                            | <b>Output errors are at</b>         | 2.00 sigma                          |
| <b>Reference Wellbore</b> | DD                               | <b>Database:</b>                    | EDM 5000.1 US Multi Users DB        |
| <b>Reference Design:</b>  | Plan #1                          | <b>Offset TVD Reference:</b>        | Offset Datum                        |

| <b>Offset Design</b> SWSW S32-T5S-R95W (M32 595 Pad) - Milk Cabin OM12D (M32 595 Pad) - DD - Plan #1 |                        |                        |                        |                   |                |                             |                                         |               |                            |                             |                              |                      | <b>Offset Site Error:</b> | 0.0 ft |
|------------------------------------------------------------------------------------------------------|------------------------|------------------------|------------------------|-------------------|----------------|-----------------------------|-----------------------------------------|---------------|----------------------------|-----------------------------|------------------------------|----------------------|---------------------------|--------|
| Survey Program: 0-MWD                                                                                |                        |                        |                        |                   |                |                             |                                         |               |                            |                             |                              |                      | <b>Offset Well Error:</b> | 0.0 ft |
| Reference                                                                                            |                        | Offset                 |                        | Semi Major Axis   |                |                             | Distance                                |               |                            |                             |                              |                      |                           |        |
| Measured Depth<br>(ft)                                                                               | Vertical Depth<br>(ft) | Measured Depth<br>(ft) | Vertical Depth<br>(ft) | Reference<br>(ft) | Offset<br>(ft) | Highside<br>Toolface<br>(°) | Offset Wellbore Centre<br>+N/-S<br>(ft) | +E/-W<br>(ft) | Between<br>Centres<br>(ft) | Between<br>Ellipses<br>(ft) | Total<br>Uncertainty<br>Axis | Separation<br>Factor | Warning                   |        |
| 0.0                                                                                                  | 0.0                    | 0.0                    | 0.0                    | 0.0               | 0.0            | -38.50                      | 39.3                                    | -31.3         | 50.3                       |                             |                              |                      |                           |        |
| 100.0                                                                                                | 100.0                  | 100.0                  | 100.0                  | 0.1               | 0.1            | -38.50                      | 39.3                                    | -31.3         | 50.3                       | 50.0                        | 0.27                         | 187.021              |                           |        |
| 200.0                                                                                                | 200.0                  | 200.0                  | 200.0                  | 0.3               | 0.3            | -38.50                      | 39.3                                    | -31.3         | 50.3                       | 49.6                        | 0.62                         | 81.359 CC, ES        |                           |        |
| 300.0                                                                                                | 300.0                  | 298.3                  | 298.3                  | 0.5               | 0.5            | -95.54                      | 40.9                                    | -31.8         | 52.0                       | 51.1                        | 0.97                         | 53.727               |                           |        |
| 400.0                                                                                                | 399.8                  | 396.4                  | 396.3                  | 0.7               | 0.7            | -98.72                      | 45.7                                    | -33.4         | 57.4                       | 56.1                        | 1.34                         | 42.906               |                           |        |
| 500.0                                                                                                | 499.5                  | 494.0                  | 493.5                  | 0.9               | 0.9            | -102.82                     | 53.6                                    | -36.1         | 66.7                       | 65.0                        | 1.74                         | 38.240               |                           |        |
| 600.0                                                                                                | 598.7                  | 590.8                  | 589.6                  | 1.2               | 1.2            | -106.87                     | 64.6                                    | -39.7         | 80.1                       | 77.9                        | 2.20                         | 36.380               |                           |        |
| 700.0                                                                                                | 697.5                  | 686.6                  | 684.3                  | 1.5               | 1.5            | -110.36                     | 78.4                                    | -44.4         | 97.7                       | 95.0                        | 2.72                         | 35.894 SF            |                           |        |

# Cathedral Energy Services

## Anticollision Report

|                           |                                  |                                     |                                     |
|---------------------------|----------------------------------|-------------------------------------|-------------------------------------|
| <b>Company:</b>           | Berry Petroleum Company (NAD 83) | <b>Local Co-ordinate Reference:</b> | Well Milk Cabin OM14B (M32 595 Pad) |
| <b>Project:</b>           | Garfield County                  | <b>TVD Reference:</b>               | KBE @ 8144.0ft (Original Well Elev) |
| <b>Reference Site:</b>    | SWSW S32-T5S-R95W (M32 595 Pad)  | <b>MD Reference:</b>                | KBE @ 8144.0ft (Original Well Elev) |
| <b>Site Error:</b>        | 0.0ft                            | <b>North Reference:</b>             | True                                |
| <b>Reference Well:</b>    | Milk Cabin OM14B (M32 595 Pad)   | <b>Survey Calculation Method:</b>   | Minimum Curvature                   |
| <b>Well Error:</b>        | 0.0ft                            | <b>Output errors are at</b>         | 2.00 sigma                          |
| <b>Reference Wellbore</b> | DD                               | <b>Database:</b>                    | EDM 5000.1 US Multi Users DB        |
| <b>Reference Design:</b>  | Plan #1                          | <b>Offset TVD Reference:</b>        | Offset Datum                        |

| <b>Offset Design</b> SWSW S32-T5S-R95W (M32 595 Pad) - Milk Cabin OM13A (M32 595 Pad) - DD - Plan #1 |                        |                        |                        |                   |                |                             |                                         |               |                            |                             |                              |                      | <b>Offset Site Error:</b> | 0.0 ft |
|------------------------------------------------------------------------------------------------------|------------------------|------------------------|------------------------|-------------------|----------------|-----------------------------|-----------------------------------------|---------------|----------------------------|-----------------------------|------------------------------|----------------------|---------------------------|--------|
| Survey Program: 0-MWD                                                                                |                        |                        |                        |                   |                |                             |                                         |               |                            |                             |                              |                      | <b>Offset Well Error:</b> | 0.0 ft |
| Reference                                                                                            |                        | Offset                 |                        | Semi Major Axis   |                |                             | Distance                                |               |                            |                             |                              |                      | Warning                   |        |
| Measured Depth<br>(ft)                                                                               | Vertical Depth<br>(ft) | Measured Depth<br>(ft) | Vertical Depth<br>(ft) | Reference<br>(ft) | Offset<br>(ft) | Highside<br>Toolface<br>(°) | Offset Wellbore Centre<br>+N/-S<br>(ft) | +E/-W<br>(ft) | Between<br>Centres<br>(ft) | Between<br>Ellipses<br>(ft) | Total<br>Uncertainty<br>Axis | Separation<br>Factor |                           |        |
| 0.0                                                                                                  | 0.0                    | 0.0                    | 0.0                    | 0.0               | 0.0            | -38.81                      | 46.6                                    | -37.5         | 59.8                       |                             |                              |                      |                           |        |
| 100.0                                                                                                | 100.0                  | 100.0                  | 100.0                  | 0.1               | 0.1            | -38.81                      | 46.6                                    | -37.5         | 59.8                       | 59.6                        | 0.27                         | 222.601              |                           |        |
| 200.0                                                                                                | 200.0                  | 200.0                  | 200.0                  | 0.3               | 0.3            | -38.81                      | 46.6                                    | -37.5         | 59.8                       | 59.2                        | 0.62                         | 96.838               | CC, ES                    |        |
| 300.0                                                                                                | 300.0                  | 297.9                  | 297.9                  | 0.5               | 0.5            | -96.46                      | 47.7                                    | -38.8         | 61.7                       | 60.7                        | 0.97                         | 63.781               |                           |        |
| 400.0                                                                                                | 399.8                  | 395.4                  | 395.2                  | 0.7               | 0.7            | -101.29                     | 51.0                                    | -42.5         | 67.6                       | 66.3                        | 1.33                         | 50.747               |                           |        |
| 500.0                                                                                                | 499.5                  | 492.0                  | 491.5                  | 0.9               | 0.9            | -107.57                     | 56.3                                    | -48.8         | 78.3                       | 76.6                        | 1.72                         | 45.511               |                           |        |
| 600.0                                                                                                | 598.7                  | 587.3                  | 586.2                  | 1.2               | 1.1            | -113.77                     | 63.7                                    | -57.3         | 94.5                       | 92.3                        | 2.14                         | 44.188               | SF                        |        |



# Cathedral Energy Services

## Anticollision Report

|                           |                                  |                                     |                                     |
|---------------------------|----------------------------------|-------------------------------------|-------------------------------------|
| <b>Company:</b>           | Berry Petroleum Company (NAD 83) | <b>Local Co-ordinate Reference:</b> | Well Milk Cabin OM14B (M32 595 Pad) |
| <b>Project:</b>           | Garfield County                  | <b>TVD Reference:</b>               | KBE @ 8144.0ft (Original Well Elev) |
| <b>Reference Site:</b>    | SWSW S32-T5S-R95W (M32 595 Pad)  | <b>MD Reference:</b>                | KBE @ 8144.0ft (Original Well Elev) |
| <b>Site Error:</b>        | 0.0ft                            | <b>North Reference:</b>             | True                                |
| <b>Reference Well:</b>    | Milk Cabin OM14B (M32 595 Pad)   | <b>Survey Calculation Method:</b>   | Minimum Curvature                   |
| <b>Well Error:</b>        | 0.0ft                            | <b>Output errors are at</b>         | 2.00 sigma                          |
| <b>Reference Wellbore</b> | DD                               | <b>Database:</b>                    | EDM 5000.1 US Multi Users DB        |
| <b>Reference Design:</b>  | Plan #1                          | <b>Offset TVD Reference:</b>        | Offset Datum                        |

|                        |                        |                        |                        |                   |                |                             |                                         |               |                            |                             |                              |                           |         |
|------------------------|------------------------|------------------------|------------------------|-------------------|----------------|-----------------------------|-----------------------------------------|---------------|----------------------------|-----------------------------|------------------------------|---------------------------|---------|
| <b>Offset Design</b>   |                        |                        |                        |                   |                |                             |                                         |               |                            |                             |                              | <b>Offset Site Error:</b> | 0.0 ft  |
| Survey Program: 0-MWD  |                        |                        |                        |                   |                |                             |                                         |               |                            |                             |                              | <b>Offset Well Error:</b> | 0.0 ft  |
| Reference              |                        | Offset                 |                        | Semi Major Axis   |                |                             | Distance                                |               |                            |                             |                              |                           |         |
| Measured Depth<br>(ft) | Vertical Depth<br>(ft) | Measured Depth<br>(ft) | Vertical Depth<br>(ft) | Reference<br>(ft) | Offset<br>(ft) | Highside<br>Toolface<br>(°) | Offset Wellbore Centre<br>+N/-S<br>(ft) | +E/-W<br>(ft) | Between<br>Centres<br>(ft) | Between<br>Ellipses<br>(ft) | Total<br>Uncertainty<br>Axis | Separation<br>Factor      | Warning |
| 0.0                    | 0.0                    | 0.0                    | 0.0                    | 0.0               | 0.0            | -41.90                      | 6.9                                     | -6.2          | 9.3                        |                             |                              |                           |         |
| 100.0                  | 100.0                  | 100.0                  | 100.0                  | 0.1               | 0.1            | -41.90                      | 6.9                                     | -6.2          | 9.3                        | 9.0                         | 0.27                         | 34.552                    |         |
| 200.0                  | 200.0                  | 200.0                  | 200.0                  | 0.3               | 0.3            | -41.90                      | 6.9                                     | -6.2          | 9.3                        | 8.7                         | 0.62                         | 15.031 CC, ES             |         |
| 300.0                  | 300.0                  | 299.6                  | 299.6                  | 0.5               | 0.5            | -109.71                     | 7.7                                     | -7.8          | 11.4                       | 10.4                        | 0.97                         | 11.741 SF                 |         |
| 400.0                  | 399.8                  | 398.7                  | 398.5                  | 0.7               | 0.7            | -127.17                     | 9.9                                     | -12.4         | 19.2                       | 17.8                        | 1.33                         | 14.427                    |         |
| 500.0                  | 499.5                  | 496.7                  | 496.2                  | 0.9               | 0.9            | -136.86                     | 13.7                                    | -20.0         | 33.5                       | 31.8                        | 1.70                         | 19.702                    |         |
| 600.0                  | 598.7                  | 593.1                  | 591.9                  | 1.2               | 1.2            | -141.57                     | 18.8                                    | -30.4         | 54.0                       | 51.9                        | 2.09                         | 25.861                    |         |
| 700.0                  | 697.5                  | 688.6                  | 686.3                  | 1.5               | 1.4            | -144.10                     | 25.1                                    | -43.2         | 80.0                       | 77.5                        | 2.49                         | 32.091                    |         |

# Cathedral Energy Services

## Anticollision Report

|                           |                                  |                                     |                                     |
|---------------------------|----------------------------------|-------------------------------------|-------------------------------------|
| <b>Company:</b>           | Berry Petroleum Company (NAD 83) | <b>Local Co-ordinate Reference:</b> | Well Milk Cabin OM14B (M32 595 Pad) |
| <b>Project:</b>           | Garfield County                  | <b>TVD Reference:</b>               | KBE @ 8144.0ft (Original Well Elev) |
| <b>Reference Site:</b>    | SWSW S32-T5S-R95W (M32 595 Pad)  | <b>MD Reference:</b>                | KBE @ 8144.0ft (Original Well Elev) |
| <b>Site Error:</b>        | 0.0ft                            | <b>North Reference:</b>             | True                                |
| <b>Reference Well:</b>    | Milk Cabin OM14B (M32 595 Pad)   | <b>Survey Calculation Method:</b>   | Minimum Curvature                   |
| <b>Well Error:</b>        | 0.0ft                            | <b>Output errors are at</b>         | 2.00 sigma                          |
| <b>Reference Wellbore</b> | DD                               | <b>Database:</b>                    | EDM 5000.1 US Multi Users DB        |
| <b>Reference Design:</b>  | Plan #1                          | <b>Offset TVD Reference:</b>        | Offset Datum                        |

|                                                                                 |                     |                     |                     |                 |             |                       |                                   |            |                      |                       |                        |                           |         |
|---------------------------------------------------------------------------------|---------------------|---------------------|---------------------|-----------------|-------------|-----------------------|-----------------------------------|------------|----------------------|-----------------------|------------------------|---------------------------|---------|
| <b>Offset Design</b>                                                            |                     |                     |                     |                 |             |                       |                                   |            |                      |                       |                        | <b>Offset Site Error:</b> | 0.0 ft  |
| Survey Program: 0-MWD                                                           |                     |                     |                     |                 |             |                       |                                   |            |                      |                       |                        | <b>Offset Well Error:</b> | 0.0 ft  |
| SWSW S32-T5S-R95W (M32 595 Pad) - Milk Cabin OM13C (M32 595 Pad) - DD - Plan #1 |                     |                     |                     |                 |             |                       |                                   |            |                      |                       |                        |                           |         |
| Reference                                                                       |                     | Offset              |                     | Semi Major Axis |             | Distance              |                                   |            |                      |                       |                        |                           |         |
| Measured Depth (ft)                                                             | Vertical Depth (ft) | Measured Depth (ft) | Vertical Depth (ft) | Reference (ft)  | Offset (ft) | Highside Toolface (°) | Offset Wellbore Centre +N/-S (ft) | +E/-W (ft) | Between Centres (ft) | Between Ellipses (ft) | Total Uncertainty Axis | Separation Factor         | Warning |
| 0.0                                                                             | 0.0                 | 0.0                 | 0.0                 | 0.0             | 0.0         | 142.26                | -8.0                              | 6.2        | 10.1                 |                       |                        |                           |         |
| 100.0                                                                           | 100.0               | 100.0               | 100.0               | 0.1             | 0.1         | 142.26                | -8.0                              | 6.2        | 10.1                 | 9.9                   | 0.27                   | 37.701                    |         |
| 200.0                                                                           | 200.0               | 200.0               | 200.0               | 0.3             | 0.3         | 142.26                | -8.0                              | 6.2        | 10.1                 | 9.5                   | 0.62                   | 16.401                    |         |
| 300.0                                                                           | 300.0               | 300.1               | 300.1               | 0.5             | 0.5         | 105.68                | -8.0                              | 4.5        | 9.5                  | 8.5                   | 0.97                   | 9.735                     |         |
| 303.6                                                                           | 303.5               | 303.7               | 303.6               | 0.5             | 0.5         | 107.14                | -8.0                              | 4.3        | 9.5                  | 8.5                   | 0.99                   | 9.597 CC, ES, SF          |         |
| 400.0                                                                           | 399.8               | 399.5               | 399.4               | 0.7             | 0.7         | 152.71                | -8.0                              | -0.7       | 13.6                 | 12.3                  | 1.34                   | 10.161                    |         |
| 500.0                                                                           | 499.5               | 497.7               | 497.1               | 0.9             | 0.9         | 177.04                | -8.0                              | -9.2       | 28.0                 | 26.3                  | 1.68                   | 16.611                    |         |
| 600.0                                                                           | 598.7               | 593.9               | 592.6               | 1.2             | 1.2         | -173.97               | -8.0                              | -20.8      | 50.2                 | 48.2                  | 2.03                   | 24.725                    |         |
| 700.0                                                                           | 697.5               | 689.8               | 687.7               | 1.5             | 1.4         | -170.28               | -8.0                              | -34.1      | 77.9                 | 75.5                  | 2.38                   | 32.703                    |         |

# Cathedral Energy Services

## Anticollision Report

|                           |                                  |                                     |                                     |
|---------------------------|----------------------------------|-------------------------------------|-------------------------------------|
| <b>Company:</b>           | Berry Petroleum Company (NAD 83) | <b>Local Co-ordinate Reference:</b> | Well Milk Cabin OM14B (M32 595 Pad) |
| <b>Project:</b>           | Garfield County                  | <b>TVD Reference:</b>               | KBE @ 8144.0ft (Original Well Elev) |
| <b>Reference Site:</b>    | SWSW S32-T5S-R95W (M32 595 Pad)  | <b>MD Reference:</b>                | KBE @ 8144.0ft (Original Well Elev) |
| <b>Site Error:</b>        | 0.0ft                            | <b>North Reference:</b>             | True                                |
| <b>Reference Well:</b>    | Milk Cabin OM14B (M32 595 Pad)   | <b>Survey Calculation Method:</b>   | Minimum Curvature                   |
| <b>Well Error:</b>        | 0.0ft                            | <b>Output errors are at</b>         | 2.00 sigma                          |
| <b>Reference Wellbore</b> | DD                               | <b>Database:</b>                    | EDM 5000.1 US Multi Users DB        |
| <b>Reference Design:</b>  | Plan #1                          | <b>Offset TVD Reference:</b>        | Offset Datum                        |

| <b>Offset Design</b> SWSW S32-T5S-R95W (M32 595 Pad) - Milk Cabin OM13D (M32 595 Pad) - DD - Plan #1 |                        |                        |                        |                   |                |                             |                                         |               |                            |                             |                              | <b>Offset Site Error:</b> | 0.0 ft  |
|------------------------------------------------------------------------------------------------------|------------------------|------------------------|------------------------|-------------------|----------------|-----------------------------|-----------------------------------------|---------------|----------------------------|-----------------------------|------------------------------|---------------------------|---------|
| Survey Program: 0-MWD                                                                                |                        |                        |                        |                   |                |                             |                                         |               |                            |                             |                              | <b>Offset Well Error:</b> | 0.0 ft  |
| Reference                                                                                            |                        | Offset                 |                        | Semi Major Axis   |                | Distance                    |                                         |               |                            |                             |                              |                           |         |
| Measured Depth<br>(ft)                                                                               | Vertical Depth<br>(ft) | Measured Depth<br>(ft) | Vertical Depth<br>(ft) | Reference<br>(ft) | Offset<br>(ft) | Highside<br>Toolface<br>(°) | Offset Wellbore Centre<br>+N/-S<br>(ft) | +E/-W<br>(ft) | Between<br>Centres<br>(ft) | Between<br>Ellipses<br>(ft) | Total<br>Uncertainty<br>Axis | Separation<br>Factor      | Warning |
| 0.0                                                                                                  | 0.0                    | 0.0                    | 0.0                    | 0.0               | 0.0            | 142.88                      | -16.4                                   | 12.4          | 20.6                       |                             |                              |                           |         |
| 100.0                                                                                                | 100.0                  | 100.0                  | 100.0                  | 0.1               | 0.1            | 142.88                      | -16.4                                   | 12.4          | 20.6                       | 20.3                        | 0.27                         | 76.479                    |         |
| 200.0                                                                                                | 200.0                  | 200.0                  | 200.0                  | 0.3               | 0.3            | 142.88                      | -16.4                                   | 12.4          | 20.6                       | 19.9                        | 0.62                         | 33.270                    |         |
| 263.6                                                                                                | 263.6                  | 263.6                  | 263.6                  | 0.4               | 0.4            | 91.00                       | -16.8                                   | 11.8          | 20.5                       | 19.7                        | 0.84                         | 24.290 CC                 |         |
| 300.0                                                                                                | 300.0                  | 299.9                  | 299.9                  | 0.5               | 0.5            | 96.76                       | -17.3                                   | 10.9          | 20.6                       | 19.6                        | 0.97                         | 21.154 ES                 |         |
| 400.0                                                                                                | 399.8                  | 399.2                  | 399.0                  | 0.7               | 0.7            | 122.14                      | -20.1                                   | 6.5           | 24.0                       | 22.7                        | 1.35                         | 17.789 SF                 |         |
| 500.0                                                                                                | 499.5                  | 496.9                  | 496.4                  | 0.9               | 0.9            | 145.89                      | -24.6                                   | -0.6          | 36.2                       | 34.5                        | 1.71                         | 21.190                    |         |
| 600.0                                                                                                | 598.7                  | 593.3                  | 592.1                  | 1.2               | 1.1            | 159.37                      | -30.6                                   | -10.2         | 57.4                       | 55.3                        | 2.04                         | 28.153                    |         |
| 700.0                                                                                                | 697.5                  | 689.4                  | 687.5                  | 1.5               | 1.4            | 166.19                      | -36.9                                   | -20.2         | 83.9                       | 81.5                        | 2.36                         | 35.507                    |         |

# Cathedral Energy Services

## Anticollision Report

|                           |                                  |                                     |                                     |
|---------------------------|----------------------------------|-------------------------------------|-------------------------------------|
| <b>Company:</b>           | Berry Petroleum Company (NAD 83) | <b>Local Co-ordinate Reference:</b> | Well Milk Cabin OM14B (M32 595 Pad) |
| <b>Project:</b>           | Garfield County                  | <b>TVD Reference:</b>               | KBE @ 8144.0ft (Original Well Elev) |
| <b>Reference Site:</b>    | SWSW S32-T5S-R95W (M32 595 Pad)  | <b>MD Reference:</b>                | KBE @ 8144.0ft (Original Well Elev) |
| <b>Site Error:</b>        | 0.0ft                            | <b>North Reference:</b>             | True                                |
| <b>Reference Well:</b>    | Milk Cabin OM14B (M32 595 Pad)   | <b>Survey Calculation Method:</b>   | Minimum Curvature                   |
| <b>Well Error:</b>        | 0.0ft                            | <b>Output errors are at</b>         | 2.00 sigma                          |
| <b>Reference Wellbore</b> | DD                               | <b>Database:</b>                    | EDM 5000.1 US Multi Users DB        |
| <b>Reference Design:</b>  | Plan #1                          | <b>Offset TVD Reference:</b>        | Offset Datum                        |

| <b>Offset Design</b> SWSW S32-T5S-R95W (M32 595 Pad) - Milk Cabin OM14D (M32 595 Pad) - DD - Plan #1 |                        |                        |                        |                   |                |                             |                                         |               |                            |                             |                              |                      | Offset Site Error: | 0.0 ft |
|------------------------------------------------------------------------------------------------------|------------------------|------------------------|------------------------|-------------------|----------------|-----------------------------|-----------------------------------------|---------------|----------------------------|-----------------------------|------------------------------|----------------------|--------------------|--------|
| Survey Program: 0-MWD                                                                                |                        |                        |                        |                   |                |                             |                                         |               |                            |                             |                              |                      | Offset Well Error: | 0.0 ft |
| Reference                                                                                            |                        | Offset                 |                        | Semi Major Axis   |                |                             | Distance                                |               |                            |                             |                              |                      |                    |        |
| Measured Depth<br>(ft)                                                                               | Vertical Depth<br>(ft) | Measured Depth<br>(ft) | Vertical Depth<br>(ft) | Reference<br>(ft) | Offset<br>(ft) | Highside<br>Toolface<br>(°) | Offset Wellbore Centre<br>+N/-S<br>(ft) | +E/-W<br>(ft) | Between<br>Centres<br>(ft) | Between<br>Ellipses<br>(ft) | Total<br>Uncertainty<br>Axis | Separation<br>Factor | Warning            |        |
| 0.0                                                                                                  | 0.0                    | 0.0                    | 0.0                    | 0.0               | 0.0            | 142.26                      | -24.4                                   | 18.9          | 30.9                       |                             |                              |                      |                    |        |
| 100.0                                                                                                | 100.0                  | 100.0                  | 100.0                  | 0.1               | 0.1            | 142.26                      | -24.4                                   | 18.9          | 30.9                       | 30.6                        | 0.27                         | 114.817              |                    |        |
| 200.0                                                                                                | 200.0                  | 200.0                  | 200.0                  | 0.3               | 0.3            | 142.26                      | -24.4                                   | 18.9          | 30.9                       | 30.2                        | 0.62                         | 49.949 CC, ES        |                    |        |
| 300.0                                                                                                | 300.0                  | 299.3                  | 299.3                  | 0.5               | 0.5            | 87.22                       | -24.5                                   | 20.6          | 31.9                       | 30.9                        | 0.97                         | 32.842               |                    |        |
| 400.0                                                                                                | 399.8                  | 398.5                  | 398.3                  | 0.7               | 0.7            | 89.27                       | -24.9                                   | 25.7          | 35.1                       | 33.7                        | 1.35                         | 25.930               |                    |        |
| 500.0                                                                                                | 499.5                  | 497.5                  | 497.0                  | 0.9               | 0.9            | 91.96                       | -25.5                                   | 34.3          | 40.5                       | 38.7                        | 1.79                         | 22.639               |                    |        |
| 600.0                                                                                                | 598.7                  | 596.3                  | 595.1                  | 1.2               | 1.2            | 94.69                       | -26.3                                   | 46.2          | 48.1                       | 45.8                        | 2.30                         | 20.947               |                    |        |
| 700.0                                                                                                | 697.5                  | 694.9                  | 692.4                  | 1.5               | 1.5            | 97.09                       | -27.4                                   | 61.4          | 58.0                       | 55.1                        | 2.89                         | 20.037               |                    |        |
| 800.0                                                                                                | 795.6                  | 793.0                  | 788.8                  | 1.9               | 1.8            | 99.06                       | -28.7                                   | 79.9          | 70.1                       | 66.6                        | 3.59                         | 19.529               |                    |        |
| 810.1                                                                                                | 805.5                  | 802.9                  | 798.5                  | 1.9               | 1.9            | 99.24                       | -28.9                                   | 81.9          | 71.5                       | 67.8                        | 3.66                         | 19.513               |                    |        |
| 900.0                                                                                                | 893.4                  | 892.0                  | 885.6                  | 2.3               | 2.2            | 100.82                      | -30.2                                   | 100.4         | 83.6                       | 79.3                        | 4.33                         | 19.337               |                    |        |
| 1,000.0                                                                                              | 991.1                  | 991.0                  | 982.5                  | 2.7               | 2.6            | 102.11                      | -31.7                                   | 121.0         | 97.2                       | 92.1                        | 5.07                         | 19.156 SF            |                    |        |

# Cathedral Energy Services

## Anticollision Report

|                           |                                  |                                     |                                     |
|---------------------------|----------------------------------|-------------------------------------|-------------------------------------|
| <b>Company:</b>           | Berry Petroleum Company (NAD 83) | <b>Local Co-ordinate Reference:</b> | Well Milk Cabin OM14B (M32 595 Pad) |
| <b>Project:</b>           | Garfield County                  | <b>TVD Reference:</b>               | KBE @ 8144.0ft (Original Well Elev) |
| <b>Reference Site:</b>    | SWSW S32-T5S-R95W (M32 595 Pad)  | <b>MD Reference:</b>                | KBE @ 8144.0ft (Original Well Elev) |
| <b>Site Error:</b>        | 0.0ft                            | <b>North Reference:</b>             | True                                |
| <b>Reference Well:</b>    | Milk Cabin OM14B (M32 595 Pad)   | <b>Survey Calculation Method:</b>   | Minimum Curvature                   |
| <b>Well Error:</b>        | 0.0ft                            | <b>Output errors are at</b>         | 2.00 sigma                          |
| <b>Reference Wellbore</b> | DD                               | <b>Database:</b>                    | EDM 5000.1 US Multi Users DB        |
| <b>Reference Design:</b>  | Plan #1                          | <b>Offset TVD Reference:</b>        | Offset Datum                        |

Reference Depths are relative to KBE @ 8144.0ft (Original Well Elev)  
Offset Depths are relative to Offset Datum  
Central Meridian is -105.500000 °

Coordinates are relative to: Milk Cabin OM14B (M32 595 Pad)  
Coordinate System is US State Plane 1983, Colorado Central Zone  
Grid Convergence at Surface is: -1.63°

