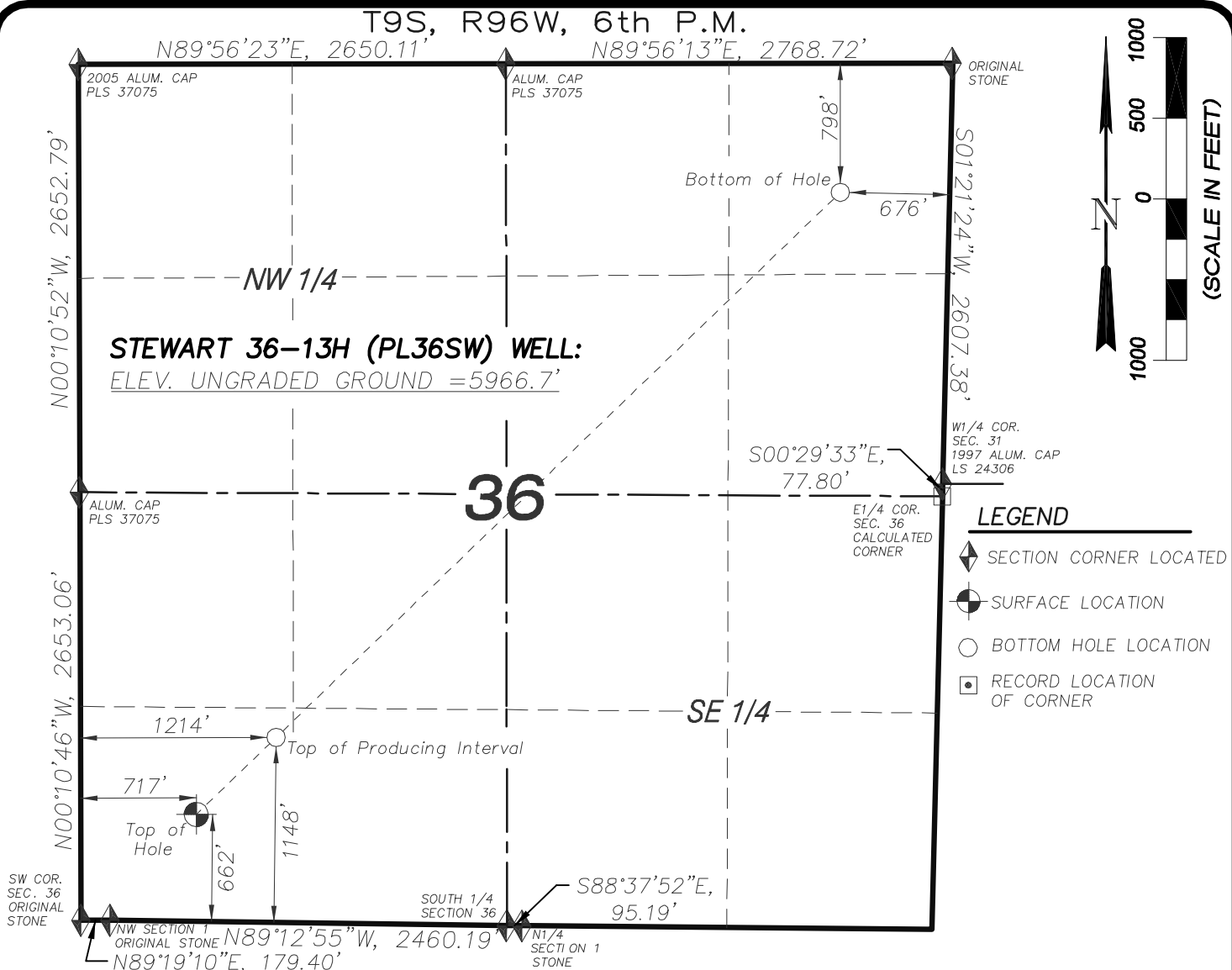


PL36SW WELL PAD- REVISION SUMMARY

[illegible]



STEWART 36-13H WELL (PL36SW)

(WELLHEAD LOCATION) NAD 83

LATITUDE = 39.22636° N

LONGITUDE = 108.06032° W

(BOTTOM HOLE LOCATION) NAD 83

LATITUDE = 39.23694° N

LONGITUDE = 108.04623° W

CERTIFICATE OF SURVEYOR

I, TED TAGGART OF FRUITA, COLORADO HEREBY CERTIFY THAT THIS MAP WAS MADE FROM NOTES TAKEN DURING AN ACTUAL SURVEY MADE BY ME OR UNDER MY DIRECTION FOR ENCANNA OIL & GAS (USA) INC. AND THAT THIS LOCATION HAS BEEN STAKED ON THE GROUND AS SHOWN HEREON.



906 Main Street
Evanston, Wyoming 82930
Phone No. (307) 789-4545

NOTES

1. WELL FOOTAGES ARE MEASURED AT RIGHT ANGLES TO SECTION LINES.
2. BASIS OF BEARING: GEODETIC- BASED ON GPS OBSERVATIONS.
3. ELEVATIONS BASED ON GPS OBSERVATIONS, NAVD 88 (GEOID 03), POST PROCESSED USING NGS OPUS.
4. THE BOTTOM HOLE BEARS N45°59'58"E, 5550' FROM TOP OF HOLE.
5. SEE ADDENDUM TO LEGAL PLAT (SHEET 1a) FOR VISIBLE IMPROVEMENTS WITHIN 400 FEET OF THE PROPOSED WELLHEAD.
5. CONTROL FOR SURVEY WAS ESTABLISHED USING DIFFERENTIALLY CORRECTED GPS FROM AN OPUS BASED CONTROL NETWORK. WELL LOCATION WAS ESTABLISHED USING NON-GPS CONVENTIONAL METHODS, THEREFORE NO PDOP READING WAS TAKEN.

MAP to ACCOMPANY
APPLICATION for PERMIT to DRILL
EnCana Oil & Gas (USA) Inc.
Stewart 36-13H (PL36SW) Well

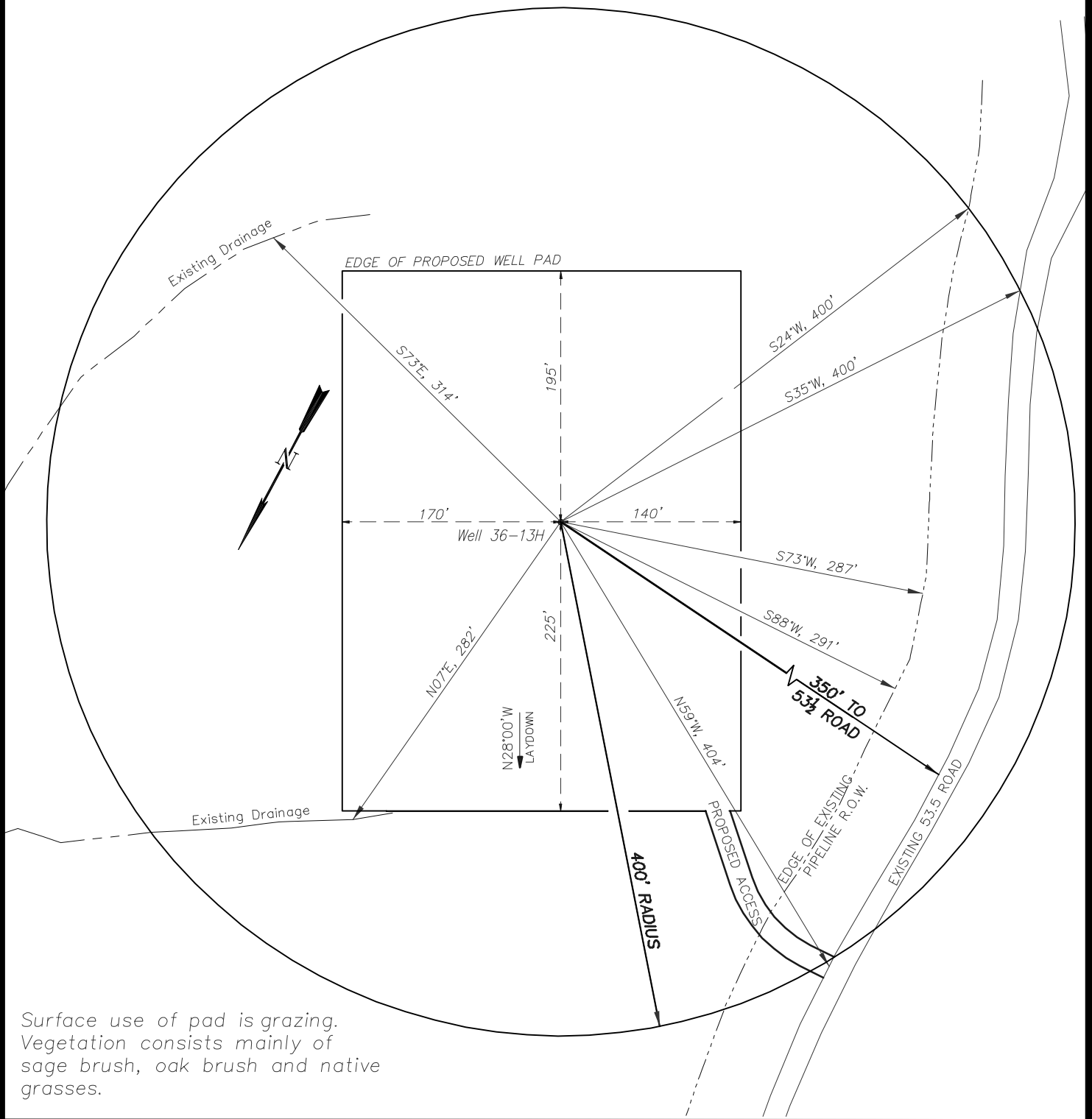
SW1/4 SW1/4, SECTION 36

T9S, R96W, 6th P.M.

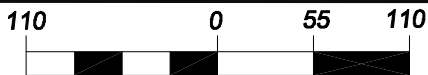
MESA COUNTY, COLORADO

Location Plat		Scale: 1" = 1000'	SHEET 1 OF 10
Project No.	08-04-73	Date Surveyed: 12/29/08	
Date Drawn:	3/31/09	Latest Revision Date: 5/15/09	

EnCana Oil & Gas (USA) Inc.
ADDENDUM TO LEGAL PLATS FOR
PL36SW Well Pad
SECTION 36, T 9 S, R 96 W, 6th P.M.



Surface use of pad is grazing.
 Vegetation consists mainly of
 sage brush, oak brush and native
 grasses.

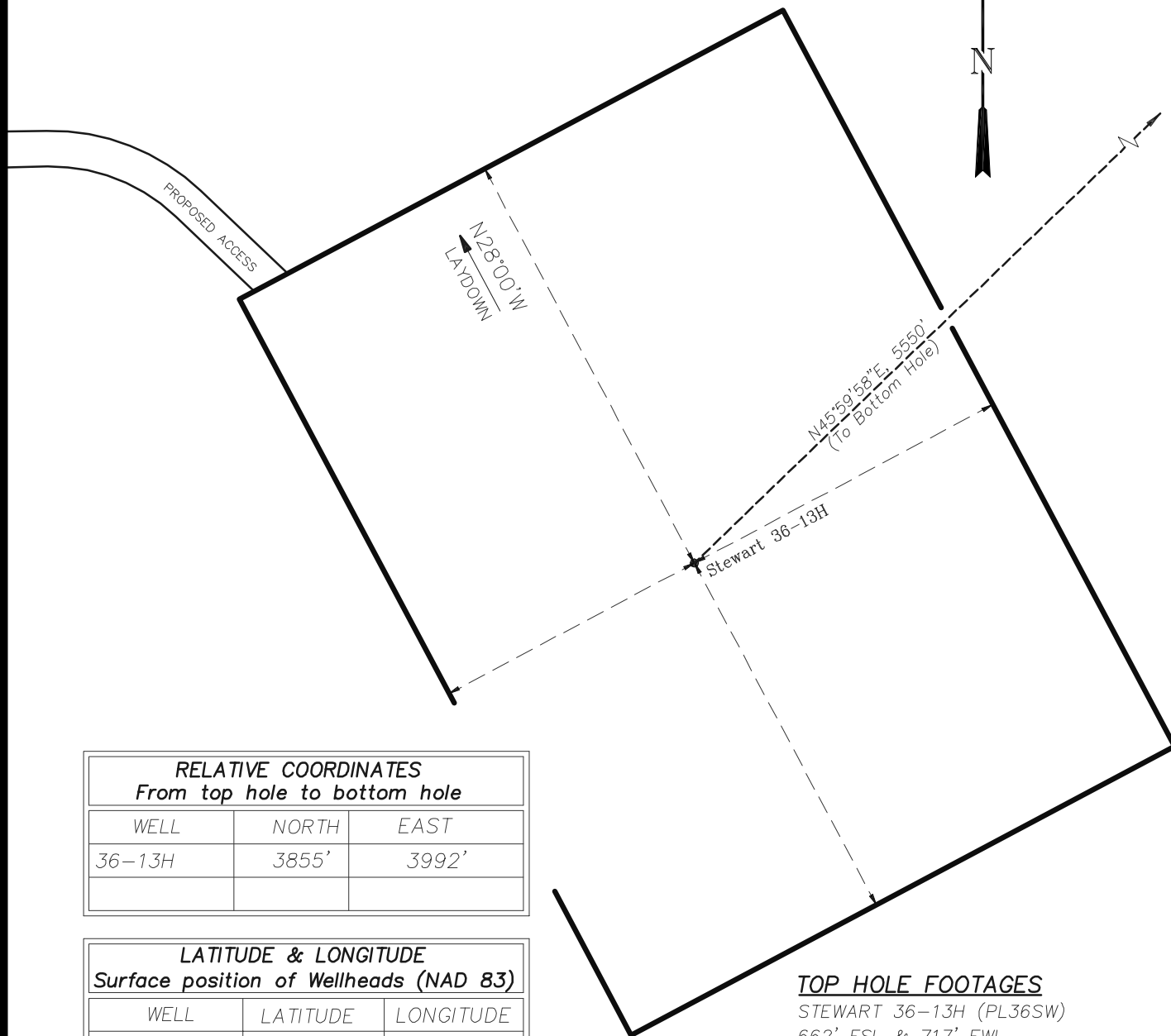


(SCALE IN FEET)

906 Main Street
 Evanston, Wyoming 82930
 Phone No. (307) 789-4545

Addendum		Scale: 1" = 110'	SHEET 1a OF 10
Project No.	08-04-73	Date Surveyed: 12/29/08	
Date	3/31/09	Latest Revision Date: 5/15/09	
Drawn:			

EnCana Oil & Gas (USA) Inc.
Well Pad (PL36SW)
Section 36, T9S, R96W, 6th P.M.
WELL PAD INTERFERENCE PLAT



RELATIVE COORDINATES From top hole to bottom hole		
WELL	NORTH	EAST
36-13H	3855'	3992'

LATITUDE & LONGITUDE Surface position of Wellheads (NAD 83)		
WELL	LATITUDE	LONGITUDE
36-13H	39.22636°	108.06032°

TOP HOLE FOOTAGES

STEWART 36-13H (PL36SW)
662' FSL & 717' FWL

BOTTOM HOLE FOOTAGES

STEWART 36-13H (PL36SW)
798' FNL & 676' FEL SEC. 36



(SCALE IN FEET)

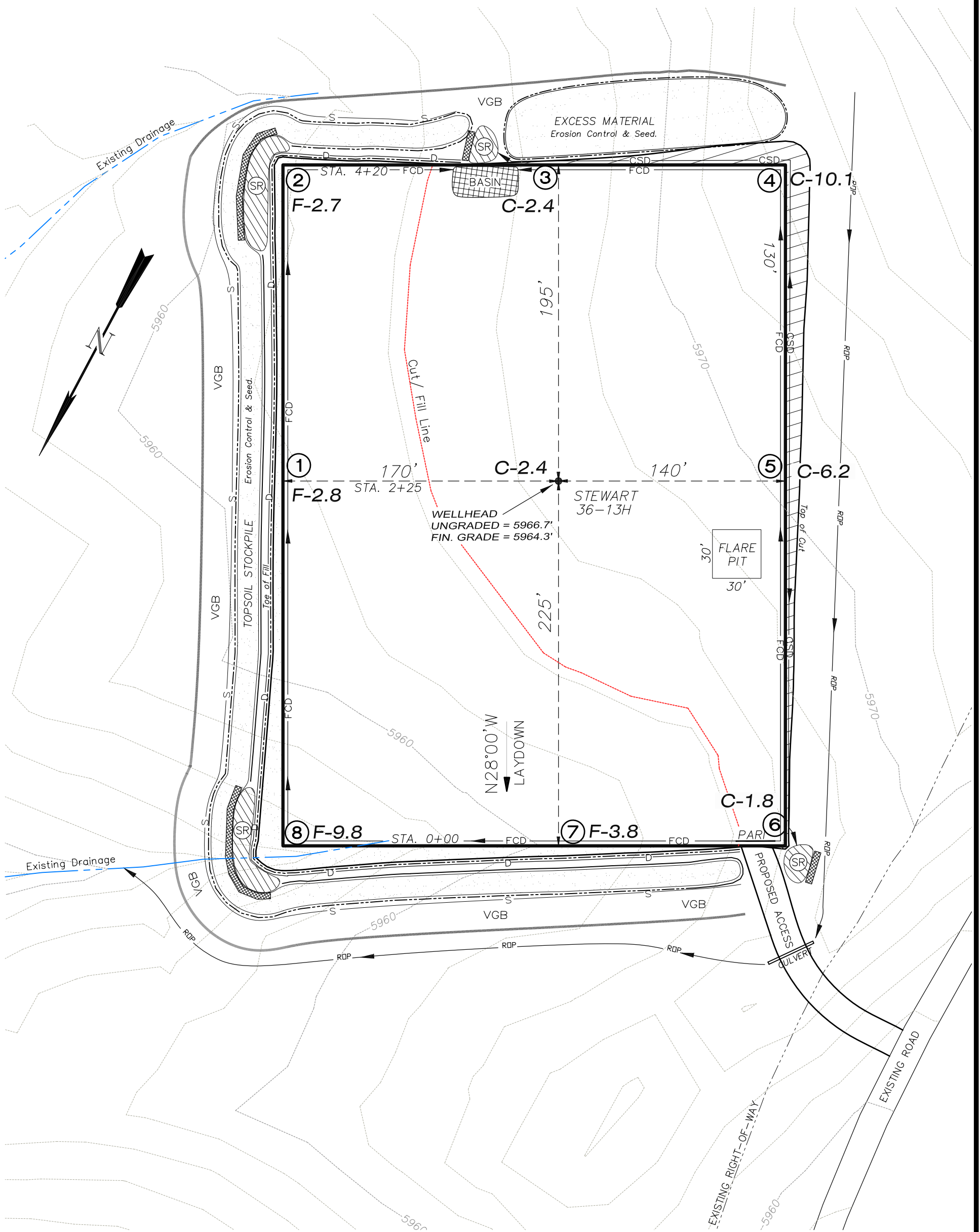


906 Main Street
Evanston, Wyoming 82930
Phone No. (307) 789-4545

Interference Plat		Scale: 1" = 80'	SHEET 2 OF 10
Project No.	08-04-73	Date Surveyed: 12/29/08	
Date Drawn:	3/31/09	Latest Revision Date: 5/15/09	

EnCana Oil & Gas (USA) Inc.
PL36SW Well Pad

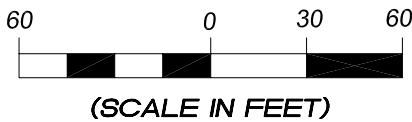
SW1/4 SW1/4, SECTION 36, T 9 S, R 96 W, 6th P.M.
WELL PAD LAYOUT



Total Surface Disturbance = 5.14 Acres
(See Sheet 4 for Details)

- NOTES:
- (1) Slope Track and/or Terrace all Slopes and Piles
 - (2) Erosion Control & Seed Topsoil
 - (3) Erosion Control & Seed Outside
 - (4) Slope away from Substructure Areas 1% to 3% to Flow Control

- LEGEND
- PARI = PAD/ACCESS ROAD INTERFACE
 - SR = SEDIMENT RESERVOIR
 - ST = SEDIMENT TRAP
 - R.O.P. = RUN-ON PROTECTION
 - = PERIMETER CONTROL (WATTLES)
 - CSD = CUT SLOPE DIVERSION (BERM TOE OF CUT SLOPE)
 - D = FILL DIVERSION TO SEDIMENT TRAP
 - VGB = VEGETATION BUFFER (UNDISTURBED LAND INSIDE PC)
 - CDM = CHECK DAM
 - FCD = FLOW CONTROL DITCH
 - S = SLASH
 - ▨ = LEVEL SPREADER
 - = TOE BERM (PLACED AT TOE OF ALL FILL SLOPES/STOCKPILES)

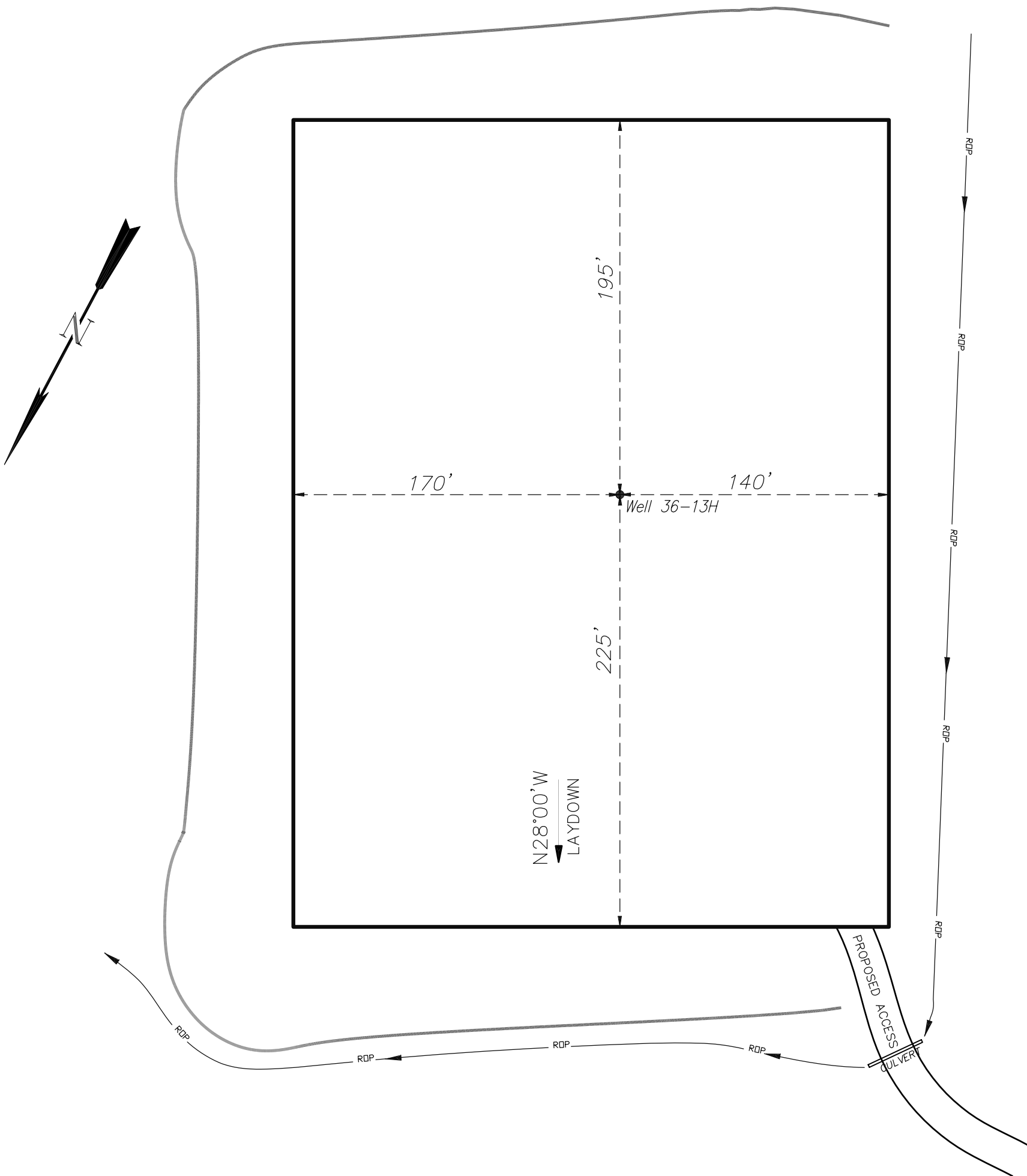


906 Main Street
Evanston, Wyoming 82930
Phone No. (307) 789-4545

Well Pad Layout		Scale: 1" = 60'	SHEET 3 OF 10
Project No.	08-04-73	Date Surveyed: 12/29/08	
Date Drawn: 3/31/09		Latest Revision Date: 4/27/09	

EnCana Oil & Gas (USA) Inc.
PL36SW Well Pad

SW1/4 SW1/4, SECTION 36, T 9 S, R 96 W, 6th P.M.
PRE-CONSTRUCTION PLAT



Total Surface Disturbance = 5.14 Acres
(See Sheet 4 for Details)

- NOTES:
- (1) Slope Track and/or Terrace all Slopes and Piles
 - (2) Erosion Control & Seed Topsoil
 - (3) Erosion Control & Seed Outside
 - (4) Slope away from Substructure Areas 1% to 3% to Flow Control

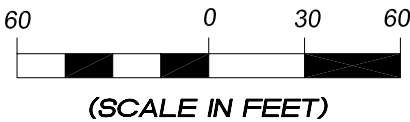
- LEGEND:
- PARI = PAD/ACCESS ROAD INTERFACE
 - SR = SEDIMENT RESERVOIR
 - ST = SEDIMENT TRAP
 - R.O.P.= RUN-ON PROTECTION
 - = PERIMETER CONTROL (WATTLES)
 - CSD = CUT SLOPE DIVERSION (BERM TOE OF CUT SLOPE)
 - D = FILL DIVERSION TO SEDIMENT TRAP
 - VGB = VEGETATION BUFFER (UNDISTURBED LAND INSIDE PC)
 - CDM = CHECK DAM
 - FCD = FLOW CONTROL DITCH
 - S = SLASH
 - ▨ = LEVEL SPREADER
 - = TOE BERM (PLACED AT TOE OF ALL FILL SLOPES/STOCKPILES)

PRE-CONSTRUCTION PHASE COMPLETE,
AUTHORIZATION TO CONTINUE
CONSTRUCTION.

SIGNATURE: _____



906 Main Street
Evanston, Wyoming 82930
Phone No. (307) 789-4545

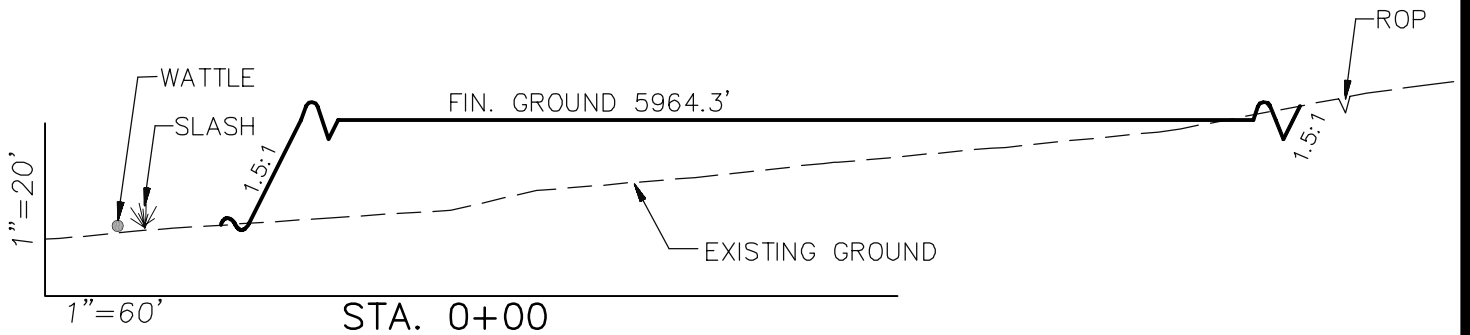
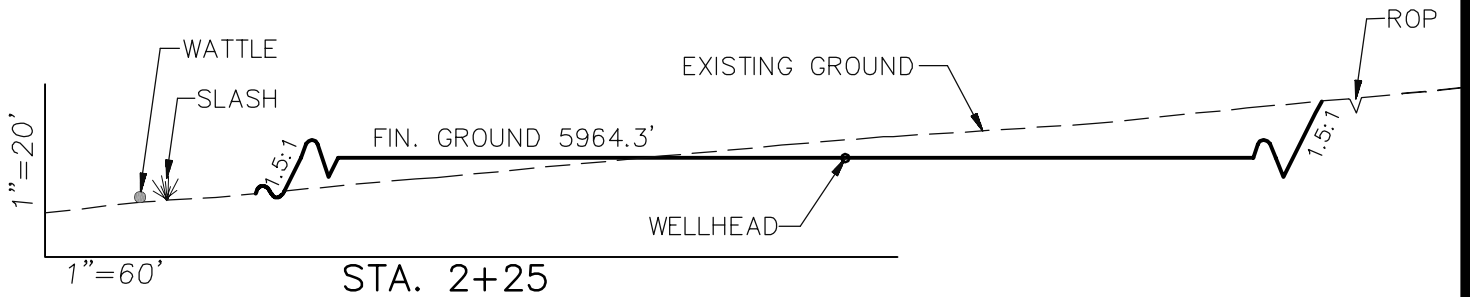
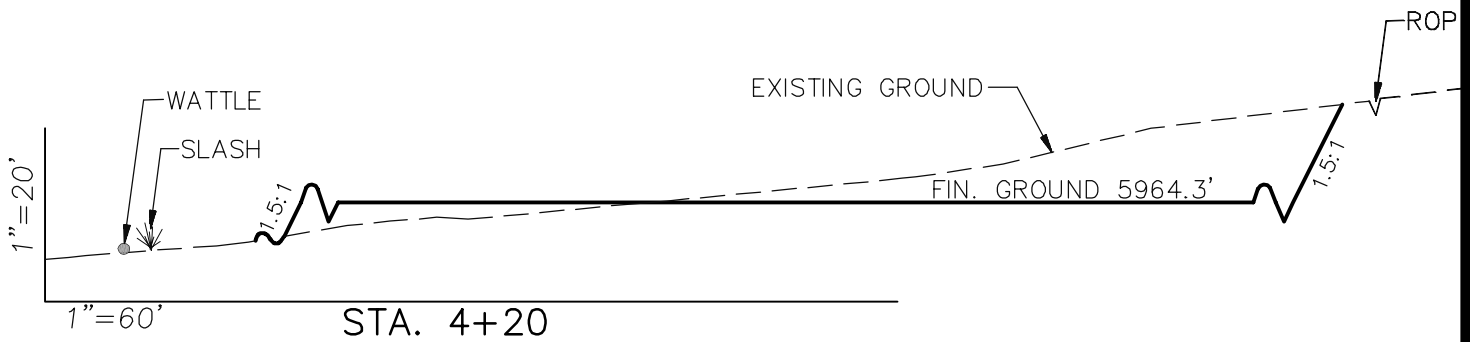


Pre-Construction		Scale: 1" = 60'	SHEET 3a OF 10
Project No.	08-04-73	Date Surveyed: 12/29/08	
Date Drawn:	3/31/09	Latest Revision Date: 4/27/09	

EnCana Oil & Gas (USA) Inc.

Well Pad (PL36SW)

CROSS SECTIONS



SURFACE DISTURBANCE (IN ACRES)

Well Pad	3.0
Side Slopes	0.2
Topsoil & Waste Material	1.94
TOTAL	5.14

NOTE:
ALL CUT AND FILL
SLOPES ARE AT 1.5:1
UNLESS OTHERWISE
NOTED.

EARTHWORK QUANTITIES

(in Cubic Yards w/ 0% shrink/swell)

ITEM	CUT	FILL	6" TOPSOIL	EXCESS
PAD	7514	6922	Topsoil not included in Excavation	592
PIT	0	0		0
TOTALS	7514	6922	2602	592

Cross Sections

Project No. 08-04-73
Date Drawn: 3/31/09

Scale: As Shown

Date Surveyed: 12/29/08
Latest Revision
Date:

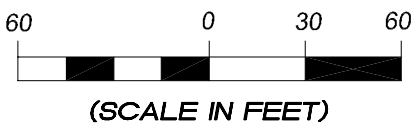
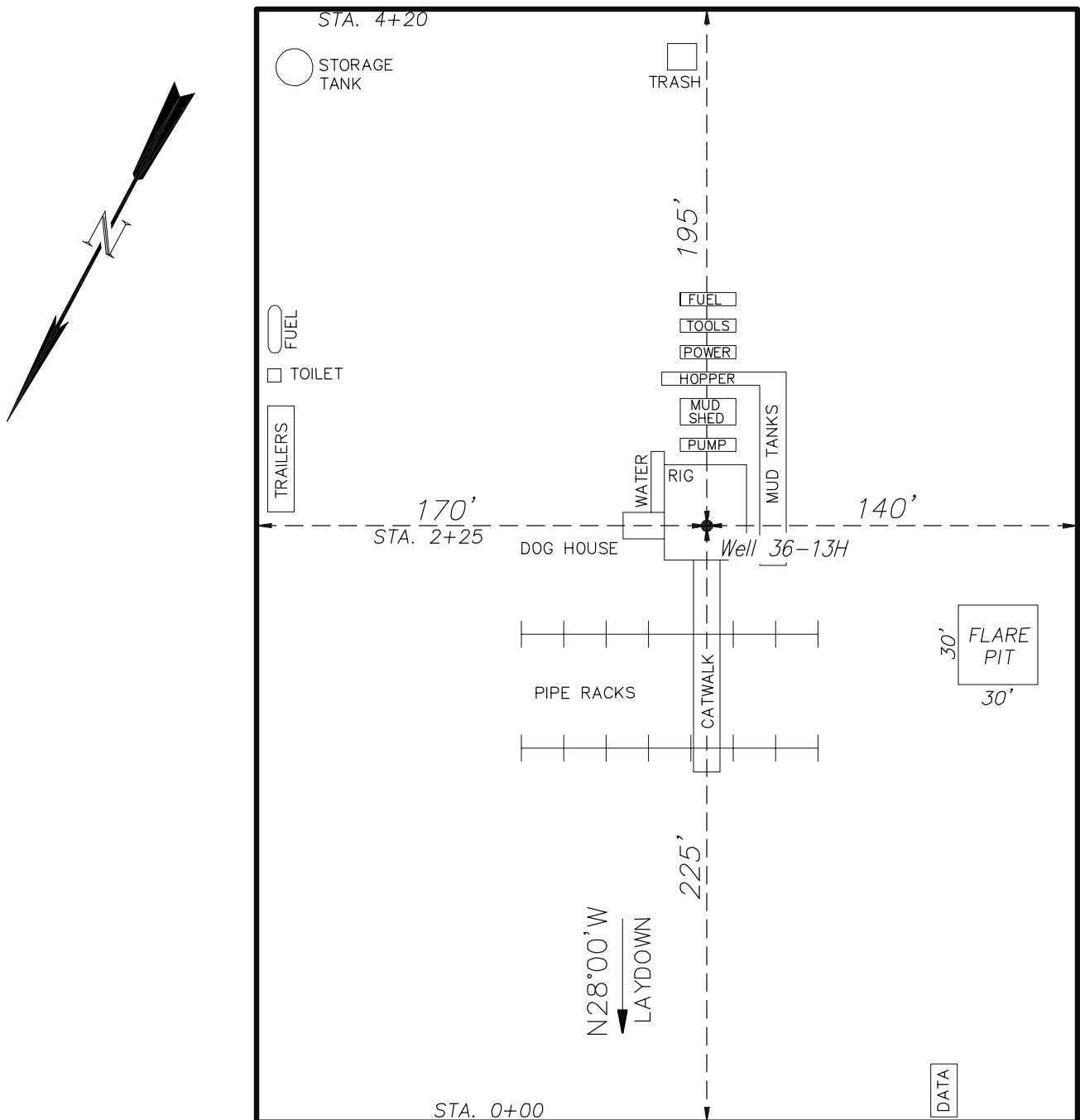
SHEET

4
OF 10



906 Main Street
Evanston, Wyoming 82930
Phone No. (307) 789-4545

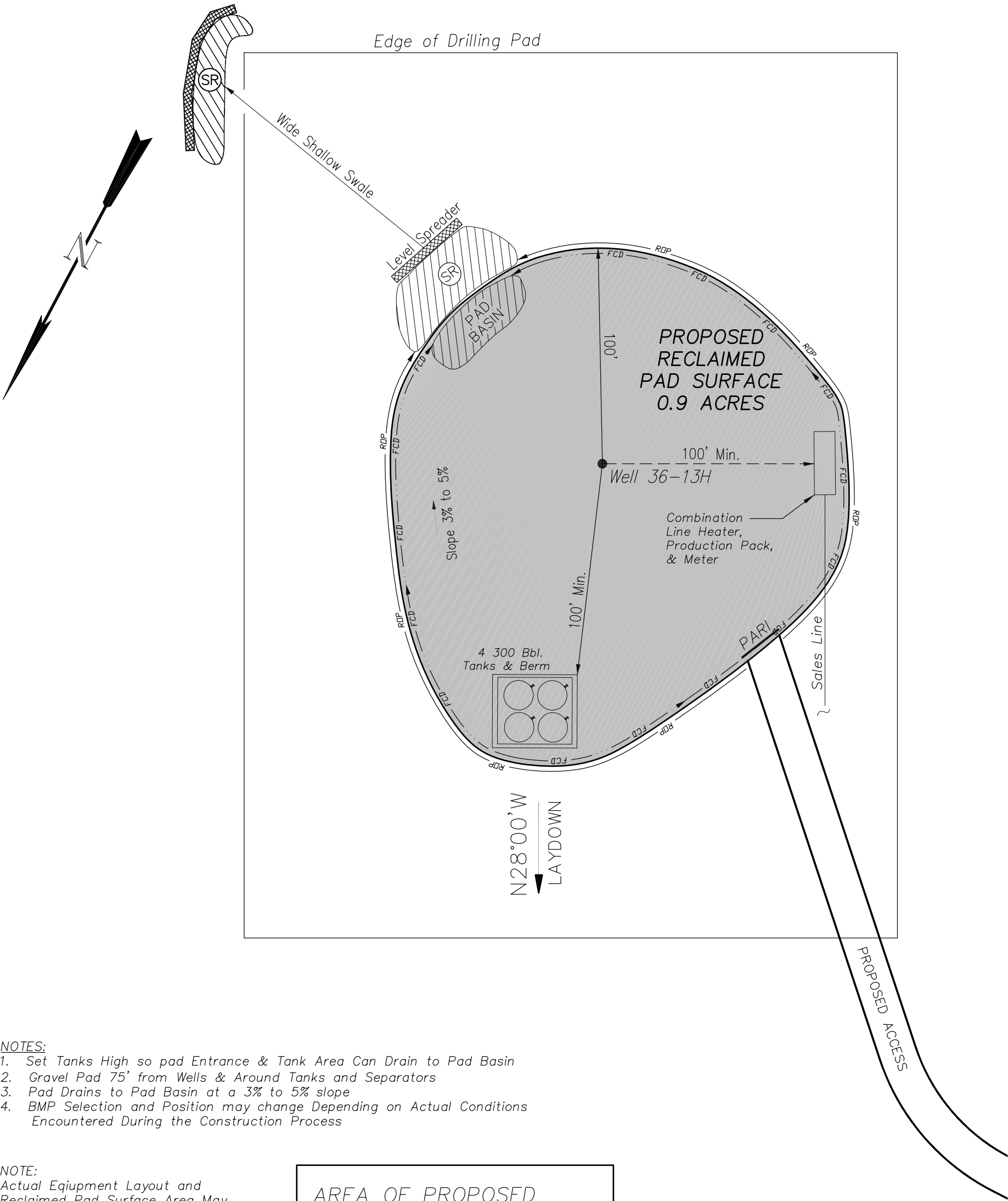
EnCana Oil & Gas (USA) Inc.
Well Pad (PL36SW)
TYPICAL RIG LAYOUT



906 Main Street
 Evanston, Wyoming 82930
 Phone No. (307) 789-4545

<i>Rig Layout</i>		<i>Scale: 1" = 60'</i>		SHEET 5 OF 10
Project No.	08-04-73	Date Surveyed:	12/29/08	
Date Drawn:	3/31/09	Latest Revision Date:		

EnCana Oil & Gas (USA) Inc.
PL36SW Well Pad
PRODUCTION SCHEMATIC



- NOTES:
1. Set Tanks High so pad Entrance & Tank Area Can Drain to Pad Basin
 2. Gravel Pad 75' from Wells & Around Tanks and Separators
 3. Pad Drains to Pad Basin at a 3% to 5% slope
 4. BMP Selection and Position may change Depending on Actual Conditions Encountered During the Construction Process

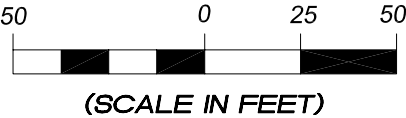
NOTE:
Actual Equipment Layout and Reclaimed Pad Surface Area May Change due to Production Requirements or Site Conditions.

AREA OF PROPOSED
RECLAIMED PAD SURFACE
= 0.9 ACRES

- LEGEND
- PARI = PAD/ACCESS ROAD INTERFACE
 - SR = SEDIMENT RESERVOIR
 - ST = SEDIMENT TRAP
 - R.O.P. = RUN-ON PROTECTION
 - = PERIMETER CONTROL (WATTLES)
 - CSD = CUT SLOPE DIVERSION (BERM TOE OF CUT SLOPE)
 - D = FILL DIVERSION TO SEDIMENT TRAP
 - VGB = VEGETATION BUFFER (UNDISTURBED LAND INSIDE PC)
 - CDM = CHECK DAM
 - FCD = FLOW CONTROL DITCH
 - S = SLASH
 - ▨ = LEVEL SPREADER
 - = TOE BERM (PLACED AT TOE OF ALL FILL SLOPES/STOCKPILES)



906 Main Street
Evanston, Wyoming 82930
Phone No. (307) 789-4545



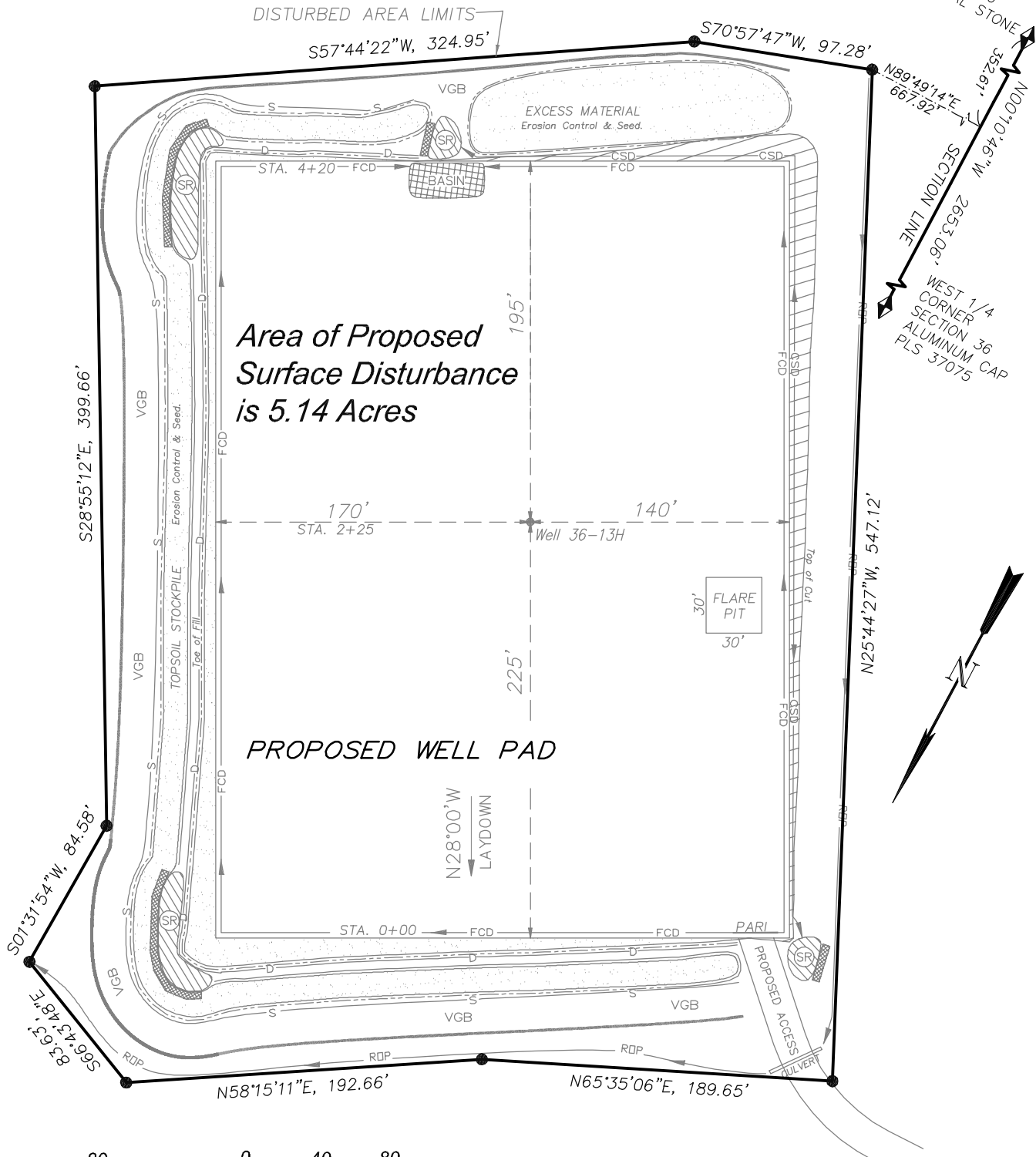
Production Schematic		Scale: 1" = 50'	SHEET 6 OF 10
Project No.	08-04-73	Date Surveyed: 12/29/08	
Date Drawn:	3/31/09	Latest Revision Date:	

EnCana Oil & Gas (USA) Inc.

Well Pad (PL36SW)

Section 36, T9S, R96W, 6th P.M.

SURFACE DISTURBANCE AREA

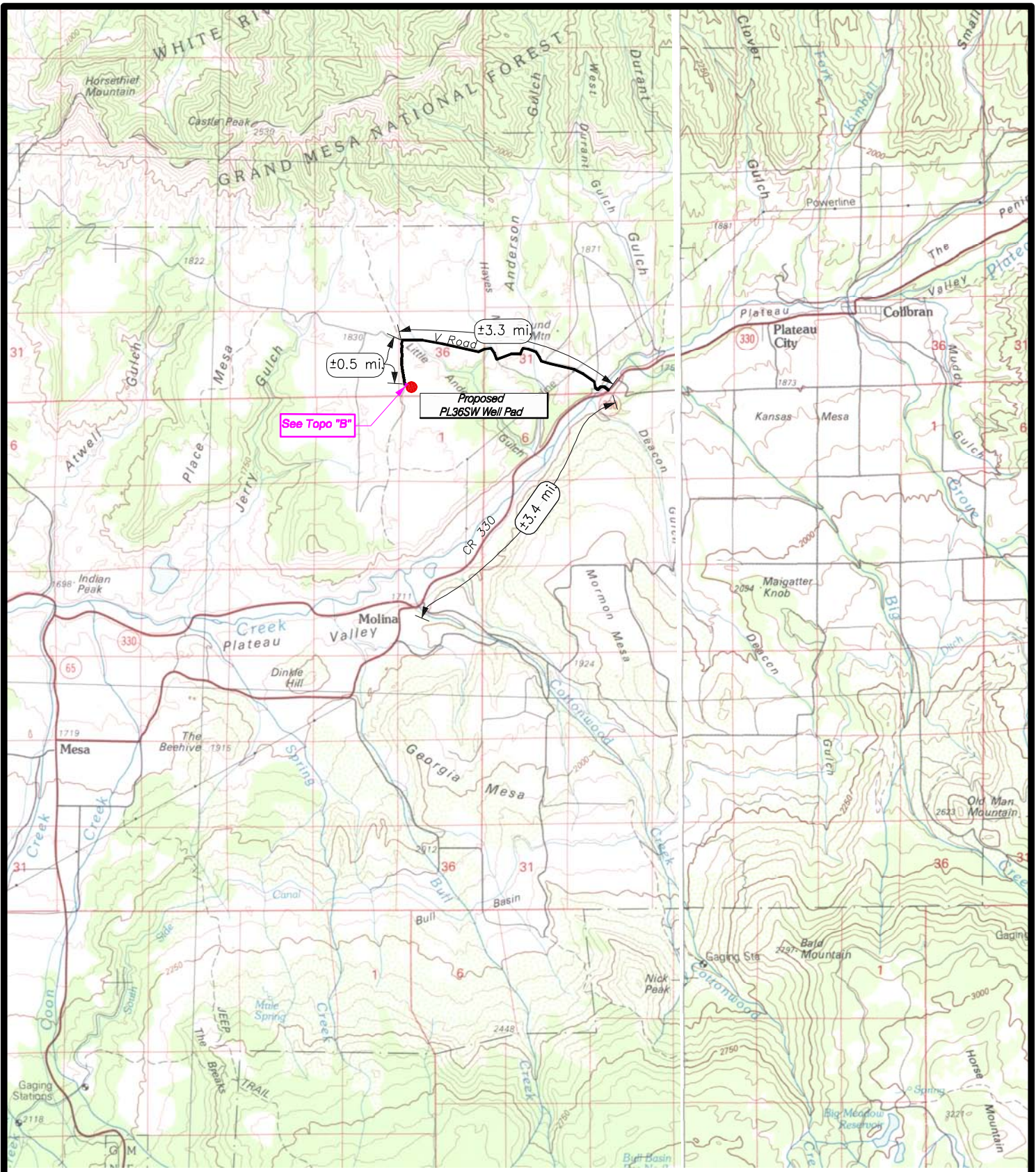


(SCALE IN FEET)



906 Main Street
Evanston, Wyoming 82930
Phone No. (307) 789-4545

Surface Disturbance		Scale: 1" = 80'	SHEET 7 OF 10
Project No.	08-04-73	Date Surveyed: 12/29/08	
Date Drawn: 3/31/09		Latest Revision Date: 4/27/09	



EnCana Oil & Gas (USA) Inc.

**Proposed PL36SW Well Pad
Section 36, T9S, R96W, 6th P.M.
Mesa County, Colorado**



906 Main Street
Evanston, Wyoming 82930
Phone No. (307) 789-4545

DATE: March 31, 2009

SCALE: 1:100,000

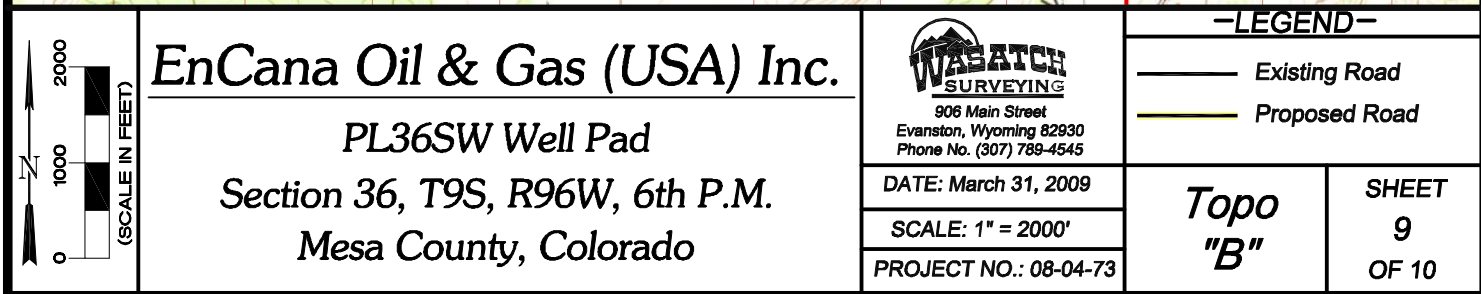
PROJECT NO.: 08-04-73

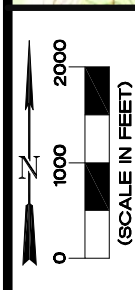
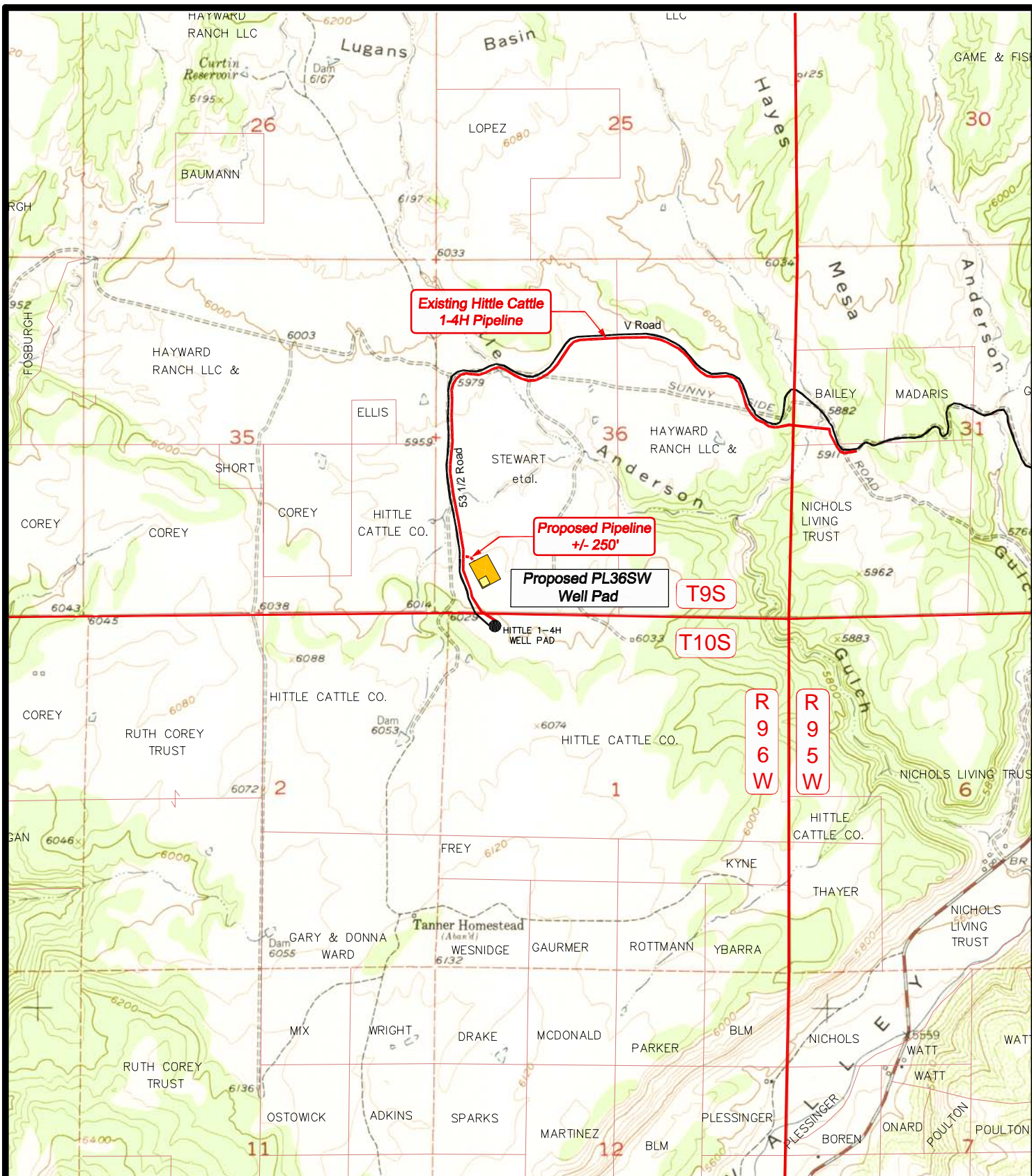
—LEGEND—

— Existing Road

**Topo
"A"**

**SHEET
8
OF 10**





EnCana Oil & Gas (USA) Inc.

PL36SW Well Pad

**Section 36, T9S, R96W, 6th P.M.
Mesa County, Colorado**



906 Main Street
Evanston, Wyoming 82930
Phone No. (307) 789-4545

DATE: March 31, 2009

SCALE: 1" = 2000'

PROJECT NO.: 08-04-73

-LEGEND-

- Proposed Pipeline
- Existing Pipeline
- Existing Road

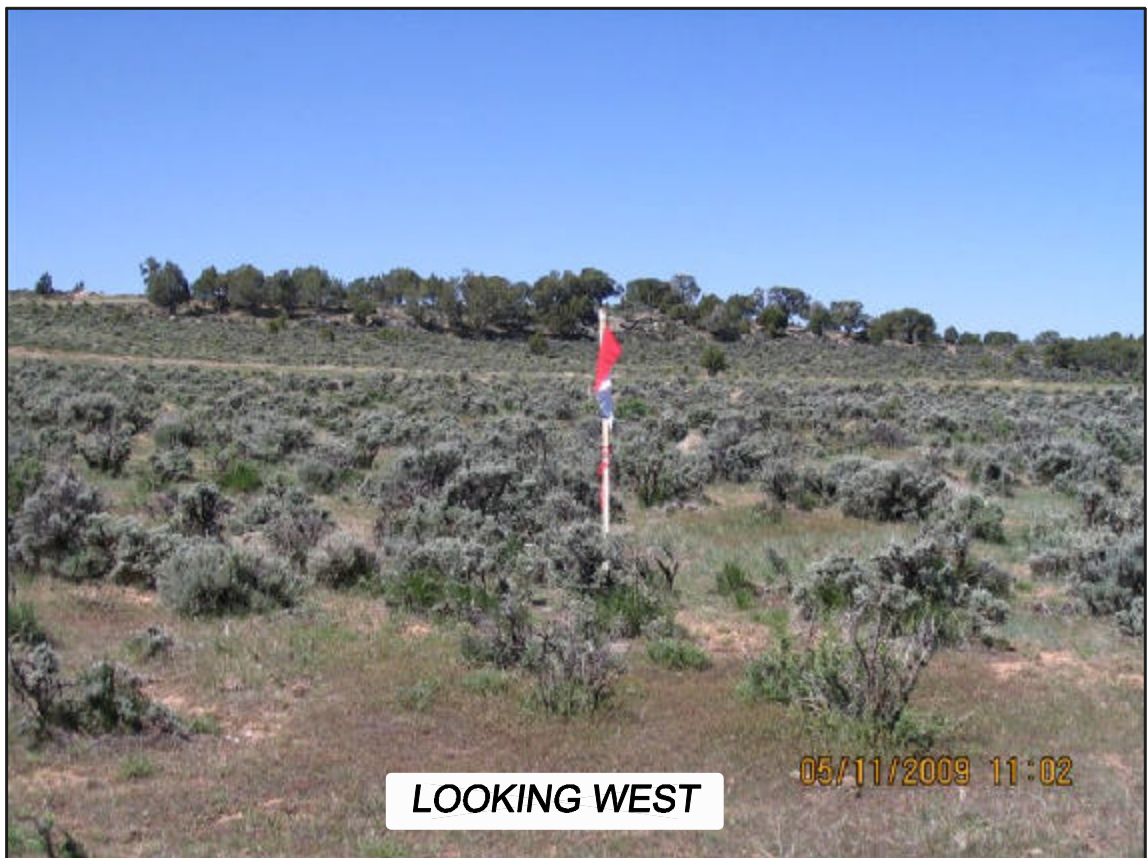
**Topo
"D"**

**SHEET
10
OF 10**

EnCana Oil & Gas (USA) Inc.
PL36SW Well Pad



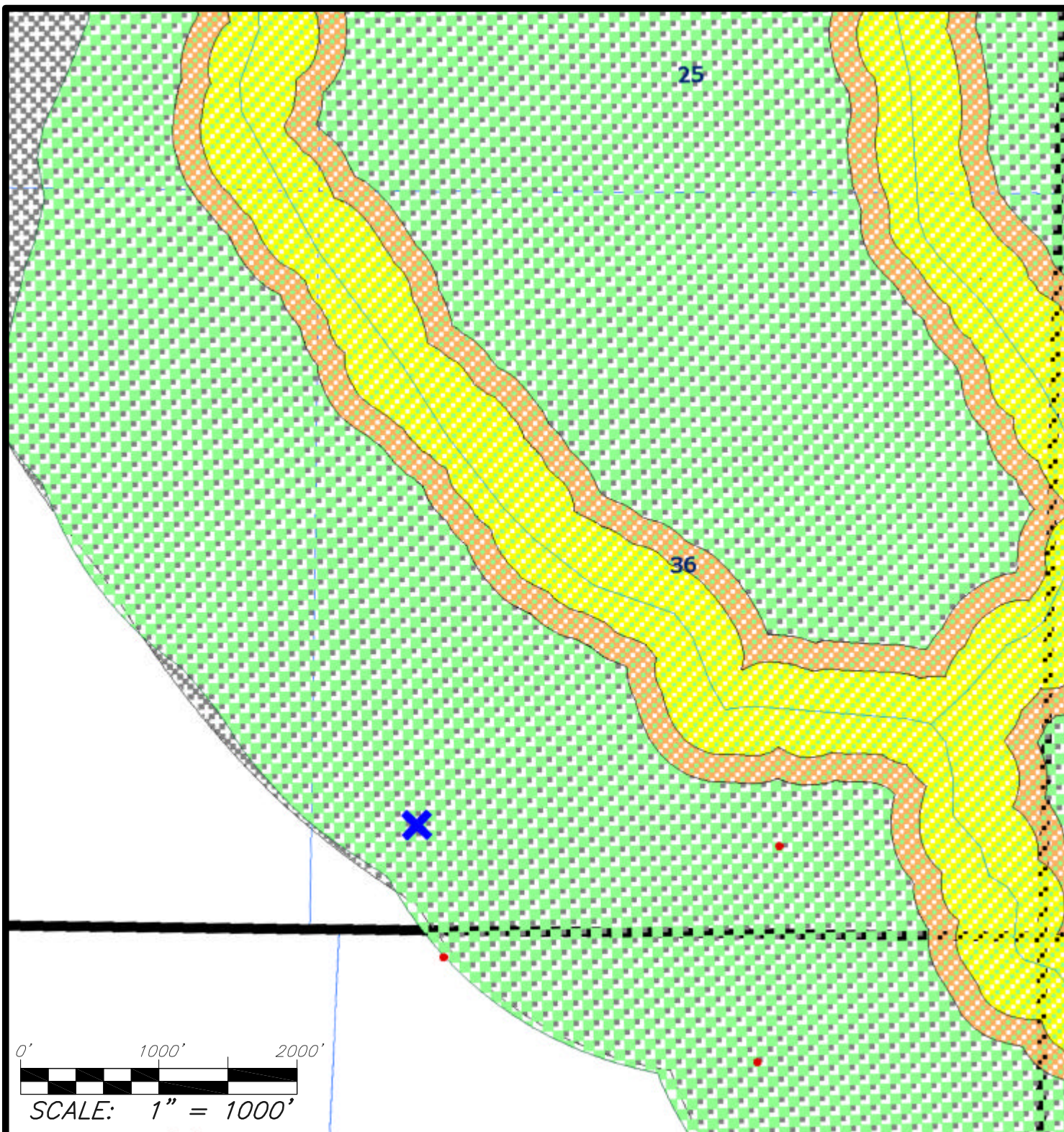
*EnCana Oil & Gas (USA) Inc.
PL36SW Well Pad*








*EnCana Oil & Gas (USA) Inc.
PL36SW Well Pad*



WELL FLAG



MAP LEGEND

-  INTERNAL BUFFER ZONE (0-300')
-  INTERMEDIATE BUFFER ZONE (301-500')
-  EXTERNAL BUFFER ZONE (501-2640')
-  PROPOSED WELL SITE
-  EXISTING WELL SITE



Wasatch Surveying Associates
 906 Main Street Evanston, Wyoming 82930
 Phone No. (307) 789-4545 Fax 307-789-5722

ENCANA OIL & GAS (USA) INC.

PUBLIC WATER SYSTEM PROTECTION MAP

FOR THE
 PROPOSED PL36SW WELL PAD
 SECTION 36, T9S, R96W, 6th, P.M.
 MESA COUNTY, COLORADO

**RULE 317B
 EXHIBIT**

PROJECT NUMBER
 08-04-73
 DATE: 4/30/09
 SCALE: 1"=1000'

**SHEET
 1
 OF 1**