

T7S, R92W, 6th P.M.

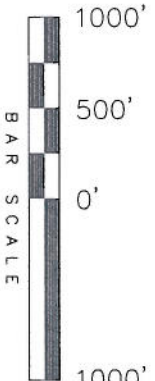
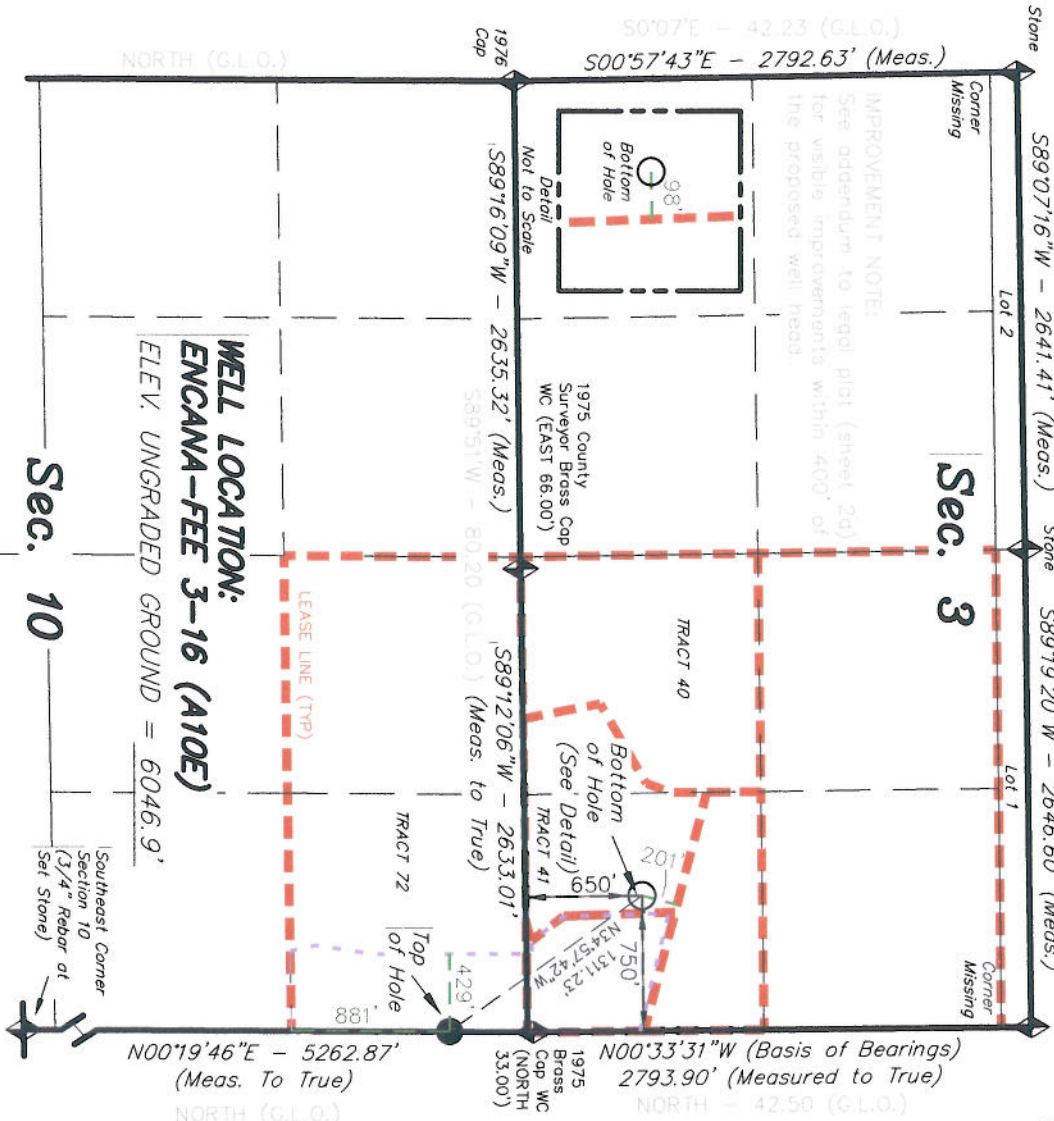
WEST = (G.L.O.)

2001 Alum.
Cap LS 31143

ENCANA OIL & GAS (USA) INC

WELL LOCATION, ENCANA-FEE 3-16 (A10E), LOCATED AS SHOWN IN THE NE 1/4 NE 1/4 OF SECTION 10, T7S, R92W, 6th P.M. GARFIELD COUNTY, COLORADO.

IMPROVEMENT NOTE:
See addendum to legal plat (sheet 2d) for visible improvements within 400' of the proposed well head.



- NOTES:
1. Well footages are measured at right angles to the Section Lines.
 2. Bearings are based on Global Positioning Satellite observations.
 3. The Top of Hole footages are 435' FNL & 2' FEL
 4. G.P.S. Operator: C.D. Slaugh, (PDOP) = 3.5

THIS IS TO CERTIFY THAT THE ABOVE PLAT WAS PREPARED FROM FIELD NOTES MADE BY ME OR UNDER MY SUPERVISION AND THAT THE SAME ARE TRUE AND CORRECT TO THE BEST OF MY KNOWLEDGE AND BELIEF.

Stacy W. Steward
REGISTERED PROFESSIONAL LAND SURVEYOR
30125
COLORADO REGISTERED PROFESSIONAL LAND SURVEYOR

WELL LOCATION:
ENCANA-FEE 3-16 (A10E)
ELEV. UNGRADED GROUND = 6046.9'
Sec. 10

NAD 83 (SURFACE LOCATION)	
LATITUDE =	39°28'03.36"
	(39.467600)
LONGITUDE =	107°38'35.16"
	(107.643100)

SECTION CORNERS LOCATED

Basis of elevation is the Rite 2 Triangulation Station, 39°31'53.80" N Lat. & 107°47'07.78" W Long (NAD 83) Elevation = 5323.1' (NAVD88).

TRI STATE LAND SURVEYING & CONSULTING	
180 NORTH VERNAL AVE. - VERNAL, UTAH 84078	
(435) 781-2501	
DATE SURVEYED:	SURVEYED BY: C.D.S.
10-20-06	
DATE DRAWN:	DRAWN BY: R.V.C.
11-1-06	
REVISD:	SCALE: 1" = 1000'
02-01-10 F.T.M.	
SHEET 2b	