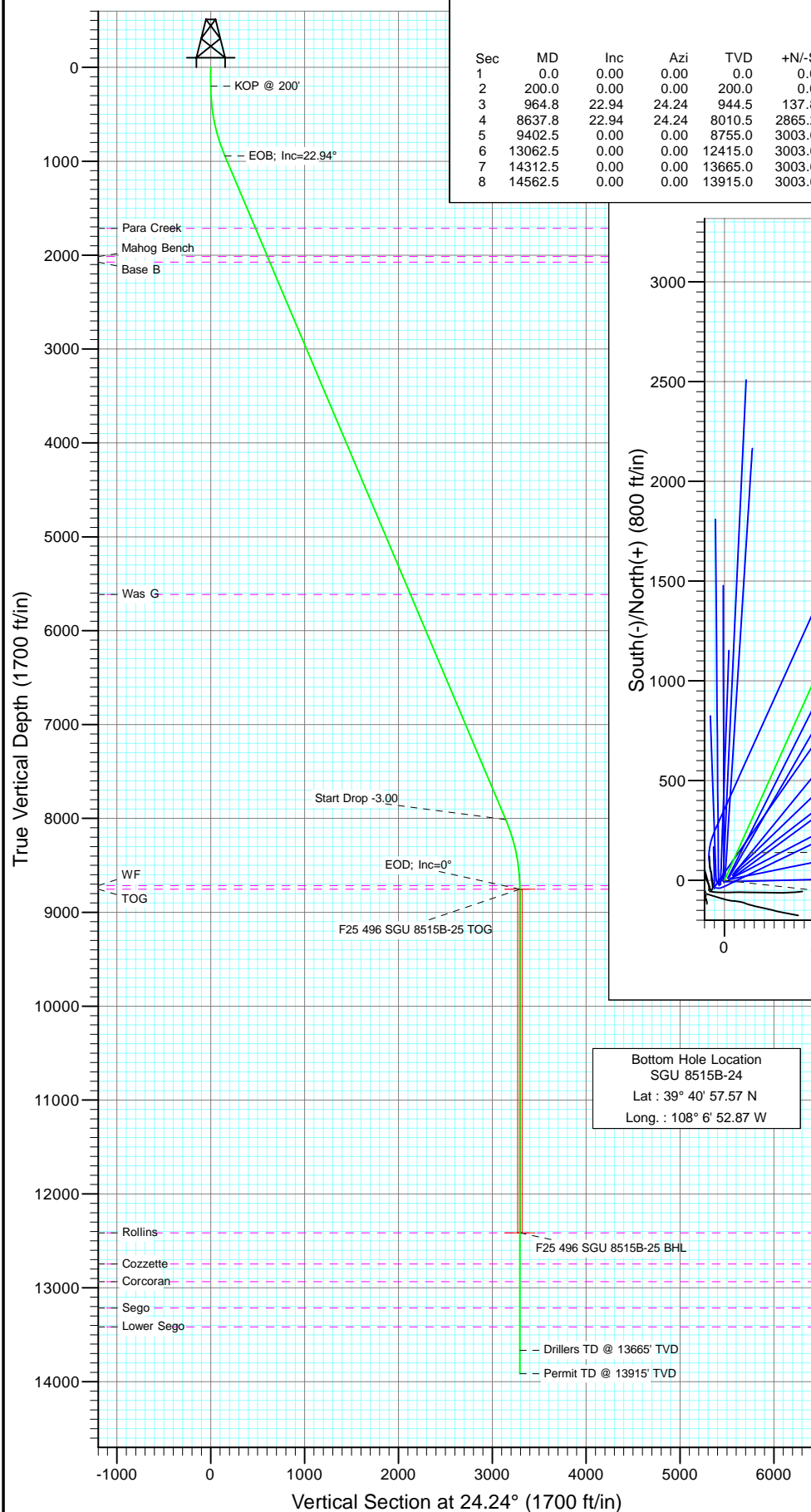
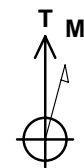
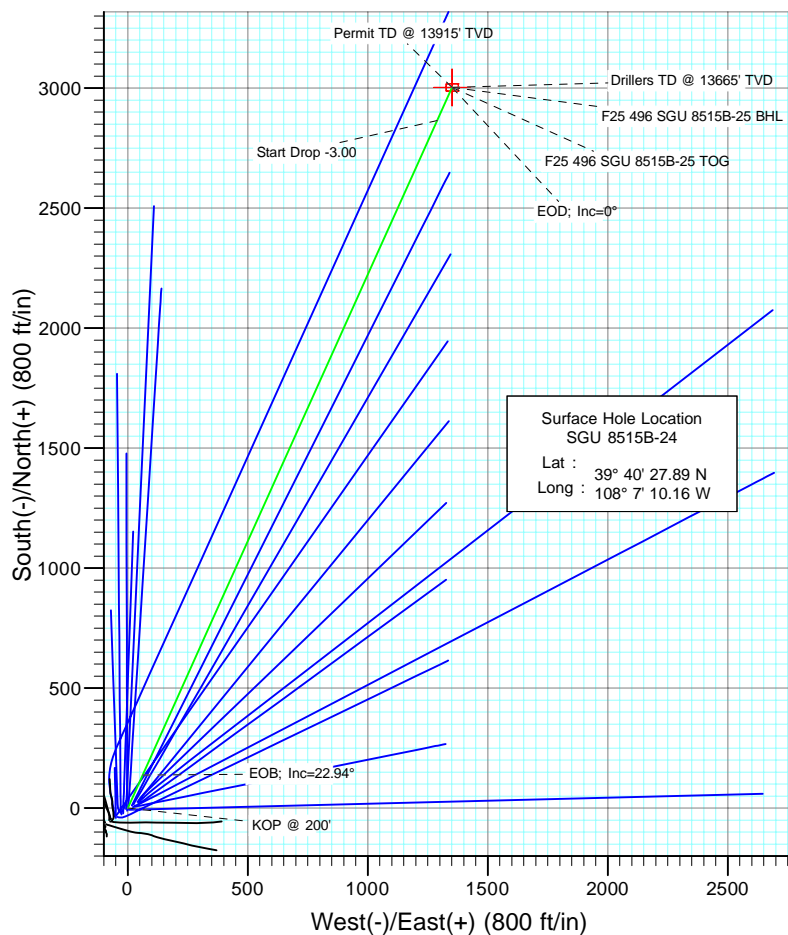




Project: Story Gulch
Site: F25 496
Well: SGU 8515B-24
Wellbore: DD
Design: Plan #1



SECTION DETAILS										
Sec	MD	Inc	Azi	TVD	+N/-S	+E/-W	Dleg	TFace	VSec	Target
1	0.0	0.00	0.00	0.0	0.0	0.0	0.00	0.00	0.0	
2	200.0	0.00	0.00	200.0	0.0	0.0	0.00	0.00	0.0	
3	964.8	22.94	24.24	944.5	137.8	62.0	3.00	24.24	151.1	
4	8637.8	22.94	24.24	8010.5	2865.2	1289.9	0.00	0.00	3142.2	
5	9402.5	0.00	0.00	8755.0	3003.0	1351.9	3.00	180.00	3293.2	F25 496 SGU 8515B-25 TOG
6	13062.5	0.00	0.00	12415.0	3003.0	1351.9	0.00	0.00	3293.2	F25 496 SGU 8515B-25 BHL
7	14312.5	0.00	0.00	13665.0	3003.0	1351.9	0.00	0.00	3293.2	
8	14562.5	0.00	0.00	13915.0	3003.0	1351.9	0.00	0.00	3293.2	



Azimuths to True North
Magnetic North: 10.55°

Magnetic Field
Strength: 52453.6nT
Dip Angle: 65.90°
Date: 5/6/2010
Model: IGRF200510

FORMATION TOP DETAILS

TVDPath	MDPath	Formation
1715.0	1801.5	Para Creek
2015.0	2127.2	Mahog Bench
2075.0	2192.4	Base B
5615.0	6036.5	Was G
8715.0	9362.5	WF TOG
8755.0	9402.5	TOG
12415.0	13062.5	Rollins
12745.0	13392.5	Cozzette
12935.0	13582.5	Corcoran
13215.0	13862.5	Sego
13415.0	14062.5	Lower Sego

DESIGN DETAILS: Plan #1
105XXX; BH
KBE @ 8320.0ft (Original Well Elev)

Target	Azimuth	Origin	N/S	E/W	From TVD
F25 496 SGU 8515B-25 BHL	24	Slot	0.0	0.0	0.0

Cathedral Energy Services

Planning Report

Database:	EDM 5000.1 US Multi Users DB	Local Co-ordinate Reference:	Well SGU 8515B-24
Company:	EnCana Oil & Gas (USA) Inc	TVD Reference:	KBE @ 8320.0ft (Original Well Elev)
Project:	Story Gulch	MD Reference:	KBE @ 8320.0ft (Original Well Elev)
Site:	F25 496	North Reference:	True
Well:	SGU 8515B-24	Survey Calculation Method:	Minimum Curvature
Wellbore:	DD		
Design:	Plan #1		

Project	Story Gulch		
Map System:	US State Plane 1983	System Datum:	Mean Sea Level
Geo Datum:	North American Datum 1983		
Map Zone:	Colorado Central Zone		

Site	F25 496			
Site Position:		Northing:	1,681,091.06 ft	Latitude: 39° 40' 27.10 N
From:	Lat/Long	Easting:	2,262,632.54 ft	Longitude: 108° 7' 11.76 W
Position Uncertainty:	0.0 ft	Slot Radius:	13.200 in	Grid Convergence: -1.65 °

Well	SGU 8515B-24			
Well Position	+N/-S	0.0 ft	Northing:	1,681,167.36 ft
	+E/-W	0.0 ft	Easting:	2,262,759.38 ft
Position Uncertainty		0.0 ft	Wellhead Elevation:	ft
			Ground Level:	8,298.0 ft

Wellbore	DD				
Magnetics	Model Name	Sample Date	Declination (°)	Dip Angle (°)	Field Strength (nT)
	IGRF200510	5/6/2010	10.55	65.90	52,454

Design	Plan #1			
Audit Notes:				
Version:	Phase:	PLAN	Tie On Depth:	0.0
Vertical Section:	Depth From (TVD) (ft)	+N/-S (ft)	+E/-W (ft)	Direction (°)
	0.0	0.0	0.0	24.24

Plan Sections										
Measured Depth (ft)	Inclination (°)	Azimuth (°)	Vertical Depth (ft)	+N/-S (ft)	+E/-W (ft)	Dogleg Rate (°/100ft)	Build Rate (°/100ft)	Turn Rate (°/100ft)	TFO (°)	Target
0.0	0.00	0.00	0.0	0.0	0.0	0.00	0.00	0.00	0.00	
200.0	0.00	0.00	200.0	0.0	0.0	0.00	0.00	0.00	0.00	
964.8	22.94	24.24	944.5	137.8	62.0	3.00	3.00	0.00	24.24	
8,637.8	22.94	24.24	8,010.5	2,865.2	1,289.9	0.00	0.00	0.00	0.00	
9,402.5	0.00	0.00	8,755.0	3,003.0	1,351.9	3.00	-3.00	0.00	180.00	F25 496 SGU 8515B-
13,062.5	0.00	0.00	12,415.0	3,003.0	1,351.9	0.00	0.00	0.00	0.00	F25 496 SGU 8515B-
14,312.5	0.00	0.00	13,665.0	3,003.0	1,351.9	0.00	0.00	0.00	0.00	
14,562.5	0.00	0.00	13,915.0	3,003.0	1,351.9	0.00	0.00	0.00	0.00	

Cathedral Energy Services

Planning Report

Database:	EDM 5000.1 US Multi Users DB	Local Co-ordinate Reference:	Well SGU 8515B-24
Company:	EnCana Oil & Gas (USA) Inc	TVD Reference:	KBE @ 8320.0ft (Original Well Elev)
Project:	Story Gulch	MD Reference:	KBE @ 8320.0ft (Original Well Elev)
Site:	F25 496	North Reference:	True
Well:	SGU 8515B-24	Survey Calculation Method:	Minimum Curvature
Wellbore:	DD		
Design:	Plan #1		

Planned Survey

Measured Depth (ft)	Inclination (°)	Azimuth (°)	Vertical Depth (ft)	+N/-S (ft)	+E/-W (ft)	Vertical Section (ft)	Dogleg Rate (°/100ft)	Build Rate (°/100ft)	Comments / Formations
0.0	0.00	0.00	0.0	0.0	0.0	0.0	0.00	0.00	
100.0	0.00	0.00	100.0	0.0	0.0	0.0	0.00	0.00	
200.0	0.00	0.00	200.0	0.0	0.0	0.0	0.00	0.00	KOP @ 200'
300.0	3.00	24.24	300.0	2.4	1.1	2.6	3.00	3.00	
400.0	6.00	24.24	399.6	9.5	4.3	10.5	3.00	3.00	
500.0	9.00	24.24	498.8	21.4	9.7	23.5	3.00	3.00	
600.0	12.00	24.24	597.1	38.1	17.1	41.7	3.00	3.00	
700.0	15.00	24.24	694.3	59.3	26.7	65.1	3.00	3.00	
800.0	18.00	24.24	790.2	85.2	38.4	93.5	3.00	3.00	
900.0	21.00	24.24	884.4	115.7	52.1	126.9	3.00	3.00	
964.8	22.94	24.24	944.5	137.8	62.0	151.1	3.00	3.00	EOB; Inc=22.94°
1,000.0	22.94	24.24	976.9	150.3	67.7	164.8	0.00	0.00	
1,100.0	22.94	24.24	1,069.0	185.8	83.7	203.8	0.00	0.00	
1,200.0	22.94	24.24	1,161.1	221.4	99.7	242.8	0.00	0.00	
1,300.0	22.94	24.24	1,253.2	256.9	115.7	281.8	0.00	0.00	
1,400.0	22.94	24.24	1,345.3	292.5	131.7	320.7	0.00	0.00	
1,500.0	22.94	24.24	1,437.4	328.0	147.7	359.7	0.00	0.00	
1,600.0	22.94	24.24	1,529.5	363.6	163.7	398.7	0.00	0.00	
1,700.0	22.94	24.24	1,621.6	399.1	179.7	437.7	0.00	0.00	
1,800.0	22.94	24.24	1,713.7	434.7	195.7	476.7	0.00	0.00	
1,801.5	22.94	24.24	1,715.0	435.2	195.9	477.2	0.00	0.00	Para Creek
1,900.0	22.94	24.24	1,805.7	470.2	211.7	515.7	0.00	0.00	
2,000.0	22.94	24.24	1,897.8	505.7	227.7	554.6	0.00	0.00	
2,100.0	22.94	24.24	1,989.9	541.3	243.7	593.6	0.00	0.00	
2,127.2	22.94	24.24	2,015.0	551.0	248.0	604.2	0.00	0.00	Mahog Bench
2,192.4	22.94	24.24	2,075.0	574.1	258.5	629.6	0.00	0.00	Base B
2,200.0	22.94	24.24	2,082.0	576.8	259.7	632.6	0.00	0.00	
2,300.0	22.94	24.24	2,174.1	612.4	275.7	671.6	0.00	0.00	
2,400.0	22.94	24.24	2,266.2	647.9	291.7	710.6	0.00	0.00	
2,500.0	22.94	24.24	2,358.3	683.5	307.7	749.5	0.00	0.00	
2,600.0	22.94	24.24	2,450.4	719.0	323.7	788.5	0.00	0.00	
2,700.0	22.94	24.24	2,542.5	754.6	339.7	827.5	0.00	0.00	
2,800.0	22.94	24.24	2,634.5	790.1	355.7	866.5	0.00	0.00	
2,900.0	22.94	24.24	2,726.6	825.7	371.7	905.5	0.00	0.00	
3,000.0	22.94	24.24	2,818.7	861.2	387.7	944.5	0.00	0.00	
3,100.0	22.94	24.24	2,910.8	896.7	403.7	983.4	0.00	0.00	
3,200.0	22.94	24.24	3,002.9	932.3	419.7	1,022.4	0.00	0.00	
3,300.0	22.94	24.24	3,095.0	967.8	435.7	1,061.4	0.00	0.00	
3,400.0	22.94	24.24	3,187.1	1,003.4	451.7	1,100.4	0.00	0.00	
3,500.0	22.94	24.24	3,279.2	1,038.9	467.7	1,139.4	0.00	0.00	
3,600.0	22.94	24.24	3,371.3	1,074.5	483.7	1,178.3	0.00	0.00	
3,700.0	22.94	24.24	3,463.3	1,110.0	499.7	1,217.3	0.00	0.00	
3,800.0	22.94	24.24	3,555.4	1,145.6	515.7	1,256.3	0.00	0.00	
3,900.0	22.94	24.24	3,647.5	1,181.1	531.7	1,295.3	0.00	0.00	
4,000.0	22.94	24.24	3,739.6	1,216.7	547.7	1,334.3	0.00	0.00	
4,100.0	22.94	24.24	3,831.7	1,252.2	563.7	1,373.3	0.00	0.00	
4,200.0	22.94	24.24	3,923.8	1,287.8	579.7	1,412.2	0.00	0.00	
4,300.0	22.94	24.24	4,015.9	1,323.3	595.8	1,451.2	0.00	0.00	
4,400.0	22.94	24.24	4,108.0	1,358.8	611.8	1,490.2	0.00	0.00	
4,500.0	22.94	24.24	4,200.1	1,394.4	627.8	1,529.2	0.00	0.00	
4,600.0	22.94	24.24	4,292.1	1,429.9	643.8	1,568.2	0.00	0.00	
4,700.0	22.94	24.24	4,384.2	1,465.5	659.8	1,607.1	0.00	0.00	

Cathedral Energy Services

Planning Report

Database:	EDM 5000.1 US Multi Users DB	Local Co-ordinate Reference:	Well SGU 8515B-24
Company:	EnCana Oil & Gas (USA) Inc	TVD Reference:	KBE @ 8320.0ft (Original Well Elev)
Project:	Story Gulch	MD Reference:	KBE @ 8320.0ft (Original Well Elev)
Site:	F25 496	North Reference:	True
Well:	SGU 8515B-24	Survey Calculation Method:	Minimum Curvature
Wellbore:	DD		
Design:	Plan #1		

Planned Survey

Measured Depth (ft)	Inclination (°)	Azimuth (°)	Vertical Depth (ft)	+N/-S (ft)	+E/-W (ft)	Vertical Section (ft)	Dogleg Rate (°/100ft)	Build Rate (°/100ft)	Comments / Formations
4,800.0	22.94	24.24	4,476.3	1,501.0	675.8	1,646.1	0.00	0.00	
4,900.0	22.94	24.24	4,568.4	1,536.6	691.8	1,685.1	0.00	0.00	
5,000.0	22.94	24.24	4,660.5	1,572.1	707.8	1,724.1	0.00	0.00	
5,100.0	22.94	24.24	4,752.6	1,607.7	723.8	1,763.1	0.00	0.00	
5,200.0	22.94	24.24	4,844.7	1,643.2	739.8	1,802.1	0.00	0.00	
5,300.0	22.94	24.24	4,936.8	1,678.8	755.8	1,841.0	0.00	0.00	
5,400.0	22.94	24.24	5,028.9	1,714.3	771.8	1,880.0	0.00	0.00	
5,500.0	22.94	24.24	5,121.0	1,749.8	787.8	1,919.0	0.00	0.00	
5,600.0	22.94	24.24	5,213.0	1,785.4	803.8	1,958.0	0.00	0.00	
5,700.0	22.94	24.24	5,305.1	1,820.9	819.8	1,997.0	0.00	0.00	
5,800.0	22.94	24.24	5,397.2	1,856.5	835.8	2,035.9	0.00	0.00	
5,900.0	22.94	24.24	5,489.3	1,892.0	851.8	2,074.9	0.00	0.00	
6,000.0	22.94	24.24	5,581.4	1,927.6	867.8	2,113.9	0.00	0.00	
6,036.5	22.94	24.24	5,615.0	1,940.5	873.6	2,128.1	0.00	0.00	Was G
6,100.0	22.94	24.24	5,673.5	1,963.1	883.8	2,152.9	0.00	0.00	
6,200.0	22.94	24.24	5,765.6	1,998.7	899.8	2,191.9	0.00	0.00	
6,300.0	22.94	24.24	5,857.7	2,034.2	915.8	2,230.9	0.00	0.00	
6,400.0	22.94	24.24	5,949.8	2,069.8	931.8	2,269.8	0.00	0.00	
6,500.0	22.94	24.24	6,041.8	2,105.3	947.8	2,308.8	0.00	0.00	
6,600.0	22.94	24.24	6,133.9	2,140.8	963.8	2,347.8	0.00	0.00	
6,700.0	22.94	24.24	6,226.0	2,176.4	979.8	2,386.8	0.00	0.00	
6,800.0	22.94	24.24	6,318.1	2,211.9	995.8	2,425.8	0.00	0.00	
6,900.0	22.94	24.24	6,410.2	2,247.5	1,011.8	2,464.7	0.00	0.00	
7,000.0	22.94	24.24	6,502.3	2,283.0	1,027.8	2,503.7	0.00	0.00	
7,100.0	22.94	24.24	6,594.4	2,318.6	1,043.8	2,542.7	0.00	0.00	
7,200.0	22.94	24.24	6,686.5	2,354.1	1,059.8	2,581.7	0.00	0.00	
7,300.0	22.94	24.24	6,778.6	2,389.7	1,075.8	2,620.7	0.00	0.00	
7,400.0	22.94	24.24	6,870.6	2,425.2	1,091.8	2,659.7	0.00	0.00	
7,500.0	22.94	24.24	6,962.7	2,460.8	1,107.8	2,698.6	0.00	0.00	
7,600.0	22.94	24.24	7,054.8	2,496.3	1,123.8	2,737.6	0.00	0.00	
7,700.0	22.94	24.24	7,146.9	2,531.8	1,139.8	2,776.6	0.00	0.00	
7,800.0	22.94	24.24	7,239.0	2,567.4	1,155.8	2,815.6	0.00	0.00	
7,900.0	22.94	24.24	7,331.1	2,602.9	1,171.8	2,854.6	0.00	0.00	
8,000.0	22.94	24.24	7,423.2	2,638.5	1,187.9	2,893.5	0.00	0.00	
8,100.0	22.94	24.24	7,515.3	2,674.0	1,203.9	2,932.5	0.00	0.00	
8,200.0	22.94	24.24	7,607.4	2,709.6	1,219.9	2,971.5	0.00	0.00	
8,300.0	22.94	24.24	7,699.4	2,745.1	1,235.9	3,010.5	0.00	0.00	
8,400.0	22.94	24.24	7,791.5	2,780.7	1,251.9	3,049.5	0.00	0.00	
8,500.0	22.94	24.24	7,883.6	2,816.2	1,267.9	3,088.5	0.00	0.00	
8,600.0	22.94	24.24	7,975.7	2,851.8	1,283.9	3,127.4	0.00	0.00	
8,637.8	22.94	24.24	8,010.5	2,865.2	1,289.9	3,142.2	0.00	0.00	Start Drop -3.00
8,700.0	21.08	24.24	8,068.2	2,886.4	1,299.5	3,165.5	3.00	-3.00	
8,800.0	18.08	24.24	8,162.4	2,917.0	1,313.2	3,199.0	3.00	-3.00	
8,900.0	15.08	24.24	8,258.2	2,943.0	1,325.0	3,227.5	3.00	-3.00	
9,000.0	12.08	24.24	8,355.4	2,964.4	1,334.6	3,251.0	3.00	-3.00	
9,100.0	9.08	24.24	8,453.7	2,981.1	1,342.1	3,269.3	3.00	-3.00	
9,200.0	6.08	24.24	8,552.8	2,993.2	1,347.5	3,282.5	3.00	-3.00	
9,300.0	3.08	24.24	8,652.5	3,000.4	1,350.8	3,290.5	3.00	-3.00	
9,362.5	1.20	24.24	8,715.0	3,002.6	1,351.8	3,292.8	3.00	-3.00	WF
9,400.0	0.08	24.24	8,752.5	3,003.0	1,351.9	3,293.2	3.00	-3.00	
9,402.5	0.00	0.00	8,755.0	3,003.0	1,351.9	3,293.2	3.00	-3.00	EOD; Inc=0° - TOG - F25 496 SGU 8515B-25 T
9,500.0	0.00	0.00	8,852.5	3,003.0	1,351.9	3,293.2	0.00	0.00	

Cathedral Energy Services

Planning Report

Database:	EDM 5000.1 US Multi Users DB	Local Co-ordinate Reference:	Well SGU 8515B-24
Company:	EnCana Oil & Gas (USA) Inc	TVD Reference:	KBE @ 8320.0ft (Original Well Elev)
Project:	Story Gulch	MD Reference:	KBE @ 8320.0ft (Original Well Elev)
Site:	F25 496	North Reference:	True
Well:	SGU 8515B-24	Survey Calculation Method:	Minimum Curvature
Wellbore:	DD		
Design:	Plan #1		

Planned Survey									
Measured Depth (ft)	Inclination (°)	Azimuth (°)	Vertical Depth (ft)	+N/-S (ft)	+E/-W (ft)	Vertical Section (ft)	Dogleg Rate (°/100ft)	Build Rate (°/100ft)	Comments / Formations
9,600.0	0.00	0.00	8,952.5	3,003.0	1,351.9	3,293.2	0.00	0.00	
9,700.0	0.00	0.00	9,052.5	3,003.0	1,351.9	3,293.2	0.00	0.00	
9,800.0	0.00	0.00	9,152.5	3,003.0	1,351.9	3,293.2	0.00	0.00	
9,900.0	0.00	0.00	9,252.5	3,003.0	1,351.9	3,293.2	0.00	0.00	
10,000.0	0.00	0.00	9,352.5	3,003.0	1,351.9	3,293.2	0.00	0.00	
10,100.0	0.00	0.00	9,452.5	3,003.0	1,351.9	3,293.2	0.00	0.00	
10,200.0	0.00	0.00	9,552.5	3,003.0	1,351.9	3,293.2	0.00	0.00	
10,300.0	0.00	0.00	9,652.5	3,003.0	1,351.9	3,293.2	0.00	0.00	
10,400.0	0.00	0.00	9,752.5	3,003.0	1,351.9	3,293.2	0.00	0.00	
10,500.0	0.00	0.00	9,852.5	3,003.0	1,351.9	3,293.2	0.00	0.00	
10,600.0	0.00	0.00	9,952.5	3,003.0	1,351.9	3,293.2	0.00	0.00	
10,700.0	0.00	0.00	10,052.5	3,003.0	1,351.9	3,293.2	0.00	0.00	
10,800.0	0.00	0.00	10,152.5	3,003.0	1,351.9	3,293.2	0.00	0.00	
10,900.0	0.00	0.00	10,252.5	3,003.0	1,351.9	3,293.2	0.00	0.00	
11,000.0	0.00	0.00	10,352.5	3,003.0	1,351.9	3,293.2	0.00	0.00	
11,100.0	0.00	0.00	10,452.5	3,003.0	1,351.9	3,293.2	0.00	0.00	
11,200.0	0.00	0.00	10,552.5	3,003.0	1,351.9	3,293.2	0.00	0.00	
11,300.0	0.00	0.00	10,652.5	3,003.0	1,351.9	3,293.2	0.00	0.00	
11,400.0	0.00	0.00	10,752.5	3,003.0	1,351.9	3,293.2	0.00	0.00	
11,500.0	0.00	0.00	10,852.5	3,003.0	1,351.9	3,293.2	0.00	0.00	
11,600.0	0.00	0.00	10,952.5	3,003.0	1,351.9	3,293.2	0.00	0.00	
11,700.0	0.00	0.00	11,052.5	3,003.0	1,351.9	3,293.2	0.00	0.00	
11,800.0	0.00	0.00	11,152.5	3,003.0	1,351.9	3,293.2	0.00	0.00	
11,900.0	0.00	0.00	11,252.5	3,003.0	1,351.9	3,293.2	0.00	0.00	
12,000.0	0.00	0.00	11,352.5	3,003.0	1,351.9	3,293.2	0.00	0.00	
12,100.0	0.00	0.00	11,452.5	3,003.0	1,351.9	3,293.2	0.00	0.00	
12,200.0	0.00	0.00	11,552.5	3,003.0	1,351.9	3,293.2	0.00	0.00	
12,300.0	0.00	0.00	11,652.5	3,003.0	1,351.9	3,293.2	0.00	0.00	
12,400.0	0.00	0.00	11,752.5	3,003.0	1,351.9	3,293.2	0.00	0.00	
12,500.0	0.00	0.00	11,852.5	3,003.0	1,351.9	3,293.2	0.00	0.00	
12,600.0	0.00	0.00	11,952.5	3,003.0	1,351.9	3,293.2	0.00	0.00	
12,700.0	0.00	0.00	12,052.5	3,003.0	1,351.9	3,293.2	0.00	0.00	
12,800.0	0.00	0.00	12,152.5	3,003.0	1,351.9	3,293.2	0.00	0.00	
12,900.0	0.00	0.00	12,252.5	3,003.0	1,351.9	3,293.2	0.00	0.00	
13,000.0	0.00	0.00	12,352.5	3,003.0	1,351.9	3,293.2	0.00	0.00	
13,062.5	0.00	0.00	12,415.0	3,003.0	1,351.9	3,293.2	0.00	0.00	Rollins - F25 496 SGU 8515B-25 BHL
13,100.0	0.00	0.00	12,452.5	3,003.0	1,351.9	3,293.2	0.00	0.00	
13,200.0	0.00	0.00	12,552.5	3,003.0	1,351.9	3,293.2	0.00	0.00	
13,300.0	0.00	0.00	12,652.5	3,003.0	1,351.9	3,293.2	0.00	0.00	
13,392.5	0.00	0.00	12,745.0	3,003.0	1,351.9	3,293.2	0.00	0.00	Cozzette
13,400.0	0.00	0.00	12,752.5	3,003.0	1,351.9	3,293.2	0.00	0.00	
13,500.0	0.00	0.00	12,852.5	3,003.0	1,351.9	3,293.2	0.00	0.00	
13,582.5	0.00	0.00	12,935.0	3,003.0	1,351.9	3,293.2	0.00	0.00	Corcoran
13,600.0	0.00	0.00	12,952.5	3,003.0	1,351.9	3,293.2	0.00	0.00	
13,700.0	0.00	0.00	13,052.5	3,003.0	1,351.9	3,293.2	0.00	0.00	
13,800.0	0.00	0.00	13,152.5	3,003.0	1,351.9	3,293.2	0.00	0.00	
13,862.5	0.00	0.00	13,215.0	3,003.0	1,351.9	3,293.2	0.00	0.00	Sego
13,900.0	0.00	0.00	13,252.5	3,003.0	1,351.9	3,293.2	0.00	0.00	
14,000.0	0.00	0.00	13,352.5	3,003.0	1,351.9	3,293.2	0.00	0.00	
14,062.5	0.00	0.00	13,415.0	3,003.0	1,351.9	3,293.2	0.00	0.00	Lower Sego
14,100.0	0.00	0.00	13,452.5	3,003.0	1,351.9	3,293.2	0.00	0.00	
14,200.0	0.00	0.00	13,552.5	3,003.0	1,351.9	3,293.2	0.00	0.00	

Cathedral Energy Services

Planning Report

Database:	EDM 5000.1 US Multi Users DB	Local Co-ordinate Reference:	Well SGU 8515B-24
Company:	EnCana Oil & Gas (USA) Inc	TVD Reference:	KBE @ 8320.0ft (Original Well Elev)
Project:	Story Gulch	MD Reference:	KBE @ 8320.0ft (Original Well Elev)
Site:	F25 496	North Reference:	True
Well:	SGU 8515B-24	Survey Calculation Method:	Minimum Curvature
Wellbore:	DD		
Design:	Plan #1		

Planned Survey									
Measured Depth (ft)	Inclination (°)	Azimuth (°)	Vertical Depth (ft)	+N/-S (ft)	+E/-W (ft)	Vertical Section (ft)	Dogleg Rate (°/100ft)	Build Rate (°/100ft)	Comments / Formations
14,300.0	0.00	0.00	13,652.5	3,003.0	1,351.9	3,293.2	0.00	0.00	
14,312.5	0.00	0.00	13,665.0	3,003.0	1,351.9	3,293.2	0.00	0.00	Drillers TD @ 13665' TVD
14,400.0	0.00	0.00	13,752.5	3,003.0	1,351.9	3,293.2	0.00	0.00	
14,500.0	0.00	0.00	13,852.5	3,003.0	1,351.9	3,293.2	0.00	0.00	
14,562.5	0.00	0.00	13,915.0	3,003.0	1,351.9	3,293.2	0.00	0.00	Permit TD @ 13915' TVD

Targets									
Target Name	Dip Angle (°)	Dip Dir. (°)	TVD (ft)	+N/-S (ft)	+E/-W (ft)	Northing (ft)	Easting (ft)	Latitude	Longitude
- hit/miss target									
- Shape									
F25 496 SGU 8515B-25	0.00	0.00	12,415.0	3,003.0	1,351.9	1,684,130.08	2,264,197.33	39° 40' 57.57 N	108° 6' 52.87 W
- plan hits target center									
- Rectangle (sides W30.0 H50.0 D0.0)									
F25 496 SGU 8515B-25	0.00	0.00	8,755.0	3,003.0	1,351.9	1,684,130.08	2,264,197.33	39° 40' 57.57 N	108° 6' 52.87 W
- plan hits target center									
- Point									

Formations					
Measured Depth (ft)	Vertical Depth (ft)	Name	Lithology	Dip (°)	Dip Direction (°)
1,801.5	1,715.0	Para Creek		0.00	
2,127.2	2,015.0	Mahog Bench		0.00	
2,192.4	2,075.0	Base B		0.00	
6,036.5	5,615.0	Was G		0.00	
9,362.5	8,715.0	WF		0.00	
9,402.5	8,755.0	TOG		0.00	
13,062.5	12,415.0	Rollins		0.00	
13,392.5	12,745.0	Cozzette		0.00	
13,582.5	12,935.0	Corcoran		0.00	
13,862.5	13,215.0	Sego		0.00	
14,062.5	13,415.0	Lower Sego		0.00	

Plan Annotations				
Measured Depth (ft)	Vertical Depth (ft)	Local Coordinates		Comment
		+N/-S (ft)	+E/-W (ft)	
200.0	200.0	0.0	0.0	KOP @ 200'
964.8	944.5	137.8	62.0	EOB; Inc=22.94°
8,637.8	8,010.5	2,865.2	1,289.9	Start Drop -3.00
9,402.5	8,755.0	3,003.0	1,351.9	EOD; Inc=0°
14,312.5	13,665.0	3,003.0	1,351.9	Drillers TD @ 13665' TVD
14,562.5	13,915.0	3,003.0	1,351.9	Permit TD @ 13915' TVD