

T4S, R96W, 6th P.M.

SGU 8514D-24 F25 496 O
TARGET BOTTOM HOLE

EnCana Oil & Gas (USA) Inc.

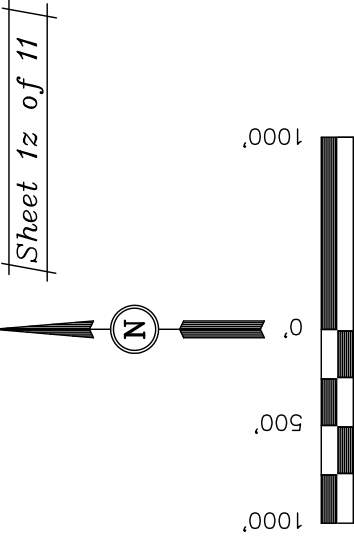
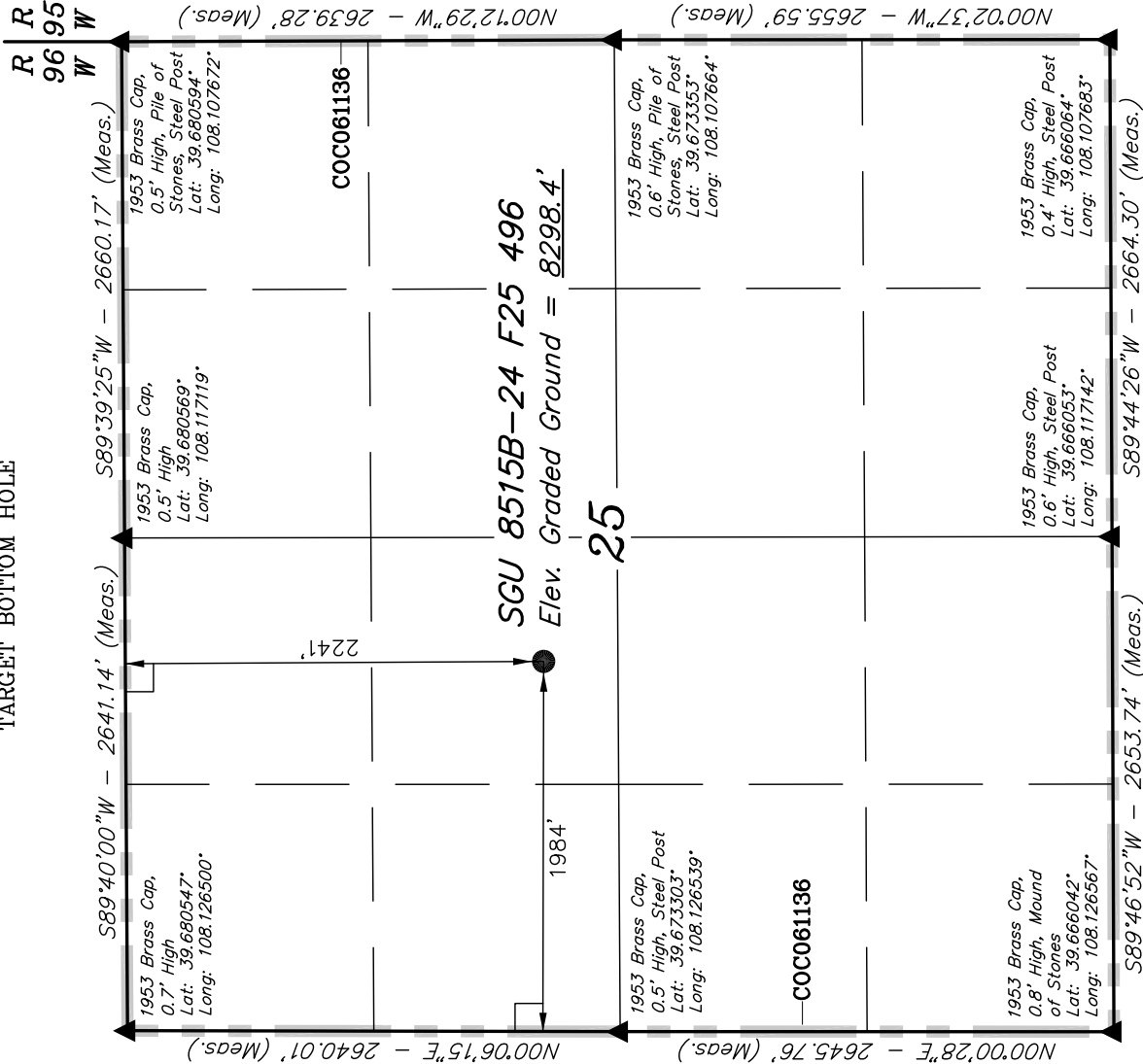
Well location, SGU 8515B-24 F25 496 (SURFACE LOCATION), located as shown in the SE 1/4 NW 1/4 of Section 25, T4S, R96W, 6th P.M., Garfield County, Colorado.

BASIS OF ELEVATION

BENCH MARK (H79) LOCATED IN THE NE 1/4 OF SECTION 25, T4S, R98W, 6th P.M. TAKEN FROM THE BULL FORK QUADRANGLE, COLORADO, 7.5 MINUTE SERIES (TOPO GRAPHICAL MAP) PUBLISHED BY THE UNITED STATES DEPARTMENT OF THE INTERIOR, GEOLOGICAL SURVEY. SAID ELEVATION IS MARKED AS BEING 8535 FEET.

BASIS OF BEARINGS

BASIS OF BEARINGS IS A G.P.S. OBSERVATION.



CERTIFICATE

THIS IS TO CERTIFY THAT THE ABOVE POINT WAS PREPARED FROM FIELD NOTES OF ACTUAL SURVEYS MADE BY ME OR UNDER MY SUPERVISION AND THAT THE SAME ARE TRUE AND CORRECT TO THE BEST OF MY KNOWLEDGE AND BELIEF.

REGISTERED LAND SURVEYOR
REGISTRATION NO. 1289
STATE OF COLORADO

UNTAH ENGINEERING & LAND SURVEYING
85 SOUTH 200 EAST - VERNAL, UTAH 84078
(435) 789-1017

SCALE 1" = 1000'	DATE SURVEYED: 08-07-09	DATE DRAWN: 03-23-10
PARTY D.K. J.R. D.R.B.	REFERENCES G.L.O. PLAT	
WEATHER COLD	FILE	

LEGEND:
└ = 90° SYMBOL
● = PROPOSED WELL HEAD.
▲ = SECTION CORNERS LOCATED.

NOTE:
THE PROPOSED BOTTOM HOLE FOR THIS WELL IS LOCATED IN THE SW 1/4 SE 1/4 OF SECTION 24, T4S, R96W, 6th P.M. AT A DISTANCE OF 758' FSL 1975' FEL. IT BEARS N24°05'08"E 3294.62' FROM THE PROPOSED WELL HEAD.

T4S, R96W, 6th P.M.

Well location, SGU 8515B-24 F25 496 (TARGET BOTTOM HOLE), located as shown in the SW 1/4 SE 1/4 of Section 24, T4S, R96W, 6th P.M., Garfield County, Colorado.

BASIS OF ELEVATION

BENCH MARK (H79) LOCATED IN THE NE 1/4 OF SECTION 25, T4S, R98W, 6th P.M. TAKEN FROM THE BULL FORK QUADRANGLE, COLORADO, 7.5 MINUTE SERIES (TOPO GRAPHICAL MAP) PUBLISHED BY THE UNITED STATES DEPARTMENT OF THE INTERIOR, GEOLOGICAL SURVEY. SAID ELEVATION IS MARKED AS BEING 8535 FEET.

BASIS OF BEARINGS

BASIS OF BEARINGS IS A G.P.S. OBSERVATION.



CERTIFICATE

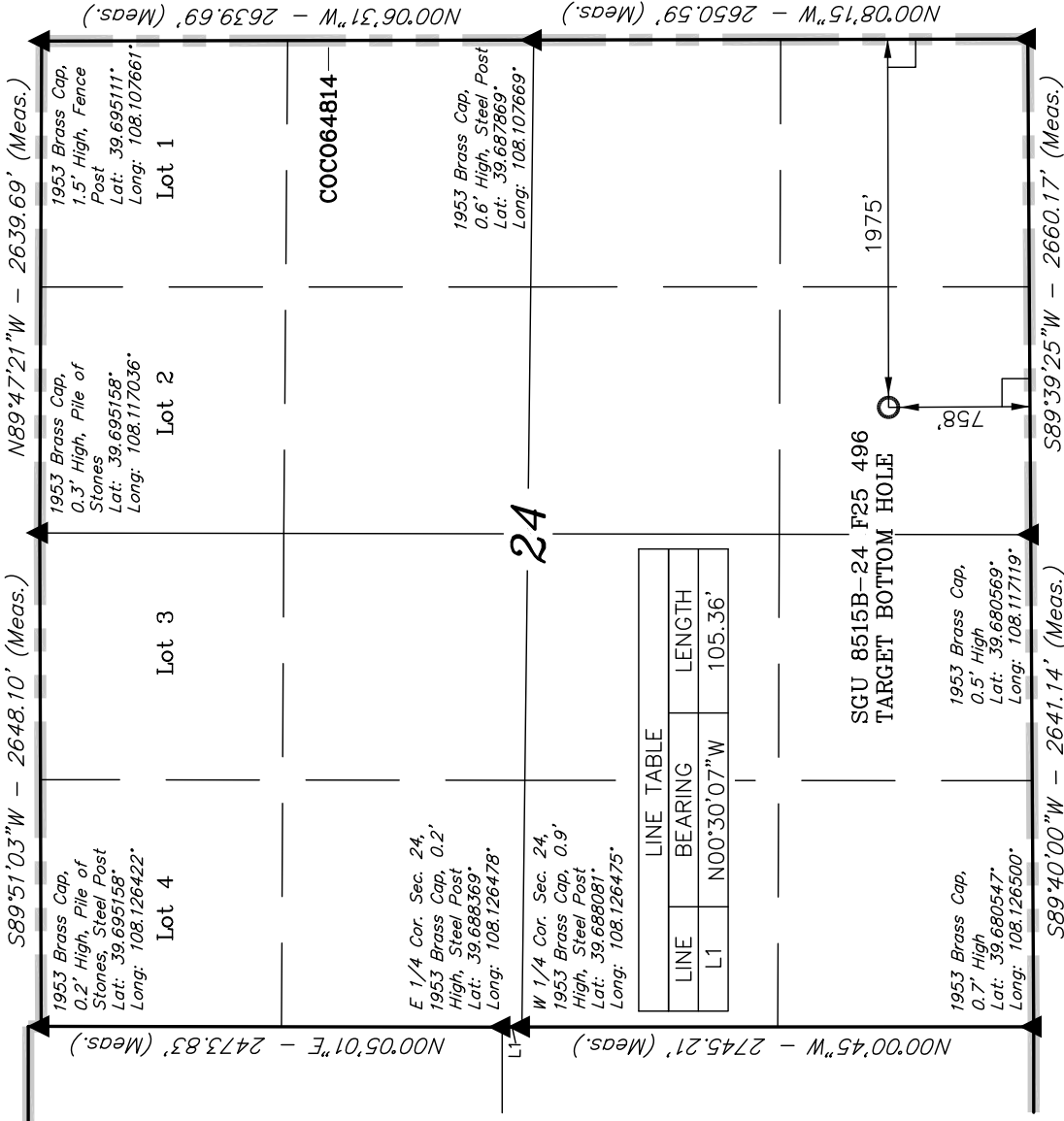
THIS IS TO CERTIFY THAT THE ABOVE PLAT WAS PREPARED FROM FIELD NOTES OF ACTUAL SURVEYS MADE BY ME OR UNDER MY SUPERVISION AND THAT THE SAME ARE TRUE AND CORRECT TO THE BEST OF MY KNOWLEDGE AND BELIEF.

REGISTERED LAND SURVEYOR
REGISTRATION NO. 17082
STATE OF COLORADO

UNTAH ENGINEERING & LAND SURVEYING
85 SOUTH 200 EAST - VERNAL, UTAH 84078
(435) 789-1017

SCALE 1" = 1000'
PARTY D.K. J.R. D.R.B.
WEATHER COLD
DATE SURVEYED: 08-07-09
DATE DRAWN: 03-23-10

REFERENCES G.L.O. PLAT
FILE
EnCana Oil & Gas (USA) INC.



NOTE:
THE PROPOSED BOTTOM HOLE FOR THIS
WELL BEARS N24°05'08"E 3294.62' FROM
THE PROPOSED WELL HEAD.

LEGEND:

- = 90° SYMBOL
- = PROPOSED WELL HEAD.
- ▲ = SECTION CORNERS LOCATED.

NAD 83 (TARGET BOTTOM HOLE)	
LATITUDE = 39°40'57.57" (39.682658)	
LONGITUDE = 108°06'52.87" (108.114686)	
NAD 27 (TARGET BOTTOM HOLE)	
LATITUDE = 39°40'57.66" (39.682683)	
LONGITUDE = 108°06'50.58" (108.114050)	