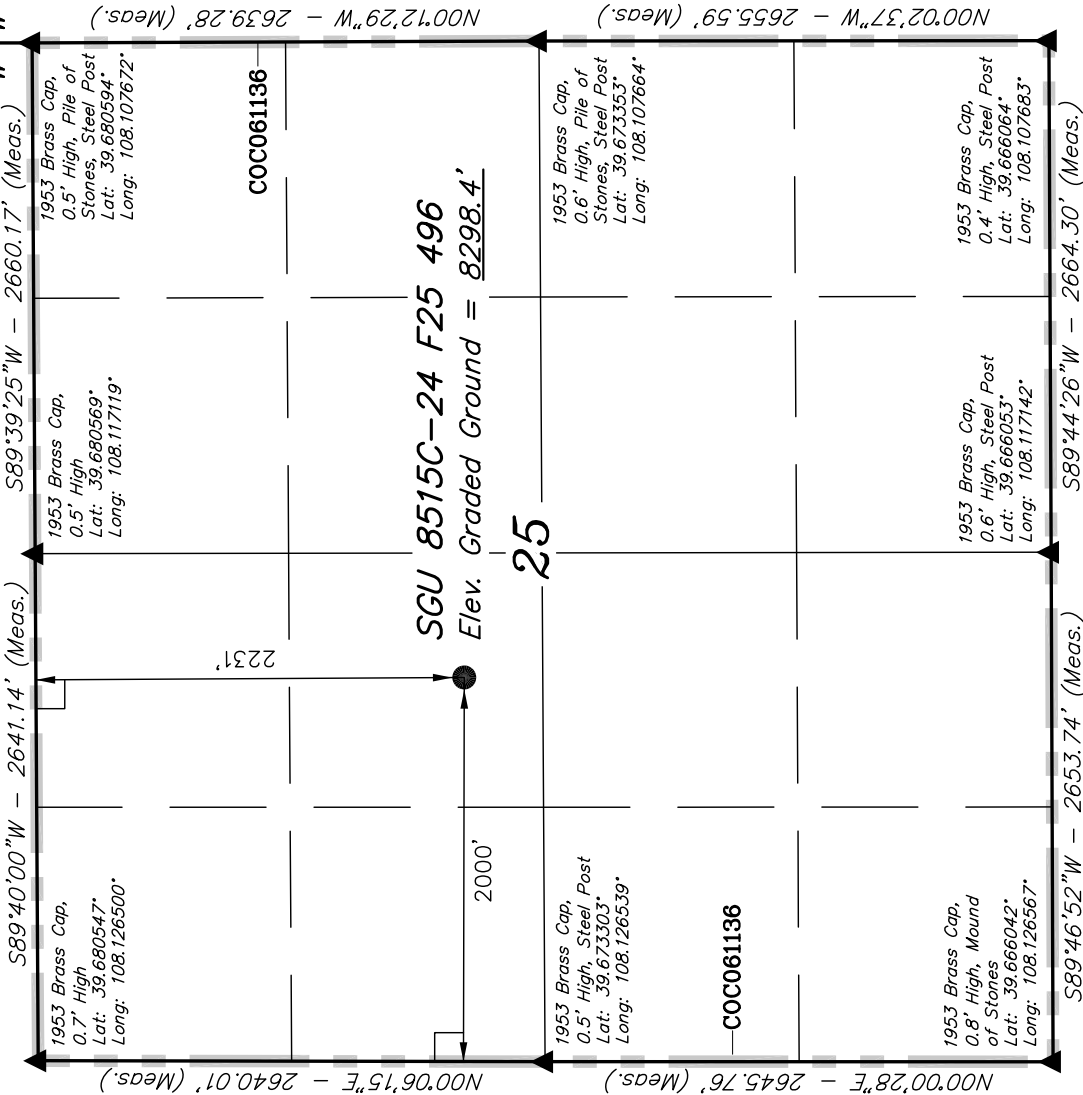


T4S, R96W, 6th P.M.

SGU 8515C-24 F25 496
TARGET BOTTOM HOLE

R 96
W 95



EnCana OIL & GAS (USA) INC.

Well location, SGU 8515C-24 F25 496 (SURFACE LOCATION), located as shown in the SE 1/4 NW 1/4 of Section 25, T4S, R96W, 6th P.M., Garfield County, Colorado.

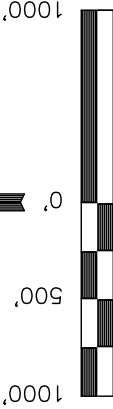
BASIS OF ELEVATION

BENCH MARK (H79) LOCATED IN THE NE 1/4 OF SECTION 25, T4S, R98W, 6th P.M. TAKEN FROM THE BULL FORK QUADRANGLE, COLORADO, 7.5 MINUTE SERIES (TOPO GRAPHICAL MAP) PUBLISHED BY THE UNITED STATES DEPARTMENT OF THE INTERIOR, GEOLOGICAL SURVEY. SAID ELEVATION IS MARKED AS BEING 8535 FEET.

BASIS OF BEARINGS

BASIS OF BEARINGS IS A G.P.S. OBSERVATION.

Sheet 1dd of 11



SCALE

CERTIFICATE

THIS IS TO CERTIFY THAT THE ABOVE PLAT WAS PREPARED FROM FIELD NOTES OF ACTUAL SURVEYS MADE BY ME OR UNDER MY SUPERVISION AND THAT THE SAME ARE TRUE AND CORRECT TO THE BEST OF MY KNOWLEDGE AND BELIEF.

REGISTERED LAND SURVEYOR
REGISTRATION NO. 17692
STATE OF COLORADO

UINTAH ENGINEERING & LAND SURVEYING
85 SOUTH 200 EAST - VERNAL, UTAH 84078
(435) 789-1017

LEGEND:

— = 90° SYMBOL

● = PROPOSED WELL HEAD.

▲ = SECTION CORNERS LOCATED.

NOTE:
THE PROPOSED BOTTOM HOLE FOR THIS WELL IS LOCATED IN THE SW 1/4 SE 1/4 OF SECTION 24, T4S, R96W, 6th P.M. AT A DISTANCE OF 403' FSL 1986° FEL. IT BEARS N02°29'03"E 2516.14' FROM THE PROPOSED WELL HEAD.

PDOP = 1.4

NAD 83 (SURFACE LOCATION)

LATITUDE = 39°40'28.00" (39.674444)
LONGITUDE = 108°07'09.95" (108.119431)

NAD 27 (SURFACE LOCATION)

LATITUDE = 39°40'28.09" (39.674469)
LONGITUDE = 108°07'07.66" (108.118794)

SCALE 1" = 1000'

DATE SURVEYED: 08-07-09

DATE DRAWN: 03-23-10

PARTY

D.K. J.R. D.R.B.

REFERENCES

G.L.O. PLAT

WEATHER

COLD

FILE

EnCana OIL & GAS (USA) INC.

T4S, R96W, 6th P.M.

EnCana Oil & Gas (USA) Inc.

Well location, SGU 8515C-24 F25 496 (TARGET BOTTOM HOLE), located as shown in the SW 1/4 SE 1/4 of Section 24, T4S, R96W, 6th P.M., Garfield County, Colorado.

BASIS OF ELEVATION

BENCH MARK (H79) LOCATED IN THE NE 1/4 OF SECTION 25, T4S, R98W, 6th P.M. TAKEN FROM THE BULL FORK QUADRANGLE, COLORADO, 7.5 MINUTE SERIES (TOPO GRAPHICAL MAP) PUBLISHED BY THE UNITED STATES DEPARTMENT OF THE INTERIOR, GEOLOGICAL SURVEY. SAID ELEVATION IS MARKED AS BEING 8535 FEET.

BASIS OF BEARINGS

BASIS OF BEARINGS IS A G.P.S. OBSERVATION.

Sheet 1 of 11



SCALE

CERTIFICATE
THIS IS TO CERTIFY THAT THE ABOVE PLAT WAS PREPARED FROM FIELD NOTES OF ACTUAL SURVEYS MADE BY ME OR UNDER MY SUPERVISION AND THAT THE SAME ARE TRUE AND CORRECT TO THE BEST OF MY KNOWLEDGE AND BELIEF.

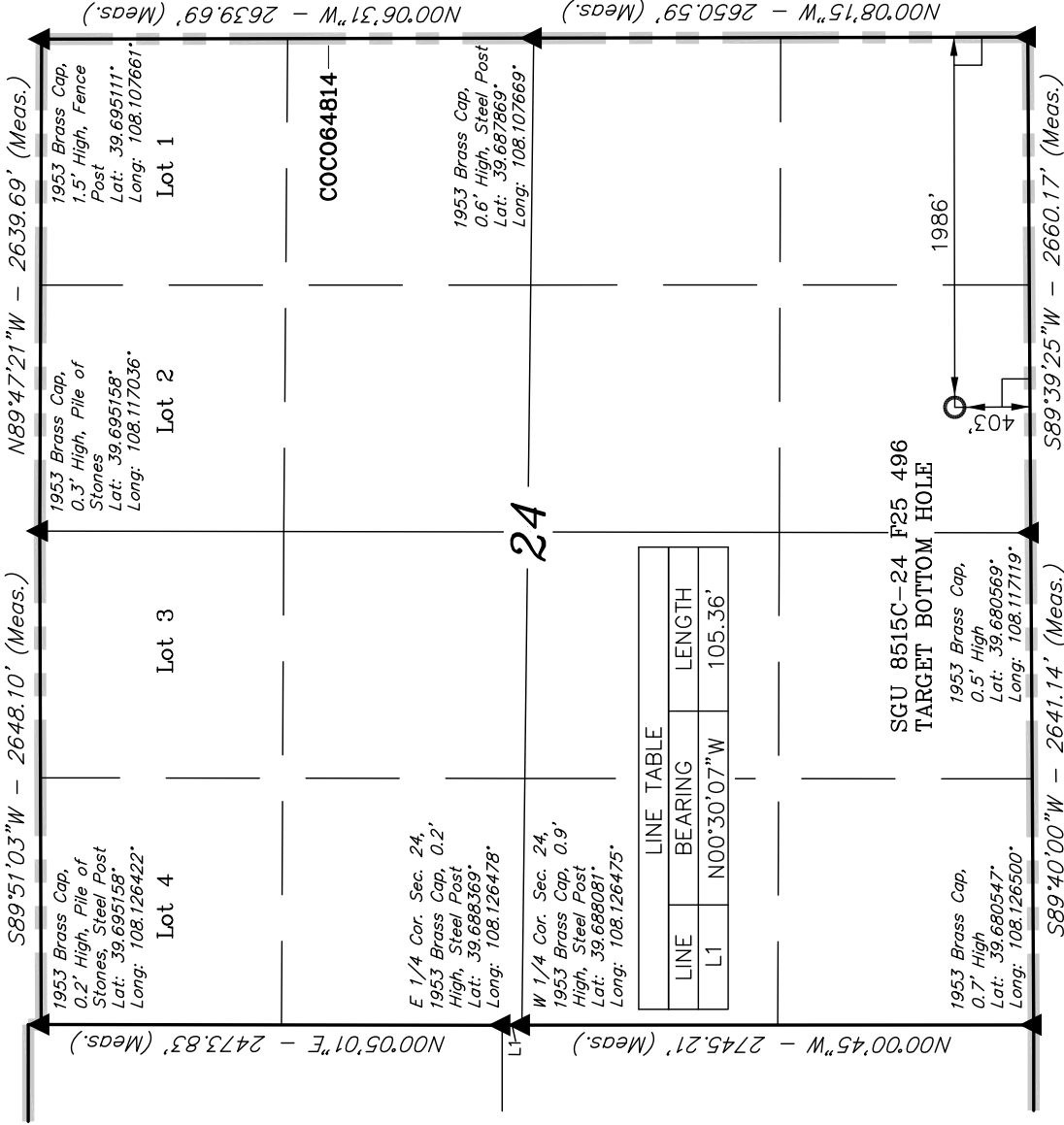


UNTAH ENGINEERING & LAND SURVEYING
85 SOUTH 200 EAST - VERNAL, UTAH 84078
(435) 789-1017

LEGEND:

- = 90° SYMBOL
- = PROPOSED WELL HEAD.
- ▲ = SECTION CORNERS LOCATED.

NOTE:
THE PROPOSED BOTTOM HOLE FOR THIS WELL BEARS N26°30'45"E 2952.01' FROM THE PROPOSED WELL HEAD.



NAD 83 (TARGET BOTTOM HOLE)	
LATITUDE = 39°40'54.06"	(39.681683)
LONGITUDE = 108°06'53.01"	(108.114725)
NAD 27 (TARGET BOTTOM HOLE)	
LATITUDE = 39°40'54.15"	(39.681708)
LONGITUDE = 108°06'50.72"	(108.114089)

1953 Brass Cap,
0.3' High, Pile of
Stones, Steel Post
Lat: 39.695158°
Long: 108.117036°

1953 Brass Cap,
1.5' High, Fence
Post
Lat: 39.695111°
Long: 108.107661°

COC064814

1953 Brass Cap,
0.6' High, Steel Post
Lat: 39.687869°
Long: 108.107669°

LINE TABLE		
LINE	BEARING	LENGTH
L1	N00°30'07"W	105.36'

SGU 8515C-24 F25 496
TARGET BOTTOM HOLE

1953 Brass Cap,
0.5' High
Lat: 39.680569°
Long: 108.117119°

S89°40'00"W - 2641.14' (Meas.)

S89°39'25"W - 2660.17' (Meas.)

1953 Brass Cap,
0.5' High, Pile of
Stones, Steel Post
Lat: 39.680594°
Long: 108.107672°

N00°08'15"W - 2650.59' (Meas.)

S89°51'03"W - 2648.10' (Meas.)

N00°05'01"E - 2473.83' (Meas.)

E 1/4 Cor. Sec. 24,
1953 Brass Cap, 0.2'
High, Steel Post
Lat: 39.688369°
Long: 108.126478°

W 1/4 Cor. Sec. 24,
1953 Brass Cap, 0.9'
High, Steel Post
Lat: 39.688081°
Long: 108.126475°

Lot 4

Lot 3

Lot 2

Lot 1

Lot 1