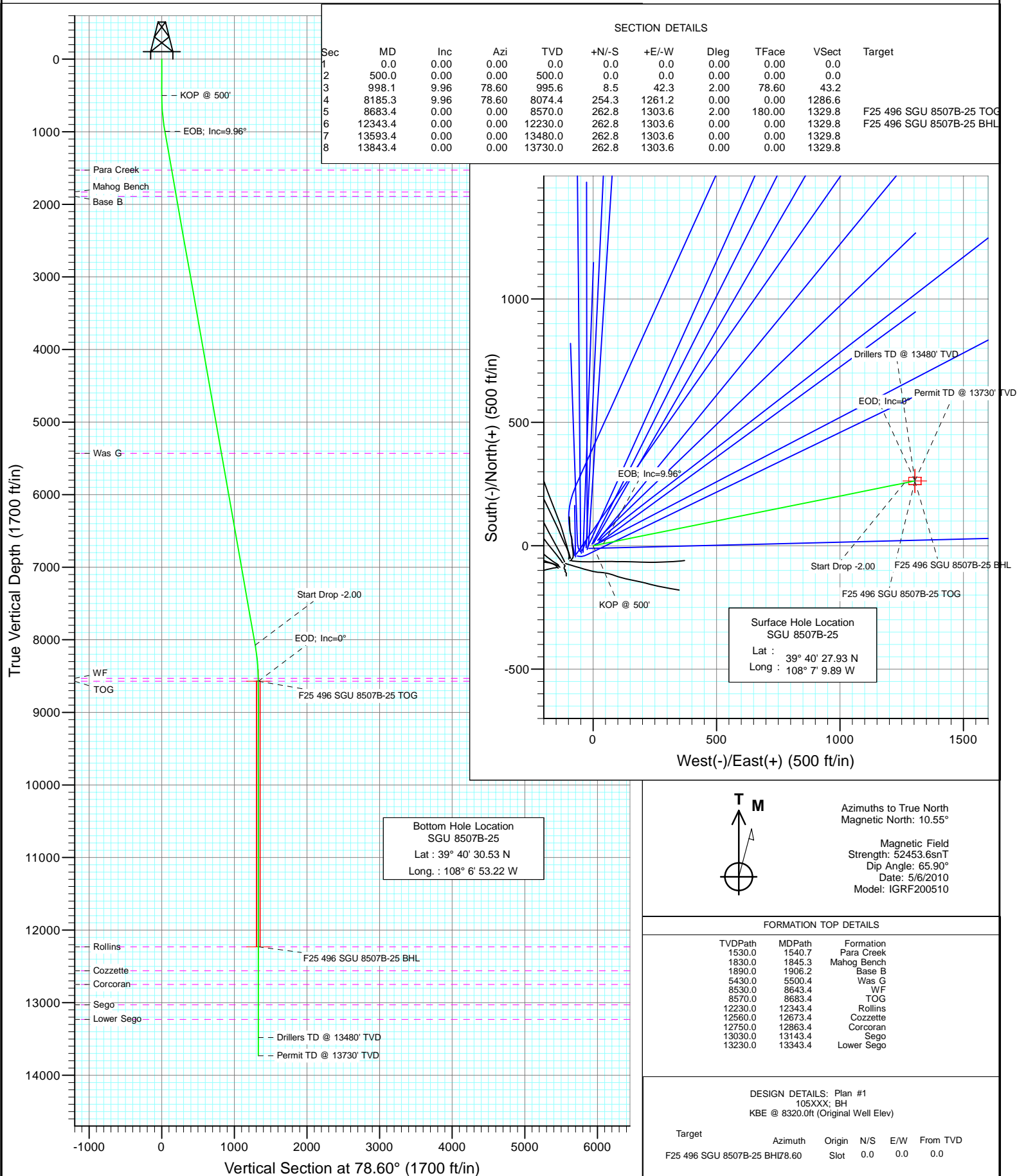




Project: Story Gulch  
Site: F25 496  
Well: SGU 8507B-25  
Wellbore: DD  
Design: Plan #1



Vertical Section at 78.60° (1700 ft/in)

# Cathedral Energy Services

## Planning Report

<b>Database:</b>	EDM 5000.1 US Multi Users DB	<b>Local Co-ordinate Reference:</b>	Well SGU 8507B-25
<b>Company:</b>	EnCana Oil & Gas (USA) Inc	<b>TVD Reference:</b>	KBE @ 8320.0ft (Original Well Elev)
<b>Project:</b>	Story Gulch	<b>MD Reference:</b>	KBE @ 8320.0ft (Original Well Elev)
<b>Site:</b>	F25 496	<b>North Reference:</b>	True
<b>Well:</b>	SGU 8507B-25	<b>Survey Calculation Method:</b>	Minimum Curvature
<b>Wellbore:</b>	DD		
<b>Design:</b>	Plan #1		

<b>Project</b>	Story Gulch		
<b>Map System:</b>	US State Plane 1983	<b>System Datum:</b>	Mean Sea Level
<b>Geo Datum:</b>	North American Datum 1983		
<b>Map Zone:</b>	Colorado Central Zone		

<b>Site</b>	F25 496			
<b>Site Position:</b>		<b>Northing:</b>	1,681,091.06 ft	<b>Latitude:</b> 39° 40' 27.10 N
<b>From:</b>	Lat/Long	<b>Easting:</b>	2,262,632.54 ft	<b>Longitude:</b> 108° 7' 11.76 W
<b>Position Uncertainty:</b>	0.0 ft	<b>Slot Radius:</b>	13.200 in	<b>Grid Convergence:</b> -1.65 °

<b>Well</b>	SGU 8507B-25			
<b>Well Position</b>	<b>+N/-S</b>	0.0 ft	<b>Northing:</b>	1,681,170.89 ft
	<b>+E/-W</b>	0.0 ft	<b>Easting:</b>	2,262,780.63 ft
<b>Position Uncertainty</b>		0.0 ft	<b>Wellhead Elevation:</b>	ft
			<b>Ground Level:</b>	8,298.0 ft

<b>Wellbore</b>	DD				
<b>Magnetics</b>	<b>Model Name</b>	<b>Sample Date</b>	<b>Declination (°)</b>	<b>Dip Angle (°)</b>	<b>Field Strength (nT)</b>
	IGRF200510	5/6/2010	10.55	65.90	52,454

<b>Design</b>	Plan #1			
<b>Audit Notes:</b>				
<b>Version:</b>	<b>Phase:</b>	PLAN	<b>Tie On Depth:</b>	0.0
<b>Vertical Section:</b>	<b>Depth From (TVD) (ft)</b>	<b>+N/-S (ft)</b>	<b>+E/-W (ft)</b>	<b>Direction (°)</b>
	0.0	0.0	0.0	78.60

<b>Plan Sections</b>										
Measured Depth (ft)	Inclination (°)	Azimuth (°)	Vertical Depth (ft)	+N/-S (ft)	+E/-W (ft)	Dogleg Rate (°/100ft)	Build Rate (°/100ft)	Turn Rate (°/100ft)	TFO (°)	Target
0.0	0.00	0.00	0.0	0.0	0.0	0.00	0.00	0.00	0.00	
500.0	0.00	0.00	500.0	0.0	0.0	0.00	0.00	0.00	0.00	
998.1	9.96	78.60	995.6	8.5	42.3	2.00	2.00	0.00	78.60	
8,185.3	9.96	78.60	8,074.4	254.3	1,261.2	0.00	0.00	0.00	0.00	
8,683.4	0.00	0.00	8,570.0	262.8	1,303.6	2.00	-2.00	0.00	180.00	F25 496 SGU 8507B-
12,343.4	0.00	0.00	12,230.0	262.8	1,303.6	0.00	0.00	0.00	0.00	F25 496 SGU 8507B-
13,593.4	0.00	0.00	13,480.0	262.8	1,303.6	0.00	0.00	0.00	0.00	
13,843.4	0.00	0.00	13,730.0	262.8	1,303.6	0.00	0.00	0.00	0.00	

# Cathedral Energy Services

## Planning Report

<b>Database:</b>	EDM 5000.1 US Multi Users DB	<b>Local Co-ordinate Reference:</b>	Well SGU 8507B-25
<b>Company:</b>	EnCana Oil & Gas (USA) Inc	<b>TVD Reference:</b>	KBE @ 8320.0ft (Original Well Elev)
<b>Project:</b>	Story Gulch	<b>MD Reference:</b>	KBE @ 8320.0ft (Original Well Elev)
<b>Site:</b>	F25 496	<b>North Reference:</b>	True
<b>Well:</b>	SGU 8507B-25	<b>Survey Calculation Method:</b>	Minimum Curvature
<b>Wellbore:</b>	DD		
<b>Design:</b>	Plan #1		

### Planned Survey

Measured Depth (ft)	Inclination (°)	Azimuth (°)	Vertical Depth (ft)	+N/-S (ft)	+E/-W (ft)	Vertical Section (ft)	Dogleg Rate (°/100ft)	Build Rate (°/100ft)	Comments / Formations
0.0	0.00	0.00	0.0	0.0	0.0	0.0	0.00	0.00	
100.0	0.00	0.00	100.0	0.0	0.0	0.0	0.00	0.00	
200.0	0.00	0.00	200.0	0.0	0.0	0.0	0.00	0.00	
300.0	0.00	0.00	300.0	0.0	0.0	0.0	0.00	0.00	
400.0	0.00	0.00	400.0	0.0	0.0	0.0	0.00	0.00	
500.0	0.00	0.00	500.0	0.0	0.0	0.0	0.00	0.00	KOP @ 500'
600.0	2.00	78.60	600.0	0.3	1.7	1.7	2.00	2.00	
700.0	4.00	78.60	699.8	1.4	6.8	7.0	2.00	2.00	
800.0	6.00	78.60	799.5	3.1	15.4	15.7	2.00	2.00	
900.0	8.00	78.60	898.7	5.5	27.3	27.9	2.00	2.00	
998.1	9.96	78.60	995.6	8.5	42.3	43.2	2.00	2.00	EOB; Inc=9.96°
1,000.0	9.96	78.60	997.5	8.6	42.7	43.5	0.00	0.00	
1,100.0	9.96	78.60	1,096.0	12.0	59.6	60.8	0.00	0.00	
1,200.0	9.96	78.60	1,194.4	15.4	76.6	78.1	0.00	0.00	
1,300.0	9.96	78.60	1,292.9	18.9	93.5	95.4	0.00	0.00	
1,400.0	9.96	78.60	1,391.4	22.3	110.5	112.7	0.00	0.00	
1,500.0	9.96	78.60	1,489.9	25.7	127.5	130.0	0.00	0.00	
1,540.7	9.96	78.60	1,530.0	27.1	134.4	137.1	0.00	0.00	Para Creek
1,600.0	9.96	78.60	1,588.4	29.1	144.4	147.3	0.00	0.00	
1,700.0	9.96	78.60	1,686.9	32.5	161.4	164.6	0.00	0.00	
1,800.0	9.96	78.60	1,785.4	36.0	178.3	181.9	0.00	0.00	
1,845.3	9.96	78.60	1,830.0	37.5	186.0	189.8	0.00	0.00	Mahog Bench
1,900.0	9.96	78.60	1,883.9	39.4	195.3	199.2	0.00	0.00	
1,906.2	9.96	78.60	1,890.0	39.6	196.3	200.3	0.00	0.00	Base B
2,000.0	9.96	78.60	1,982.4	42.8	212.3	216.5	0.00	0.00	
2,100.0	9.96	78.60	2,080.9	46.2	229.2	233.8	0.00	0.00	
2,200.0	9.96	78.60	2,179.4	49.6	246.2	251.1	0.00	0.00	
2,300.0	9.96	78.60	2,277.9	53.0	263.1	268.4	0.00	0.00	
2,400.0	9.96	78.60	2,376.4	56.5	280.1	285.7	0.00	0.00	
2,500.0	9.96	78.60	2,474.8	59.9	297.1	303.0	0.00	0.00	
2,600.0	9.96	78.60	2,573.3	63.3	314.0	320.3	0.00	0.00	
2,700.0	9.96	78.60	2,671.8	66.7	331.0	337.6	0.00	0.00	
2,800.0	9.96	78.60	2,770.3	70.1	347.9	354.9	0.00	0.00	
2,900.0	9.96	78.60	2,868.8	73.6	364.9	372.2	0.00	0.00	
3,000.0	9.96	78.60	2,967.3	77.0	381.9	389.5	0.00	0.00	
3,100.0	9.96	78.60	3,065.8	80.4	398.8	406.8	0.00	0.00	
3,200.0	9.96	78.60	3,164.3	83.8	415.8	424.1	0.00	0.00	
3,300.0	9.96	78.60	3,262.8	87.2	432.7	441.4	0.00	0.00	
3,400.0	9.96	78.60	3,361.3	90.7	449.7	458.7	0.00	0.00	
3,500.0	9.96	78.60	3,459.8	94.1	466.6	476.0	0.00	0.00	
3,600.0	9.96	78.60	3,558.3	97.5	483.6	493.3	0.00	0.00	
3,700.0	9.96	78.60	3,656.8	100.9	500.6	510.6	0.00	0.00	
3,800.0	9.96	78.60	3,755.2	104.3	517.5	527.9	0.00	0.00	
3,900.0	9.96	78.60	3,853.7	107.7	534.5	545.2	0.00	0.00	
4,000.0	9.96	78.60	3,952.2	111.2	551.4	562.5	0.00	0.00	
4,100.0	9.96	78.60	4,050.7	114.6	568.4	579.8	0.00	0.00	
4,200.0	9.96	78.60	4,149.2	118.0	585.4	597.1	0.00	0.00	
4,300.0	9.96	78.60	4,247.7	121.4	602.3	614.4	0.00	0.00	
4,400.0	9.96	78.60	4,346.2	124.8	619.3	631.7	0.00	0.00	
4,500.0	9.96	78.60	4,444.7	128.3	636.2	649.0	0.00	0.00	
4,600.0	9.96	78.60	4,543.2	131.7	653.2	666.3	0.00	0.00	
4,700.0	9.96	78.60	4,641.7	135.1	670.2	683.6	0.00	0.00	

# Cathedral Energy Services

## Planning Report

<b>Database:</b>	EDM 5000.1 US Multi Users DB	<b>Local Co-ordinate Reference:</b>	Well SGU 8507B-25
<b>Company:</b>	EnCana Oil & Gas (USA) Inc	<b>TVD Reference:</b>	KBE @ 8320.0ft (Original Well Elev)
<b>Project:</b>	Story Gulch	<b>MD Reference:</b>	KBE @ 8320.0ft (Original Well Elev)
<b>Site:</b>	F25 496	<b>North Reference:</b>	True
<b>Well:</b>	SGU 8507B-25	<b>Survey Calculation Method:</b>	Minimum Curvature
<b>Wellbore:</b>	DD		
<b>Design:</b>	Plan #1		

### Planned Survey

Measured Depth (ft)	Inclination (°)	Azimuth (°)	Vertical Depth (ft)	+N/-S (ft)	+E/-W (ft)	Vertical Section (ft)	Dogleg Rate (°/100ft)	Build Rate (°/100ft)	Comments / Formations
4,800.0	9.96	78.60	4,740.2	138.5	687.1	700.9	0.00	0.00	
4,900.0	9.96	78.60	4,838.7	141.9	704.1	718.2	0.00	0.00	
5,000.0	9.96	78.60	4,937.1	145.4	721.0	735.5	0.00	0.00	
5,100.0	9.96	78.60	5,035.6	148.8	738.0	752.8	0.00	0.00	
5,200.0	9.96	78.60	5,134.1	152.2	755.0	770.1	0.00	0.00	
5,300.0	9.96	78.60	5,232.6	155.6	771.9	787.4	0.00	0.00	
5,400.0	9.96	78.60	5,331.1	159.0	788.9	804.7	0.00	0.00	
5,500.0	9.96	78.60	5,429.6	162.4	805.8	822.0	0.00	0.00	
5,500.4	9.96	78.60	5,430.0	162.5	805.9	822.1	0.00	0.00	Was G
5,600.0	9.96	78.60	5,528.1	165.9	822.8	839.3	0.00	0.00	
5,700.0	9.96	78.60	5,626.6	169.3	839.8	856.6	0.00	0.00	
5,800.0	9.96	78.60	5,725.1	172.7	856.7	873.9	0.00	0.00	
5,900.0	9.96	78.60	5,823.6	176.1	873.7	891.2	0.00	0.00	
6,000.0	9.96	78.60	5,922.1	179.5	890.6	908.5	0.00	0.00	
6,100.0	9.96	78.60	6,020.6	183.0	907.6	925.8	0.00	0.00	
6,200.0	9.96	78.60	6,119.1	186.4	924.5	943.1	0.00	0.00	
6,300.0	9.96	78.60	6,217.5	189.8	941.5	960.4	0.00	0.00	
6,400.0	9.96	78.60	6,316.0	193.2	958.5	977.7	0.00	0.00	
6,500.0	9.96	78.60	6,414.5	196.6	975.4	995.0	0.00	0.00	
6,600.0	9.96	78.60	6,513.0	200.1	992.4	1,012.4	0.00	0.00	
6,700.0	9.96	78.60	6,611.5	203.5	1,009.3	1,029.7	0.00	0.00	
6,800.0	9.96	78.60	6,710.0	206.9	1,026.3	1,047.0	0.00	0.00	
6,900.0	9.96	78.60	6,808.5	210.3	1,043.3	1,064.3	0.00	0.00	
7,000.0	9.96	78.60	6,907.0	213.7	1,060.2	1,081.6	0.00	0.00	
7,100.0	9.96	78.60	7,005.5	217.2	1,077.2	1,098.9	0.00	0.00	
7,200.0	9.96	78.60	7,104.0	220.6	1,094.1	1,116.2	0.00	0.00	
7,300.0	9.96	78.60	7,202.5	224.0	1,111.1	1,133.5	0.00	0.00	
7,400.0	9.96	78.60	7,301.0	227.4	1,128.1	1,150.8	0.00	0.00	
7,500.0	9.96	78.60	7,399.5	230.8	1,145.0	1,168.1	0.00	0.00	
7,600.0	9.96	78.60	7,497.9	234.2	1,162.0	1,185.4	0.00	0.00	
7,700.0	9.96	78.60	7,596.4	237.7	1,178.9	1,202.7	0.00	0.00	
7,800.0	9.96	78.60	7,694.9	241.1	1,195.9	1,220.0	0.00	0.00	
7,900.0	9.96	78.60	7,793.4	244.5	1,212.9	1,237.3	0.00	0.00	
8,000.0	9.96	78.60	7,891.9	247.9	1,229.8	1,254.6	0.00	0.00	
8,100.0	9.96	78.60	7,990.4	251.3	1,246.8	1,271.9	0.00	0.00	
8,185.3	9.96	78.60	8,074.4	254.3	1,261.2	1,286.6	0.00	0.00	Start Drop -2.00
8,200.0	9.67	78.60	8,088.9	254.8	1,263.7	1,289.1	2.00	-2.00	
8,300.0	7.67	78.60	8,187.8	257.7	1,278.5	1,304.2	2.00	-2.00	
8,400.0	5.67	78.60	8,287.1	260.0	1,289.9	1,315.8	2.00	-2.00	
8,500.0	3.67	78.60	8,386.7	261.6	1,297.8	1,323.9	2.00	-2.00	
8,600.0	1.67	78.60	8,486.6	262.6	1,302.4	1,328.6	2.00	-2.00	
8,643.4	0.80	78.60	8,530.0	262.7	1,303.3	1,329.5	2.00	-2.00	WF
8,683.4	0.00	0.00	8,570.0	262.8	1,303.6	1,329.8	2.00	-2.00	EOD; Inc=0° - TOG - F25 496 SGU 8507B-25 T
8,700.0	0.00	0.00	8,586.6	262.8	1,303.6	1,329.8	0.00	0.00	
8,800.0	0.00	0.00	8,686.6	262.8	1,303.6	1,329.8	0.00	0.00	
8,900.0	0.00	0.00	8,786.6	262.8	1,303.6	1,329.8	0.00	0.00	
9,000.0	0.00	0.00	8,886.6	262.8	1,303.6	1,329.8	0.00	0.00	
9,100.0	0.00	0.00	8,986.6	262.8	1,303.6	1,329.8	0.00	0.00	
9,200.0	0.00	0.00	9,086.6	262.8	1,303.6	1,329.8	0.00	0.00	
9,300.0	0.00	0.00	9,186.6	262.8	1,303.6	1,329.8	0.00	0.00	
9,400.0	0.00	0.00	9,286.6	262.8	1,303.6	1,329.8	0.00	0.00	
9,500.0	0.00	0.00	9,386.6	262.8	1,303.6	1,329.8	0.00	0.00	

# Cathedral Energy Services

## Planning Report

<b>Database:</b>	EDM 5000.1 US Multi Users DB	<b>Local Co-ordinate Reference:</b>	Well SGU 8507B-25
<b>Company:</b>	EnCana Oil & Gas (USA) Inc	<b>TVD Reference:</b>	KBE @ 8320.0ft (Original Well Elev)
<b>Project:</b>	Story Gulch	<b>MD Reference:</b>	KBE @ 8320.0ft (Original Well Elev)
<b>Site:</b>	F25 496	<b>North Reference:</b>	True
<b>Well:</b>	SGU 8507B-25	<b>Survey Calculation Method:</b>	Minimum Curvature
<b>Wellbore:</b>	DD		
<b>Design:</b>	Plan #1		

Planned Survey									
Measured Depth (ft)	Inclination (°)	Azimuth (°)	Vertical Depth (ft)	+N/-S (ft)	+E/-W (ft)	Vertical Section (ft)	Dogleg Rate (°/100ft)	Build Rate (°/100ft)	Comments / Formations
9,600.0	0.00	0.00	9,486.6	262.8	1,303.6	1,329.8	0.00	0.00	
9,700.0	0.00	0.00	9,586.6	262.8	1,303.6	1,329.8	0.00	0.00	
9,800.0	0.00	0.00	9,686.6	262.8	1,303.6	1,329.8	0.00	0.00	
9,900.0	0.00	0.00	9,786.6	262.8	1,303.6	1,329.8	0.00	0.00	
10,000.0	0.00	0.00	9,886.6	262.8	1,303.6	1,329.8	0.00	0.00	
10,100.0	0.00	0.00	9,986.6	262.8	1,303.6	1,329.8	0.00	0.00	
10,200.0	0.00	0.00	10,086.6	262.8	1,303.6	1,329.8	0.00	0.00	
10,300.0	0.00	0.00	10,186.6	262.8	1,303.6	1,329.8	0.00	0.00	
10,400.0	0.00	0.00	10,286.6	262.8	1,303.6	1,329.8	0.00	0.00	
10,500.0	0.00	0.00	10,386.6	262.8	1,303.6	1,329.8	0.00	0.00	
10,600.0	0.00	0.00	10,486.6	262.8	1,303.6	1,329.8	0.00	0.00	
10,700.0	0.00	0.00	10,586.6	262.8	1,303.6	1,329.8	0.00	0.00	
10,800.0	0.00	0.00	10,686.6	262.8	1,303.6	1,329.8	0.00	0.00	
10,900.0	0.00	0.00	10,786.6	262.8	1,303.6	1,329.8	0.00	0.00	
11,000.0	0.00	0.00	10,886.6	262.8	1,303.6	1,329.8	0.00	0.00	
11,100.0	0.00	0.00	10,986.6	262.8	1,303.6	1,329.8	0.00	0.00	
11,200.0	0.00	0.00	11,086.6	262.8	1,303.6	1,329.8	0.00	0.00	
11,300.0	0.00	0.00	11,186.6	262.8	1,303.6	1,329.8	0.00	0.00	
11,400.0	0.00	0.00	11,286.6	262.8	1,303.6	1,329.8	0.00	0.00	
11,500.0	0.00	0.00	11,386.6	262.8	1,303.6	1,329.8	0.00	0.00	
11,600.0	0.00	0.00	11,486.6	262.8	1,303.6	1,329.8	0.00	0.00	
11,700.0	0.00	0.00	11,586.6	262.8	1,303.6	1,329.8	0.00	0.00	
11,800.0	0.00	0.00	11,686.6	262.8	1,303.6	1,329.8	0.00	0.00	
11,900.0	0.00	0.00	11,786.6	262.8	1,303.6	1,329.8	0.00	0.00	
12,000.0	0.00	0.00	11,886.6	262.8	1,303.6	1,329.8	0.00	0.00	
12,100.0	0.00	0.00	11,986.6	262.8	1,303.6	1,329.8	0.00	0.00	
12,200.0	0.00	0.00	12,086.6	262.8	1,303.6	1,329.8	0.00	0.00	
12,300.0	0.00	0.00	12,186.6	262.8	1,303.6	1,329.8	0.00	0.00	
12,343.4	0.00	0.00	12,230.0	262.8	1,303.6	1,329.8	0.00	0.00	Rollins - F25 496 SGU 8507B-25 BHL
12,400.0	0.00	0.00	12,286.6	262.8	1,303.6	1,329.8	0.00	0.00	
12,500.0	0.00	0.00	12,386.6	262.8	1,303.6	1,329.8	0.00	0.00	
12,600.0	0.00	0.00	12,486.6	262.8	1,303.6	1,329.8	0.00	0.00	
12,673.4	0.00	0.00	12,560.0	262.8	1,303.6	1,329.8	0.00	0.00	Cozzette
12,700.0	0.00	0.00	12,586.6	262.8	1,303.6	1,329.8	0.00	0.00	
12,800.0	0.00	0.00	12,686.6	262.8	1,303.6	1,329.8	0.00	0.00	
12,863.4	0.00	0.00	12,750.0	262.8	1,303.6	1,329.8	0.00	0.00	Corcoran
12,900.0	0.00	0.00	12,786.6	262.8	1,303.6	1,329.8	0.00	0.00	
13,000.0	0.00	0.00	12,886.6	262.8	1,303.6	1,329.8	0.00	0.00	
13,100.0	0.00	0.00	12,986.6	262.8	1,303.6	1,329.8	0.00	0.00	
13,143.4	0.00	0.00	13,030.0	262.8	1,303.6	1,329.8	0.00	0.00	Sego
13,200.0	0.00	0.00	13,086.6	262.8	1,303.6	1,329.8	0.00	0.00	
13,300.0	0.00	0.00	13,186.6	262.8	1,303.6	1,329.8	0.00	0.00	
13,343.4	0.00	0.00	13,230.0	262.8	1,303.6	1,329.8	0.00	0.00	Lower Sego
13,400.0	0.00	0.00	13,286.6	262.8	1,303.6	1,329.8	0.00	0.00	
13,500.0	0.00	0.00	13,386.6	262.8	1,303.6	1,329.8	0.00	0.00	
13,593.4	0.00	0.00	13,480.0	262.8	1,303.6	1,329.8	0.00	0.00	Drillers TD @ 13480' TVD
13,600.0	0.00	0.00	13,486.6	262.8	1,303.6	1,329.8	0.00	0.00	
13,700.0	0.00	0.00	13,586.6	262.8	1,303.6	1,329.8	0.00	0.00	
13,800.0	0.00	0.00	13,686.6	262.8	1,303.6	1,329.8	0.00	0.00	
13,843.4	0.00	0.00	13,730.0	262.8	1,303.6	1,329.8	0.00	0.00	

# Cathedral Energy Services

## Planning Report

<b>Database:</b>	EDM 5000.1 US Multi Users DB	<b>Local Co-ordinate Reference:</b>	Well SGU 8507B-25
<b>Company:</b>	EnCana Oil & Gas (USA) Inc	<b>TVD Reference:</b>	KBE @ 8320.0ft (Original Well Elev)
<b>Project:</b>	Story Gulch	<b>MD Reference:</b>	KBE @ 8320.0ft (Original Well Elev)
<b>Site:</b>	F25 496	<b>North Reference:</b>	True
<b>Well:</b>	SGU 8507B-25	<b>Survey Calculation Method:</b>	Minimum Curvature
<b>Wellbore:</b>	DD		
<b>Design:</b>	Plan #1		

Targets									
Target Name									
- hit/miss target	Dip Angle	Dip Dir.	TVD	+N/-S	+E/-W	Northing	Easting	Latitude	Longitude
- Shape	(°)	(°)	(ft)	(ft)	(ft)	(ft)	(ft)		
F25 496 SGU 8507B-25	0.00	0.00	12,230.0	262.8	1,303.6	1,681,395.99	2,264,091.24	39° 40' 30.53 N	108° 6' 53.22 W
- plan hits target center									
- Rectangle (sides W30.0 H50.0 D0.0)									
F25 496 SGU 8507B-25	0.00	0.00	8,570.0	262.8	1,303.6	1,681,395.99	2,264,091.24	39° 40' 30.53 N	108° 6' 53.22 W
- plan hits target center									
- Point									

Formations						
Measured Depth (ft)	Vertical Depth (ft)	Name	Lithology	Dip (°)	Dip Direction (°)	
1,540.7	1,530.0	Para Creek		0.00		
1,845.3	1,830.0	Mahog Bench		0.00		
1,906.2	1,890.0	Base B		0.00		
5,500.4	5,430.0	Was G		0.00		
8,643.4	8,530.0	WF		0.00		
8,683.4	8,570.0	TOG		0.00		
12,343.4	12,230.0	Rollins		0.00		
12,673.4	12,560.0	Cozzette		0.00		
12,863.4	12,750.0	Corcoran		0.00		
13,143.4	13,030.0	Sego		0.00		
13,343.4	13,230.0	Lower Sego		0.00		

Plan Annotations				
Measured Depth (ft)	Vertical Depth (ft)	Local Coordinates		Comment
		+N/-S (ft)	+E/-W (ft)	
500.0	500.0	0.0	0.0	KOP @ 500'
998.1	995.6	8.5	42.3	EOB; Inc=9.96°
8,185.3	8,074.4	254.3	1,261.2	Start Drop -2.00
8,683.4	8,570.0	262.8	1,303.6	EOD; Inc=0°
13,593.4	13,480.0	262.8	1,303.6	Drillers TD @ 13480' TVD
13,843.4	13,730.0	262.8	1,303.6	Permit TD @ 13730' TVD