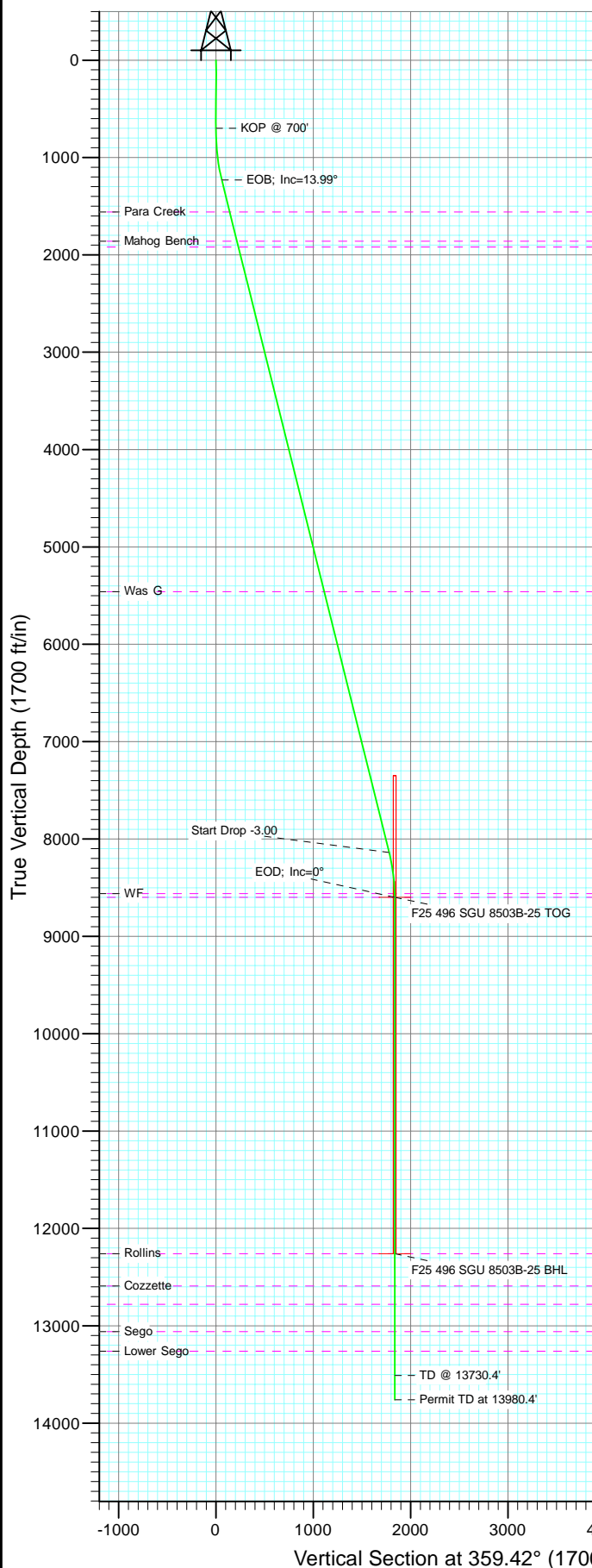


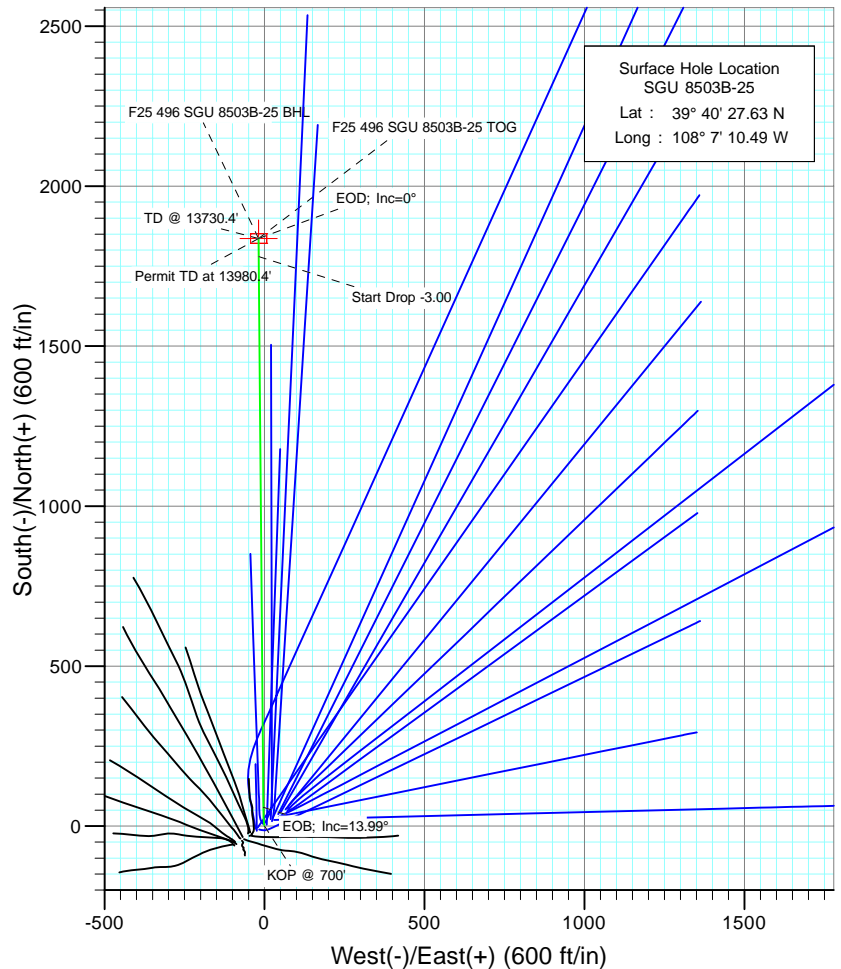


Project: Story Gulch  
Site: F25 496  
Well: SGU 8503B-25  
Wellbore: DD  
Design: Plan #1

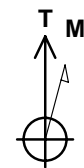


#### SECTION DETAILS

Sec	MD	Inc	Azi	TVD	+N/-S	+E/-W	Dlag	TFace	VSeet	Target
1	0.0	0.00	0.00	0.0	0.0	0.0	0.00	0.00	0.0	
2	700.0	0.00	0.00	700.0	0.0	0.0	0.00	0.00	0.0	
3	900.0	0.00	350.00	899.8	6.9	-1.2	2.00	350.00	6.9	
4	1235.4	13.99	359.52	1230.7	59.1	-3.6	3.00	13.23	59.1	
5	8354.1	13.99	359.52	8138.4	1779.5	-18.0	0.00	0.00	1779.6	
6	8820.4	0.00	0.00	8600.0	1836.1	-18.4	3.00	180.00	1836.2	F25 496 SGU 8503B-25 TOG
7	12480.4	0.00	0.00	12260.0	1836.1	-18.4	0.00	0.00	1836.2	F25 496 SGU 8503B-25 BHL
8	13730.4	0.00	0.00	13510.0	1836.1	-18.4	0.00	0.00	1836.2	
9	13980.4	0.00	0.00	13760.0	1836.1	-18.4	0.00	0.00	1836.2	



Bottom Hole Location  
SGU 8503B-25  
Lat : 39 40 45.78 N  
Long. : 108 7 10.73 W



Azimuths to True North  
Magnetic North: 10.57°

Magnetic Field  
Strength: 52465.3nT  
Dip Angle: 65.91°  
Date: 3/23/2010  
Model: IGRF200510

#### FORMATION TOP DETAILS

TVDPath	MDPath	Formation
1560.0	1574.8	Para Creek
1860.0	1883.9	Mahog Bench
1920.0	1945.8	Base B
5460.0	5593.9	Was G
8560.0	8780.3	WF
8600.0	8820.4	TOG
12260.0	12480.4	Rollins
12590.0	12810.4	Cozzette
12780.0	13000.4	Corcoran
13060.0	13280.4	Sego
13260.0	13480.4	Lower Sego

#### DESIGN DETAILS: Plan #1

105XXX; BH  
KBE @ 8320.0ft (Original Well Elev)

Target	Azimuth	Origin	N/S	E/W	From TVD
F25 496 SGU 8503B-25 BHL	359.42	Slot	0.0	0.0	0.0

# Cathedral Energy Services

## Planning Report

<b>Database:</b>	EDM 5000.1 US Multi Users DB	<b>Local Co-ordinate Reference:</b>	Well SGU 8503B-25
<b>Company:</b>	EnCana Oil & Gas (USA) Inc	<b>TVD Reference:</b>	KBE @ 8320.0ft (Original Well Elev)
<b>Project:</b>	Story Gulch	<b>MD Reference:</b>	KBE @ 8320.0ft (Original Well Elev)
<b>Site:</b>	F25 496	<b>North Reference:</b>	True
<b>Well:</b>	SGU 8503B-25	<b>Survey Calculation Method:</b>	Minimum Curvature
<b>Wellbore:</b>	DD		
<b>Design:</b>	Plan #1		

<b>Project</b>	Story Gulch		
<b>Map System:</b>	US State Plane 1983	<b>System Datum:</b>	Mean Sea Level
<b>Geo Datum:</b>	North American Datum 1983		
<b>Map Zone:</b>	Colorado Central Zone		

<b>Site</b>	F25 496			
<b>Site Position:</b>		<b>Northing:</b>	1,681,091.06 ft	<b>Latitude:</b> 39° 40' 27.10 N
<b>From:</b>	Lat/Long	<b>Easting:</b>	2,262,632.54 ft	<b>Longitude:</b> 108° 7' 11.76 W
<b>Position Uncertainty:</b>	0.0 ft	<b>Slot Radius:</b>	13.200 in	<b>Grid Convergence:</b> -1.65 °

<b>Well</b>	SGU 8503B-25			
<b>Well Position</b>	<b>+N/-S</b>	0.0 ft	<b>Northing:</b>	1,681,141.94 ft
	<b>+E/-W</b>	0.0 ft	<b>Easting:</b>	2,262,732.70 ft
<b>Position Uncertainty</b>	0.0 ft	<b>Wellhead Elevation:</b>	ft	<b>Ground Level:</b> 8,298.0 ft

<b>Wellbore</b>	DD				
<b>Magnetics</b>	<b>Model Name</b>	<b>Sample Date</b>	<b>Declination (°)</b>	<b>Dip Angle (°)</b>	<b>Field Strength (nT)</b>
	IGRF200510	3/23/2010	10.57	65.91	52,465

<b>Design</b>	Plan #1			
<b>Audit Notes:</b>				
<b>Version:</b>	<b>Phase:</b>	PLAN	<b>Tie On Depth:</b>	0.0
<b>Vertical Section:</b>	<b>Depth From (TVD) (ft)</b>	<b>+N/-S (ft)</b>	<b>+E/-W (ft)</b>	<b>Direction (°)</b>
	0.0	0.0	0.0	359.42

<b>Plan Sections</b>										
Measured Depth (ft)	Inclination (°)	Azimuth (°)	Vertical Depth (ft)	+N/-S (ft)	+E/-W (ft)	Dogleg Rate (°/100ft)	Build Rate (°/100ft)	Turn Rate (°/100ft)	TFO (°)	Target
0.0	0.00	0.00	0.0	0.0	0.0	0.00	0.00	0.00	0.00	
700.0	0.00	0.00	700.0	0.0	0.0	0.00	0.00	0.00	0.00	
900.0	4.00	350.00	899.8	6.9	-1.2	2.00	2.00	0.00	350.00	
1,235.4	13.99	359.52	1,230.7	59.1	-3.6	3.00	2.98	2.84	13.23	
8,354.1	13.99	359.52	8,138.4	1,779.5	-18.0	0.00	0.00	0.00	0.00	
8,820.4	0.00	0.00	8,600.0	1,836.1	-18.4	3.00	-3.00	0.00	180.00	F25 496 SGU 8503B-
12,480.4	0.00	0.00	12,260.0	1,836.1	-18.4	0.00	0.00	0.00	0.00	F25 496 SGU 8503B-
13,730.4	0.00	0.00	13,510.0	1,836.1	-18.4	0.00	0.00	0.00	0.00	
13,980.4	0.00	0.00	13,760.0	1,836.1	-18.4	0.00	0.00	0.00	0.00	

# Cathedral Energy Services

## Planning Report

<b>Database:</b>	EDM 5000.1 US Multi Users DB	<b>Local Co-ordinate Reference:</b>	Well SGU 8503B-25
<b>Company:</b>	EnCana Oil & Gas (USA) Inc	<b>TVD Reference:</b>	KBE @ 8320.0ft (Original Well Elev)
<b>Project:</b>	Story Gulch	<b>MD Reference:</b>	KBE @ 8320.0ft (Original Well Elev)
<b>Site:</b>	F25 496	<b>North Reference:</b>	True
<b>Well:</b>	SGU 8503B-25	<b>Survey Calculation Method:</b>	Minimum Curvature
<b>Wellbore:</b>	DD		
<b>Design:</b>	Plan #1		

### Planned Survey

Measured Depth (ft)	Inclination (°)	Azimuth (°)	Vertical Depth (ft)	+N/-S (ft)	+E/-W (ft)	Vertical Section (ft)	Dogleg Rate (°/100ft)	Build Rate (°/100ft)	Comments / Formations
0.0	0.00	0.00	0.0	0.0	0.0	0.0	0.00	0.00	
100.0	0.00	0.00	100.0	0.0	0.0	0.0	0.00	0.00	
200.0	0.00	0.00	200.0	0.0	0.0	0.0	0.00	0.00	
300.0	0.00	0.00	300.0	0.0	0.0	0.0	0.00	0.00	
400.0	0.00	0.00	400.0	0.0	0.0	0.0	0.00	0.00	
500.0	0.00	0.00	500.0	0.0	0.0	0.0	0.00	0.00	
600.0	0.00	0.00	600.0	0.0	0.0	0.0	0.00	0.00	
700.0	0.00	0.00	700.0	0.0	0.0	0.0	0.00	0.00	KOP @ 700'
800.0	2.00	350.00	800.0	1.7	-0.3	1.7	2.00	2.00	
900.0	4.00	350.00	899.8	6.9	-1.2	6.9	2.00	2.00	
1,000.0	6.95	355.68	999.4	16.3	-2.3	16.4	3.00	2.95	
1,100.0	9.94	357.97	1,098.3	31.0	-3.0	31.0	3.00	2.98	
1,200.0	12.93	359.21	1,196.3	50.8	-3.5	50.9	3.00	2.99	
1,235.4	13.99	359.52	1,230.7	59.1	-3.6	59.1	3.00	2.99	EOB; Inc=13.99°
1,300.0	13.99	359.52	1,293.4	74.7	-3.7	74.7	0.00	0.00	
1,400.0	13.99	359.52	1,390.4	98.8	-3.9	98.9	0.00	0.00	
1,500.0	13.99	359.52	1,487.5	123.0	-4.1	123.0	0.00	0.00	
1,574.8	13.99	359.52	1,560.0	141.1	-4.3	141.1	0.00	0.00	Para Creek
1,600.0	13.99	359.52	1,584.5	147.2	-4.3	147.2	0.00	0.00	
1,700.0	13.99	359.52	1,681.5	171.3	-4.5	171.4	0.00	0.00	
1,800.0	13.99	359.52	1,778.6	195.5	-4.7	195.5	0.00	0.00	
1,883.9	13.99	359.52	1,860.0	215.8	-4.9	215.8	0.00	0.00	Mahog Bench
1,900.0	13.99	359.52	1,875.6	219.7	-4.9	219.7	0.00	0.00	
1,945.8	13.99	359.52	1,920.0	230.7	-5.0	230.8	0.00	0.00	Base B
2,000.0	13.99	359.52	1,972.6	243.8	-5.1	243.9	0.00	0.00	
2,100.0	13.99	359.52	2,069.7	268.0	-5.3	268.1	0.00	0.00	
2,200.0	13.99	359.52	2,166.7	292.2	-5.5	292.2	0.00	0.00	
2,300.0	13.99	359.52	2,263.7	316.3	-5.7	316.4	0.00	0.00	
2,400.0	13.99	359.52	2,360.8	340.5	-5.9	340.6	0.00	0.00	
2,500.0	13.99	359.52	2,457.8	364.7	-6.1	364.7	0.00	0.00	
2,600.0	13.99	359.52	2,554.9	388.9	-6.3	388.9	0.00	0.00	
2,700.0	13.99	359.52	2,651.9	413.0	-6.5	413.1	0.00	0.00	
2,800.0	13.99	359.52	2,748.9	437.2	-6.8	437.2	0.00	0.00	
2,900.0	13.99	359.52	2,846.0	461.4	-7.0	461.4	0.00	0.00	
3,000.0	13.99	359.52	2,943.0	485.5	-7.2	485.6	0.00	0.00	
3,100.0	13.99	359.52	3,040.0	509.7	-7.4	509.7	0.00	0.00	
3,200.0	13.99	359.52	3,137.1	533.9	-7.6	533.9	0.00	0.00	
3,300.0	13.99	359.52	3,234.1	558.0	-7.8	558.1	0.00	0.00	
3,400.0	13.99	359.52	3,331.1	582.2	-8.0	582.2	0.00	0.00	
3,500.0	13.99	359.52	3,428.2	606.4	-8.2	606.4	0.00	0.00	
3,600.0	13.99	359.52	3,525.2	630.5	-8.4	630.6	0.00	0.00	
3,700.0	13.99	359.52	3,622.2	654.7	-8.6	654.8	0.00	0.00	
3,800.0	13.99	359.52	3,719.3	678.9	-8.8	678.9	0.00	0.00	
3,900.0	13.99	359.52	3,816.3	703.0	-9.0	703.1	0.00	0.00	
4,000.0	13.99	359.52	3,913.3	727.2	-9.2	727.3	0.00	0.00	
4,100.0	13.99	359.52	4,010.4	751.4	-9.4	751.4	0.00	0.00	
4,200.0	13.99	359.52	4,107.4	775.5	-9.6	775.6	0.00	0.00	
4,300.0	13.99	359.52	4,204.5	799.7	-9.8	799.8	0.00	0.00	
4,400.0	13.99	359.52	4,301.5	823.9	-10.0	823.9	0.00	0.00	
4,500.0	13.99	359.52	4,398.5	848.0	-10.2	848.1	0.00	0.00	
4,600.0	13.99	359.52	4,495.6	872.2	-10.4	872.3	0.00	0.00	
4,700.0	13.99	359.52	4,592.6	896.4	-10.6	896.4	0.00	0.00	

# Cathedral Energy Services

## Planning Report

<b>Database:</b>	EDM 5000.1 US Multi Users DB	<b>Local Co-ordinate Reference:</b>	Well SGU 8503B-25
<b>Company:</b>	EnCana Oil & Gas (USA) Inc	<b>TVD Reference:</b>	KBE @ 8320.0ft (Original Well Elev)
<b>Project:</b>	Story Gulch	<b>MD Reference:</b>	KBE @ 8320.0ft (Original Well Elev)
<b>Site:</b>	F25 496	<b>North Reference:</b>	True
<b>Well:</b>	SGU 8503B-25	<b>Survey Calculation Method:</b>	Minimum Curvature
<b>Wellbore:</b>	DD		
<b>Design:</b>	Plan #1		

### Planned Survey

Measured Depth (ft)	Inclination (°)	Azimuth (°)	Vertical Depth (ft)	+N/-S (ft)	+E/-W (ft)	Vertical Section (ft)	Dogleg Rate (°/100ft)	Build Rate (°/100ft)	Comments / Formations
4,800.0	13.99	359.52	4,689.6	920.5	-10.8	920.6	0.00	0.00	
4,900.0	13.99	359.52	4,786.7	944.7	-11.0	944.8	0.00	0.00	
5,000.0	13.99	359.52	4,883.7	968.9	-11.2	968.9	0.00	0.00	
5,100.0	13.99	359.52	4,980.7	993.1	-11.4	993.1	0.00	0.00	
5,200.0	13.99	359.52	5,077.8	1,017.2	-11.6	1,017.3	0.00	0.00	
5,300.0	13.99	359.52	5,174.8	1,041.4	-11.8	1,041.5	0.00	0.00	
5,400.0	13.99	359.52	5,271.8	1,065.6	-12.0	1,065.6	0.00	0.00	
5,500.0	13.99	359.52	5,368.9	1,089.7	-12.2	1,089.8	0.00	0.00	
5,593.9	13.99	359.52	5,460.0	1,112.4	-12.4	1,112.5	0.00	0.00	Was G
5,600.0	13.99	359.52	5,465.9	1,113.9	-12.4	1,114.0	0.00	0.00	
5,700.0	13.99	359.52	5,562.9	1,138.1	-12.6	1,138.1	0.00	0.00	
5,800.0	13.99	359.52	5,660.0	1,162.2	-12.8	1,162.3	0.00	0.00	
5,900.0	13.99	359.52	5,757.0	1,186.4	-13.0	1,186.5	0.00	0.00	
6,000.0	13.99	359.52	5,854.1	1,210.6	-13.2	1,210.6	0.00	0.00	
6,100.0	13.99	359.52	5,951.1	1,234.7	-13.4	1,234.8	0.00	0.00	
6,200.0	13.99	359.52	6,048.1	1,258.9	-13.6	1,259.0	0.00	0.00	
6,300.0	13.99	359.52	6,145.2	1,283.1	-13.8	1,283.1	0.00	0.00	
6,400.0	13.99	359.52	6,242.2	1,307.2	-14.0	1,307.3	0.00	0.00	
6,500.0	13.99	359.52	6,339.2	1,331.4	-14.2	1,331.5	0.00	0.00	
6,600.0	13.99	359.52	6,436.3	1,355.6	-14.4	1,355.7	0.00	0.00	
6,700.0	13.99	359.52	6,533.3	1,379.7	-14.6	1,379.8	0.00	0.00	
6,800.0	13.99	359.52	6,630.3	1,403.9	-14.8	1,404.0	0.00	0.00	
6,900.0	13.99	359.52	6,727.4	1,428.1	-15.0	1,428.2	0.00	0.00	
7,000.0	13.99	359.52	6,824.4	1,452.2	-15.2	1,452.3	0.00	0.00	
7,100.0	13.99	359.52	6,921.4	1,476.4	-15.4	1,476.5	0.00	0.00	
7,200.0	13.99	359.52	7,018.5	1,500.6	-15.6	1,500.7	0.00	0.00	
7,300.0	13.99	359.52	7,115.5	1,524.8	-15.8	1,524.8	0.00	0.00	
7,400.0	13.99	359.52	7,212.6	1,548.9	-16.0	1,549.0	0.00	0.00	
7,500.0	13.99	359.52	7,309.6	1,573.1	-16.2	1,573.2	0.00	0.00	
7,600.0	13.99	359.52	7,406.6	1,597.3	-16.5	1,597.3	0.00	0.00	
7,700.0	13.99	359.52	7,503.7	1,621.4	-16.7	1,621.5	0.00	0.00	
7,800.0	13.99	359.52	7,600.7	1,645.6	-16.9	1,645.7	0.00	0.00	
7,900.0	13.99	359.52	7,697.7	1,669.8	-17.1	1,669.8	0.00	0.00	
8,000.0	13.99	359.52	7,794.8	1,693.9	-17.3	1,694.0	0.00	0.00	
8,100.0	13.99	359.52	7,891.8	1,718.1	-17.5	1,718.2	0.00	0.00	
8,200.0	13.99	359.52	7,988.8	1,742.3	-17.7	1,742.4	0.00	0.00	
8,300.0	13.99	359.52	8,085.9	1,766.4	-17.9	1,766.5	0.00	0.00	
8,354.1	13.99	359.52	8,138.4	1,779.5	-18.0	1,779.6	0.00	0.00	Start Drop -3.00
8,400.0	12.61	359.52	8,183.0	1,790.1	-18.1	1,790.2	3.00	-3.00	
8,500.0	9.61	359.52	8,281.1	1,809.3	-18.2	1,809.4	3.00	-3.00	
8,600.0	6.61	359.52	8,380.1	1,823.4	-18.3	1,823.5	3.00	-3.00	
8,700.0	3.61	359.52	8,479.7	1,832.3	-18.4	1,832.4	3.00	-3.00	
8,780.3	1.20	359.52	8,560.0	1,835.7	-18.4	1,835.8	3.00	-3.00	WF
8,800.0	0.61	359.52	8,579.6	1,836.0	-18.4	1,836.1	3.00	-3.00	
8,820.4	0.00	0.00	8,600.0	1,836.1	-18.4	1,836.2	3.00	-3.00	EOD; Inc=0° - TOG - F25 496 SGU 8503B-25 T
8,900.0	0.00	0.00	8,679.6	1,836.1	-18.4	1,836.2	0.00	0.00	
9,000.0	0.00	0.00	8,779.6	1,836.1	-18.4	1,836.2	0.00	0.00	
9,100.0	0.00	0.00	8,879.6	1,836.1	-18.4	1,836.2	0.00	0.00	
9,200.0	0.00	0.00	8,979.6	1,836.1	-18.4	1,836.2	0.00	0.00	
9,300.0	0.00	0.00	9,079.6	1,836.1	-18.4	1,836.2	0.00	0.00	
9,400.0	0.00	0.00	9,179.6	1,836.1	-18.4	1,836.2	0.00	0.00	
9,500.0	0.00	0.00	9,279.6	1,836.1	-18.4	1,836.2	0.00	0.00	

# Cathedral Energy Services

## Planning Report

<b>Database:</b>	EDM 5000.1 US Multi Users DB	<b>Local Co-ordinate Reference:</b>	Well SGU 8503B-25
<b>Company:</b>	EnCana Oil & Gas (USA) Inc	<b>TVD Reference:</b>	KBE @ 8320.0ft (Original Well Elev)
<b>Project:</b>	Story Gulch	<b>MD Reference:</b>	KBE @ 8320.0ft (Original Well Elev)
<b>Site:</b>	F25 496	<b>North Reference:</b>	True
<b>Well:</b>	SGU 8503B-25	<b>Survey Calculation Method:</b>	Minimum Curvature
<b>Wellbore:</b>	DD		
<b>Design:</b>	Plan #1		

Planned Survey									
Measured Depth (ft)	Inclination (°)	Azimuth (°)	Vertical Depth (ft)	+N/-S (ft)	+E/-W (ft)	Vertical Section (ft)	Dogleg Rate (°/100ft)	Build Rate (°/100ft)	Comments / Formations
9,600.0	0.00	0.00	9,379.6	1,836.1	-18.4	1,836.2	0.00	0.00	
9,700.0	0.00	0.00	9,479.6	1,836.1	-18.4	1,836.2	0.00	0.00	
9,800.0	0.00	0.00	9,579.6	1,836.1	-18.4	1,836.2	0.00	0.00	
9,900.0	0.00	0.00	9,679.6	1,836.1	-18.4	1,836.2	0.00	0.00	
10,000.0	0.00	0.00	9,779.6	1,836.1	-18.4	1,836.2	0.00	0.00	
10,100.0	0.00	0.00	9,879.6	1,836.1	-18.4	1,836.2	0.00	0.00	
10,200.0	0.00	0.00	9,979.6	1,836.1	-18.4	1,836.2	0.00	0.00	
10,300.0	0.00	0.00	10,079.6	1,836.1	-18.4	1,836.2	0.00	0.00	
10,400.0	0.00	0.00	10,179.6	1,836.1	-18.4	1,836.2	0.00	0.00	
10,500.0	0.00	0.00	10,279.6	1,836.1	-18.4	1,836.2	0.00	0.00	
10,600.0	0.00	0.00	10,379.6	1,836.1	-18.4	1,836.2	0.00	0.00	
10,700.0	0.00	0.00	10,479.6	1,836.1	-18.4	1,836.2	0.00	0.00	
10,800.0	0.00	0.00	10,579.6	1,836.1	-18.4	1,836.2	0.00	0.00	
10,900.0	0.00	0.00	10,679.6	1,836.1	-18.4	1,836.2	0.00	0.00	
11,000.0	0.00	0.00	10,779.6	1,836.1	-18.4	1,836.2	0.00	0.00	
11,100.0	0.00	0.00	10,879.6	1,836.1	-18.4	1,836.2	0.00	0.00	
11,200.0	0.00	0.00	10,979.6	1,836.1	-18.4	1,836.2	0.00	0.00	
11,300.0	0.00	0.00	11,079.6	1,836.1	-18.4	1,836.2	0.00	0.00	
11,400.0	0.00	0.00	11,179.6	1,836.1	-18.4	1,836.2	0.00	0.00	
11,500.0	0.00	0.00	11,279.6	1,836.1	-18.4	1,836.2	0.00	0.00	
11,600.0	0.00	0.00	11,379.6	1,836.1	-18.4	1,836.2	0.00	0.00	
11,700.0	0.00	0.00	11,479.6	1,836.1	-18.4	1,836.2	0.00	0.00	
11,800.0	0.00	0.00	11,579.6	1,836.1	-18.4	1,836.2	0.00	0.00	
11,900.0	0.00	0.00	11,679.6	1,836.1	-18.4	1,836.2	0.00	0.00	
12,000.0	0.00	0.00	11,779.6	1,836.1	-18.4	1,836.2	0.00	0.00	
12,100.0	0.00	0.00	11,879.6	1,836.1	-18.4	1,836.2	0.00	0.00	
12,200.0	0.00	0.00	11,979.6	1,836.1	-18.4	1,836.2	0.00	0.00	
12,300.0	0.00	0.00	12,079.6	1,836.1	-18.4	1,836.2	0.00	0.00	
12,400.0	0.00	0.00	12,179.6	1,836.1	-18.4	1,836.2	0.00	0.00	
12,480.4	0.00	0.00	12,260.0	1,836.1	-18.4	1,836.2	0.00	0.00	Rollins - F25 496 SGU 8503B-25 BHL
12,500.0	0.00	0.00	12,279.6	1,836.1	-18.4	1,836.2	0.00	0.00	
12,600.0	0.00	0.00	12,379.6	1,836.1	-18.4	1,836.2	0.00	0.00	
12,700.0	0.00	0.00	12,479.6	1,836.1	-18.4	1,836.2	0.00	0.00	
12,800.0	0.00	0.00	12,579.6	1,836.1	-18.4	1,836.2	0.00	0.00	
12,810.4	0.00	0.00	12,590.0	1,836.1	-18.4	1,836.2	0.00	0.00	Cozzette
12,900.0	0.00	0.00	12,679.6	1,836.1	-18.4	1,836.2	0.00	0.00	
13,000.0	0.00	0.00	12,779.6	1,836.1	-18.4	1,836.2	0.00	0.00	
13,000.4	0.00	0.00	12,780.0	1,836.1	-18.4	1,836.2	0.00	0.00	Corcoran
13,100.0	0.00	0.00	12,879.6	1,836.1	-18.4	1,836.2	0.00	0.00	
13,200.0	0.00	0.00	12,979.6	1,836.1	-18.4	1,836.2	0.00	0.00	
13,280.4	0.00	0.00	13,060.0	1,836.1	-18.4	1,836.2	0.00	0.00	Sego
13,300.0	0.00	0.00	13,079.6	1,836.1	-18.4	1,836.2	0.00	0.00	
13,400.0	0.00	0.00	13,179.6	1,836.1	-18.4	1,836.2	0.00	0.00	
13,480.4	0.00	0.00	13,260.0	1,836.1	-18.4	1,836.2	0.00	0.00	Lower Sego
13,500.0	0.00	0.00	13,279.6	1,836.1	-18.4	1,836.2	0.00	0.00	
13,600.0	0.00	0.00	13,379.6	1,836.1	-18.4	1,836.2	0.00	0.00	
13,700.0	0.00	0.00	13,479.6	1,836.1	-18.4	1,836.2	0.00	0.00	
13,730.4	0.00	0.00	13,510.0	1,836.1	-18.4	1,836.2	0.00	0.00	TD @ 13730.4'
13,800.0	0.00	0.00	13,579.6	1,836.1	-18.4	1,836.2	0.00	0.00	
13,900.0	0.00	0.00	13,679.6	1,836.1	-18.4	1,836.2	0.00	0.00	
13,980.4	0.00	0.00	13,760.0	1,836.1	-18.4	1,836.2	0.00	0.00	

# Cathedral Energy Services

## Planning Report

<b>Database:</b>	EDM 5000.1 US Multi Users DB	<b>Local Co-ordinate Reference:</b>	Well SGU 8503B-25
<b>Company:</b>	EnCana Oil & Gas (USA) Inc	<b>TVD Reference:</b>	KBE @ 8320.0ft (Original Well Elev)
<b>Project:</b>	Story Gulch	<b>MD Reference:</b>	KBE @ 8320.0ft (Original Well Elev)
<b>Site:</b>	F25 496	<b>North Reference:</b>	True
<b>Well:</b>	SGU 8503B-25	<b>Survey Calculation Method:</b>	Minimum Curvature
<b>Wellbore:</b>	DD		
<b>Design:</b>	Plan #1		

Targets									
Target Name									
- hit/miss target	Dip Angle	Dip Dir.	TVD	+N/-S	+E/-W	Northing	Easting	Latitude	Longitude
- Shape	(°)	(°)	(ft)	(ft)	(ft)	(ft)	(ft)		
F25 496 SGU 8503B-25	0.00	0.00	8,600.0	1,836.1	-18.4	1,682,977.84	2,262,767.20	39° 40' 45.78 N	108° 7' 10.73 W
- plan hits target center									
- Point									
F25 496 SGU 8503B-25	0.00	0.00	12,260.0	1,836.1	-18.4	1,682,977.84	2,262,767.20	39° 40' 45.78 N	108° 7' 10.73 W
- plan hits target center									
- Rectangle (sides W30.0 H50.0 D0.0)									

Formations						
Measured Depth	Vertical Depth	Name	Lithology	Dip	Dip Direction	
(ft)	(ft)			(°)	(°)	
1,574.8	1,560.0	Para Creek		0.00		
1,883.9	1,860.0	Mahog Bench		0.00		
1,945.8	1,920.0	Base B		0.00		
5,593.9	5,460.0	Was G		0.00		
8,780.3	8,560.0	WF		0.00		
8,820.4	8,600.0	TOG		0.00		
12,480.4	12,260.0	Rollins		0.00		
12,810.4	12,590.0	Cozzette		0.00		
13,000.4	12,780.0	Corcoran		0.00		
13,280.4	13,060.0	Sego		0.00		
13,480.4	13,260.0	Lower Sego		0.00		

Plan Annotations				
Measured Depth	Vertical Depth	Local Coordinates		Comment
(ft)	(ft)	+N/-S (ft)	+E/-W (ft)	
700.0	700.0	0.0	0.0	KOP @ 700'
1,235.4	1,230.7	6.9	-1.2	EOB; Inc=13.99°
8,354.1	8,138.4	59.1	-3.6	Start Drop -3.00
8,820.4	8,600.0	1,779.5	-18.0	EOD; Inc=0°
13,730.4	13,510.0	1,836.1	-18.4	TD @ 13730.4'
13,980.4	13,760.0	1,836.1	-18.4	Permit TD at 13980.4'