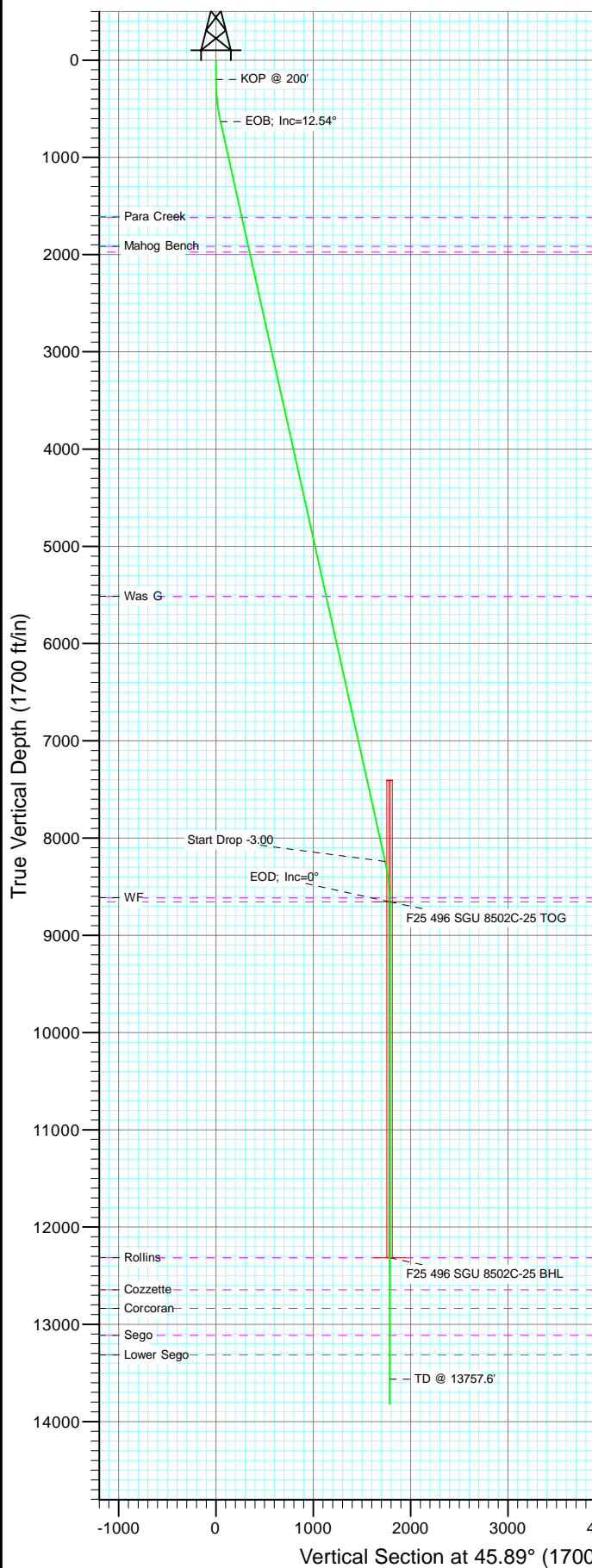
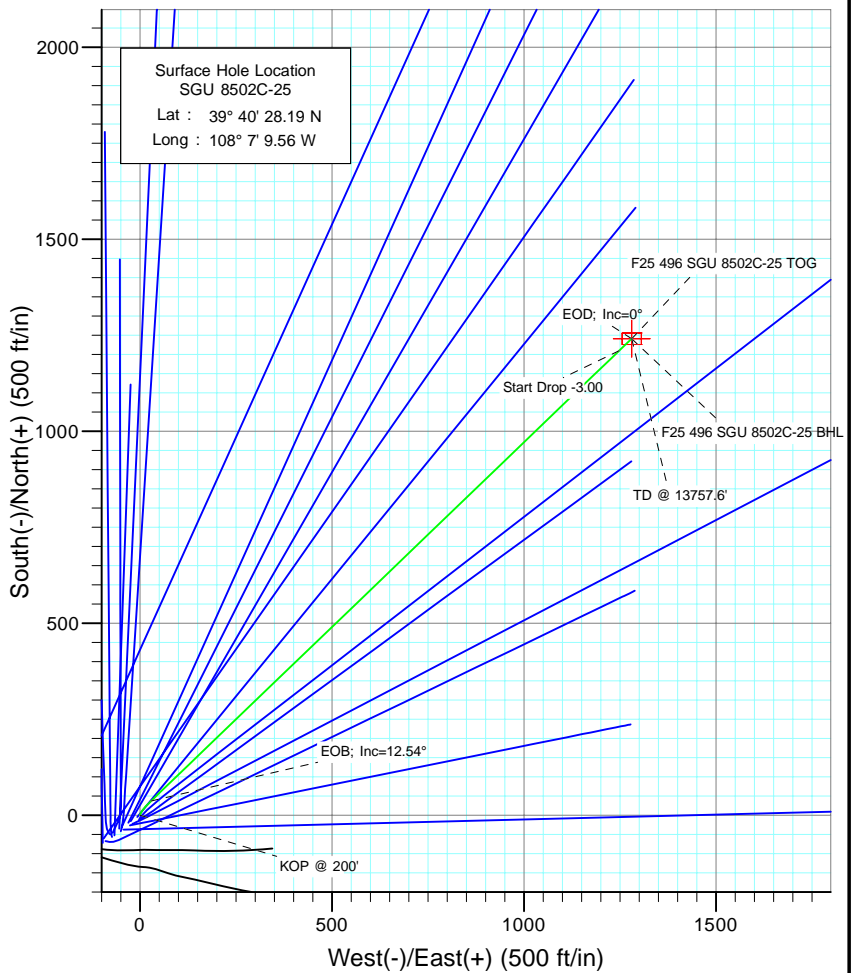




Project: Story Gulch
Site: F25 496
Well: SGU 8502C-25
Wellbore: DD
Design: Plan #1



SECTION DETAILS											
Sec	MD	Inc	Azi	TVD	+N/-S	+E/-W	Dleg	TFace	V Sect	Target	
1	0.0	0.00	0.00	0.0	0.0	0.0	0.00	0.00	0.0		
2	200.0	0.00	0.00	200.0	0.0	0.0	0.00	0.00	0.0		
3	333.3	4.00	20.00	333.2	4.4	1.6	3.00	20.00	4.2		
4	637.1	12.54	46.11	633.6	37.3	29.0	3.00	37.09	46.8		
5	8429.7	12.54	46.11	8240.5	1209.9	1247.9	0.00	0.00	1738.1		
6	8847.6	0.00	0.00	8655.0	1241.4	1280.7	3.00	180.00	1783.7	F25 496 SGU 8502C-25 TOG	
7	12507.6	0.00	0.00	12315.0	1241.4	1280.7	0.00	0.00	1783.7	F25 496 SGU 8502C-25 BHL	
8	13757.6	0.00	0.00	13565.0	1241.4	1280.7	0.00	0.00	1783.7		
9	14007.6	0.00	0.00	13815.0	1241.4	1280.7	0.00	0.00	1783.7		



Bottom Hole Location
SGU 8502C-25
Lat : 39 40 40.46 N
Long. : 108 6 53.18 W



Azimuths to True North
Magnetic North: 10.55°

Magnetic Field
Strength: 52453.6nT
Dip Angle: 65.90°
Date: 5/6/2010
Model: IGRF200510

FORMATION TOP DETAILS			
TVDPath	MDPath	Formation	
1615.0	1642.4	Para Creek	
1915.0	1949.8	Mahog Bench	
1975.0	2011.2	Base B	
5515.0	5637.7	Was G	
8615.0	8807.6	WF	
8655.0	8847.6	TOG	
12315.0	12507.6	Rollins	
12645.0	12837.6	Cozzette	
12835.0	13027.6	Corcoran	
13115.0	13307.6	Sego	
13315.0	13507.6	Lower Sego	

DESIGN DETAILS: Plan #1					
105XXX; BH					
KBE @ 8320.0ft (Original Well Elev)					
Target	Azimuth	Origin	N/S	E/W	From TVD
F25 496 SGU 8502C-25 BHL	45.89	Slot	0.0	0.0	0.0

Cathedral Energy Services

Planning Report

Database:	EDM 5000.1 US Multi Users DB	Local Co-ordinate Reference:	Well SGU 8502C-25
Company:	EnCana Oil & Gas (USA) Inc	TVD Reference:	KBE @ 8320.0ft (Original Well Elev)
Project:	Story Gulch	MD Reference:	KBE @ 8320.0ft (Original Well Elev)
Site:	F25 496	North Reference:	True
Well:	SGU 8502C-25	Survey Calculation Method:	Minimum Curvature
Wellbore:	DD		
Design:	Plan #1		

Project	Story Gulch		
Map System:	US State Plane 1983	System Datum:	Mean Sea Level
Geo Datum:	North American Datum 1983		
Map Zone:	Colorado Central Zone		

Site	F25 496				
Site Position:		Northing:	1,681,091.06 ft	Latitude:	39° 40' 27.10 N
From:	Lat/Long	Easting:	2,262,632.54 ft	Longitude:	108° 7' 11.76 W
Position Uncertainty:	0.0 ft	Slot Radius:	13.200 in	Grid Convergence:	-1.65 °

Well	SGU 8502C-25					
Well Position	+N/-S	0.0 ft	Northing:	1,681,196.25 ft	Latitude:	39° 40' 28.19 N
	+E/-W	0.0 ft	Easting:	2,262,807.30 ft	Longitude:	108° 7' 9.56 W
Position Uncertainty		0.0 ft	Wellhead Elevation:	ft	Ground Level:	8,298.0 ft

Wellbore	DD				
Magnetics	Model Name	Sample Date	Declination (°)	Dip Angle (°)	Field Strength (nT)
	IGRF200510	5/6/2010	10.55	65.90	52,454

Design	Plan #1			
Audit Notes:				
Version:	Phase:	PLAN	Tie On Depth:	0.0
Vertical Section:	Depth From (TVD) (ft)	+N/-S (ft)	+E/-W (ft)	Direction (°)
	0.0	0.0	0.0	45.89

Plan Sections										
Measured Depth (ft)	Inclination (°)	Azimuth (°)	Vertical Depth (ft)	+N/-S (ft)	+E/-W (ft)	Dogleg Rate (°/100ft)	Build Rate (°/100ft)	Turn Rate (°/100ft)	TFO (°)	Target
0.0	0.00	0.00	0.0	0.0	0.0	0.00	0.00	0.00	0.00	
200.0	0.00	0.00	200.0	0.0	0.0	0.00	0.00	0.00	0.00	
333.3	4.00	20.00	333.2	4.4	1.6	3.00	3.00	0.00	20.00	
637.1	12.54	46.11	633.6	37.3	29.0	3.00	2.81	8.60	37.09	
8,429.7	12.54	46.11	8,240.5	1,209.9	1,247.9	0.00	0.00	0.00	0.00	
8,847.6	0.00	0.00	8,655.0	1,241.4	1,280.7	3.00	-3.00	0.00	180.00	F25 496 SGU 8502C-
12,507.6	0.00	0.00	12,315.0	1,241.4	1,280.7	0.00	0.00	0.00	0.00	F25 496 SGU 8502C-
13,757.6	0.00	0.00	13,565.0	1,241.4	1,280.7	0.00	0.00	0.00	0.00	
14,007.6	0.00	0.00	13,815.0	1,241.4	1,280.7	0.00	0.00	0.00	0.00	

Cathedral Energy Services

Planning Report

Database:	EDM 5000.1 US Multi Users DB	Local Co-ordinate Reference:	Well SGU 8502C-25
Company:	EnCana Oil & Gas (USA) Inc	TVD Reference:	KBE @ 8320.0ft (Original Well Elev)
Project:	Story Gulch	MD Reference:	KBE @ 8320.0ft (Original Well Elev)
Site:	F25 496	North Reference:	True
Well:	SGU 8502C-25	Survey Calculation Method:	Minimum Curvature
Wellbore:	DD		
Design:	Plan #1		

Planned Survey

Measured Depth (ft)	Inclination (°)	Azimuth (°)	Vertical Depth (ft)	+N/-S (ft)	+E/-W (ft)	Vertical Section (ft)	Dogleg Rate (°/100ft)	Build Rate (°/100ft)	Comments / Formations
0.0	0.00	0.00	0.0	0.0	0.0	0.0	0.00	0.00	
100.0	0.00	0.00	100.0	0.0	0.0	0.0	0.00	0.00	
200.0	0.00	0.00	200.0	0.0	0.0	0.0	0.00	0.00	KOP @ 200'
300.0	3.00	20.00	300.0	2.5	0.9	2.4	3.00	3.00	
333.3	4.00	20.00	333.2	4.4	1.6	4.2	3.00	3.00	
400.0	5.72	32.18	399.7	9.4	4.2	9.5	3.00	2.59	
500.0	8.54	40.74	498.9	19.2	11.7	21.7	3.00	2.81	
600.0	11.45	45.02	597.3	31.9	23.5	39.1	3.00	2.91	
637.1	12.54	46.11	633.6	37.3	29.0	46.8	3.00	2.94	EOB; Inc=12.54°
700.0	12.54	46.11	695.0	46.7	38.9	60.4	0.00	0.00	
800.0	12.54	46.11	792.7	61.8	54.5	82.1	0.00	0.00	
900.0	12.54	46.11	890.3	76.8	70.2	103.8	0.00	0.00	
1,000.0	12.54	46.11	987.9	91.9	85.8	125.5	0.00	0.00	
1,100.0	12.54	46.11	1,085.5	106.9	101.4	147.2	0.00	0.00	
1,200.0	12.54	46.11	1,183.1	122.0	117.1	168.9	0.00	0.00	
1,300.0	12.54	46.11	1,280.7	137.0	132.7	190.7	0.00	0.00	
1,400.0	12.54	46.11	1,378.3	152.1	148.4	212.4	0.00	0.00	
1,500.0	12.54	46.11	1,476.0	167.1	164.0	234.1	0.00	0.00	
1,600.0	12.54	46.11	1,573.6	182.1	179.6	255.8	0.00	0.00	
1,642.4	12.54	46.11	1,615.0	188.5	186.3	265.0	0.00	0.00	Para Creek
1,700.0	12.54	46.11	1,671.2	197.2	195.3	277.5	0.00	0.00	
1,800.0	12.54	46.11	1,768.8	212.2	210.9	299.2	0.00	0.00	
1,900.0	12.54	46.11	1,866.4	227.3	226.6	320.9	0.00	0.00	
1,949.8	12.54	46.11	1,915.0	234.8	234.4	331.7	0.00	0.00	Mahog Bench
2,000.0	12.54	46.11	1,964.0	242.3	242.2	342.6	0.00	0.00	
2,011.2	12.54	46.11	1,975.0	244.0	244.0	345.0	0.00	0.00	Base B
2,100.0	12.54	46.11	2,061.7	257.4	257.9	364.3	0.00	0.00	
2,200.0	12.54	46.11	2,159.3	272.4	273.5	386.0	0.00	0.00	
2,300.0	12.54	46.11	2,256.9	287.5	289.1	407.7	0.00	0.00	
2,400.0	12.54	46.11	2,354.5	302.5	304.8	429.4	0.00	0.00	
2,500.0	12.54	46.11	2,452.1	317.6	320.4	451.1	0.00	0.00	
2,600.0	12.54	46.11	2,549.7	332.6	336.1	472.8	0.00	0.00	
2,700.0	12.54	46.11	2,647.4	347.7	351.7	494.5	0.00	0.00	
2,800.0	12.54	46.11	2,745.0	362.7	367.3	516.2	0.00	0.00	
2,900.0	12.54	46.11	2,842.6	377.8	383.0	537.9	0.00	0.00	
3,000.0	12.54	46.11	2,940.2	392.8	398.6	559.6	0.00	0.00	
3,100.0	12.54	46.11	3,037.8	407.9	414.3	581.3	0.00	0.00	
3,200.0	12.54	46.11	3,135.4	422.9	429.9	603.0	0.00	0.00	
3,300.0	12.54	46.11	3,233.1	438.0	445.6	624.7	0.00	0.00	
3,400.0	12.54	46.11	3,330.7	453.0	461.2	646.4	0.00	0.00	
3,500.0	12.54	46.11	3,428.3	468.1	476.8	668.2	0.00	0.00	
3,600.0	12.54	46.11	3,525.9	483.1	492.5	689.9	0.00	0.00	
3,700.0	12.54	46.11	3,623.5	498.1	508.1	711.6	0.00	0.00	
3,800.0	12.54	46.11	3,721.1	513.2	523.8	733.3	0.00	0.00	
3,900.0	12.54	46.11	3,818.8	528.2	539.4	755.0	0.00	0.00	
4,000.0	12.54	46.11	3,916.4	543.3	555.0	776.7	0.00	0.00	
4,100.0	12.54	46.11	4,014.0	558.3	570.7	798.4	0.00	0.00	
4,200.0	12.54	46.11	4,111.6	573.4	586.3	820.1	0.00	0.00	
4,300.0	12.54	46.11	4,209.2	588.4	602.0	841.8	0.00	0.00	
4,400.0	12.54	46.11	4,306.8	603.5	617.6	863.5	0.00	0.00	
4,500.0	12.54	46.11	4,404.4	618.5	633.3	885.2	0.00	0.00	
4,600.0	12.54	46.11	4,502.1	633.6	648.9	906.9	0.00	0.00	

Cathedral Energy Services

Planning Report

Database:	EDM 5000.1 US Multi Users DB	Local Co-ordinate Reference:	Well SGU 8502C-25
Company:	EnCana Oil & Gas (USA) Inc	TVD Reference:	KBE @ 8320.0ft (Original Well Elev)
Project:	Story Gulch	MD Reference:	KBE @ 8320.0ft (Original Well Elev)
Site:	F25 496	North Reference:	True
Well:	SGU 8502C-25	Survey Calculation Method:	Minimum Curvature
Wellbore:	DD		
Design:	Plan #1		

Planned Survey

Measured Depth (ft)	Inclination (°)	Azimuth (°)	Vertical Depth (ft)	+N/-S (ft)	+E/-W (ft)	Vertical Section (ft)	Dogleg Rate (°/100ft)	Build Rate (°/100ft)	Comments / Formations
4,700.0	12.54	46.11	4,599.7	648.6	664.5	928.6	0.00	0.00	
4,800.0	12.54	46.11	4,697.3	663.7	680.2	950.3	0.00	0.00	
4,900.0	12.54	46.11	4,794.9	678.7	695.8	972.0	0.00	0.00	
5,000.0	12.54	46.11	4,892.5	693.8	711.5	993.7	0.00	0.00	
5,100.0	12.54	46.11	4,990.1	708.8	727.1	1,015.4	0.00	0.00	
5,200.0	12.54	46.11	5,087.8	723.9	742.7	1,037.1	0.00	0.00	
5,300.0	12.54	46.11	5,185.4	738.9	758.4	1,058.8	0.00	0.00	
5,400.0	12.54	46.11	5,283.0	754.0	774.0	1,080.5	0.00	0.00	
5,500.0	12.54	46.11	5,380.6	769.0	789.7	1,102.2	0.00	0.00	
5,600.0	12.54	46.11	5,478.2	784.1	805.3	1,123.9	0.00	0.00	
5,637.7	12.54	46.11	5,515.0	789.7	811.2	1,132.1	0.00	0.00	Was G
5,700.0	12.54	46.11	5,575.8	799.1	821.0	1,145.7	0.00	0.00	
5,800.0	12.54	46.11	5,673.5	814.2	836.6	1,167.4	0.00	0.00	
5,900.0	12.54	46.11	5,771.1	829.2	852.2	1,189.1	0.00	0.00	
6,000.0	12.54	46.11	5,868.7	844.2	867.9	1,210.8	0.00	0.00	
6,100.0	12.54	46.11	5,966.3	859.3	883.5	1,232.5	0.00	0.00	
6,200.0	12.54	46.11	6,063.9	874.3	899.2	1,254.2	0.00	0.00	
6,300.0	12.54	46.11	6,161.5	889.4	914.8	1,275.9	0.00	0.00	
6,400.0	12.54	46.11	6,259.2	904.4	930.4	1,297.6	0.00	0.00	
6,500.0	12.54	46.11	6,356.8	919.5	946.1	1,319.3	0.00	0.00	
6,600.0	12.54	46.11	6,454.4	934.5	961.7	1,341.0	0.00	0.00	
6,700.0	12.54	46.11	6,552.0	949.6	977.4	1,362.7	0.00	0.00	
6,800.0	12.54	46.11	6,649.6	964.6	993.0	1,384.4	0.00	0.00	
6,900.0	12.54	46.11	6,747.2	979.7	1,008.7	1,406.1	0.00	0.00	
7,000.0	12.54	46.11	6,844.9	994.7	1,024.3	1,427.8	0.00	0.00	
7,100.0	12.54	46.11	6,942.5	1,009.8	1,039.9	1,449.5	0.00	0.00	
7,200.0	12.54	46.11	7,040.1	1,024.8	1,055.6	1,471.2	0.00	0.00	
7,300.0	12.54	46.11	7,137.7	1,039.9	1,071.2	1,492.9	0.00	0.00	
7,400.0	12.54	46.11	7,235.3	1,054.9	1,086.9	1,514.6	0.00	0.00	
7,500.0	12.54	46.11	7,332.9	1,070.0	1,102.5	1,536.3	0.00	0.00	
7,600.0	12.54	46.11	7,430.5	1,085.0	1,118.1	1,558.0	0.00	0.00	
7,700.0	12.54	46.11	7,528.2	1,100.1	1,133.8	1,579.7	0.00	0.00	
7,800.0	12.54	46.11	7,625.8	1,115.1	1,149.4	1,601.4	0.00	0.00	
7,900.0	12.54	46.11	7,723.4	1,130.2	1,165.1	1,623.2	0.00	0.00	
8,000.0	12.54	46.11	7,821.0	1,145.2	1,180.7	1,644.9	0.00	0.00	
8,100.0	12.54	46.11	7,918.6	1,160.2	1,196.3	1,666.6	0.00	0.00	
8,200.0	12.54	46.11	8,016.2	1,175.3	1,212.0	1,688.3	0.00	0.00	
8,300.0	12.54	46.11	8,113.9	1,190.3	1,227.6	1,710.0	0.00	0.00	
8,400.0	12.54	46.11	8,211.5	1,205.4	1,243.3	1,731.7	0.00	0.00	
8,429.7	12.54	46.11	8,240.5	1,209.9	1,247.9	1,738.1	0.00	0.00	Start Drop -3.00
8,500.0	10.43	46.11	8,309.4	1,219.6	1,258.0	1,752.1	3.00	-3.00	
8,600.0	7.43	46.11	8,408.1	1,230.3	1,269.2	1,767.6	3.00	-3.00	
8,700.0	4.43	46.11	8,507.6	1,237.5	1,276.6	1,778.0	3.00	-3.00	
8,800.0	1.43	46.11	8,607.4	1,241.0	1,280.3	1,783.1	3.00	-3.00	
8,807.6	1.20	46.11	8,615.0	1,241.1	1,280.4	1,783.2	3.00	-3.00	WF
8,847.6	0.00	0.00	8,655.0	1,241.4	1,280.7	1,783.7	3.00	-3.00	EOD; Inc=0° - TOG - F25 496 SGU 8502C-25 1
8,900.0	0.00	0.00	8,707.4	1,241.4	1,280.7	1,783.7	0.00	0.00	
9,000.0	0.00	0.00	8,807.4	1,241.4	1,280.7	1,783.7	0.00	0.00	
9,100.0	0.00	0.00	8,907.4	1,241.4	1,280.7	1,783.7	0.00	0.00	
9,200.0	0.00	0.00	9,007.4	1,241.4	1,280.7	1,783.7	0.00	0.00	
9,300.0	0.00	0.00	9,107.4	1,241.4	1,280.7	1,783.7	0.00	0.00	
9,400.0	0.00	0.00	9,207.4	1,241.4	1,280.7	1,783.7	0.00	0.00	

Cathedral Energy Services

Planning Report

Database:	EDM 5000.1 US Multi Users DB	Local Co-ordinate Reference:	Well SGU 8502C-25
Company:	EnCana Oil & Gas (USA) Inc	TVD Reference:	KBE @ 8320.0ft (Original Well Elev)
Project:	Story Gulch	MD Reference:	KBE @ 8320.0ft (Original Well Elev)
Site:	F25 496	North Reference:	True
Well:	SGU 8502C-25	Survey Calculation Method:	Minimum Curvature
Wellbore:	DD		
Design:	Plan #1		

Planned Survey

Measured Depth (ft)	Inclination (°)	Azimuth (°)	Vertical Depth (ft)	+N/-S (ft)	+E/-W (ft)	Vertical Section (ft)	Dogleg Rate (°/100ft)	Build Rate (°/100ft)	Comments / Formations
9,500.0	0.00	0.00	9,307.4	1,241.4	1,280.7	1,783.7	0.00	0.00	
9,600.0	0.00	0.00	9,407.4	1,241.4	1,280.7	1,783.7	0.00	0.00	
9,700.0	0.00	0.00	9,507.4	1,241.4	1,280.7	1,783.7	0.00	0.00	
9,800.0	0.00	0.00	9,607.4	1,241.4	1,280.7	1,783.7	0.00	0.00	
9,900.0	0.00	0.00	9,707.4	1,241.4	1,280.7	1,783.7	0.00	0.00	
10,000.0	0.00	0.00	9,807.4	1,241.4	1,280.7	1,783.7	0.00	0.00	
10,100.0	0.00	0.00	9,907.4	1,241.4	1,280.7	1,783.7	0.00	0.00	
10,200.0	0.00	0.00	10,007.4	1,241.4	1,280.7	1,783.7	0.00	0.00	
10,300.0	0.00	0.00	10,107.4	1,241.4	1,280.7	1,783.7	0.00	0.00	
10,400.0	0.00	0.00	10,207.4	1,241.4	1,280.7	1,783.7	0.00	0.00	
10,500.0	0.00	0.00	10,307.4	1,241.4	1,280.7	1,783.7	0.00	0.00	
10,600.0	0.00	0.00	10,407.4	1,241.4	1,280.7	1,783.7	0.00	0.00	
10,700.0	0.00	0.00	10,507.4	1,241.4	1,280.7	1,783.7	0.00	0.00	
10,800.0	0.00	0.00	10,607.4	1,241.4	1,280.7	1,783.7	0.00	0.00	
10,900.0	0.00	0.00	10,707.4	1,241.4	1,280.7	1,783.7	0.00	0.00	
11,000.0	0.00	0.00	10,807.4	1,241.4	1,280.7	1,783.7	0.00	0.00	
11,100.0	0.00	0.00	10,907.4	1,241.4	1,280.7	1,783.7	0.00	0.00	
11,200.0	0.00	0.00	11,007.4	1,241.4	1,280.7	1,783.7	0.00	0.00	
11,300.0	0.00	0.00	11,107.4	1,241.4	1,280.7	1,783.7	0.00	0.00	
11,400.0	0.00	0.00	11,207.4	1,241.4	1,280.7	1,783.7	0.00	0.00	
11,500.0	0.00	0.00	11,307.4	1,241.4	1,280.7	1,783.7	0.00	0.00	
11,600.0	0.00	0.00	11,407.4	1,241.4	1,280.7	1,783.7	0.00	0.00	
11,700.0	0.00	0.00	11,507.4	1,241.4	1,280.7	1,783.7	0.00	0.00	
11,800.0	0.00	0.00	11,607.4	1,241.4	1,280.7	1,783.7	0.00	0.00	
11,900.0	0.00	0.00	11,707.4	1,241.4	1,280.7	1,783.7	0.00	0.00	
12,000.0	0.00	0.00	11,807.4	1,241.4	1,280.7	1,783.7	0.00	0.00	
12,100.0	0.00	0.00	11,907.4	1,241.4	1,280.7	1,783.7	0.00	0.00	
12,200.0	0.00	0.00	12,007.4	1,241.4	1,280.7	1,783.7	0.00	0.00	
12,300.0	0.00	0.00	12,107.4	1,241.4	1,280.7	1,783.7	0.00	0.00	
12,400.0	0.00	0.00	12,207.4	1,241.4	1,280.7	1,783.7	0.00	0.00	
12,500.0	0.00	0.00	12,307.4	1,241.4	1,280.7	1,783.7	0.00	0.00	
12,507.6	0.00	0.00	12,315.0	1,241.4	1,280.7	1,783.7	0.00	0.00	Rollins - F25 496 SGU 8502C-25 BHL
12,600.0	0.00	0.00	12,407.4	1,241.4	1,280.7	1,783.7	0.00	0.00	
12,700.0	0.00	0.00	12,507.4	1,241.4	1,280.7	1,783.7	0.00	0.00	
12,800.0	0.00	0.00	12,607.4	1,241.4	1,280.7	1,783.7	0.00	0.00	
12,837.6	0.00	0.00	12,645.0	1,241.4	1,280.7	1,783.7	0.00	0.00	Cozzette
12,900.0	0.00	0.00	12,707.4	1,241.4	1,280.7	1,783.7	0.00	0.00	
13,000.0	0.00	0.00	12,807.4	1,241.4	1,280.7	1,783.7	0.00	0.00	
13,027.6	0.00	0.00	12,835.0	1,241.4	1,280.7	1,783.7	0.00	0.00	Corcoran
13,100.0	0.00	0.00	12,907.4	1,241.4	1,280.7	1,783.7	0.00	0.00	
13,200.0	0.00	0.00	13,007.4	1,241.4	1,280.7	1,783.7	0.00	0.00	
13,300.0	0.00	0.00	13,107.4	1,241.4	1,280.7	1,783.7	0.00	0.00	
13,307.6	0.00	0.00	13,115.0	1,241.4	1,280.7	1,783.7	0.00	0.00	Sego
13,400.0	0.00	0.00	13,207.4	1,241.4	1,280.7	1,783.7	0.00	0.00	
13,500.0	0.00	0.00	13,307.4	1,241.4	1,280.7	1,783.7	0.00	0.00	
13,507.6	0.00	0.00	13,315.0	1,241.4	1,280.7	1,783.7	0.00	0.00	Lower Sego
13,600.0	0.00	0.00	13,407.4	1,241.4	1,280.7	1,783.7	0.00	0.00	
13,700.0	0.00	0.00	13,507.4	1,241.4	1,280.7	1,783.7	0.00	0.00	
13,757.6	0.00	0.00	13,565.0	1,241.4	1,280.7	1,783.7	0.00	0.00	TD @ 13757.6'
13,800.0	0.00	0.00	13,607.4	1,241.4	1,280.7	1,783.7	0.00	0.00	
13,900.0	0.00	0.00	13,707.4	1,241.4	1,280.7	1,783.7	0.00	0.00	
14,000.0	0.00	0.00	13,807.4	1,241.4	1,280.7	1,783.7	0.00	0.00	

Cathedral Energy Services

Planning Report

Database:	EDM 5000.1 US Multi Users DB	Local Co-ordinate Reference:	Well SGU 8502C-25
Company:	EnCana Oil & Gas (USA) Inc	TVD Reference:	KBE @ 8320.0ft (Original Well Elev)
Project:	Story Gulch	MD Reference:	KBE @ 8320.0ft (Original Well Elev)
Site:	F25 496	North Reference:	True
Well:	SGU 8502C-25	Survey Calculation Method:	Minimum Curvature
Wellbore:	DD		
Design:	Plan #1		

Planned Survey									
Measured Depth (ft)	Inclination (°)	Azimuth (°)	Vertical Depth (ft)	+N/-S (ft)	+E/-W (ft)	Vertical Section (ft)	Dogleg Rate (°/100ft)	Build Rate (°/100ft)	Comments / Formations
14,007.6	0.00	0.00	13,815.0	1,241.4	1,280.7	1,783.7	0.00	0.00	

Targets									
Target Name	Dip Angle (°)	Dip Dir. (°)	TVD (ft)	+N/-S (ft)	+E/-W (ft)	Northing (ft)	Easting (ft)	Latitude	Longitude
- hit/miss target									
- Shape									
F25 496 SGU 8502C-25	0.00	0.00	12,315.0	1,241.4	1,280.7	1,682,400.24	2,264,123.28	39° 40' 40.46 N	108° 6' 53.18 W
- plan hits target center									
- Rectangle (sides W30.0 H50.0 D0.0)									
F25 496 SGU 8502C-25	0.00	0.00	8,655.0	1,241.4	1,280.7	1,682,400.24	2,264,123.28	39° 40' 40.46 N	108° 6' 53.18 W
- plan hits target center									
- Point									

Formations						
Measured Depth (ft)	Vertical Depth (ft)	Name	Lithology	Dip (°)	Dip Direction (°)	
1,642.4	1,615.0	Para Creek		0.00		
1,949.8	1,915.0	Mahog Bench		0.00		
2,011.2	1,975.0	Base B		0.00		
5,637.7	5,515.0	Was G		0.00		
8,807.6	8,615.0	WF		0.00		
8,847.6	8,655.0	TOG		0.00		
12,507.6	12,315.0	Rollins		0.00		
12,837.6	12,645.0	Cozzette		0.00		
13,027.6	12,835.0	Corcoran		0.00		
13,307.6	13,115.0	Sego		0.00		
13,507.6	13,315.0	Lower Sego		0.00		

Plan Annotations				
Measured Depth (ft)	Vertical Depth (ft)	Local Coordinates		Comment
		+N/-S (ft)	+E/-W (ft)	
200.0	200.0	0.0	0.0	KOP @ 200'
637.1	633.6	4.4	1.6	EOB; Inc=12.54°
8,429.7	8,240.5	37.3	29.0	Start Drop -3.00
8,847.6	8,655.0	1,209.9	1,247.9	EOD; Inc=0°
13,757.6	13,565.0	1,241.4	1,280.7	TD @ 13757.6'
14,007.6	13,815.0	1,241.4	1,280.7	Permit TD @ 14007.6'