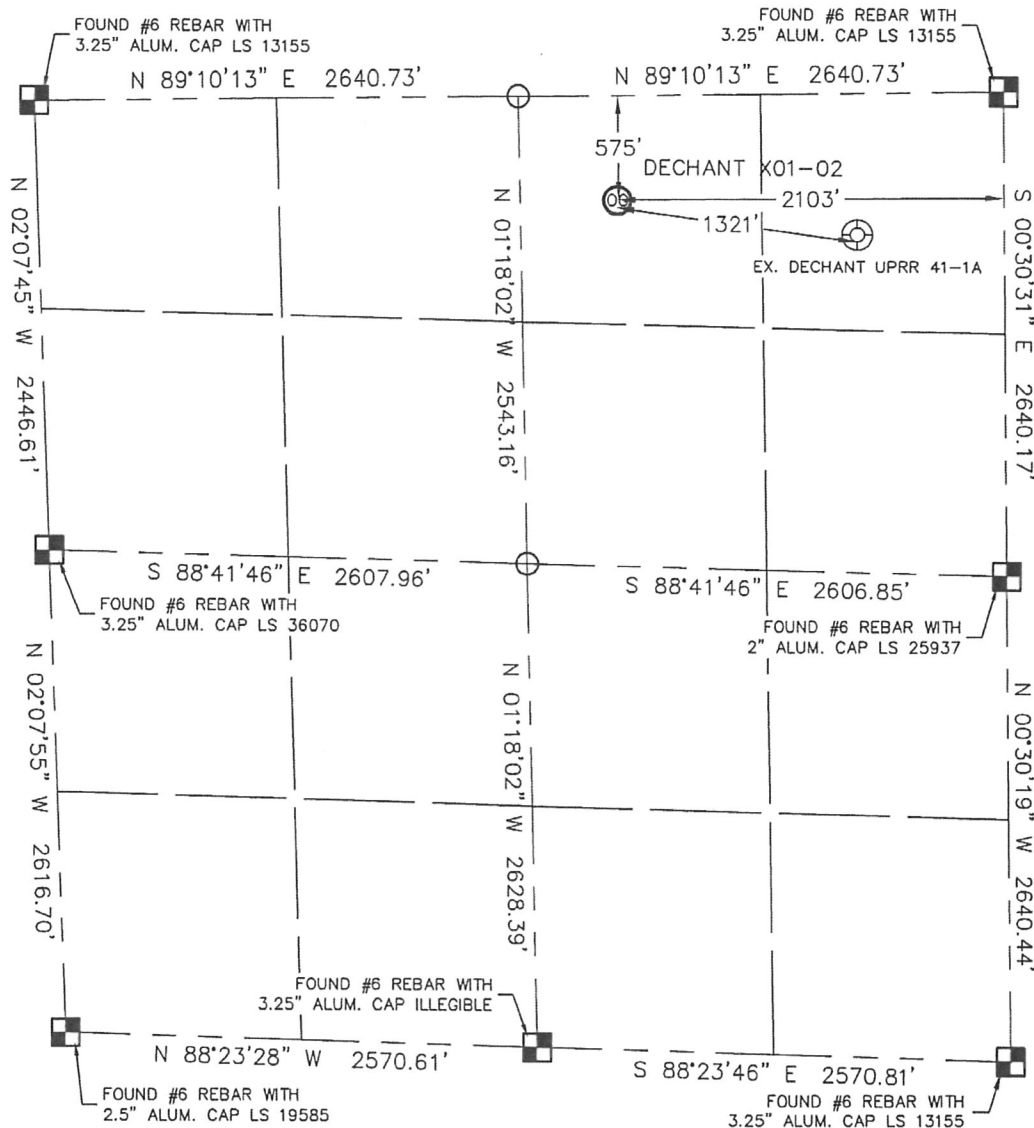


Lat40°, LLC 1635 Foxtrail Drive, Suite 325 Loveland, CO 80538

# WELL LOCATION CERTIFICATE

THIS MAP DOES NOT REPRESENT A BOUNDARY SURVEY

SECTION: 1  
TOWNSHIP: 2N  
RANGE: 65W



In accordance with a request from SEAN CASPER with Noble Energy Inc.

Lat40°, LLC has determined the surface location of the DECHANT X01-02 to be 575' from the NORTH line and 2103' from the EAST line as measured at right angles from the section line of Section 1, Township 2 North, Range 65 West of the Sixth Principal Meridian, County of Weld, State of Colorado.

I hereby state that this Well Location Certificate was prepared by me, or under my direct supervision, that the fieldwork was completed on 4/14/10, for and on behalf of Noble Energy Inc. That this is not a Land Survey Plat or an Improvement Survey Plat, and that it is not to be relied upon for establishment of fence, building, or other future improvement lines.

## NOTE:

- 1) Bearings shown are Grid Bearings of the Colorado State Plane Coordinate System, North Zone, North American Datum 1983/2007. The lineal dimensions as contained herein are based upon the "U.S. Survey Foot."
- 2) Ground elevations are based on an observed GPS elevation (NAVD 1988 DATUM).
- 3) NEAREST EXISTING WELL: DECHANT UPRR 41-1A 1321' EAST
- 4) IMPROVEMENTS: See VISIBLE IMPROVEMENTS exhibit for all visible improvements within 400' of disturbed area.
- 5) SURFACE USE: CROP IRRIGATED

## SURFACE LOCATION

LATITUDE: 40.17275N  
LONGITUDE: 104.61042W  
PDOP: 1.6  
ELEV: 4828  
1/4, 1/4: NW1/4NE1/4  
NEAREST PROPERTY LINE: 575' NORTH

## NOTE

According to Colorado law, you must commence any legal action based upon any defect in this W.L.C. within three years after you discover such defect. In no event, may any action based upon any defect in this survey be commenced more than ten years after the date of the certificate shown hereon. (13-80-105 C.R.S.)

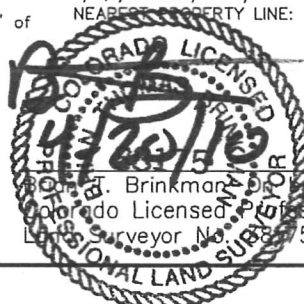
## LEGEND



= ALIQUOT MONUMENT AS DESCRIBED



= CALCULATED POSITION

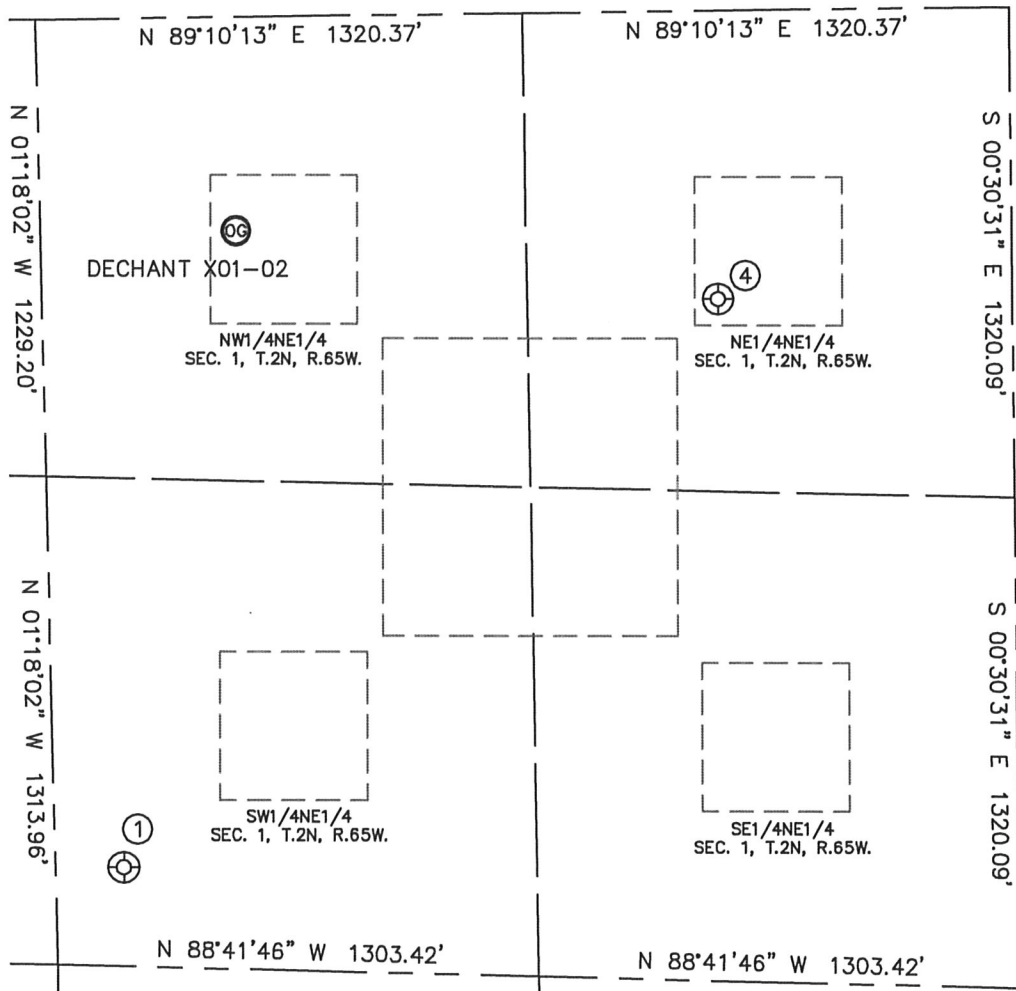


Prepared by: Seal of Sean Casper, Professional Surveyor No. 2010009 on behalf of Lat40°, LLC

PROJECT#: 2010009

## SITE SKETCH

SECTION: 1  
TOWNSHIP: 2N  
RANGE: 65W



①  
DECHANT USX X 1-7  
SW1/4NE1/4  
2283' FNL  
2424' FEL  
LAT-40.16806°N  
LONG-104.61157°W  
PDOP: 1.8  
ELEV: 4836

④  
DECHANT UPRR 41-1A  
NE1/4NE1/4  
775' FNL  
797' FEL  
LAT-40.17222°N  
LONG-104.60574°W  
PDOP: 1.4  
ELEV: 4833

