

Steil Surveying Services, LLC

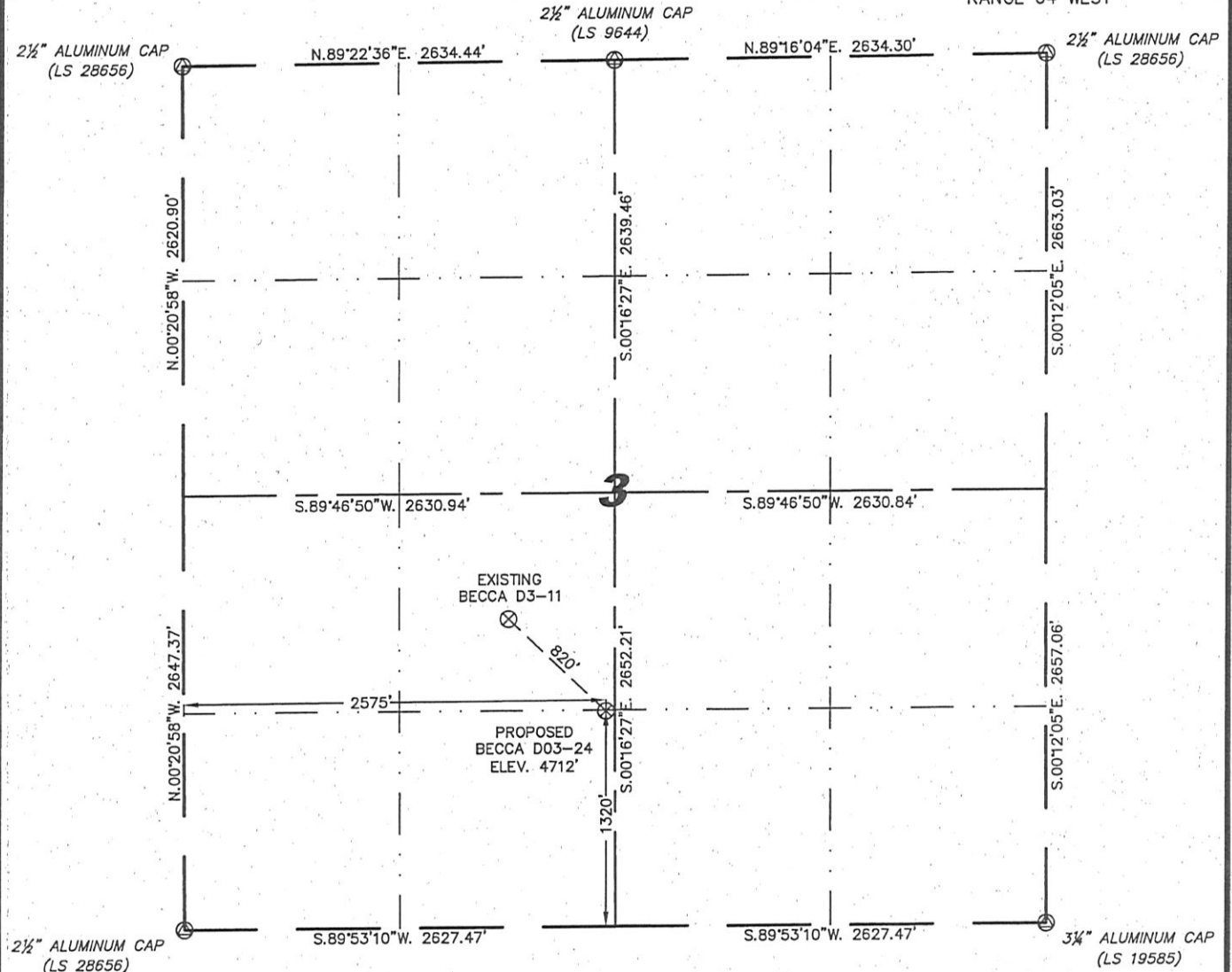
1102 West 19th Street P.O. BOX 2073

Cheyenne, Wyoming 82009

WELL LOCATION CERTIFICATE

THIS MAP DOES NOT REPRESENT A BOUNDARY SURVEY

SECTION 3
TOWNSHIP 3 NORTH
RANGE 64 WEST



0 1000

Scale: 1" = 1000'

IN ACCORDANCE WITH A REQUEST FROM JOE JOHNSON - NOBLE ENERGY INC, STEIL SURVEYING SERVICES, LLC HAS DETERMINED THE LOCATION OF THE BECCA D03-24 WELL TO BE 1320' FSL, 2575' FWL, AS MEASURED AT NINETY (90) DEGREES FROM THE SECTION LINES, SECTION 3, TOWNSHIP 3 NORTH, RANGE 64 WEST, 6TH PRINCIPLE MERIDIAN, WELD COUNTY, COLORADO.

I HEREBY CERTIFY THAT THIS WELL LOCATION CERTIFICATE WAS PREPARED BY ME, OR UNDER MY DIRECT SUPERVISION, THAT THE FIELD WORK WAS COMPLETED ON 03/04/2010, FOR AND ON BEHALF OF NOBLE ENERGY INC, THAT IT IS NOT A LAND SURVEY PLAT OR AN IMPROVEMENT SURVEY PLAT, AND THAT IT IS NOT TO BE RELIED UPON FOR ESTABLISHMENT OF FENCE, BUILDING, OR OTHER FUTURE IMPROVEMENT LINES.

NOTES:

- 1) BASIS OF BEARINGS FOR THIS MAP ARE BASED UPON GPS OBSERVATIONS MADE ON 09/15/2009 BETWEEN MONUMENTS LOCATED AT THE SOUTHEAST SECTION CORNER AND THE NORTHEAST SECTION CORNER OF SAID SECTION AND WITH ALL BEARINGS SHOWN HEREON RELATIVE THERETO.
- 2) ELEVATIONS ARE BASED UPON NGS OPUS SOLUTION NAVD 88 DATUM.
- 3) THE NEAREST EXISTING WELL IS: BECCA D3-11, 820' NORTHWEST.
- 4) SEE VISIBLE IMPROVEMENTS EXHIBIT FOR ALL IMPROVEMENTS WITHIN 400'.
- 5) THE LOCATION FALLS IN PASTURE LAND.

LATITUDE & LONGITUDE (NAD 83 SURFACE HOLE):

LATITUDE: N 40.25085°

LONGITUDE: W 104.53739°

PDOP: 2.0

QUARTER-QUARTER: SE/4SW/4

NEAREST PROPERTY LINE: 1025' +/- NORTHWEST

LEGEND

(A) FOUND SURVEY MONUMENT PER MONUMENT RECORD - EXCEPTIONS NOTED.

(C) CALCULATED DIMENSION

Completed 03/18/2010

David C. Holmes
Professional Land Surveyor Registration No. 32828
State of Colorado

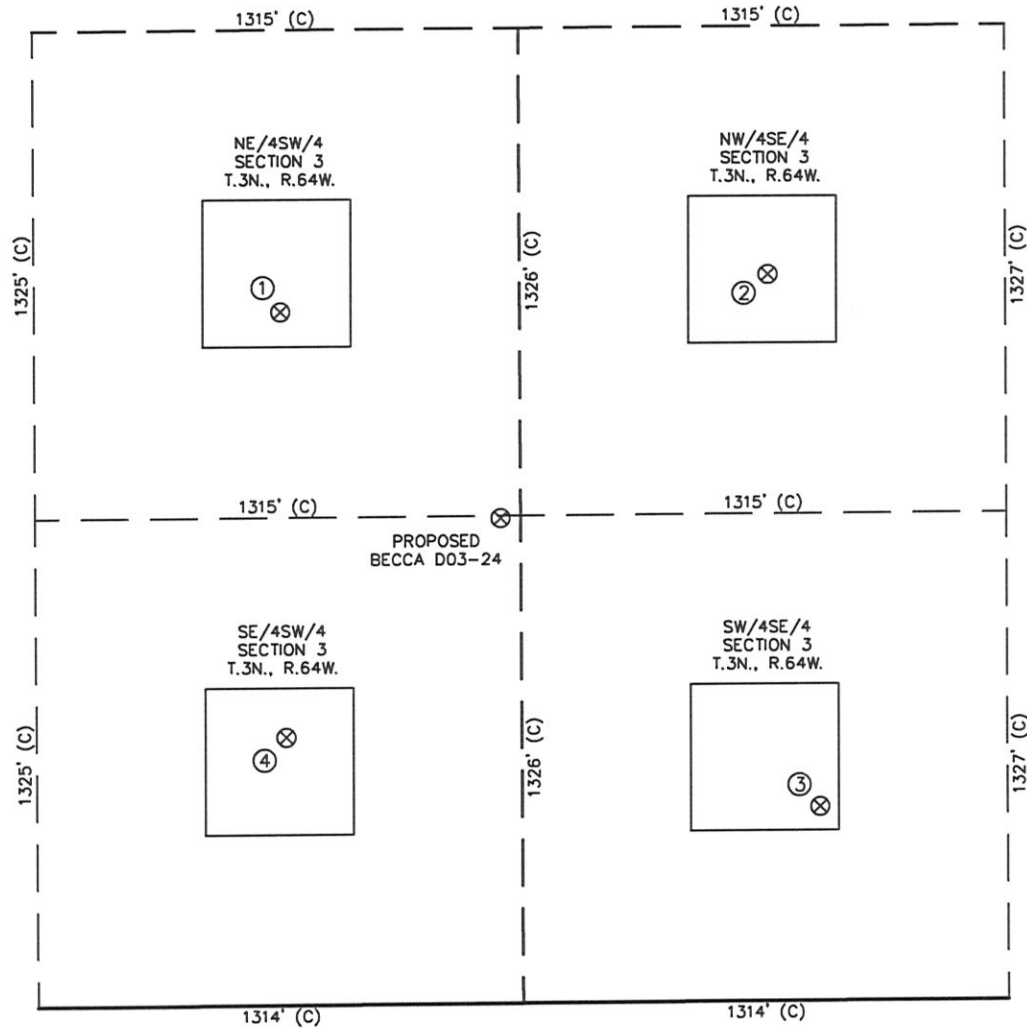
JOB #: 10086



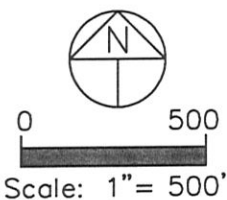
NOTICE: According to Colorado law you MUST commence any legal action based upon any defect in this W.L.C. within three years after you first discover such defect. In no event may any action based upon any defect in this W.L.C. be commenced more than ten years from this sold date of the certification shown hereon.

SITE SKETCH – BECCA D03-24

SECTION 3
TOWNSHIP 3 NORTH
RANGE 64 WEST



①	②	③	④
BECCA D3-11 NE/SW SEC. 3 1883' FSL 1982' FWL EL 4714' N 40.25241 W 104.53950 PDOP 2.3	HSR-GUTTERSEN A10-3 NW/SE SEC. 3 1977' FSL 1957' FEL EL 4708' N 40.25263 W 104.53477 PDOP 2.8	HSR-GUTTERSEN A15-3 SW/SE SEC. 3 528' FSL 1821' FEL EL 4705' N 40.24865 W 104.53432 PDOP 2.8	BECCA D3-14 SE/SW SEC. 3 728' FSL 1990' FWL EL 4711' N 40.24923 W 104.53949 PDOP 2.4



NOTES:

- 1) THIS SKETCH DOES NOT REPRESENT A BOUNDARY SURVEY.
- 2) THE DATUM FOR THE LATITUDES AND LONGITUDES ON THIS SKETCH IS NAD83.